



Port Ludlow *Voice*

Serving the Village of Port Ludlow Since 1998

October 2025

plvoice.org

"Let our advertisers know you saw them in ***The Voice!***"



RE/MAX
Nikki Casal Realtor®
 I am the key to your move.

18 YEARS 190 HOMES SOLD \$67M SOLD 48.5% TSV PORT TOWNSEND

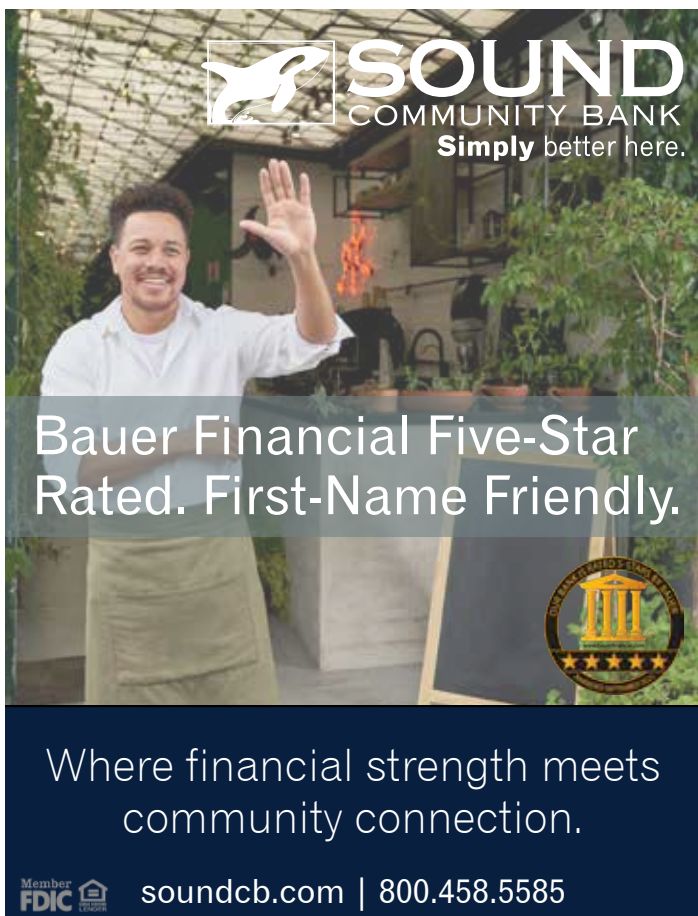
MyAgentNikki.com • 360 301 3384 • MyAgentNikki



Printery®
 YES, WE CAN DO IT!

Creative Design Services, Digital & Offset Printing, Direct Mail Service, Indoor & Outdoor Signage, Custom Apparel Printing

360.385.1256 • www.printery.com • info@printery.com



SOUND COMMUNITY BANK
 Simply better here.

Bauer Financial Five-Star Rated. First-Name Friendly.

Where financial strength meets community connection.

Member FDIC soundcb.com | 800.458.5585



SEA MARINE
 FULL SERVICE BOATYARD

FULL SERVICE BOATYARD
 ABYC Master Technicians • Haul Out Lift
 Canvas Shop • Full Joinery Shop
 Electrical Repower • Plumbing • Painting
 Winter Storage • Provisions

SYSTEMS SHOW ROOM & SERVICE CENTER
 GPS Navigation • Beta Engines • Electronics
 Water Heaters • Heating Systems • Inverters

BROKERAGE SERVICES
 Buying a boat? Selling a boat?
 SEA Marine offers full Brokerage Services.
 Contact Sandy Bakken for a consultation.
<http://seamarineco.com/yacht-brokerage-listings/>

For all your boating needs!
SEA...the difference.

Sandy Bakken, Broker
 Point Hudson, Port Townsend
 (360)385-4000 • seamarineco.com



Medicare Solutions Made Simple

Don't Miss Out! - Medicare Annual Enrollment Period
 October 15 - December 7

Are you considering changes or is your plan ending?

KMi No-Cost Consultation
 Call us today!

Tonya Brinkley
 Licensed Agent
 Kristin Manwaring Insurance

360.385.4400 • kristinmanwaring.com



9526 OAK BAY ROAD, SUITE 100
 PORT LUDLOW

SALISH COAST MED
 Expertise to Redefine Your Skin

Wrinkle Relaxers | Dermal Filler | Microneedling |

salishcoastmed.com // book online // text: 206.659.8016

Mission Statement: The mission of the *Port Ludlow Voice* is to inform its readers of events and activities within the Village and in close proximity to the Village. We will print news articles that directly affect our local residents.

Published monthly by an all-volunteer staff.

Send your articles and comments to
editor@plvoice.org

In This Issue

News & Community	4
Features & Stories.....	12
Arts & Entertainment.....	16
Village News	
Bay Club/South Bay.....	23
Beach Club/North Bay.....	24
Village Council	25
Recreation & Sports.....	27
Classified Ads.....	33
Emergency Numbers.....	32

Visit The *Voice* Online

plvoice.org

Breaking News: Find information on the website before the printed magazine is available. See breaking news on the Home Page and the Community News section for information on North Bay, South Bay, and PLVC for early news for the Port Ludlow Community. All links contained in the articles are live.

Expanded Articles: Read complete versions of articles and media appearing online only.

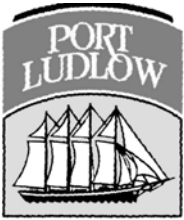
Full Content on the Website: All the content from the magazine is now posted online.

Letters to the Editor: Read comments, criticisms, and suggestions from other readers online.

Advertising Information: Find out how to place classified and display ads, in the magazine. Also find out how to place ads on the web version of the *Voice*.

Archived Voice Issues Online: Copies of every issue of the *Voice*, beginning in August 1998 and continuing to the present, are available on the Website at Archive of Issues.

ON THE FRONT COVER:
Photo by Jay Syverson



Port Ludlow Voice

P.O. Box 65077, Port Ludlow, WA 98365 - *plvoice.org*

Editorial Staff

Copy Editor

Carol Riley, *criley@plvoice.org*

News & Community Editor

Doug Pulling, *newseditor@plvoice.org*

Features & Stories Editor

Evie Maxwell, *features@plvoice.org*

Arts & Entertainment Editor

Pamela Raine, *artsandentertainment@plvoice.org*

Recreation & Sports Editor

Donna Geer, *sports@plvoice.org*

Photo Editors

Jay Syverson & Steve Deligan, *photoeditor@plvoice.org*

Ludlow Maintenance Commission &

Beach Club Editor

editor@plvoice.org

South Bay Community Association &

Bay Club Editor

Carol Riley, *criley@plvoice.org*

Village Council Editor

editor@plvoice.org

Business Staff

Production Manager

Mary Ronen, *editor@plvoice.org*

Classified Advertising Manager

Cathy Thomas, *classified@plvoice.org*

Display Advertising Manager

display@plvoice.org

Distribution Manager

Denny Schuch, *dschuch@plvoice.org*

Subscription Manager

Sarah Schuch, *subscription@plvoice.org*

Web Manager

Tom Sprandel, *tomsprandel@plvoice.org*

News & Community

From the Editor's Desk

Get Ready, Get Set ...

Our December Photo Contest!

Our great December photo contest is back! This is your chance to put your photo on the December cover of the *Voice*. We're looking for a winter- or holiday-themed cover photo. A snow-covered boat in the Marina? Some fabulous holiday lights? Kids and dogs playing in the snow? Icicles or snow-people or a moody shot of winter wildlife? We're open to everything and anything although we admit a preference to outdoor and/or landscape-type images. Still, if you've got an indoor shot that can't be beat, send it along. Just use your imagination and your photo skills and give us something to help showcase the beautiful area we all live in.

While we are certain that your family holiday card photo is very cute, we're not looking for that sort of image. Let's celebrate the natural beauty of this place we call home and get our best image on the cover of the *Voice*. We look forward to seeing your best work!

Criteria, Rules, and Details:

- Please send the **HIGHEST RESOLUTION** image you have. No matter how lovely your image is, if it's not large enough, then it won't print well. Hopefully, it is at least 1 megabyte, but larger is always better. You may submit up to three images. Please attach all your entries to the same email if possible.
- Please use a **VERTICAL** (portrait) orientation instead of horizontal (landscape). Think 'magazine cover' format. Images must be in JPEG (jpg), PNG, TIFF, or PSD formats. Most cameras and smartphones today take JPEG images. The other formats are used by people really into photography, so don't worry if you don't have those other formats.
- Please email the image(s) as an **ATTACHMENT** to photoeditor@plVoice.org. Please do NOT send the image(s) through a link, or a download from the cloud, or any other method except as a direct email attachment.
- Please name the file with your name. Example: Joe_Smith_1, Joe_Smith_2, etc.

You must live in the greater Port Ludlow area to enter, but the image need not be taken locally (although local photos are preferred). If your household receives the *Voice*, then you are eligible to enter. All ages are allowed, but if under

18 you will need parental permission for your name and photo to be used. Please note that your name will be listed as the photographer.

Any submitted images must be yours, taken by you, and that you have full copyright to. You will retain copyright to your image, but by entering the contest you automatically grant permission to the *Voice* to print your image on the December cover and in any future previous-winners-type articles.

The *Voice* reserves the right to reasonably modify or adjust your image as they see fit to make it fit the magazine cover and to print well. This might include adjusting colors, cropping, adjusting exposures, enhancing, masking, etc. Any persons who are recognizable in the image must give their express written permission to appear on the cover. Any recognizable property must have permission from the property owner to appear on the cover. Example: If your image has the local coffee company in the background, then the coffee company owner must give permission for your image to be used.

DUE DATE: Your image must be mailed to photoeditor@plVoice.org by midnight on **November 1**.

The *Voice* staff will select their favorite image for the December issue.

CHECKLIST:

Is your image in **FOCUS**?

Is your image in **VERTICAL** format?

Is your image clear enough to print well? Not too muddy? Has enough contrast?

Is your image file in a high enough resolution? Look at the file size... is it at least 500 kilobytes, or hopefully a megabyte or so?

Have you named your file(s) clearly? Example: Joe_Smith_1, Joe_Smith_2, etc...

Being Safe While Walking

Pedestrians: Walk facing oncoming traffic. Wear light-colored or reflective clothing so that you can be seen easily in the dark.

Drivers: Watch out for walkers. Remember, they can't always see you coming.

Wills And Trusts: What Is Right for You and Your Family

Amanda Wilson, locally based Estate Planning Attorney with Northwest Estate Planning & Probate PS, will present this free seminar and answer questions as time allows.

The presentation will be held at the Beach Club, 121 Marina View Drive, in Port Ludlow, on **Wednesday, October 15**, 1 – 2 p.m.

Walk-ins are welcome but RSVP is appreciated at 360-437-4172 or info@nwepp.com

First Wednesday Luncheon

by Stephanie Buehler, Guest Writer

Mental illness affects one in five people. Most of us know someone close to us who either does suffer or has suffered from some form of mental illness. Join us at the Bay Club on **Wednesday, October 1**, from 11 a.m. – 1 p.m. for the October First Wednesday Luncheon when we will have a representative from the National Alliance on Mental Illness (NAMI) with us to discuss this timely topic. NAMI is a nonprofit, grassroots organization that provides support for self-help and education and advocacy for people with severe and persistent mental illnesses and their family members and friends.

Our luncheon has supported the Jefferson County Food Bank Association for over 50 years with donations made by each attendee every month. Through our monthly programs we also strive to educate and entertain our community as well as provide a venue for neighbors to meet and get to know one another. Luncheons alternate each month between the Beach and Bay Clubs.

Some of our volunteers will provide a salad buffet lunch which will include coffee, tea, and cookies. However, we ask that you bring your own plate, eating utensils, and napkin. Please RSVP by signing up at either the Bay or Beach Club.

There is no charge to attend the First Wednesday Luncheon. However, we do ask attendees to bring donations in the form of cash, checks made payable to the JCFBA, hygiene products or non-perishable food, such as condiments, coffee, peanut butter, jelly, etc. We also ask for a small donation toward the Bay Club's event charge.

And come prepared to participate in our monthly raffle to win some fun prizes. Raffle money also helps support the Food Bank.

Be sure to mark your calendar for **Wednesday, November 5**, when the First Wednesday Luncheon program will present Bayside Housing & Services. Their representative will discuss the ongoing and persistent housing shortage and other projects in which they're involved.

Adding Affordable Housing Is the Topic for *Dine and Discover*

by Allan and Nancy Kiesler, Guest Writers

The mission of Habitat for Humanity is "Bringing people together to build homes, communities, and hope." Join us on **Monday, November 3**, when Jamie Maciejewski, Executive Director of the East Jefferson County affiliate of Habitat for Humanity International, will be our guest speaker. Jamie has been the Executive Director since 2007 and since then, construction of homes in East Jefferson County has gone from one to two per year to over twenty. She will talk about the challenges to our community created by the lack of affordable housing and the transformative power of home ownership. She will also give updates on the two neighborhoods under construction in Port Townsend and the plans for the Mason Street Neighborhood in Port Hadlock.

This event will be held at the Beach Club and is open to North and South Bay members and their guests. Sign-up sheets will be available at the front desk at both the Beach Club and the Bay Club by October 10 and removed on October 31 or sooner if we reach our maximum.

Doors open at 5:30 p.m., but those bringing an appetizer should arrive 10 minutes early. Please bring a dish that will serve 8 - 10 people and put a note on your dish if it contains any of the following allergens: wheat, soy, eggs, milk, tree nuts, peanuts, fish, or shellfish. You will also need to bring your place setting (plates, napkins, eating utensils, glasses) and a plastic bag to put your dirty dishes in to take home. We provide coffee/tea/water but if you would prefer something else, you're welcome to bring your beverage of choice. Admission is \$5 per person payable at the door. This covers the cost of the facility, coffee/tea, and the honorarium we provide the speaker. If you sign up but are unable to attend, please let us know, as no-shows can significantly affect the food selection. Questions or suggestions - call us at 360-437-8091. We hope to see you there!

New Small Grants Program Seeking Applicants

The Jefferson County Board of Commissioners is accepting proposals for the new Thriving Communities Small Grants Program, which offers financial support for community-based organizations that promote a sense of belonging for residents and visitors to feel welcomed and to share in the many activities, opportunities, and experiences available across Jefferson County.

A Request for Proposals (RFP) is being issued so that the Board may make award determinations prior to the end of the year for projects to be undertaken in 2026. The total amount of funding available is \$10,000, and individual awards will range from \$500 to \$2,000. The deadline for submitting proposals is **October 24**, at 4:30 p.m.

Jefferson County-based nonprofit organizations and community groups are encouraged to apply, and some examples of eligible projects are event sponsorship, youth sports organizations, and cultural or recreational activities.

The 2026 RFP packet is available online at co.jefferson.wa.us, scroll down to the Press Release box for full details.

Submit all application materials to the County Administrator's Office via email cao@co.jefferson.wa.us.

Questions? Contact County Administrator Josh D. Peters at jdpeters@co.jefferson.wa.us or call 360-385-9122.

October at the Jefferson County Library District

October ushers in crisp air, fallen leaves, apple picking, and pumpkin patches. Outdoor activities will move indoors, and the Library District will embrace autumn with fun programs and events for all ages. Please visit the events calendar at jclibrary.info for complete details about any program.

Discover how poetry can lift your spirits at the *Huntingford Humanities Lecture: Poetry and Wellness* with Derek Sheffield and Matthew Nienow. Hear from these local poets as they share how poems can support your mental well-being. They will read their own work and pieces by other writers, then answer questions from the audience. We hope to see you at the library on **Thursday, October 2**, from 6:30 – 8:30 p.m.

Join us on Wednesdays in October for the four-part program *The Supreme Court of the United States (SCOTUS)*. The first session is **Wednesday, October 8**, from 6 – 7:30 p.m. We will explain how the court works, talk about important cases from 2024, and look ahead to cases in 2025. In the first session, you can share your own questions or concerns about the court. The group will return to those ideas in the following three sessions. Nils Pedersen and Dr. Joyce Francis will host the class series.

Get ready for a hands-on class that mixes tech and crafts on **Tuesdays, October 14, October 21, and October 28**, from 3 – 4:30 p.m. Join us to explore 3D printing and fiber arts. In the first session, find out how a 3D printer works and see the library 3D printer make small pin looms. In the second, use your loom to weave and crochet pieces for a silly “flat rat” bookmark. In the final class, put it all together and take home your own creation.

Teens can take a brain break during the *Teen Mindfulness Art Meetup* on **Wednesday, October 15**, from 3:30 – 4:30 p.m. This month we'll try *Neurographic Art*—a style where you start with scribbles, round the corners, and fill the shapes with bright colors. It's playful and relaxing, like doodling with a twist. We'll also have snacks for you to enjoy while you create. No pressure to be perfect—just relax and have fun. Please sign up at least one week in advance so we have enough supplies. Visit jclibrary.info to register.

On **Thursday, October 23**, from 5 – 7 p.m., UFO detective and lifelong researcher James Clarkson will take us on an out-of-this-world journey. Hear about a UFO crash in Westport, a craft that could turn invisible, and a witness who once worked in a top-secret Air Force lab. James will also explain the strange shapes and flight patterns of UFOs and answer your questions after the talk.

October programs for children include our monthly *LEGO® at the Library* program on **Thursday, October 9**, from 3:30 – 4:30 p.m. *Storytime at the Library* for toddlers and preschoolers will move back indoors beginning **Monday, October 6**. Please note that there will be no *Storytime* on **Monday, October 13**, as the Library District will be closed for our annual Staff Education Day.

For complete program details and our calendar of events, go to jclibrary.info. Visit the Jefferson County Library District at 620 Cedar Avenue in Port Hadlock. For questions or assistance, call 360-385-6544 or email information@jclibrary.info.

2025 Trunk and Treat

Come to Trunk & Treat and join in the Halloween fun! Let's make it something special for all the kiddos! If you have not participated in the past, here's what you do: dress up in your favorite Halloween costume, decorate the trunk of your car with your Halloween decorations, and load up on treats for the kids. They pick up their treats from there (or from a small table you might want to bring), and they and their parents alike enjoy the creativity of your decorations while receiving treats and tons of enthusiasm over their own costumes.

Date: Friday, October 31

Time: 4 – 6 p.m.

Place: Parking Lot below recycling Center near the Village Store

Those of us who have participated for the past several years agree that we have as much fun, if not more, than the kids. Come join us and get the word out to all your friends and neighbors with kids. We'd love to see them. Happy Halloween! Questions, call Michelle Pelkey at 360-710-3547.

Jefferson Community Foundation Giving Window Opening Soon!

by Carol Riley, Copy Editor

The mission statement of the Jefferson Community Foundation (JCF) is 'to connect diverse people, ideas, and resources to build a future of opportunity for all in Jefferson County.' Never has that mission been more important as government funding cuts are starting to hit Jefferson County. Here are three things you can do to help right now:

- Get to know people who live in different communities across Jefferson County. In times of great challenge, relationships are stronger than plans.
- Direct your charitable gifts to local organizations doing local work for residents of Jefferson County.
- Be a champion. Many people here are new to the area and are not fully aware of how our local nonprofits are the backbone of our culture and our caring. Spread the word and encourage others to engage.

When you give to JCF, they organize the over 400 nonprofits that exist in Jefferson County to help you find organizations working on issues you care about and give you timely information so you can direct your dollars, time, and skills in ways that change lives.

They ensure each gift you make builds on those from other local donors so that, as a whole community, we work in harmony to build the services and supports needed for all who live here to thrive.

Please consider JCF and the community building they do in your year-end giving. Find more information about JCF at jcfgives.org.

PLVC First Annual Canine Costume Contest

The Port Ludlow Village Council is excited to announce its First Annual Canine Costume Contest to be held on **Saturday, October 25**. Just in time for Halloween, the fun will kick off at the Port Ludlow Marina, located at 1 Gull Drive, from 11 a.m. – 2 p.m., with the dog parade starting at 12 p.m. Dog owners will dress their canines in amazing, comfortable costumes and follow a short parade route around the Marina led by a Grand Marshall. Our esteemed judges will select a winner for each of the costume categories: Spookiest, Funniest, Most Creative, Double Trouble (2 dogs), and Best Duo/Trio (owners and dogs in costumes). At least one prize will be awarded in each category. Dogs must have up-to-date rabies vaccinations to participate.

There will also be an online pet photo contest prior to the event, in which any type of pet may be entered. The community will vote online for the People's Choice Award, and the winner of the best pet photo will be announced at the parade. Please visit the Port Ludlow Village Council's website for all the information, including contest rules, submission of the online pet photo contest, and online registration. Registration will also be available on the day of the parade.

This free community-wide event is generating enthusiasm and more information about vendors and sponsors will follow. Even if you are not participating in the contest, come out and enjoy the event, stop by our famous bake-sale table, or visit the animal shelter representatives who will be on site. For inquiries, contact the Village Council at PortLudlowVillageCouncil.org or info@PortLudlowVillageCouncil.org.

plvoice.org

Breaking News – Archive of Past Issues

Early Access to News Articles

Local Arts – Letters to the Editor

From Preschool to Pathways: Leadership in Action, Big Impact, Broad Horizons



Chimacum's school leaders and staff work together to create opportunities for every student and family.

On the first day of kindergarten and preschool at Chimacum Creek Primary, Principal Sarah Walker knelt to greet a group of new learners

as they made their way into the cafeteria for breakfast. Some arrived wide-eyed and hesitant, needing reassurance before getting their food and sitting down. Others burst with energy, eager to recount the adventures of their morning before school. In each case, Sarah met them where they were—offering comfort, listening intently, and setting the tone for a day, and a school year, built on belonging and encouragement.

It was a small moment, but one that captured the heart of Chimacum school leadership—seeing each child, supporting staff to create a welcoming environment, and ensuring school is joyful, inclusive, and connected.

Scenes like this unfold every day in Chimacum schools. Teachers and support staff including paraeducators, office teams, bus drivers, custodians, food service workers, and counselors are the heart of our district. They make classrooms, cafeterias, and hallways places where children are known, cared for, and challenged. Their dedication is what makes Chimacum the heart center of a proud and vibrant community. But behind this collective effort stands leaders who bring it all together. Aligning practices, setting vision, and ensuring the work of many becomes a focused and impactful whole. Strong leadership doesn't replace staff contributions; it amplifies them.

Chimacum is fortunate to have four outstanding school leaders. Ryan Stevens, Principal of Chimacum Junior/Senior High School, has expanded pathways such as dual credit, robotics, and Chimacum Valley Tech. By collaborating with teachers, he has built opportunities for students to

graduate ready for both college and high-demand careers. At Chimacum Elementary, Principal Katie Bensch has infused classrooms with social-emotional learning, restorative practices, and strong Tier 1 instruction, helping students connect rigor with care. Sarah Walker, in addition to leading our youngest learners, also serves as Director of Inclusionary Practices, ensuring every child experiences belonging and support from the start.

Alongside our principals, Kelley Watson serves as Director of Career and Technical Education (CTE) and as Director of the Pi Program. She has championed programs like the FEED Truck, Construction Trades, and Health Career Pathways (hands-on learning that inspires students to dream big and engage with their community). Through the Pi Program, Kelley also ensures students who thrive through experiential and customized learning.



What ties all of this together is collaboration. Leaders and staff work side by side to strengthen curriculum, align teaching strategies across grade levels, build professional learning communities, and use data to improve instruction. They partner on everything: early literacy initiatives, expanding dual credit opportunities, creating restorative approaches to discipline, and developing career pathways that connect directly with local industries. These joint efforts mean students experience consistent expectations, supportive relationships, and opportunities that build on one another as they move through Chimacum schools.

The districtwide leadership influence shows in academic outcomes. By backing teachers, collaborating with staff, and focusing decisions on students, schools are created where innovation is possible and meaningful opportunities emerge for every learner.

In a small rural district like ours, leadership matters—every child counts, every family is part of the community, and every staff member contributes to the core purpose. With the right leaders in place—and the dedication of our people—Chimacum is proving that deep roots can grow broad horizons for every student and family we serve.

Meet Your Firefighters

by Ron Dawson, EJFR Community Outreach Volunteer



Meet Ryan Floberg, a firefighter and EMT at East Jefferson Fire Rescue, who has been with the fire service for three years. He started his career at the fire academy and began as a volunteer with the Brinnon Fire Department. He decided to become a firefighter because of the service it provides to the community. He learns something new every day, and the job keeps him fit. He likes the brotherhood with the other firefighters, the trust he is given, and the respect that is given to the position he holds.

Ryan lives in Gig Harbor, has a wife Cosette and a ten-month old baby boy, Syver. When away from the job, he likes being outdoors, likes the fact that we are in a country setting, enjoys working on mechanical things, tries to stay fit, and enjoys activities with his family.

The thing he likes best about his job is working in our community, the other firefighters, and the people he meets while doing his job. He enjoys meeting people in his same profession in other departments. The hardest part is trying to make the best decision possible and meeting the needs of the people he is trying to serve. It can be challenging to deal with mental health issues, different cultures, and other factors when dealing with the public.

Ryan enjoys humor and likes the opportunity to laugh with staff members and the public he serves.

His goals are to learn more about the elements of his job and to also grow his pressure-washing business that he has on the side.

Ryan is strongly committed to his job, loves the community service it provides, and carries a wonderful attitude toward his work. He is a pleasure to interface with.

Port Ludlow Resident Hopes to Serve

Stu Kerber is a Pacific Northwest native who has resided in Port Ludlow for nine years along with his wife Hilary and two young sons. He holds a BA in Finance from Gonzaga University and a graduate degree from University of Pennsylvania's Stonier Graduate School of Banking.



Stu is passionate about the hospital, and his goal, first and foremost, is that the hospital system remains financially sound. For eight years, he's been a partner in a financial services firm specializing in assisting farmers with generational transitions and financial turnarounds.

He believes his finance career in commercial banking and change management uniquely qualify him for position of hospital commissioner.

Stu is passionate about community involvement and Jefferson Healthcare's vital role in local lives. For more information or if you have questions, please visit KerberForHealth.com.



Upcoming Events for October

October will be a busy and informative month for East Jefferson Fire Rescue (EJFR), beginning with Fire Prevention Week, which is scheduled for **October 5 – 11**. This year the focus will be on how to safely buy, charge, and recycle lithium-ion batteries.

The 4th Annual Fire Rescue Fest will be held at Station 1, 701 Harrison Street in Port Townsend on **Saturday, October 11**, from 10 a.m. – 2 p.m. This event celebrates the history of fire service in Jefferson County, with firefighter demos, skills competitions, and fun and interactive activities for kids and adults. Additional information about these events can be found at EJFR.org.

This year's National ShakeOut drill will take place on **Thursday, October 16**, at 10:16 a.m. The Jefferson County Department of Emergency Management strongly encourages area residents to participate in the Drop, Cover and Hold exercise. For more information and to register your neighborhood or group, go to shakeout.org/washington. More information can also be found at mil.wa.gov/earthquake.

If you have questions about the services EJFR provides, log into EJFR.org or call 360-385-2626.

More information about the Department of Emergency Management can be found at bit.ly/jeffcoecoc or call 360-385-9368.

Port Ludlow Garden Club

Can you think botany, ethnobotany, horticulture, and inter-personal connections through plant cultivation??? If you are intrigued, then be sure to attend this month's presentation for the Port Ludlow Garden Club on orchid cultivation. There will be plants available for purchase as well.

It promises to be an outstanding presentation and well worth your time.

Ryan Russell serves on the board of the Northwest Orchid Society, where he previously held the role as president. We are fortunate indeed to have an individual with these credentials present to us at the Port Ludlow Bay Club, 120 Spinnaker Place on **Wednesday, October 8**, at 11 a.m.

Refreshments are provided and we do ask for members and guests to RSVP by **October 3** to portludlowgardenclub@outlook.com. Non-members are welcome with a \$5 donation.

2025 Statistics for East Jefferson Fire Rescue

Effective 01/01/2023 Port Ludlow Fire & Rescue merged with East Jefferson Fire Rescue. Our monthly statistics will now include information for the entire Fire District.

Communities served include: Port Townsend, Cape George, Kala Point, Marrowstone Is., Port Hadlock, Chimacum, Irondale, Port Ludlow MPR (North and South Bay), Paradise Bay, Beaver Valley, Bridgehaven, Mats Mats, Shine, South Point and other areas located within our boundaries.

August Alarms

Fires.....	9
Rescue/Emergency Medical	326
Good Intent	43
Hazardous Conditions	5
False Alarms	46
Service Call	77
Total Alarms	506

Ambulance Transports

911 Transports.....	196
Hospital Requested Transport.....	0
Non Transports.....	126

CARES Contacts.....	147
----------------------------	------------

Martha's Book Group - *The Burgess Boys*

Martha's Book Group will be discussing Elizabeth Strout's fourth published novel, *The Burgess Boys*, at their **October 14** meeting at 4 p.m. at the Bay Club. Published in 2014 this book was chosen for discussion because the themes explored in it have relevance to the societal conflicts we are seeing today.

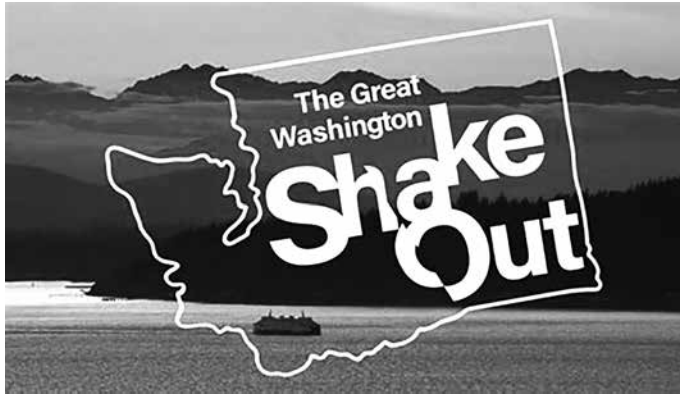
Three siblings, the Burgess boys and their sister Susan, are cast into the national spotlight because of a thoughtless prank by Susan's son. Join us as the group discusses how the Burgess Boys try to defuse the firestorm generated by their nephew's impulsive act while resolving the conflicts within their own relationship.

All are welcome to our book group which meets on the second Tuesday of each month at the Bay Club at 4 p.m.

November's book for discussion will be *I Heard the Owl Call My Name* by Margaret Craven. For additional information about future book discussions contact Sarah Schuch at bookclub@plvoice.org.

Let's Get Ready

by Jay Bakst, Port Ludlow, Great Washington Shakeout Coordinator



Are you prepared? While we live in an area subject to earthquakes, the past couple of years have shown us that other disasters can strike at any time. We in Port Ludlow can be subject to a major fire, flood, or cut off from the outside world. To be prepared, the Port Ludlow Village Council, PLEC (Port Ludlow Emergency Committee), our Communications Center Radio Operators, and your Block Captains, along with the Jefferson County Department of Emergency Management, will be participating in the Great Washington Shakeout on **Thursday, October 16**. Are you willing to join us? We could use your help.

How can you participate? The PLEC will be testing communication with the coordinating emergency agencies. The first step is hearing from you, the members of the Port Ludlow community. Your Block Captains may be getting in touch to ask you to take part in the exercise and provide you with an OK/TEST sign. Please say, "Yes."

On the day of the Shakeout at 10:16 a.m., after you "Drop, Cover, and Hold On," put the sign out somewhere visible from the street. Your Block Captain can explain what else you could do. If you do not have a Block Captain, contact Jay Bakst at ludlowshakeout@gmail.com or Jason Wright at plec.chair@gmail.com.



All of us can use this event to check on some basic emergency preparation. Know where to turn off the propane, water, and power to your house; check that you have sufficient water (one gallon per day per person to last 30 days),

food and emergency supplies; review where your family and neighborhood meeting places are; and be sure that your Go Bag is stocked and readily available in a moment's notice.

PLEC is in need of more help! We have a limited number of Radio Operators and there are over 20 neighborhoods in the village that do not have adequate Block Captain coverage. Volunteer! Contact us for details. ludlowshakeout@gmail.com.

ELVIS Is Coming to Town!!

by Kate Marshall, Artistic Director, Ludlow Village Players

Happy October from the Ludlow Village Players!

We are thrilled to bring you *All the King's Women* this month (**October 17 – 26**) at the Bay Club. This fast-paced series of comedic short skits and monologues is based on the life of Elvis Presley. The show transports audiences back to the time when Elvis-mania was sweeping the nation. From Tupelo, Mississippi, where 11-year-old Elvis wanted a BB gun instead of a guitar, to the controversy of his gyrating hips, from President Richard Nixon's office to Graceland, this touching comedy captures the lasting effects Elvis had on the everyday people of America.

Tickets are available online at LudlowVillagePlayers.org and at the door on the day of the show. We hope to see you there!

Photos as Holiday Gifts

Photographers of all levels of talent can use their skills for gifting. Join the Port Ludlow Photographers meeting on the fourth Monday of each month at the Bay Club Classroom from 10 a.m. – noon. On **Monday, October 27**, we will be discussing ways to use photos for holiday gifts. Photo gifts are not expensive. For example, you could compile a 2026 Calendar with new or family photos (about \$25). Other ideas include putting photos on coffee mugs or coasters, putting together a photo book of past family holiday parties, or framing a special image.

Come to the meeting to get some ideas or to share yours with us. Enjoy time for questions about photography issues and answers. See you in October!

News continued on page 31

Features & Stories

Porch Talk with Shirley Sandoz

by Donna Geer, Staff Writer



A small quilt hangs over her fireplace, reminding me of autumn with its rubicund reds, golds, and all shades of orange. Colorful leaves spin towards the center, funneled by the geometric stitching swirling through the white spaces. Shirley Sandoz says quilting is a form of occupational therapy. It's art construction, which satisfies her inner engineer.

It took a lot of gumption for a woman to pursue engineering in the 1960s, but Shirley was determined. She was attending Harvey Mudd College (HMC) in Claremont, California, a school catering to science, engineering, and mathematics students. Technically, it was coed, though it was predominantly male. Just 12 women were registered at HMC when Shirley was enrolled, and some dropped out within the first year. Shirley was one of only two in engineering.

Hurdles were everywhere on campus, from the guy who asked why she was at a men's college, to the taxi driver who said women were supposed to get married and have babies. Even some professors were uncomfortable having women in their classes.

HMC's female students were housed at nearby Scripps College, a women's fine arts school where they were taught 'gracious living.' The dorms were locked at 10:30 every night, and no women were allowed in the men's dorms at HMC. During her senior year, Shirley was the student body president at HMC. When she successfully proposed to the dean that women be allowed to work on projects with their male classmates *in the men's dorm*, she says she wasn't a

rebel. She was just stumbling through life like everyone else. She graduated with a BS in General Engineering in 1967.

Maybe she got some of that gumption from her family. Both of her grandfathers had little education between them, yet ten of their twelve children completed college in the 1930's. There was always an expectation that she'd attend college. She was a quick study, learning to read alongside her brother when she was three years old. School was easy, but life on the farm was hard.

Shirley grew up in central Oregon. Her mother was a former high school teacher, and her father, a soil conservationist for the Department of Agriculture, worked on the irrigation system of reservoirs and canals in central Oregon. That project inspired her father to purchase a small farm, but it wasn't very profitable. Her mother died when Shirley was twelve years old, and when she graduated from high school, her father sold the farm and moved to Alaska to work on the oil pipeline.

Shirley had been interested in math and science since she was a young girl, so at her high school guidance counselor's urging, she took the airman's qualifying exam and scored so high on mechanical aptitude that an Air Force representative came to her school to talk with her. After getting her degree at Harvey Mudd College, she was awarded the Amelia Earhart Fellowship, which helped pay for grad school at Stanford. She earned a master's degree in mechanical engineering in 1968 and a PhD in 1973.

After graduation, she became a full-time employee for General Electric in California. She managed work on the safety and stability performance of nuclear reactors. She traveled to both Europe and Asia to participate in technology exchanges.

In 1984, Shirley started working at Lockheed Missiles and Space in Texas. She said her most important accomplishment was the Tactical Environmental Support System TESS(3) that she program-managed for Lockheed for three years. It was a development program that provided systems that received and processed environmental information for the Navy. The systems were installed on naval carriers and other large ships. With oceanographic and meteorological information transmitted from satellite data, the Navy could make tactical decisions based on real-time data.

She relocated to Idaho Falls in 1994 as the Director of Alternative Energy and Natural Resources at the Idaho

National Engineering Laboratory, still working for Lockheed Martin, which managed the site for the U.S. Department of Energy. In 1999, she became the Director of Systems Engineering for Ground Operations for the Space Shuttle in Houston until she retired in 2002.

It was the allure of the Pacific Northwest, and her family, that brought Shirley to Washington State. She lived on Marrowstone Island for twelve years before moving to Port Ludlow eight years ago. It's beautiful, she says, and it's easy to "plug in" to the community with all the different groups available. There's so much to do.

When she wants to see more, she travels all over the world. When we first met, she'd just returned from a trip to France and a family reunion in Switzerland. She's going to Brazil, Argentina, and Chile for her next trip. She said she wants to check out the Chilean fjords. Next year, it's on to Greece, Croatia, and Slovenia.

Shirley's always exploring. Maybe it's because her father took trips every winter when work on the pipeline stopped. He traveled the world, and Shirley's been to some of the same places he went. She has a photo book of the Iguazu Falls in Brazil and Argentina when she visited there, almost twenty-five years after her father first arrived. Those falls, a UNESCO World Heritage Site, are wider and taller than New York's Niagara Falls.

Until she sets sail for her next trip, she'll continue taking photos with the Port Ludlow Photographers. She's a member of several quilters' groups, and she's published two books about the quilting process. For fifty years, Shirley's been making quilts. I can't wait to see her work her magic on a new design.

Do you know someone who's got a great story? We can sit on the porch and have a conversation, and enjoy a cup of coffee, or tea if they prefer. You can reach me at sports@plvoice.org to start the conversation. Looking forward to hearing from you.

Spirit of the Land

by Milt Lum, Staff Writer

Marion, nursing supervisor for Windward Island Hospital, started her night shift rounds at the Emergency Department. Five months into her new job, she had discovered that what happened in emergency would be an indication of the kind of night she could expect. Pushing through the double doors to the ER, she went into the staff room as the evening shift nurses were leaving.

"Good evening, Chief," said Gene, the charge night nurse and former Navy corpsman. Marion smiled, returning his

salute. A Navy wife and former Navy nurse who had seen combat during Vietnam, she was accustomed to naval customs and banter. She liked and respected Gene for his cool-headedness and common sense in emergencies.

Their semi-rural hospital, on the windward side of the island of Oahu, staffed their ER with an on-call physician. Private practice physicians with admitting privileges were obligated to staff the ER for a week several times during the year and were allowed to take calls at home. This placed an enormous burden on the ER nursing staff in triaging and managing patients until a physician arrived. With Gene in charge, she knew the physician on call would have an easy night.

While taking report, she was reassured. "Only two on deck," reported Gene. "Our favorite asthma patient who lost her inhaler and is responding well to her second neb treatment. I'll be sure to check with Dr. Hirano before discharging her. You okay with me calling him instead of the doc on call?"

"OK, just make sure you chart that you got my okay," replied Marion. Dr. Hirano was the patient's pediatrician and someone who wanted to be informed anytime a patient of his was treated in the ER.

"The other one is a guy who was careless husking coconuts in his backyard and will need some stitches. I've called Dr. Chang, the on-call general surgeon, and he gave me the green light to take care of it and have the patient make a follow-up appointment."

Marion made her way to the medical-surgical wing to check on the inpatients. The unit had twenty beds which were used for taking care of a few elderly patients requiring skilled nursing care until a long-term facility became available, post-operative patients without complications requiring less than 48 hours monitoring, and uncomplicated medical patients. There was only one RN and three CNA's (Certified Nursing Assistants) to staff this department.

Marion's experience and willingness to work the graveyard shift made her the unanimous choice for the nursing supervisor position. Though a *malihini*, newcomer, the staff welcomed her into their fold. She had been around the world with her husband's assignments from the Orient to the Arctic. She found the island culture especially intriguing with its melding of a variety of local and immigrant cultures and languages into a hybrid local one.

The night shift workers had their own unique way of doing things. Marion was surprised that, while different, it exceeded the standards of care. The first few weeks on the job Marion made surprise visits and found vitals recorded

timely, meds passed on time, and all stocking of supplies completed. She was especially impressed by the CNA's who were attuned to the individual needs of each patient. While limited in what they were allowed to do, they made it easier for the staff RN to do her job. She, in turn, took the time to expand their knowledge and teach additional skill sets.

Their mid-shift meal and story hour intrigued Marion. This gathering, a long-established tradition of the night shift, did not detract from patient care and was found to enhance morale and teamwork. Marion had warily accepted their invitation, although unaccustomed to this degree of socializing during work. She soon became a regular and found it to be one of the more enriching experiences at this hospital.

Learning to decipher their local tongue, known as pidgin, was difficult at first. She could not relate it to any of the basic Asian languages which she learned in the Orient or any of the European languages she learned in school. The cadence, grammar, and dialect were unlike that of any of the regional colloquialisms she heard living in different areas of the United States. It became easier over time as she learned the vocabulary, which originated from Hawaiian, Chinese, Japanese, Filipino, and Portuguese words. This colorful array of words led to idioms which required contextual explanations. In time, Marion learned to relax when speaking pidgin and was delighted to be responded to in kind.

On the floor that night in the med-surg wing was Shirley Midori Tamashiro, an eighty-year-old Nisei, a second generation of Japanese descent. She had been born on the island of Lanai on the morning of December 7, 1941. She was admitted for rehydration and comfort care. Her only surviving relative, a younger sister, had health challenges and could no longer look after her. Marion noted the high level of anxiety among the night staff in caring for this new patient. They were unaccustomed to caring for the terminally ill especially someone so frail. Marion welcomed the opportunity to participate in her care and helped the staff learn about caring for the dying patient.

Though small-statured and frail, Shirley was lucid and feisty once she was rehydrated and had awakened from the stupor of her pain medicine. Marion introduced herself and was surprised to find Shirley conversant and well aware of her situation. Her voice was strong and her gaze steadfast as they chatted. Shirley insisted that she control the administration of her pain medications, "I have little time as it is on this earth...I don't want to spend it sleeping."

Their attraction to each other was instantaneous, and Marion cherished every moment of their eight-day relationship. Shirley shared stories about her life as a teacher in the rural Hawaiian schools where the kids spoke a regional

pidgin dialect so thick that she as a local had difficulty understanding them. She never married, traveled widely, and probed extensively into Marion's life. Marion was amazed at Shirley's resilience as she held on longer than anyone expected. Shirley waited for Marion to come on shift the night she expired.

After Shirley's passing, on several occasions in the weeks that followed, Marion was drawn inexplicably to Shirley's old room. She went into the dimly-lit room and sat down next to the bed. Each time she was embraced by a warmth which left her comforted and at peace.

What Can Your Dreams Do for You?

by Jane Holmes, Guest Writer

What if I told you I spent 18 months recording and interpreting every single dream I had? And what if I told you that the messages in those dreams led me to:

1. Diagnose Disease. My dreams showed me a cancer threat that could have cost me my life.
2. Fine-Tune My Diet. My dreams told me what foods were harming my body and this led to a reduction of symptoms and minor ailments.
3. Deal with Past Traumas. My dreams showed me old wounds that were still impacting my self-image, ability to trust, and my ability to feel emotions. Then they guided me through healing them.
4. Regain a Balance Between My Masculine and Feminine Sides. I had been career-driven most of my life. My dreams helped me bring my feminine side back in balance.
5. Find a New Career. I thought I was done at age 62, but my dreams led me to a new exciting career and volunteer opportunities that have enriched my life.
6. Discover Spiritual Gifts. Do you have the gift of writing, public speaking, counseling, empathy, channeling, healing, or many others? Your dreams will show them to you.

If that sounds too good to be true, I get it. I began my working life as an engineer, so I've always been about logic and facts. But after studying dream interpretation for several years, and analyzing my own dreams and those of clients, I know this for a fact:

Your dreams contain wisdom from your higher self, and they are the best roadmap to your life that you will ever receive.

I would like to invite you to join me on **Monday, November 10** at 11 a.m. at the Beach Club for a presentation. I'll show you examples of many dreams and what they mean as well as talking more about each of the areas above. Attendance is free, and I will give a free interpretation of two dreams that are submitted for the event. You can submit dreams here: dream-surfing.com/submit-a-dream. Be sure to include the event date, **Monday, November 10**.

Hope to see you there.


Member SIPC

Retiring soon?

Let's map out your future together.



Rick Smith, CFP®, AAMS®
Financial Advisor
9526 Oak Bay Rd Suite 300, Po Box 65138
Port Ludlow, WA 98365
360-437-5113

EJB-19325-A-E-DA-3 AECSPAD edwardjones.com

Pacific Northwest Luxury Tailored & Timeless





Architectural Design & General Contractor
Building Locally Since 1992
360-437-8148
marie@newleafwa.com
www.newleafwa.com

New Season Move Management

Senior Moving Specialists



Need Help Moving?
Down-sizing?
De-cluttering?

- Estate Sales and Clear-Outs
- De-clutter, Stage Home for Market, RightSize
- Organize, Pack and Unpack So You Can Relax
- Custom fit plans for your needs & budget




Licensed, bonded & insured

Free in-home consultation!
(360) 774-1255
www.NewSeasonMove.com



NASMM
National Association of Senior Move Managers
Premier Providers of Senior Relocation

Serving Jefferson County and Surrounding Area

Port Ludlow Art League

ART & GIFTS Gallery

HOURS:
Noon - 4:00PM
Tuesday - Saturday

Located next to Sound Community Bank
@ 9500 Oak Bay RD, Suite B, Port Ludlow
www.portludlowart.org

Port Ludlow Pharmacy

YOUR NEIGHBORHOOD PHARMACY

Access prescription services, schedule vaccinations and boosters, and find a wide selection of over-the-counter medications. Contact us for billing assistance, questions, or to transfer your prescriptions.

9481 Oak Bay Road, Suite A, Port Ludlow
360.379.2254 | jeffersonhealthcare.org



Arts & Entertainment

Port Ludlow Art League— Artist of the Month

Featured Artist – Alice Thuring



Llamas, by Alice Thuring.

Submitted photo

Alice Thuring studied both art history and painting at the University of Washington, Whitman College, and Boise State University. Her artwork has been showcased in art galleries in Idaho and Washington.

During October, you can enjoy Alice's artwork at Sound Community Bank and online at portludlowart.org. Her art exhibit will feature the Alaska shoreline, a majestic sunrise, and the curious antics of playful llamas.

The public is invited to attend a reception for Alice on **Wednesday, October 8**, from 4 - 5 p.m. in the lobby of Sound Community Bank and 5 - 6 p.m. at the adjacent Port Ludlow Art League Gallery. The bank and gallery are located at the corner of Oak Bay Road and Osprey Ridge Drive in Port Ludlow. The gallery is open Tuesday through Saturday from noon to 4 p.m. For more information, please email info@portludlowart.org or visit portludlowart.org.

Port Ludlow Art League— Jeweler of the Month

Featured Jeweler – Lora De La Portilla

For more than 20 years, Lora has been designing and creating exceptional jewelry. Her jewelry collection features one-of-a-kind necklaces, bracelets, and earrings. Lora's design style highlights stunning gemstones, pearls, and crystals sourced from around the world. She incorporates both sterling silver and gold in her jewelry pieces, each crafted to stand the test of time.



Citrine Sapphire Earrings, by Lora De La Portilla.

Submitted photo

Lora's inspiration is her belief that every woman deserves a piece of beautiful jewelry in her wardrobe. Her hope is that when someone dons one of her pieces, they will be reminded that they are as unique and beautiful as the jewelry they are wearing.

During October, Lora's jewelry will be on display at the Port Ludlow Art League Gallery, Sound Community Bank, and online at portludlowart.org.

The public is invited to attend a reception for Lora on **Wednesday, October 8**, from 4 - 5 p.m. in the lobby of the bank and 5 - 6 p.m. at the adjacent Port Ludlow Art League Gallery. The bank and gallery are located at the corner of Oak Bay Road and Osprey Ridge Drive in Port Ludlow. The gallery is open Tuesday through Saturday from noon to 4 p.m. For more information, please email info@portludlowart.org or visit portludlowart.org.

Port Ludlow Art League— Upcoming Classes

Watercolor Class – Friday, October 3, 10 a.m. – noon, at the Bridge Deck, 121 Marina View Drive



Join us for a class with Pamela Raine to complete the Walden Pond watercolor painting. All supplies and instructions are provided for a fee. To register, please email info@portludlowart.org.

Acrylic Paint Class – Saturday, October 18, 9:30 a.m. – noon, at the Bridge Deck, 121 Marina View Drive



Join us for a fun class with artist Shirley Bomgaars to complete the Pumpkin Spice acrylic painting. Supplies, instructions, and breakfast-type sips and nibbles are provided for \$50. To register, please email info@portludlowart.org.

Port Ludlow Art League Program Meeting Speaker—Erika Wurm



The Port Ludlow Art League welcomes Erika Wurm as the speaker for their October Program Meeting.

Erika is an eco-conscious, mixed media artist who prefers to use repurposed materials to creatively challenge herself and reduce waste which often creates interesting textures and dimensions.

Her artwork is inspired by her love of nature. As a professional horticulturist, Erika often references dried flora from her garden. She enjoys researching and highlighting endangered species of flora/fauna in her artwork to raise awareness, while adding a touch of her whimsical Wurm-y humor.

In 2015, Erika created Wurm Wares, a place where she could let her inner child create, while celebrating her perfectly silly last name. Erika states, “I create to spark imagination and inspiration along with making folks smile.”

Erika’s presentation will focus on her inspiration, as well as her process from a sketch to a finished piece, including examples of each stage. She will also speak about her love for experimentation with different materials and media. For more information about Erika’s artwork, please visit erikawurm.com.

The program meeting is scheduled for **Wednesday, October 15**, from 1 – 3 p.m., at the Port Ludlow Beach Club. The Beach Club is located at 121 Marina View Drive in Port Ludlow. Guests are welcome to attend for a \$5 fee. For more information, please visit portludlowart.org.

Port Townsend Symphony Orchestra—New Season



The Port Townsend Symphony Orchestra starts a new season with a concert on **Sunday, October 26**, at 2 p.m. at the Chimacum High School Auditorium. Maestro Tigran Arakelyan will be leading this free concert.

This concert features local composer and musician Antoine Martel who goes by the name Sous Chef. Born in Seattle, he studied composition at McGill University. For the last 10 years, he has toured the U.S., Canada, Japan, and Europe, while producing records, composing, and making indie films. His bands have performed on KEXP, been featured in the *New York Times*, and are signed to Anti-Records. This concert premieres his *Pas un Monde Mais un Miroir*.

Also on the program is *Threnody: In memory of Jan Sibelius* by William Grant Still. One of the groundbreaking African American composers of his era, he was commissioned to write a tribute for celebrating the 100th anniversary of Jan Sibelius' birth. The selection of Still matched two composers who integrated the feeling of their roots into their music. While the music is original, Still evokes the spirit and emotional resonance of Sibelius' work through stylistic homage.

Rounding out the program is Piotr Ilyich Tchaikovsky's *Symphony #2*. Threading Ukrainian folk songs into the music, Tchaikovsky started a transition into a Russian style of music. This idea was picked up by other composers, including Rimsky-Korsakov. He also brings program music into the Symphony with depictions of the enormity of the Volga River, a thunderstorm, and the soaring of a crane.

On **Friday, October 24**, at 7 p.m., there will be an open dress rehearsal at the Chimacum High School Auditorium. For more information, please visit ptsymphony.org.

Northwind Art Exhibits and Classes

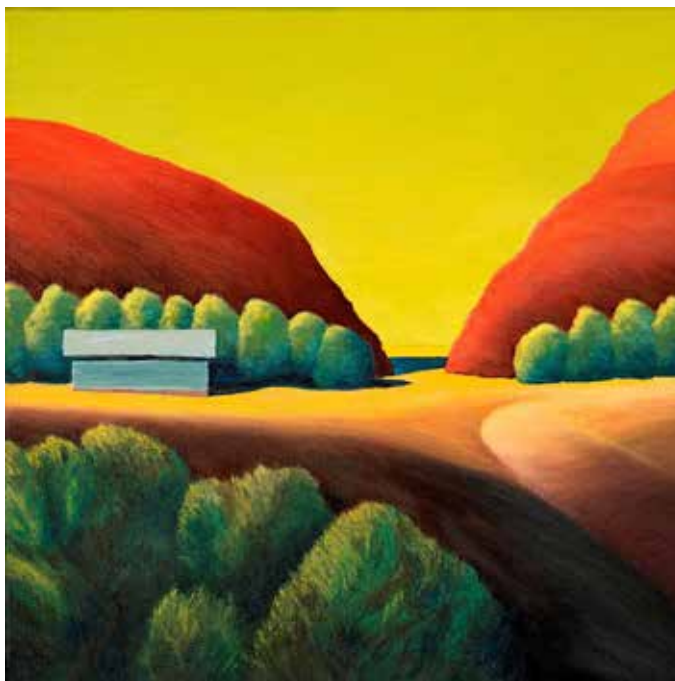
At Jeanette Best Gallery, the Potluck Banquet exhibit gathers ninety-six artworks related to food and drink. The exhibit is on view through **October 13** and serves up ceramic salmon, a large, quilted chocolate cupcake, a whole papier-mâché trout, and portraits of pancakes as a sampling of the artworks.



Mint Chocolate Cupcake, by Terri Wolfe.

Also at the Jeanette Best Gallery, the third and final round of Showcase 2025 exhibits artwork from mixed-media artists, painters, printmakers, and photographers. This exhibit runs through January 6, 2026.

The Jeanette Best Gallery is located at 701 Water St. in Port Townsend. For Information on exhibits, visit NorthwindArt.org.



The Narrows, by teaching artist Scott Allen.

Submitted photos

Northwind Art School Classes

Fort Worden State Park hosts in-person and on-line classes at 200 Battery Way in Port Townsend. Beginners, professional artists, and everyone in between can select a class from the course catalog at NorthwindArt.org under *Take a Class*. October/November classes are as follows:

- Complete Art Foundations – Building Your Skills: **Sundays, October 5 through November 9**, 10 a.m. – noon with Anne Pfeiffer
- Foundations in Drawing – From Line to Form: **Sundays, October 5 through November 9**, 1 – 3 p.m. with Anne Pfeiffer
- Sketchbook Bookbinding: **Thursdays, October 9, 16 and 23**, 1 – 4 p.m. with Kim Kopp
- Layer by Layer – Painting Expressive Landscapes: **Saturdays, October 11 and October 18**, 11 a.m. – 4 p.m. with Scott Allen
- The Magic of Mokuhanga – Japanese Woodblock Printmaking: **Saturday and Sunday, October 11 and 12** with Charles Spitzack
- Online Art Journaling through Change: **Monday, October 13**, with Meg Kaczyk
- PNW Abstract: **Saturday and Sunday, October 18 and 19**, with Meg Kaczyk
- Crafting the Perfect “About” Page – A Writing Workshop for Artists and Makers: **Friday, October 24**, with Jane Pellicciotto
- The Art of Polymer Clay – Wabi-Sabi Brooch and Earrings: **Saturday, October 25**, with Jane Pellicciotto
- Creating Original Papers for Collage: **Wednesday, October 29**, with Anne Schneider

Harold Nelson to Exhibit New Collages at Bayside Art Gallery

Acclaimed local artist Harold Nelson will present a new body of work in an exhibition titled “Painting with Paper” at Bayside Art Gallery from **September 14 – October 31**. An opening reception was held on September 14 at the Gallery.

Known for his extraordinary collages made exclusively from magazine clippings, Nelson assembles vibrant dreamscapes that exist between order and chaos. Each work is a product of an intuitive and improvisational process, where countless small paper clippings are progressively layered with a matte gel adhesive to form cohesive and vibrant compositions. Nelson’s works are wryly witty and invite viewers to get lost in the intricate details, even dare to revel in the excess. They’re an irresistible delight.



Cruise Ship Races No.2, by Harold Nelson.

Harold Nelson retired to Port Townsend in 2005, following a long career as a civil servant in Washington, D.C. His time in D.C. included frequent visits to the National Gallery of Art, which provided him with a self-guided art education that profoundly influenced his artistic development. A key turning point was studying the “painting with paper” approach to collage with Maryland artist George Sakkal. Since moving to Port Townsend, Nelson has been a prominent figure in the local art community.



Pink Flamingoes, by Harold Nelson.

Submitted photos

All artworks in the exhibition are available for sale with proceeds going to Bayside Housing & Services to benefit people experiencing homelessness in Jefferson County. The Gallery is on the second floor of The Old Alcohol Plant Inn located at 310 Hadlock Bay Road, Port Hadlock. Hours of operation are daily from 8 a.m. to 7 p.m.

For more information, visit baysideartgallery.com or contact Christopher Forrest at cforrest@baysidehousing.org or call 206 465-2193.




FIFTH ANNUAL
**SEAFARER'S
FESTIVAL**
NOVEMBER 8, 4-8 PM

HEAR THE TALES FROM CAPTAINS
PAST & PRESENT

Gary Kiester MB Armstrong
Katelinn Shaw Korie Griffith
Dano Quinn Dan Evans

SEASHANTIES BY Seachords

NORTHWEST
CLAMBAKE

every event supports
BAYSIDE
MOVING & SERVICES
providing housing,
services, and stability
for our community.

Spirits
BAR & GRILL

Step aboard for tales, shanties, and RSVP at www.aldalcoholplant.com



**Home Comfort
ALLIANCE**
Formerly Sullivan Heating & Cooling


Heating | Cooling | Ductless
Installation & Repair
Residential / Commercial / New Construction



Serving the Peninsula with award winning
customer service since 1994!

360-200-6207
homecomfortalliance.com

Ask us about tax credits on Energy Star Heat Pumps!

 **Westharbor Homes**


*Providing Remodel Services and Custom Homebuilding in the
Port Ludlow, Port Townsend, Kingston, Poulsbo areas.*

UNLOCK YOUR HOME'S *Full Potential!*


*Ready to transform your current
space? Westharbor Homes is your
trusted partner for home renovations
that deliver exceptional results.*



*Contact us to discuss how to maximize
the value of your home!*



www.westharborhomes.com/remodel/
General Contractor #PORTLAL994L8



SUNSET DINNERS

BACK THIS MONTH!

Choose your Starter, Entrée & Dessert

Available Monday-Thursday from 3pm-5pm
\$36/person



www.portludlowresort.com/the-fireside



FREDERICKSON ELECTRIC

**Your local
HEAT PUMP experts!**

An all-in-one
**heating and
cooling** system
to keep you
comfortable
year-round

Call today to
learn about
**new heat
pump rebates**
available in
2025!

 **(360) 531-6111**
 fredelectric.com
 **Port Townsend, WA**



**Medically Endorsed &
Approved
Cannabis Retailer**

Sea Change Cannabis is locally owned and operated. As Jefferson County's first Retail & Medical Cannabis license, we bring the most experience in our area. What is Sea Change?
A substantial change in perspective, especially one that affects a group or society at large, on a particular issue.
We are leading the Sea Change in Cannabis Culture!
Come in and shop our diverse assortment of products!

Open 7 days a week
Sea Change Cannabis
11323 Rhody Drive
Port Hadlock-Irondale, WA 98339
(360) 385-1320

Required Disclaimer Our products have intoxicating effects and may be habit forming. Marijuana can impair concentration, coordination and judgment. Do not operate a vehicle or machinery under the influence of this drug. There may be health risks associated with the consumption of these products. For use only by adults twenty-one and older, keep out of reach of children.

**A NEW CHAPTER BEGINS AT
PORT TOWNSEND SENIOR LIVING**



OFFERING: INDEPENDENT & ASSISTED LIVING

 **Call for Your Exclusive Tour!**
360-641-7436

- A vibrant, creative resident community
- Daily opportunities for art, music, writing & wellness
- Spacious studios, 1BR & 2BR apartments
- Emergency call system and laundry
- Close access to all Jefferson Health Care

*Formerly known as Avamere of Port Townsend



**PORT TOWNSEND
SENIOR LIVING** | by **COGIR**

John L. Scott®
REAL ESTATE
Port Ludlow Office
In the Village Center
56 Village Way Port Ludlow



Whether you're thinking of moving, or settling into your home for the long term, home maintenance is always key. Here are some fall maintenance items.

Don't forget to:

- Inspect your fireplace
- Check & clear your gutters
- Check your smoke & carbon monoxide detector
- Have your furnace & heat pump serviced
- If you need a referral to a pro - let us know!

Open Mon-Sat 10-2 or by appointment
How can we serve you?
360.382.7709
www.portludlowoffice.johnlscott.com
**Also serving you in Port Townsend &
Port Angeles/Sequim**
www.porttownsendoffice.johnlscott.com



Port Townsend • KPTZ.org



PT LUDLOW GOLF COURSE-751 HIGHLAND DRIVE PT LUDLOW

- **MONDAY-MN** Football-50% OFF APPS W/Entrée Purchase/Drinks Specials
- **TUESDAY- TACO TUESDAY!!**
- **WEDNESDAY- All You Can Eat Pasta!**
- **THURSDAY- LIVE MUSIC!!!!!! 5PM-7PM** (As Available, Starting in October)
- **FRIDAY- EXTENDED HAPPY HOUR SPECIALS (1PM-5PM)**
- **SATURDAY- PRIME RIB SPECIAL!!!**
- **SUNDAY- FOOTBALL! 12th Man SPECIAL- 12% OFF ALL DRINKS**

chimacum corner farmstand

visit us!

YUM!

FOOD FROM HERE

open daily 8 to 7

9122 Rhody Drive, Chimacum, WA
360-732-0107, chimacumcorner.com

Fall for local squash and apples!

BUNDLE HVAC & PLUMBING MAINTENANCE

\$100 OFF

Offer is for a limited time only.

SCHEDULE IN FALL & SAVE BIG!

YOUR LOCAL HVAC & PLUMBING EXPERTS

877-854-6851

FINANCING AVAILABLE

ASK US ABOUT TAX CREDITS AND UTILITY REBATES

INSTALLATION MAINTENANCE REPAIR

EAGLE PIPE
HEATING & AIR

A/C
Plumbing
Heating
Gas Piping
Indoor Air Quality

WWW.EAGLEPIPEMECHANICAL.COM

#EAGLEPM867LK
#EAGLEPH757C8

Servicing Clallam and Jefferson Counties!

IN-HOME CARE AGENCY

Helping you maintain independence and quality of life!

Services:

- Bed Bound Care
- Companion Care
- Meal Preparation
- Supportive Hospice Care
- Medication Reminders
- Transportation/Errands
- Personal Care Assistance (bathing, grooming, dressing, and dressing)
- Light Housekeeping (laundry, changing bed linens, tidying up, ect.)

Ashley Travis
Co-Founder/Client Care Director

Jaimey Quinonez
Co-Founder/Administrator

Tanya Boone
Caregiver Supervisor

OLYMPIC PENINSULA HOME CARE

(360)477-4695

info@olypenhomecare.com

www.olypenhomecare.com

Village News

Bay Club / South Bay

SBCA Happenings

by Carolyn O’Keeffe, President, SBCA Board of Directors

Here we are in October! Leaves are changing colors and we’re getting our gardens ready for the fall and winter months.

At the Bay Club, we’ve had great events for our members. At our September Members Social on September 12, we hosted the “Still Got It Band” and enjoyed rock, blues, and funk music as well as a wonderful potluck. Our September Pancake Breakfast was a huge success and benefited Chimacum Backpacks for Kids. Our October is filled with lots of activities, too—our **October 3** Pancake Breakfast will benefit the Dove House. Our October Members Social will be an Oktoberfest with beer and brats. Later in the month, we will host Ludlow Village Players for *All the King’s Women*. Be sure to check out SBCA Important Dates in the *Voice* or go online to the SBCA website to see more events coming to our Bay Club.

Our Reserve Projects are being scheduled for the upcoming months. Currently, we are replacing the SBCA server and laptop and upgrading workstation OS software. As I’ve shared in prior articles and at the Annual Meeting, the Katsura trees out front of the Bay Club will be taken out once their leaves have fallen. This landscaping project will take place sometime in November. January/February will bring new lockers to both the Women’s and Men’s locker rooms. In March we’ll move to repairing the concrete out front that has been compromised by the roots of the Katsura trees. Soils can then be removed and replaced with fresh soil and compost to support new landscaping for those areas.

Our Finance Committee has kept its focus on ensuring our Reserve Funds and Rainy-Day Fund are growing as planned. We are on track with adding revenue to both funds. On the legal front, we are working with our attorney to update our Bylaws by January 1, 2026, to comply with the Washington Uniform Common Interest Ownership Act (WUCIOA) based on changes in the law (5129 S.SL) and RCW 64.90. Building our Reserves and Rainy-Day Funds and updating our Bylaws to comply with new legal

SBCA Important Dates

Friday - October 3, 8:30 a.m. - Pancake Breakfast, benefiting Dove House

Thursday - October 9, 9:30 a.m. Monthly Board Meeting **

Friday - October 10, 5 p.m. - Member Social - Oktoberfest - beer and brats

Friday - October 17, 6:30 p.m. - LVP - *All the King’s Women*

Saturday - October 18, 2 p.m. - LVP - *All the King’s Women*

Sunday - October 19, 2 p.m. - LVP - *All the King’s Women*

Friday - October 24, 6:30 p.m. - LVP - *All the King’s Women*

Saturday - October 25, 2 p.m. - LVP - *All the King’s Women*

Sunday - October 26, 2 p.m. - LVP - *All the King’s Women*

Sunday - November 2, 2 p.m. - PLPA Concert - “The Moanin’ Frogs”

Friday - November 7, 8:30 a.m. - Pancake Breakfast, benefiting Tri-Area Food Bank

Thursday - November 13, 9:30 a.m. Monthly Board Meeting **

Friday - November 14, 5 p.m. - Member Social - Salmon Feed

All Wednesdays 4 p.m. - Member’s Lounge

** All SBCA members are welcome.

To keep informed of meeting dates and times, please visit sbca.club

Committee meetings minutes are posted at sbca.club, then select the Board Minutes page.

requirements are essential to ensuring our Master HOA is fiscally and legally healthy and prepared for the present and future.

Your Board of Directors are committed to being good stewards and to supporting our SBCA members. Our committees are filled with dedicated volunteers who give their time and energy to their work. As always, volunteers are welcome to join us in our committee work.

Beach Club / North Bay

Update from the Manager

by Brian Belmont, General Manager

Ludlow Maintenance Commission is about to begin a new chapter in our organization's leadership. The process of hiring my replacement as General Manager started in January of this year. The General Manager Search Committee and the Board of Trustees reviewed nearly 30 candidate resumes and conducted numerous interviews. Finding a good fit for the North Bay Community members, our volunteers, and staff was essential.

The Board and the Committee feel we have found that individual. September 16 will be Christopher "Mike" Wilson's first day at the Beach Club. Mike has 10 years of homeowner association management experience and most recently has been working in the Vancouver, Washington area.

Mike, his wife, and daughter are excited about being part of our beautiful community. I encourage our members to stop by the Beach Club and say hello to Mike.

I am looking forward to getting to know Mike and working with him through the end of the year. I expect Mike will bring a fresh perspective and enthusiasm to the position, and I look forward to seeing his growth within the LMC organization.

Organizations such as LMC obviously have paid staff to take care of much of the day-to-day work needed to operate and maintain the association's facilities and maintain compliance with the various laws that have recently passed in Washington that regulate how community associations operate. But it is our volunteers that are at the core of our organization. Our volunteers serve on the Board of Trustees and standing Committees. We also ask for volunteers to help with special projects or to serve on ad-hoc committees. LMC would not be successful without our volunteers!

The Board recently formed a Human Resources Committee who has been charged with reviewing all our personnel-related documents such as our personnel policy, job descriptions, and performance evaluation procedures. If there are LMC members that have experience in this area and are willing to help, send me an email or give me a call.

Another area where we need volunteers is on our Emergency Preparedness Committee. This Committee is charged with providing the residents of North Bay with important information that can assist them in preparing for

LMC and the Beach Club

Phone: 360-437-9201
Email: GM@LMCBeachClub.Org

Sign up for our monthly e-*Navigator* by emailing the above address.

Visit LMCBeachClub.org for more information about your North Bay HOA

a disaster or emergency and in dealing with it effectively in the event one occurs. Again, if you are interested in knowing more about this Committee, please let me know.

As always, if you have questions or comments about this article or the on-going work at the Beach Club, I can be reached at 360-437-9201 or by email at GM@LMCBeachClub.org.

Short Story Guidelines

Do you have a story you would like to tell? The *Voice* is looking for short stories or poems of about 1200 words, either fiction or non-fiction. They should be complete in one issue. No off-color, obscene, violent, political or children's stories. Submissions need to follow the *Voice* style guide which is available on the web at plvoice.org. Stories will be published as needed or timely, at the editors' discretion.

Do It Right Roofing & Construction

Located locally in Port Ludlow • Excellent Local References
Quality and Customer Satisfaction is our #1 Goal

- ♦ All Types of Composition
- ♦ Metal, Cedar Shakes
- ♦ Re-Roofs
- ♦ New Construction
- ♦ All Types of Repairs
- ♦ All Types of Construction
- ♦ Repairs
- ♦ Remodels
- ♦ Decks, Siding
- ♦ Custom Woodwork

General Contractor's License
Lic # DOITRIR943Q
Bonded, Insured

William Bacchus
Phone: **360.774.6348**
email: doitrightroofing@msn.com

Village Council

Port Ludlow Village Council: Liminal Life in Ludlow

by John Goldwood, President, Port Ludlow Village Council

The word ‘liminal’ has gained popularity in recent years. The online version of the Merriam-Webster Dictionary tells us that ‘liminal’ is a word for the in-between. It describes states, times, etc., that exist at a point of change—a metaphorical threshold—as in “the liminal zone between sleep and wakefulness.”

Your Village Council is in a liminal space as we prepare for our annual transition of board members arriving and leaving the Council, and as we prepare for our October elections, and the kick-off of our annual PLVC fundraising efforts. It is a good time to look at the past year and the year ahead. The Roman god Janus would approve, even if we do so in October instead of January.

One year ago, the continued existence of the Port Ludlow Village Council was in doubt. Declining volunteerism and shrinking donations had impacted the Council to the point that we faced financial insolvency and were confronted with the difficult decision whether to shut down or to continue our efforts. In a critical meeting, our board members at the time agreed that the Council provided significant value for our community and voted to sustain the organization. We created a successful campaign that resulted in a very generous donor response of over \$20,000 in the 4th quarter of 2024 which ensured our financial stability through calendar year 2025. Of equal importance, it brought a significant increase in energetic volunteers who gave many hours to help make our campaign a success.

In January 2025, having completed our fundraising campaign and elections for the new PLVC Board of Directors, we kicked off the year with an all-day retreat which resulted in a plan for PLVC activities in the year ahead. Our Goals and Objectives included a re-structuring of PLVC that we named Village Council 2.0, which included a review of our Articles of Incorporation, Bylaws, and Policies and Procedures. We agreed to the formation or continuance of PLVC Committees whose efforts visibly impact our community. We agreed to host at least two Town Hall Meetings, one focused on the Development Agreement between Jefferson County and Port Ludlow Associates, and another focused on the current state of our water and sewer infrastructure. We created a new Finance and Fundraising committee to focus on enhancing

Village Council Meetings

PLVC Annual Meeting

Tuesday, October 21

3 - 5 p.m., Bay Club

plvc.org

financial stability for PLVC, and a new Communications Committee with a broad mandate that included a review of our current website and email communications as well as ‘Social Wellness’ activities and ‘Fun Events’ that benefit the entire community.

I am proud of the work our board members, committee members, and community volunteers have contributed to make our goals a reality. Thanks to their investment of considerable time and energy, your Village Council has achieved the following:

- Researched and funded new insurance for the Trails Committee to protect our volunteers.
- Presented Town Hall sessions to discuss the end of the Port Ludlow MPR Agreement between Port Ludlow Associates and Jefferson County.
- Implemented a new website and outreach program to keep the community better informed.
- Organized several community-wide free events, including the Yard Sale, July 5th Raffle, and the upcoming PAW Parade on October 25.
- Our Emergency Committee continues to work on a community wide disaster plan to improve community safety during a major disaster.
- Held multiple meetings with OWSI regarding the Ice Piggings project to reduce impact to neighborhoods.

As we look ahead to 2026, I am cautiously optimistic about our future. With new candidates who have come forward for next year blended with those board members who will continue, we will again have a Council with a lot of energy and collective experience to continue and improve upon the initiatives we began in 2025. I use the word ‘cautiously’ because of two concerns: the critical financial support

from our community and the equally important need for volunteers to share the responsibilities and opportunities of serving on the Village Council and our committees.

One of my personal goals for 2025 was to find a stable source of funding for the Village Council that did not rely 100% on donations from our community. I failed to achieve that goal. Although we are far more stable today than we might have expected a year ago, we remain absolutely dependent upon generous donations during our fundraising campaign. Although I have mentioned many times our gratitude for all who contributed to PLVC last year, I must note that over 50% of our total donations last year came from just 28 donors. Over 34% of our total donations were provided by 11 very generous donors; our total donors comprised barely 10% of our community. I emphasize here that we are grateful for donations in ANY amount, but please, if you are part of the 90% who offered no financial support last year, please consider helping your community in the year ahead.

My other note of caution concerns this community's challenge with declining volunteerism. One of our board decisions last year was to increase the number of council members who could serve on the Village Council, from nine to fifteen. Our 2026 Village Council currently will be comprised of ten members, including returning members and new candidates. If you have any interest in volunteering for the Council or one of our committees, please check our website portludlowvillagecouncil.org and let us know of your interest. Our bylaws provide a method to appoint additional interested candidates either at our Annual Meeting on **October 21** or later if there is interest.

Meanwhile, we hope you will join us on **Tuesday, October 21**, 3 – 5 p.m. at the Bay Club, with a wine and appetizer reception to follow the annual meeting.

We seek a volunteer who would enjoy arranging our monthly articles on our upcoming, redesigned website. No programming knowledge needed.

Contact
editor@plvoice.org



Michael Haberpointner, PT, DPT
Timothy Mansour, PT, DPT
Faye King, PT, DPT
Bailey O'Hotto, DPT

ACTIVE LIFE PHYSICAL THERAPY



Balance Training • Spinal Rehab • Rehab After Surgery
• Vertigo Treatment • Personal Training
Medicare and most insurances accepted

www.activelifetherapy.com

9483 Oak Bay Rd. • Port Ludlow, WA 98365 • (360) 437-2444

Hear for Life AUDIOLOGY



Camron Meikle, Au.D.
Board Certified Audiologist

"When experience makes the difference."

Comprehensive Hearing Evaluations
Digital Hearing and Assistive Listening Devices
Hearing Device Repairs & Batteries
Insurance Billing • Physician Referrals

Call For A Hearing Consultation:
360 437-7767

115 Village Way, Port Ludlow

Port Ludlow Community Church



9534 Oak Bay Rd
360-437-0145
plcc@olympus.net
Rev. Dr. Kevin Hall
Join us Sundays at 10:30!

*A church by a clearcut
above a gas station next to recycling
in a village in the woods by the bay*



Black Bear Diner

Good Old-Fashioned Family Food!

1471 E. Washington St., Sequim, WA

Comfort Food Classics

Breakfast, Lunch Or Dinner

Served Any Time Of The Day!

ORDER ONLINE! <https://order.blackbeardiner.com/>

Recreation & Sports

Correction

Please see correction to photo caption that appeared in the September issue as follows: Photo Caption: Womens' Invitational Tournament Flight Winners. (L to R) Linda Aho, Golf Pro Jim Mancill, **Sharon Russell**

Pitching—Wet Grass

by Jim Mancill, PGA Head Professional, Port Ludlow GC



Jim Mancill pitching through wet grass.

Submitted photo

Summer has come and gone and we are now heading into our off-season playing conditions, which may present some additional things to consider when playing from the rough. In this article, we are going to touch on shots from around the green.

During the summer, when the grass tends to be a little dryer, there is less resistance when the club goes through it, making it much easier to control the distance. As it cools down, the grass will start to become thicker and the lies may become a little more challenging. There is no hard and fast rule when it comes to selecting the best club to use, but my recommendation is to pick a lofted club that will “pop” the ball into the air, and then watch it roll out on the green.

In the attached pictures, please note that I am making a downward strike to the ball which creates a low follow through, not a scooping or lifting “upwards” swing. As with all shots from around the green, my weight is slightly forward to promote the downward strike and we are tilting slightly toward the target. My goal is to fly the ball to the

green, not bounce it on, then watch it roll out. When it gets wet, it may be harder to gauge the bounce when trying to land it short of the green, so more loft may be helpful. This shot is being played with a 54-degree wedge.

As we did with the putting game, make your practice fun and competitive. Pick three different spots from around the green and play three shots from each location, scoring as follows.

- Holing the shot – 3 points
- Ball finishes inside 4 feet – 2 points
- Ball finishes from 4 to 12 feet – 1 point
- Ball finishes outside 12 feet – 0 points
- Ball misses the green – minus 2

Same as we did with the putting game, score it against yourself or a friend. This will serve as a good start point and the benchmark as you continue to gain confidence through practice. Remember, use the loft and have fun! See you on the tee!

Port Ludlow Niners' News

by Kathleen Traci, Niners' Publicity Chairperson

The September Couples “Tee to Green Scramble” event was well attended and putts were not counted for this event. Throughout the season, J.R.'s Sandtrap provided excellent post-game luncheons for all who stayed after the play. On **Thursday, October 16**, the last Niners' Couples Event, “The Zombie Apocalypse,” will proceed with the End of the Season Niners' Banquet at the Bay Club.

Niner members are looking forward to the Niners' Banquet on Thursday, October 16. At the banquet, Niners' Captain Barb Burke will announce the winners of the Captain's Cups for men and women, the three-day tournament that took place during the season. The 2025 Eclectic Award will be presented to the man and woman who lowered their scores the most on individual holes during the season. Also feted will be the Niners who shot at least one birdie during the 2025 season. Barb will also announce the names of the most improved male and female league members. The Port Ludlow Golf Course's software program, Golf Genius, tracks statistics for these awards.

Burke will be presented with a gift from the members as a “thank you” for her excellent leadership in 2025. In addition, the Niners' slate of officers for 2026 will be announced.

The new Niners' Captain will announce the many events planned for the 2026 Niners' season, including a repeat of the highly successful Women's/Men's putting contest and happy hour. The annual Lady Niner's afternoon social will take place in February, and the 2026 Niners' season will lead off with a cocktail party at the end of March 2026.

Off-season Casual Play opportunities will be emailed to interested league members via Golf Genius. If members wish to receive these golf invitations, they need to contact Linda Haskin. Non-members who wish to play with the PL Women in the off-season need to contact the PLGC pro-shop. PL Golf Course membership is no longer required for membership in the Niners' League.

PLWGA News

by Kathleen Traci, PLWGA Publicity Chairperson



PLWGA Championship winners: left, Turney Oswald (Low Net of the Field); right, Lucinda Thompson (Club CHAMPION).

Photo by Diane Germaine

The PLWGA 2024 Club Champion is Lucinda Thompson, again! She had a three-day low gross score of 258. The tournament's Low Net Winner was Turney Oswald. She played three solid rounds to win the overall Low Net award by 12 strokes—a 203.

The Club Championship's Flight 1's Low Gross winner was Bonnie Vahcic, with a score of 265, and Debi Bozanich was Flight 1's Low Net winner with a score of 222. Sue Fechner was Flight 2's Low Gross winner (301) and Cyndy Kelly was the Low Net winner (222). Low Gross winner of Flight 3 was Linda Aho (323), and the Low Net winner was Diane Kobz (215). Everyone enjoyed the Post Tournament Barbeque hosted by Mandy Whipple at her beach front home. Peggy Selby and her assistant Meryl Friedman were awesome BBQ chefs.

The All-Star Cup Tournament was held on September 8 and 9. This tournament is meant to imitate the LPGA's Solheim Cup with three sets of 9-hole team match-play competition. Chairpersons Debi Bozanich and Bonnie Vahcic held a fun

“Pairings Party” prior to the All-Star Tournament on the golf course café's patio. Captains designed pairings strategically to win the most matches for their team. For this tournament, the membership was divided into two teams, the Northern Lights and the Shooting Stars. The winning team was the Northern Lights. Following the tournament's Nine Hole individual match play, a luncheon party was held at Sue Fechner's lovely water-view home.

The Ryder Cup took place on September 15, 17, and 19. This was a team competition made up of mixed teams from both the men's and women's leagues. Play was based on the real Ryder's Cup format.

The Battle of Port Ludlow will take place on **Tuesday and Wednesday, October 7 and 8**. This tournament pits the women of the PLWGA against the men of the MGA for lowest net scores.

The PLWGA Awards Banquet is set for **Wednesday, October 22**. Captain Sharon Russell will extend appreciation to fellow officers and event chairpersons for their hard work. Banquet Chairs Linda Bloemeke and Carole Fett are planning a specially themed luncheon prior to the award presentations. Award Chairperson Linda DeForest will present the season's awards and prizes in the following categories: Birdies, Breaking 100/90/80, Eclectic (Summer and Spring), Most Improved, and Tournament Winners. A captain's gift will be presented to Captain Sharon Russell for her excellent leadership. The PLWGA nominating committee will announce the new slate of officers for 2026.

Off-season Casual Play opportunities will be emailed to interested league members via Golf Genius. If members wish to receive these golf invitations, they need to contact Linda Haskin. Non-members who wish to play with the Port Ludlow Women Leagues in the off-season, need to contact the PLGC pro-shop. PL Golf Course membership is not a requirement for membership in the PLWGA and the WGA.

SALISH SEA FELLOWSHIP

We are a spiritual community of free faith
growing out of the principles
of Unitarianism and Universalism.

Join us most Sundays in Port Hadlock.

All are welcome!

Find out about our offerings, including our
FREE Adult Learning Programs (ALPs) at

salishseafellowship.org.

Tenacious Tidepool Tenants

by Gail Wellenstein, Kitsap Beach Naturalist



Gumboot chiton.

It's low tide, the rocky pools are calm, and there are small, armored creatures clinging tightly to the rock, chitons and limpets – two of the most ancient and enduring residents of the Salish Sea. They are animals built for endurance, surviving storms, pounding waves, pesky predators and can handle exposure to air by clinging tightly to the rocks, trapping moisture. Beneath the surface, chitons roam with their plated shells, while limpets guard

their home with stubborn determination.

Chitons resemble miniature tanks pressed flat against the rocks. Their shells have eight overlapping plates, allowing them to bend and grip the rocks, reach for food or curl up in a ball like an armadillo, if they become dislodged. Encircling the outside edge of the shell plates, and holding it all together, is a skirt known as a girdle.

Chitons are nocturnal creatures, pressed tightly against the rock during the daytime, playing dead to avoid predators. As night falls, they use their broad, sticky foot to crawl slowly across the surface of their rock, scraping up algae and small barnacles with an extraordinary structure called a radula. It's lined with teeth hardened by magnetite, an iron-based mineral that is stronger than stainless steel and can be picked up by a magnet. No surprise that chitons leave grazing trails behind them.

The largest chitons in the world can be found in kelp beds and the rocky shorelines of Fort Worden and Salt Creek County Park. The gumboot chiton grows up to one foot in length and can live twenty years. Its name comes from the thick orange girdle that completely covers the scales and resembles the texture of a rubber boot. Its grip is not as strong as the smaller chitons, so it can be dislodged in storms, revealing its soft underbelly to the curious beach walker or hungry otter.

Limpets, with their simple cone-shaped shells also live in this tidepool. They are smaller and less embellished than chitons, but they make up for this simple appearance by sheer determination. A limpet's foot is a powerful suction pad, able to hold its body so firmly to the rock that prying it off is nearly impossible. Hence the phrase, "clinging like a limpet."



Mossy chiton and shield limpets.

Photos by Gail Wellenstein

When the tide comes in, limpets loosen their grip and begin to travel, scraping up algae just as chitons do. But they have a different strategy. Many limpets keep to a small territory, returning faithfully to the same spot on the rock known as a "home scar." Over several years, the edge of their shell wears into the rock, forming a perfect seal. At low tide the limpet clamps itself into that scar, safe from drying out or being dislodged.

The radula of a limpet contains over 100 rows of iron mineralized teeth, using and wearing out the front 10 rows. These rows grow in a conveyor belt style, beginning at the back of the radula, and moving toward the front. It takes two days to grow a row of teeth.

In some ways, chitons and limpets are gardeners. By grazing on algae, they keep surfaces clear for other species to settle. In turn, they provide food for crabs, birds, and fish. They are small, quiet workers in a bustling ecosystem, their persistence shaping the balance of life on the rocks.



Liberty Shores

SENIOR LIVING

RETIREMENT • ASSISTED LIVING • MEMORY CARE

LOCALLY OWNED AND MANAGED

360.779.5533

19360 Viking Ave NW | Poulsbo WA, 98370

www.LibertyShores.com

Port Ludlow Hiking Club

by John Nuerenberg, Port Ludlow Hiking Club

Hikers meet at the Bridge Deck in Port Ludlow on the day of the hike at 8:15 a.m. to get directions to the trailheads, arrange carpools, and depart at 8:30 a.m.

Those on the hiking email roster receive an update the week of a scheduled outing. If you would like to be added to the email roster, send a note to plhikingclub@yahoo.com, or go to the club's website at portludlowhikingclub.com and click "Contact" to send a message. Anyone may join in the hikes; you don't have to be a member of the email roster or club.

Notice: the Hiking Club needs a scribe to manage the club's business. If you are interested in volunteering for this position, please call John Nuerenberg at 623-229-4657 or email plhikingclub@yahoo.com.

Friday, October 10 – Dosewallips River Road, Dosewallips River Valley

Walk from the Dosewallips Road washout area on the abandoned road that starts in the forest and leads to the abandoned park ranger station and campground. This is a moderate hike of up to approximately 11 miles and 1300 elevation gain. It is rated as a D3 hike. Total distance will be determined by the energy of the hikers. Enjoy the whitewater beauty of the Dosewallips River and the fall scenery of the gorge.

Be prepared for October weather. Make sure you have water, a snack or lunch, and your walking sticks. The trail is dog friendly in the National Forest, but they must be on a leash. Dogs are not allowed in the National Park. A privy restroom is available at the park campground if we make it that far.

Additional information is available at wta.org/go-hiking/hikes/dosewallips-river. Hike Leader Gary Hicks can be reached by email at ghicks01@gmail.com or by phone at 510-566-2401.

Wednesdays: Timberton Loop. Walk the 4.2-mile Timberton Loop and enjoy views of the Olympic Mountains. This is a no-leader hike. Meet other walkers at the parking lot trailhead on Timberton Drive at 9 a.m.

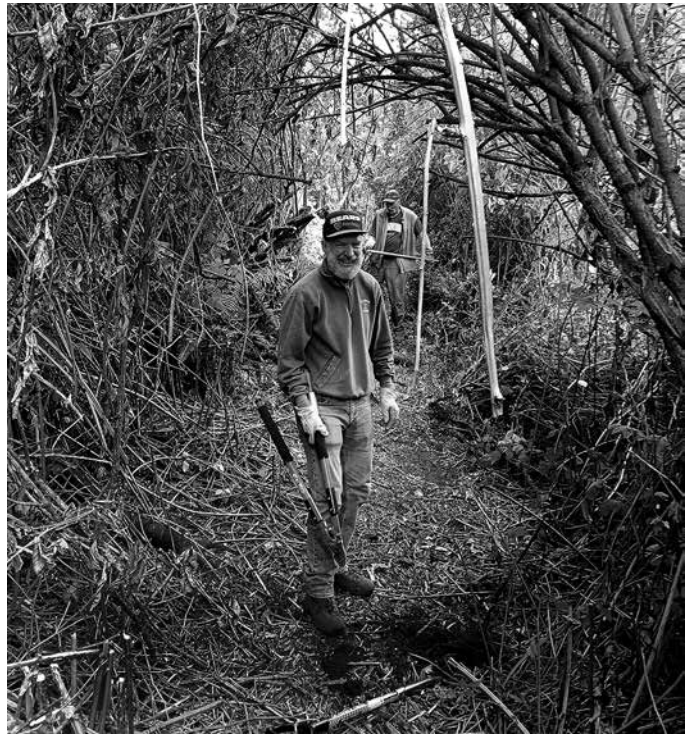
Monday/Wednesday/Friday: Trail Club Group. Meet at the golf club parking lot at 8 a.m. for a self-led walk on the abandoned golf cart path trail or other alternative route.

For more hiking information, a map of the Port Ludlow Trails, and descriptions and pictures of previous hikes and other destinations, go to portludlowhikingclub.com.

Trail Mix

by Larry Scott, Trails Chair

"Port Ludlow—A Destination Hiking Village"



Damon Finney and Chris Wheatley in the blackberry arches of the OBT extension.

Photo by Larry Scott

"Did we make it to the ABT from Walker yet?" you might ask. "Last month's *Voice* announced that the OBT extension was next on Trails' agenda," you say. Well, at the risk of waffling, the answer is *Yes* and *No*. *Yes*, we thought we had a clear go-ahead but missed an approval step along the way so *No*, we needed to postpone the all-out "1-2-3 GO." Now, however, *Yes*, we have progressed with flagging the route, actually two optional routes, and hope to be close to going full-out on this final segment of the OBT by the time this Trail Mix is being read.

What else for Trails? The season's last mowing has been completed so that's a done deal. Although along the way while mowing, a significant number of trails were identified as needing their side growth encroachment cut back, so that will rise to the upper area of the TO-DO list. Downed trees (the typical alders) needed clearing on Timberton and Springboard trails, too. Speaking (actually writing) of Springboard Trail, the local HOA for Olympic Terrace II has requested that the Springboard Trail entrance at the Mt. Wilder Cul-de-Sac not be used while the busy traffic associated with Richmond Homes construction is ongoing. As

an alternative, the Springboard Trail connection at Niblicks Loop is open and available if you want a hike to the DNR Trails and then return to Mt. Wilder via the DNR connecting trail to the Olympic Terrace II Trail.

Be on the lookout next year for an updated map that will include all of our new additions. With some luck, the three websites that already include some portion of our trails will also update their coverage—Washington Trails Association, ALL Trails, and Google Maps.

Anything else? Trails annual report to our PLVC will be on **Tuesday, October 21**, at the Bay Club if you are interested in catching a year's worth of recap presentation.

If you want to come out for a Fun Day of camaraderie while helping to improve our community, send me an email at mclgscott@cablespeed.com.
“Let's Keep Improving our Trails.”

Port Ludlow Yacht Club says, “Hold On, It Ain't Quite Over Yet!”

by Greg Buscher, PLYC Communication Manager

Port Ludlow Yacht Club (PLYC) had an amazing summer for cruising and parties at the Wreck Room, and boating season still carries on under smiling skies. Sort of, mostly. But we do see fall pressing its nose to our windows and we know – summer is ending. Many members are thinking about winterizing their boats and battening down the hatches in port, though some hardier souls will continue to voyage through the cold wet months; a few going thousands of miles. The good news is that with nearly everyone back in port, the Wreck Room is even livelier! The fall line-up of parties, potlucks, and get-togethers is looking good (our calendar is posted at the Yacht Club and around the marina).

In recent news, PLYC and Edmonds Yacht Club got together over Labor Day weekend for a fun day of golf here in Port Ludlow. In early September, PLYC's parking lot was the scene of the annual East Jefferson Rotary Club car show – a fantastic event and important fund-raiser in support of Rotary's wonderful work in our community. And of course, the Wreck Room is open every Wednesday and Saturday evening, giving members a welcoming place to exercise their creative culinary skills and enjoy company and cocktails.

Finally (for now), when fall hits in earnest, there comes a highlight. The annual PLYC Halloween Party will be on **Saturday, October 25**, at 7 p.m. Scary good!

If you are interested in joining us, we'd love to invite you to an event as our guest. Just complete the inquiry form on our website at plyc.us/visit, and we'll be in touch. Hope to see you soon!

News continued from page 11

League of Women Voters-Jefferson County Requests for Questions

October 16 – 23 Candidates Forum

The League of Women Voters-Jefferson County encourages members of the public to submit questions for our upcoming October Candidates' Forums.

Thursday, October 16 forum will feature the two candidates for East Jefferson Hospital Commissioner – Stuart Kerber and Matt Ready

Tuesday, October 21 forum will feature the two candidates for Port Commissioner – Clayborn Burleson and Carol Hasse

Wednesday, October 22 forum will feature the two candidates for Quilcene School Board District 2 – Jon Cooke and Naomi Stern

Thursday, October 23 forum will feature the two candidates for the Port Townsend School Board Position 4 – Amanda Grace and Timothy Hawley

All forums will begin at 6 p.m.

Please submit your questions to lwwjefcowa@gmail.com no later than noon on **October 13**. Concise, unbiased questions directly related to the candidates' positions and policies will be given priority, and similar questions will be combined. We strive to ensure that questions reflect a wide range of concerns from our county's multiple constituencies.

The one-hour forums will be on zoom and our media partner KPTZ 91.9 FM will simulcast the forums and livestream them at kptz.org. Links to the forums, which will be recorded, can be accessed by computer, tablet, or phone, and will be posted on the League's website at lwwva.org/Jefferson after the forums are concluded.

For additional information, please contact the League of Women Voters-Jefferson County at lwwjefcowa@gmail.com.

Emergency Numbers

EMERGENCY and Important Local Services

For Immediate FIRE, MEDICAL, or POLICE Emergencies:..... 911

Other Local Services Numbers:

For general community services211

For help with telephone-related speech or hearing problems711

Before you dig (to avoid underground utilities, etc.).....811

Suicide and Crisis Hotline (988 Lifeline)..... 988

Medical Services: (Always call 911 for immediate emergencies!)

Jefferson Healthcare Hospital in Port Townsend 360-385-2200

Jefferson Healthcare Port Ludlow Clinic.....360-437-5067

Jefferson Healthcare Express Clinic (7th Street Clinic, Port Townsend)..... 360-385-2204

Port Ludlow Pharmacy 360-379-2254

Fire, Police, and Other Services NON-Emergency Contacts:

Jefferson County Sheriff360-385-3831

Port Townsend Police 360-385-2322

East Jefferson Fire Rescue 360-385-2626

Quilcene Fire Department360-765-3333

Port Ludlow Fire 360-437-2236

Brinnon Fire Department 360-796-4450

Discovery Bay / Gardiner Fire 360-797-7711

Jefferson County PUD 360-385-5800

Olympic Water and Sewer (emergency number).....877-826-5787

Olympic Water and Sewer (office number)360-437-2101

Murrey's Olympic Disposal / Waste Connections 360-452-7278

Veterinary Services:

Humane Society of Jefferson County (strays, injured wildlife, etc.) 360-385-3292

Chimacum Valley Veterinary Hospital..... 360-385-4488

Hadlock Veterinary Clinic..... 360-385-2020

Harborside Veterinary Care..... 360-302-9300

Shine Mobile Veterinary Services.....360-302-6077

Classifieds

The monthly cost of classified ads is \$17 for less than 25 words and 60 cents per word thereafter. There is a prepayment discount, 10% for 6 months or more. We accept "personal" ads such as public "thank you" ads. We do not accept ads of a political nature. The deadline for new ads, changes, and cancellations is the 8th of the preceding month. We send out invoices on the 1st of the month. We normally send emailed invoices but will mail them if you request. Ads will run until canceled. Cancel ads by sending email to classified@plvoice.org. You may pay by check, money order, credit card or bank transfer. Email your ad and contact information (name, billing address, phone numbers, and email address) to classified@plvoice.org.

COMPUTER & TECHNOLOGY

PT Computers: we work on Apple, Windows and Linux computers. Diagnostics & Repairs, Virus Removal, New Computer Set Up. We Sell: Printer Ink, various cables and Adapters, Phone chargers/cables. 360-379-0605.

FINANCIAL SERVICES

Accounting: Bookkeeping services, payroll & payroll taxes, tax return preparation. Need someone to get your books ready for tax season or to keep the books up to date? Do you need help with personal or business tax return preparation? More than 20 yrs. experience. email Rhonda at r3granger@gmail.com or call 360-358-5340 for more info.

FOOD & BEVERAGE

Dinners To Go service offered by GBF Catering on Tuesdays and Fridays. Order online and see additional information at GBFcatering.com. Catering services available in Jefferson, Clallam and Kitsap Counties. For more information call 360-774-0848.

Baker 4 hire: Offset Bakery will cater your next event. Cookies, cakes, scones, quiche. Pies the limit. Email offsetbakerywashington@gmail.com

HEALTH & BEAUTY

Physical Therapy in Port Ludlow. Active Life Physical Therapy. Our services include balance training, spinal rehabilitation, vertigo treatment, and joint replacement therapy. Medicare accepted. 360-437-2444. Michael@activelifetherapy.com.

Tootsies: Manicures & Pedicures. 7551 Oak Bay Rd (across from Port Ludlow Fire Hall) Available by appointment, 360-437-2332. Neighborhood fun!

Caregiver Available in Port Ludlow. Providing in-home care services, light housekeeping, errand and grocery assistance, medical transportation, and companionship. Certified and Experienced. Call or text Susan at 360-301-0200.

A cleaner healthier body fixes itself. Safely detox heavy metals and Volatile Organic Compounds (VOC's) from the body. Lose weight safely/effectively. Catherine 360-774-1431.

Sacred Healing Arts: Acupuncture, Sound healing, barefoot massage, cranial and nerve therapies to clear unprocessed emotional trauma to connect you with your embodied joy! Contact Jillian Rifkind L.Ac, EAMP at 360-523-2091 or visit joypointclinic.com. 9481 Oak Bay Road.

HOME RENOVATION & DÉCOR

Quality Painting with Affordable Pricing. Exterior, interior. Pressure washing. Lots of local Port Ludlow references. Bonded & insured. License CBSPAP*917CD. Call Tony Forrest, owner, CBS Painting, for a free estimate. 360-633-5702.

Arnett's Affordable Home Improvement - All remodeling and home repair, Kitchen and Bath Specialist, Tile, Stone, Hardwood and Laminate flooring, Construction, and repair of Decks. "When you want it done right the first time-call us!!" Arnett General Construction 360-477-1935; WEB.constructiontilepro.com; CCDONARAG875DL; local references.

Ludlow Custom Contractors. Specializes in custom home painting, decks, & finish carpentry. Contractor's License #MOSHECJ994MC. Christopher Mosher, 360-301-9629. "Custom Designing Your Dreams."

JDG Construction Inc. 30 years in local business. Free estimates on remodel & new construction, 360-385-3287.

Do It Right Roofing & Construction. High quality roofing & construction & remodeling. Owner on every job. General contractor Reg. #DOITRIR943QL. Locally located in Port Ludlow. Excellent local references. 360-774-6348.

Professional Tile & Grout Cleaning/Sealing. Clean Grout Northwest, re-grouting, re-caulking. Cleaning & sealing, ceramic, porcelain, natural stone. Licensed, bonded, insured. Lic#GROUTGN905DJ, 360-621-1730. cleangROUTNW.com.

Dave Peterson Tile & Stone. Kitchen, bathroom and daylight basement remodel. General Contractor. Bonded, insured, Lic#CCDAVEPPT943DW. 40 years experience. 360-681-2133

HOME SERVICES

Legion of Clean. Jefferson County's #1 Cleaning Service (2021-2024)! Professional, reliable, licensed, bonded, insured & woman-owned. Delivering spotless homes with care and excellence! Call/Text: 360-344-8409 legionofclean.com.

Pristine Clean Gutter and Moss Removal: Commercial and Residential. Tile, Comp, Cedar and Metal rooftops, Gutter repair, Moss prevention plans. Pressure Washing, Siding and Surfaces, Gutter Guards. Licensed and Insured. Call: 360-990-2679 or 360-440-2238.

Window Blind Restrings and Repairs. Most cases same day service. Give James a call @ R&M Services 360-301-2683, Port Ludlow Resident.

JC's Painting and More. Painting--drywall repair & finishing--carpentry-handyman tasks and more. 20% labor discount, with this ad, interior jobs, Nov-March. Free Estimates 360-550-6101. Lic. # JCSPAPM919DS. jcspaintingandmore.com.

Experienced house/pet sitter for travelers. Light hauling and helping hands. Outstanding references. Gary 425-422-9709

Home Maintenance & House-Sitting: Painting, electrical, plumbing, roof repair, drywall, light remodel, landscaping, decks, hauling, pressure washing, general labor, house and pet sitting services and more. Call or text. David 360-301-9012.

Pressure washing is our specialty. Make it look new again with Eco-Clean pressure washing services! Driveways, patios, decks and more. www.EcoCleanWA.com or call us 360-531-4821.

Overwhelmed? Need help housecleaning? Call Home Team Housecleaning 360-860-2774 sheryllara@hotmail.com. We've been a team since 2016: committed, punctual, honest, friendly and skilled. Excellent references.

QuilClean, LLC House Cleaning Service. Licensed, bonded, insured. Serving Port Ludlow to Quilcene. Call Bonnie 360-302-0379 or visit www.quilclean.com.

LANDSCAPE & YARD SERVICES

Brett's Stump Grinding. Goodbye ugly tree stumps! I'm professional, reliable, & reasonably priced. For info & to see before & after photos, go to bretts-stumpgrinding.com or call Brett Aniballi at 360-774-1226.

Field's Tree Care LLC is a Certified Arborist here to help you with all your tree & shrub needs. Fine Pruning. Free Estimates. Licensed, bonded, insured. Lic. # FIELDTC876DH. Dan Field 360-994-0166.

Irrigation repair, maintenance, and automatic flower bed systems. Seasonal start up and shut down. Call Wayne 360-643-3114. Email waynegrassman@aol.com.

Green Sun Landscaping: Call today for your free estimate, retaining walls, sprinkler systems, patios, garden clean ups and more... your satisfaction our priority (360-620-3156)

LEGAL SERVICES

Secretarial Services. Call Cammy Brown, Peninsula Legal Secretarial Services, LLC, 360-301-2590, cammybrown.com, for all your business and legal secretarial needs. Transcription, preparation of legal and business documents, typing projects, etc. I now have a second office inside the Post Office in Port Ludlow. Same phone, etc. By appointment only.

Notary Public: For Notary Public services call Cammy Brown, Peninsula Legal Secretarial Services LLC, 360-301-2590, located in Kivley Center, Port Hadlock and the Post Office in Port Ludlow, by appointment only.

MISCELLANEOUS

Rare Earth Music Studio. Lessons in Guitar, Piano, Voice, Ukulele, Mandolin, Composition, Music Theory. Serving Port Ludlow, Chimacum, Port Hadlock-Irondale, Port Townsend. Contact RareEarthMusicStudio.com/contact

Elena's Alterations & Tailoring. Providing professional seamstress services since 1992. For only the highest quality alterations or tailoring, call Elena today 360-437-9564(h), 206-305-1101(m).

Speed Limit
in Port Ludlow Bay is
5 knots
- No Wake, It's the Law! -

REAL ESTATE

Port Ludlow South Bay lot for sale 999 Highland Dr. Sunny, gently sloping 1/3 acre lot, one of last remaining, build-ready with utilities at curbside. Two blocks from golf course clubhouse. Details photos contact pam@pambegleyrealtor.com of Coldwell Banker or rgillandersLLC@gmail.com

RV/BOATING/TRAVEL

RV Storage. South Bay, 1 mile west of Hood Canal Bridge on Hwy. 104. Call Shirley, 360-437-9298.

Financial Disclosure

The *Port Ludlow Voice* is a 501(c)(4) organization. Its entire staff consists of unpaid volunteers. All writing and editing is done in the homes of staff members on their personal computers. The production editor formats each issue and provides an electronic copy to the printer. The *Voice* is delivered at no cost to readers on all U.S. Post Office carrier routes in the Master Planned Resort (MPR).

Financial support for publishing the *Voice* each month comes from advertising, subscriptions and contributions primarily from community organizations. Average monthly income is:

1. Ludlow Maintenance Commission (LMC).....	\$300
2. South Bay Community Association (SBCA).....	\$300
3. Port Ludlow Village Council (PLVC).....	\$200
4. Display Advertising	\$6,050
5. Classified Advertising	\$1,287
6. Subscriptions.....	\$49
7. Web Advertising.....	\$108

Subscriptions: Per year \$42; \$3.50 per month.
Gift issue, \$5

This issue proofread by: Carol Riley, Mary Small, Jim Gormly, Paula Berman and Dana Steward.

©2025 **Port Ludlow Voice.** All rights reserved. Printed in the U.S.A. No part of this publication may be reproduced in any form without express written permission of the *Port Ludlow Voice*.

Paper Content: The *Voice* uses stock that is acid free and meets the sourcing requirements of the Sustainable Forest Initiative.

The printing of an article, or of classified or display advertising, does not necessarily constitute endorsement by the *Voice*.



Don't get spooked by the housing market.
We'll help make your experience more treat than trick.



Chuck Hynden



Becky Belding

Windermere
REAL ESTATE
PORT LUDLOW



Bill Barnet



Sarah Perkins

360 797-9344 9483 Oak Bay Road



NORTHWEST
ESTATE PLANNING & PROBATE, P.S.

Located in Port Ludlow with a Satellite Office in Seattle
Serving Jefferson, Clallam, Kitsap, Pierce, King & Snohomish Counties

Amanda Wilson
Attorney at Law

Hunter Chapa
Associate Attorney

Estate Planning: Trusts & Wills
Probate & Trust Administration
Medicaid Planning, Elder Law
Guardianships, Estate Disputes,
Powers of Attorney, Health Care Directives
Community & Separate Property Agreements
Minors Trusts, Special Needs Trusts, Pet Trusts
A/B Tax Shelter Trusts
Tax Planning & Wealth Preservation

Contact Us for a Complimentary Estate Planning Consultation www.NWEPP.com or 360-437-4172

©2021

You're in Good Company

With local decision makers and leaders from right here in your community

ASK US ABOUT:

Business Checking
Business Loans
Sweep Accounts
Nonprofit Lending
SBA Loans

Darrell Jenkins
VP Community and Business Banking Officer
Darrell.Jenkins@fsbwa.com
(360) 406-5396

Wendy Duede
SVP Market Sales and Support Manager
Wendy.Duede@fsbwa.com
(360) 537-1577

1ST SECURITY BANK
FSBWA.COM 



Grace Christian Center
Solid, Spirit-Filled Bible Teaching

Grace Christian Center is celebrating its 23rd year of serving our Lord Jesus here in the Olympic Peninsula. Planted in Port Ludlow, Grace Christian Center is a regional church, with people traveling from all over the County to worship with us. The Bible is our text book—we work hard to bring relevant teaching with an understanding of history, context, and current application in our very real and daily lives.

Grace Christian Center: Where we love Jesus first and foremost; where we love His Word and His presence; where we love His people, where your family can be a family in the presence of the Lord.

We invite you to worship with us Sunday mornings at 10.

Pastors Kevin and Sherri Hunter
Senior Pastors

360-821-9680 360-821-9684

Port Ludlow Conference Center • 200 Olympia Place, Port Ludlow
www.gracechristiancenter.us

Loving Jesus and Loving Each Other

Right here when you need specialty care.

dermatology
oncology
orthopedic
rheumatology
pulmonology
neurology
respiratory
gynecology
cardiology
urology

Jefferson Healthcare's new building provides space for new specialty services, as well as expanded space for existing services our community relies on. More than bricks and mortar, this expansion represents our commitment to keeping care local.

Learn more: jeffersonhealthcare.org