



# PORT LUDLOW **VOICE**

*Serving the Village of Port Ludlow since 1998 November 2019*

[www.plvoice.org](http://www.plvoice.org)





KJ knows Port Ludlow and can help whether you're interested in selling or buying a home.

(360) 316-9246  
kj@cbbesthomes.com



Karen "KJ" Brattain  
9522 Oak Bay Road  
Port Ludlow, WA 98365



## Your IRA shouldn't stop working when you do.



**Shelli K. Cates**  
Financial Advisor

201 West Patison Street  
Port Hadlock, WA 98339  
360-379-0170

**Edward Jones**  
MAKING SENSE OF INVESTING

Member SIPC

Celebrating over 65 years!



### Port Ludlow

9500 Oak Bay Road  
Port Ludlow, WA 98365

### Port Angeles

110 N. Alder Street  
Port Angeles, WA 98362

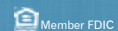
### Sequim

645 W. Washington Street  
Sequim, WA 98382



**SOUND**  
COMMUNITY BANK  
Simply better here.

soundcb.com | 800.458.5585



Come sink your nails into our wood.



DECKING | FINE WOOD FLOORING | CRAFTWOODS



**EDENSAW SHOWROOM**  
211 SETON ROAD  
PORT TOWNSEND, WA 98368  
360.385.7878 | 800.745.3336  
EDENSAW.COM

Come meet Gabby.

**EDENSAW**  
WOODS LTD.

## See Whales In The Wild



Gray Whale Tours

4 Hour Whale Watching Tours

Full Day San Juan Island Whale Watching Tours

3-Day Bird, Wildlife, & Photography Cruises



**Guaranteed  
Whale  
Sightings**

PugetSoundExpress.com | 360-385-5288  
Point Hudson Marina | Port Townsend

The mission of the *Port Ludlow Voice* is to inform its readers of events and activities within the Village and in close proximity to the Village. We will print news articles that directly affect our local residents.

Published monthly by an all-volunteer staff.

### INSIDE THIS ISSUE

Arts and Entertainment	17
Bay Club / South Bay	28
Beach Club / North Bay	26
Classifieds	35
Community Meetings	15
Features	4
News	8
Sports & Games	31
Village Council	24
Village Activities	25

### The Voice Online

*plvoice.org*

**Breaking news and announcements:** Find information that was not available when the *Voice* went to press.

**Expanded Articles:** Read complete versions of articles, and articles appearing only online, on the announcements page.

**Local Artists:** See examples of local artists' work and get contact information. See the performing arts schedule.

**Letters to the Editor:** Read comments, criticisms, and suggestions from other readers on Read Online.

**Advertising Information:** Find out how to place classified and display ads. Access advertising websites from ads.

**Voice Archive:** Locate current and any previous issue of the *Voice* with Read Online. Scan for specific topics using our search engine (home page).

**Web Cams:** Get up-to-date weather and road information (home page).

**Archived Voice Issues Online:** Copies of every issue of the *Voice*, beginning in August 1998 and continuing all the way to the present one, are at *plvoice.org/readonline*. Also, there is a search box on every page of our website. Look for it on the right under the Menu Bar, and then type in a few key words. A list of possible issues will appear. Happy hunting!

## Port Ludlow Voice

P.O. Box 65077, Port Ludlow, WA 98365

*www.plvoice.org*

Send articles to *editor@plvoice.org*

### Editorial Staff

#### Managing Editors

Maggie Blackburn, *mblackburn@plvoice.org*

Mary Ronen, *mronen@plvoice.org*

#### South Bay Community Association and Bay Club Editor

Jenise Harper, *jharper@plvoice.org*

#### Ludlow Maintenance Commission and Beach Club Editor

Leslie Carlson, *lcarlson@plvoice.org*

#### Arts and Entertainment Editor

Beverly Rothenborg, *brothenborg@plvoice.org*

#### Copy Editor

Maggie Blackburn, *mblackburn@plvoice.org*

#### News Editor

Maria Escobar-Bordyn, *newseditor@plvoice.org*

#### Village Council Editor

Valerie Goree, *vgoree@plvoice.org*

#### Regularly Scheduled Activities Editor

Kathie Bomke, *kbomke@plvoice.org*

#### Sports Editor

Tim Propeck, *tpropeck@plvoice.org*

### Business Staff

#### Finance Manager

Cathy Thomas, *finance@plvoice.org*

#### Classified Advertising Manager

Bill Blackburn, *voiceclassified@plvoice.org*

#### Display Advertising Manager

Jo Buck, *jbuck@plvoice.org*

#### Distribution Manager

Denny Schuch, *dschuch@plvoice.org*

#### Production Manager

Mary Ronen, *mronen@plvoice.org*

#### Photo Editor

Jay Syverson, *jsyverson@plvoice.org*

#### Web Manager and Subscription Manager

Sarah Clawson-Schuch,

*plweb@plvoice.org*

*subscription@plvoice.org*

### ON THE FRONT COVER

Season of Change.

Photo by Jay Syverson

# Feature Articles

## Exploring Our Autumn Leaves

by John Goldwood, Contributing Writer

As I drove west across the Hood Canal Bridge in early October, the morning sun illuminated a decidedly muted autumnal tone in the forested banks on the west side of the canal. The deciduous Bigleaf Maple trees (*Acer macrophyllum*) that frequently provide blazing golden contrasts to the conifers are not producing much color this year as they prepare to shed their leaves, and I thought it might be worthwhile to explore the autumn leaf cycle here in Port Ludlow. Where do our autumn colors originate, and why is there so much variability from one year to the next?

Most of us are aware that our local forests are composed of deciduous trees that shed all their leaves annually in the fall and conifer (evergreen) trees that shed their needles throughout the year. Conifers always retain enough chlorophyll-infused needles to continue the work of converting sunlight into food—photosynthesis—throughout the year. Here on the Olympic Peninsula, the benefits of a tree growing year-round are obvious: the largest deciduous trees, even a very old Bigleaf Maple, cannot approach the height, size, mass, and age of any of the oldest most common conifers—Western Red Cedar, Douglas Fir, and Western Hemlock.

For deciduous trees, the combination of shorter days and cooler temperatures are primary factors in triggering a seasonal process called *abscission*, which ultimately produces the appearance of that wonderful tapestry of red, orange, yellow, and pure golden colors that delight some of us throughout September and October. During abscission, trees first re-absorb any remaining nutrients still available in their leaves, a process that includes breaking down the remaining chlorophyll (green) which in turn exposes the underlying leaf pigments that bring fall color. Ultimately, abscission leads to the separation of a leaf from its supporting stem or branch, and a protective cell cap is formed that protects the stem after leaf separation. When all leaves have fallen, the tree is prepared for winter rest.

Although the color change may seem simple at first glance, there is huge variability contained within that chemical process. Many of us who have a favorite autumn tree, whether a native (i.e. “wild”) or horticultural variety, have noticed the significant range of color outcomes from one year to the next. Some years, a tree might provide intense colors, while other years the same tree might provide virtually no color. Why is that?

Let’s look at the two major sources of color in tree leaves: pigments contained within the leaves themselves, and a host of environmental factors that all work together to determine whether the fall color is intense or barely noticeable. Most leaf colors are provided by four classes of pigments: *chlorophylls* provide the typical green leaves that we see throughout the growing season, *carotenoids* and *xanthophylls* provide the yellows and oranges, while *anthocyanins* provide the reds. Although this description is somewhat simplified, most leaves include carotenoids and xanthophylls throughout the life of the leaf. Those pigments

assist chlorophyll in photosynthesis but are hidden by the intense green of chlorophyll; their yellow and orange pigments are revealed as the chlorophyll in the leaves disappears.

Anthocyanins are much more variable and their production and storage in a leaf can vary greatly, not only from one tree to another but even within the branches and leaves of the same tree. Although not clearly understood, it is believed that anthocyanins help leaves by protecting them from too much sunlight and dryness during the growing season and assist the reabsorption of nutrients as the leaves proceed through abscission. The environmental factors noted below largely determine how much anthocyanins will be produced in the leaves.

It should be noted that a genetic component drives leaf color as well. You will rarely if ever find a red Bigleaf Maple leaf, regardless of variable environmental factors, but you can frequently enjoy the beautiful shades of red from the Vine Maples (*Acer circinatum*) that are often visible along our hiking trails and roadsides throughout the peninsula. The genetic make-up of the species makes the difference.

In terms of environmental factors, consider the following as a starting point:

- Rainfall throughout the growing season: when it falls and how much
- Sunlight vs. cloud cover and when, during the growing season, the sunlight occurs
- Temperature ranges: how hot or cold, and when the temperatures occur
- Soil conditions: pH (alkalinity or acidity)

For an individual tree, even this simplified view suggests a large number of possible outcomes. On a good year for “leaf-peepers,” the environmental factors all align to produce spectacular autumn foliage, but it takes only one negative impact from any of the weather-related factors to cause a substantial reduction in color.

The most common native deciduous trees in our local forests are Red Alder, Bigleaf Maple, and Vine Maple. Our Red Alder tree leaves produce virtually no color in any year, with the leaves falling from the tree either while they are still green or having turned various shades of brown (the red portion of the name originates from the color of the spring catkins). This year, as noted earlier, most of our Bigleaf Maples are also showing little color, but there are exceptions, some of which can be enjoyed as you drive Oak Bay Road toward Port Hadlock. At this point, even the Vine Maples (including the one in my yard whose color I have been eagerly anticipating) are showing minimal color. I’m hoping to find brighter colors as I explore the roadsides west of here on the way to Sequim, Port Angeles, Lake Crescent, and beyond.

Some readers may note plenty of color in *their* neighborhood; for example, the street trees in the Village Center have been putting on a show for the last few weeks. Many of our landscape trees have been developed over time to produce much more consistent

*continued on next page*



*Leaves continued from previous page*

autumn color. Recall my earlier comment regarding genetic factors impacting leaf color? Those trees have had their gene pools enhanced to produce more consistent color outcomes year after year. If you drive our village streets this fall, one way to differentiate native from non-native trees is to note their colors. Those beautiful maples, glowing scarlet in front of Kitsap Bank? Like so many of us, “they’re not from here.”

One final note on autumn color. The Western Red Cedar trees that are common everywhere in Port Ludlow, including our trails, yards, and the golf course, are showing more color right now than I recall seeing before; at least in our trees, there is a vivid orange color on a number of the small branches. This is a phenomenon called “flagging,” and I believe it is the result of our very dry (borderline drought) conditions this past summer. Cedars prefer a moist environment overall, and when stressed by a lack of moisture, will self-prune their older, less productive branchlets to direct energy into the more productive new growth on the tips of the branches. If you note the cedar trees that you see throughout the peninsula right now, you will see a very consistent display of the flagging process. This is not a cause for alarm yet, as the cedars and most other conifers in our area can survive multiple years of drought before they become threatened.

Although a lot of color change in deciduous trees can happen in 30 days, I expect there will still be colors to enjoy when the November *Voice* issue is published. If so, I hope this brief overview will increase your enjoyment and appreciation of the complex processes that lead to a beautiful autumn season.

## Thanksgiving Day—a Rowdy Tradition

*by Jenise Harper, Contributing Writer*



The First Thanksgiving by artist Jean Leon Gerome Ferris.

Submitted photo

Thanksgiving Day holds special significance for me. I was born on Thanksgiving Day, November 26, 1942. My son was born on Thanksgiving Day, November 26, 1970. And we moved to our home in Port Ludlow on Thanksgiving Day, 2018. So, as I celebrate faith-based holidays with reverence, I experience Thanksgiving with an extra dose of gratitude.

While celebrations to “give thanks” have historic origins long before the gathering at Plymouth, it is that three-day harvest feast in 1621 that drew together the English colonists (known as Pilgrims) and the Wampanoag people, and gave rise to our current Thanksgiving Day. Today’s splurge of over-imbibing, over-eating, and over-reacting to football games might be considered a parody of the reason for the season—giving thanks for our blessings.

Yet, picture this. Imagine a few of the colonists, probably some of the men, going out “fowling,” most likely for turkeys but also for geese and ducks. It’s been recorded that they “in one day killed as much as served the company almost a week.” Then, quite to the colonists’ surprise, 90 Wampanoag, who thrived under the leadership of King Massasoit, appeared at the settlement, bringing venison and fish. Add to that the harvest contributions of vegetables and fruits (thanks to the knowledge and assistance of the indigenous population), plus apple cider, home-crafted brews, and corn liquor ... it’s quite understandable why that first Thanksgiving lasted several days.

Where’s the video camera? It could have caught Pilgrims and Native Americans sitting together, some on the ground and others on barrels or logs, with hand-hewn plates on their laps. The men fired guns, ran races, drank liquor. Broken English and Wampanoag were combined in attempts at conversation, coupled with crude sign language and much gesticulation. Hand-written journals suggest it was a rowdy affair. Disorderly though it may have been, the harvest gathering served to seal the treaty between the two groups. What a pity it lasted only until 1675-76 when hundreds of colonists and thousands of Native Americans lost their lives during King Philip’s War.

The Continental Congress attempted to create a national Thanksgiving Day holiday in 1798, but the southern states resented having a New England ritual foisted upon them. The idea of a national day of thanksgiving seemed a lightning rod for dissent, rather than a unifying idea. It wasn’t until Northerners dominated the federal government that Abraham Lincoln proclaimed a national Day of Thanksgiving be celebrated that year, 1863, on Thursday, November 26.

After that first national celebration, subsequent presidents chose the date for an “official” Thanksgiving Day each year. It varied, occasionally, but was most typically the last Thursday of November. The U.S. National Archives says that “in 1939, with the last Thursday in November falling on the last day of the month, Franklin D Roosevelt became concerned that the shortened Christmas shopping season might dampen economic recovery. He therefore issued a Presidential Proclamation moving Thanksgiving to the second to last Thursday of November. Some 32 states consequently issued similar proclamations, but 16 states refused to accept the change. As a result, for two years two days were celebrated as Thanksgiving.” Ultimately, President Roosevelt declared the fourth Thursday as the official Thanksgiving Day, and all states complied.

The origin of the Thanksgiving tradition of having the president of the United States “pardon” a hand-selected turkey has been attributed to President George H. W. Bush. However, according to the National Archives, the first “pardon” may have occurred

*continued on next page*



*Thanksgiving continued from previous page*

when Abraham Lincoln was president. His son Tad begged him to write a presidential pardon for the bird meant for the family's holiday table, arguing it had as much a right to live as anyone. Lincoln complied, and the turkey lived.

It is of note that Thanksgiving is more popular with travelers within the United States than any other national holiday. Planes, trains, and automobiles are filled with folks planning to talk (and eat) turkey with family and friends over the four-day weekend. If you're among those out and about with loved ones, be safe ... be thankful!

## Swansonville Church Update

by Tim Rensema, Contributing Writer



Swansonville Church.

Submitted photo

In the July 2019 edition of the *Voice*, I wrote an article on the history of the Swansonville Church and its relevance to the history of Port Ludlow. This church is the only remaining structure that exists connecting our Port Ludlow community with the past. It has been sitting derelict for some time, slowly feeling the ravages of weather and time. However,

Swansonville community members are quickly making efforts to save this landmark structure. Their recent "Friends Helping Friends" fun day, that occurred on September 21, resulted in repairing leaks, stabilizing the structure, and painting the church, creating a shining beacon for those driving up Swansonville Road.

The steeple tower, however, will take much more than a facelift to save. The rescuers are evaluating different methods with a structural engineer to save the tower and provide a completely renovated building. Currently, the funds are unavailable for taking on this stabilization. Like any old building, if you are careful in your work, you will find little treasures of the past that only enhance the value of the renovation. In cleaning the attic out, various items were discovered, including the original oil lamps which hung on the rafters. These lamps will be polished up and be put into use again in the renovation. When searching under the church, original wooden doors were found with the hardware still attached. While the doors are in very poor shape and can't be reused, the hardware will be reclaimed and possibly used in the renovation. Special care is being taken to ensure that the character and appearance of the church meet the requirements for a state historic site. In the steeple of the church, the old bell still hangs, ready to remind people of the coming service. Perhaps it may ring again in the not too distant future.

Swansonville Church was originally built as a non-denominational church and this was written into the documents of deed from Hans Swanson to the community. It remained a non-denominational church up until the last member ceased attending. Swansonville was of immeasurable value to the early town of Port Ludlow. The farmers (who were also workers at the mill and the docks) were principally of Scandinavian heritage contributing to a close-knit community, providing eggs, meat, milk, vegetables, and fruit for the town. The Swansonville community supported Port Ludlow by providing the church and Forest Hill cemetery. Port Ludlow in return provided jobs, services, and access to the rest of Washington through the ferry and road network. Swansonville today is still within the Port Ludlow zip code but is one of the independent "villages" such as Mats Mats and Paradise that fall within the postal zip of Port Ludlow. All of these separate villages, in the past and still, provide major support to the Port Ludlow community. As such, while most of us in Port Ludlow are "from away" by being members of the Master Planned Resort community, we are also members of the greater Port Ludlow community and should be proud of the heritage this area provides to Jefferson County and Washington State.

Current plans are for the structure to continue to provide a community space for the village as well as a museum to capture life during this part of Jefferson County's development. The Friends of Swansonville ([friendsofswansonville.com](http://friendsofswansonville.com)) are initiating a fund drive to support not only the renovation of the church, but the purchase of the parsonage next door. Immediate plans would be to provide housing, so important to our community, until the non-profit is ready to take on conversion to a museum/heritage park. Friends of Swansonville (FOS) have teamed up with the Jefferson County Historical Society (JCHS) to create a non-profit 501(c)(3) site for donations. On the FOS website there is a donate button that is linked to the JCHS-FOS account, where your donation will be accepted. These funds are then directed specifically into the FOS account.

A museum capturing the importance of the Port Ludlow community to the development of Jefferson County, located here in the middle of Eastern Jefferson County, would be a valuable resource for the entire community.

## The Air Plant, Tillandsia

by Eline Lybarger, Contributing Writer

Without soil the tillandsia plant looks like it is surviving on air, but it still needs water and nutrition. Through trichomes, hair-like appendages along their leaves, they are able to absorb water and nutrients from organic material, such as dead leaves and insects, in their surrounding area. They might grow on other plants but use them only for support, not nutrition.

A member of the Bromeliaceae family, tillandsia comprises 600 species originating in the southern United States, Central and South America, and the West Indies. Only a few have been developed commercially. Spanish moss (*T. usneoides*) is one of the most popular retail plants. Harder to find but valued for its impressive size, about the size of a dinner plate, *T. xerographica*

*continued on next page*



*Air Plant continued from previous page*

demands strong light and quick evaporation of any water that might collect in its rosette structure, which will cause it to rot.



Other tillandsia prefer bright, indirect light—no direct sun—and a weekly bath for about two hours. Be sure not to get any blossoms wet. You might need to use bottled water where there is a high mineral or chlorine level in the local water. For fertilizer, use a low nitrogen at one-fourth strength, like a bromeliad fertilizer, not more than once a month.

A healthy plant might not bloom for years, but it is worth waiting for the tiny neon flowers. A plant can be encouraged to bloom by reducing fertilizer and water in the fall. However, once a tillandsia has flowered, growth of the meristem stops, and it produces pups. The main plant will eventually die, but when the pups are about half the size of the parent, use a sharp knife to detach them as close to the base as possible.

Their tiny size and no need for soil allow for considerable creativity in displaying tillandsia. Attach one to a refrigerator magnet with a drop of glue (water magnet and plant); balance one in a shot glass; wire one onto a piece of driftwood (be sure not to use exposed copper wire); or hang Spanish moss from a wooden bowl suspended like an ornament. The options are endless.

## What's Killing the Cedars?

*by Jen Portz, Contributing Writer*

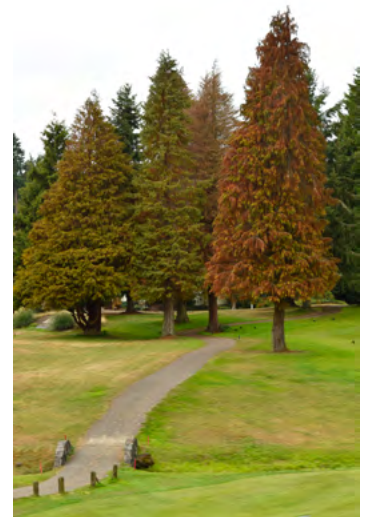
In the Evergreen State, one expects our conifers to be ever green, but on our golf course and elsewhere around town you can't help but notice cedars fully engulfed in hues of russet, brown, and gray. We aren't unique: from British Columbia throughout western Washington into Oregon, cedars young and old, are in decline. What's going on?

Cedars are shade-loving trees that need company. They grow in forests only after other trees there have reached maturity. Their shallow roots and root hairs need shady, cool soil and plentiful rain that falls throughout the seasons. Our area is in a sustained drought. However, it's not only a decrease in annual rainfall that is a problem but an increase in intense periods of hot, dry weather with warmer nights which have wounded these Pacific Northwest icons.

After a few summers of drought, a cedar's finer roots are lost and the tree's ability to take up moisture is impacted. This inability is exacerbated where there is shallow, well-drained soil which dries and heats quickly, such as the "well drained ... gravelly soils" which, per the county, underlie much of Port Ludlow. When soils are dry, more water evaporates out of a tree's leaves than it can take up from its roots, causing the tree's plumbing system to fill with air bubbles that stop moisture from flowing upward, in which case the tree dies from the top down.

Evergreens have defenses against drought; one is their ability to close their needles' tiny pores to prevent evaporation. Yet this, in turn, starves the tree of the carbon dioxide it needs to photosynthesize sunlight into food. Additionally, when nights remain warm cedars are unable to stop their "respiration process," the act of exhaling. During warm nights cedars are in a continuous state of exhale unable to take in the carbon dioxide they so desperately need.

In the end, experts across the Pacific Northwest agree, the Western Red Cedar has been unable to adapt to climate change. Flooded with sunlight and heat, famished from a lack of water and carbon dioxide, cedars are starving to death. As this drought persists and this state of decline continues they will become ever more vulnerable to pests and disease, ever more of them will die, and our state will be ever less "evergreen."



*Cedars in distress on the golf course.*

Submitted photo

**TIME TO ORDER YOUR  
UNIQUELY HANDMADE  
WREATH! EACH WREATH  
IS LOVINGLY CREATED  
WITH LOCALLY GROWN  
FLOWERS FROM OUR  
PORT TOWNSEND FARM.**

SWEETSEEDFLOWERS.COM  
SWEETSEEDFLOWERFARM@GMAIL.COM  
360-358-2202



## Sterling's CBD Store

**The Finest In CBD Products**

**Some Experts Are Saying **CBD****

**Is The Incredible New All Natural  
Substance For Our Body.**

**Hemp-Derived - THC Free**

CBD is not Pot or Medical Marijuana...

It will not get you high

**Free Delivery**

**In The Port Ludlow Area**

<http://SterlingsCBD.com>

**7446 Oak Bay Road - Port Ludlow - (360) 437-1344**



Heavenly Drops™



# News

*Submit your articles by email to [editor@plvoice.org](mailto:editor@plvoice.org) no later than the 8th of the preceding month.*

## Remember to Vote!

*by Rick Thompson, Chimacum School District Superintendent*

Chimacum School District will have three school board seats open for election on the November 5 ballot. Each of the open seats has a term of four years. The candidates are:

- District 2: Mike Aman and Mickey Nagy
- District 3: Kristina Mayer and Steve Martin
- District 4: Michael Raymond and Tami Robocker

For more information about the election for school board members, please call me at 360-302-5896.



*Port Ludlow's Brewfest by the Bay event supports Backpacks for Kids in the Chimacum school district..*

Submitted photo

You still have time to register to vote. Washington State implemented Same Day Voter Registration beginning with the 2019 August primary election. For information on voting in Washington state, call the election office at 360-385-9117 or visit [sos.wa.gov/elections/register.aspx](https://sos.wa.gov/elections/register.aspx).

In addition, we're grateful for the support of the community in the recent Backpacks for Kids fundraiser. Thank you, everyone!

## Jefferson Healthcare News

Jefferson Healthcare is pleased to welcome Dr. Joseph Meyerson, a board eligible plastic and reconstructive surgeon specializing in hand and wrist surgery, to the Orthopedic Clinic at 834 Sheridan Street, Port Townsend.

Additionally, Dr. Meyerson will work closely with the Oncology and Wound Clinic to provide plastic and reconstructive services for patients with acute and chronic wound issues, skin, cancer or breast cancer reconstruction. Dr. Meyerson chose Jefferson County to begin his practice to make a difference in a rural community. He is excited to have the opportunity to make a lasting impact in a small community and enhance the growing network of medical professionals at Jefferson Healthcare.

## Drop-In Flu Shot Clinic

Jefferson Healthcare Sheridan Primary Care Clinic, 915 Sheridan Street, Port Townsend, is now offering flu vaccinations, without an appointment, for Jefferson County residents six months and older. The drop-in clinic is open Monday through Friday from 10 a.m. to 3:00 p.m. Appointments are also available, by contacting 360-379-8031.

## Great ShakeOut

On October 17, Jefferson Healthcare joined hundreds of thousands of Washingtonians in the Great Washington ShakeOut, the state's largest earthquake drill. This event gave us the opportunity to practice our earthquake protocols in a mock situation. Following the drill, the emergency department held a training exercise to triage a larger than normal intake of patients, reinforce skills, and find opportunities for improvement. The goal is to prevent a major earthquake from becoming a catastrophe for individuals, organizations, and our community.

## Support Groups

Jefferson Healthcare sponsors a variety of support groups for patients and the community. See below for a sampling, with contact information.

- CPAP, BiPAP and ASV Users: First Thursday of the month, 11:00 a.m. to 12:00 p.m., Puget Room at Jefferson Healthcare. Contact Sleep Medicine, 260-379-2249.
- Diabetes Support: Third Tuesday of the month, 12:00 to 1:30 p.m., Avemere, 1201 Hancock Road, Port Townsend. Call 360-385-2200 ext. 1240.
- Parkinson's Support: Fourth Thursday of the month, 3:00 to 4:30 p.m., Dirksen Room at Jefferson Healthcare. Call 360-385-2200 ext. 2042.
- Better Breather's Support: Third Monday of the month, 2:00 to 3:00 p.m., Jefferson Healthcare Pulmonary Rehab Office. Call 360-385-2200 ext. 1220.
- Grief Support: First and third Wednesdays of the month, 6:00 to 7:30 p.m., Jefferson Healthcare Home Health Conference Room. Call 360-385-2200 ext. 4615.
- Breast Cancer Support: Tuesdays, 5:15 to 7:00 p.m., Jefferson Healthcare Oncology Reception, 3rd Floor. Call 360-385-2200 ext. 2040.
- Advanced Cancer Support: First Thursday of the month, 12:30 to 2:00 p.m., Jefferson Healthcare Garden Row Café. Call 360-385-2200 ext. 2040.
- Cancer Caregivers Support: First Thursday of the month, 2:00 to 3:30 p.m., Garden Row Café, Jefferson Healthcare. Call 360-385-2200 ext. 2040.



## County Shares Health Assessment Outcomes

Jefferson County Public Health's Community Health Improvement Plan (CHIP) program will host Community Conversation meetings in three locations this fall. At the meetings, the CHIP team will share data gathered in the comprehensive health assessment conducted over the summer.

The assessment was conducted to understand current health needs of county residents and to identify where and how health can be improved. Data collected will help to determine Jefferson County health priorities for the next four to five years. It will become the basis for the next CHIP, which is set for completion in 2020.

"It is invaluable to have the data to help us plan for how to best serve our community," said Lori Fleming, co-executive director for CHIP. "We are grateful for the contributions from Jefferson County, Jefferson Healthcare, and the City of Port Townsend that allowed us to complete this assessment."

All county residents are invited to attend any of the meetings:

- **Wednesday, November 20**, 1:00 to 2:30 p.m., Cotton Building, 607 Water Street, Port Townsend.
- **Thursday, November 21**, 6:00 to 7:30 p.m., Jefferson County Library, 620 Cedar Avenue, Port Hadlock.
- **Wednesday, December 4**, 5:30 to 7:00 p.m., Quilcene Community Center, 294952 U.S. Highway 101, Quilcene.

For more information, contact Bernadette Smyth at Public Health, 360-379-4478 or [bsmyth@co.jefferson.wa.us](mailto:bsmyth@co.jefferson.wa.us).

## Exciting Year Ahead for AAUW Community

American Association of University Women/University Women's Foundation (AAUW/UWF) have kicked off their 2019/2020 year, announcing ambitious community events attuned to today's life and times.

The October 2019 presentation highlighted the 11 young women who were chosen from East Jefferson County to attend the summer Science, Technology, Engineering, Math (STEM) camp. This program has grown over the past years to include hundreds of young women from all corners of Washington state. Now, graduates are starting college or professional careers and sharing their experience with the new campers and all the adults who gave to the UWF scholarship fund to pay the tuition. For more information, visit [pt-wa.aauw.net/university-womens-foundation-uwf/tech-trek/](http://pt-wa.aauw.net/university-womens-foundation-uwf/tech-trek/).

During November, nominees from Jefferson County for the Women of Excellence Award will be reviewed and the winner will be announced in December.

Starting in January, community events are planned for several months to celebrate the 1920 passing of the 19th Amendment, giving women the right to vote. As the 2020 centennial of this momentous

amendment approaches, organizations across Washington are planning commemorations, celebrations, and events.

AAUW/UWF has been awarded a Votes for Women Centennial grant to fund "Women Vote! 1920 - 2020." Such grants are provided by the Washington State Women's Commission and the Washington State Historical Society. The kickoff will be **Saturday, January 18**, and will extend through May. A specific calendar of events will be available on the website, [pt-wa.aauw.net](http://pt-wa.aauw.net).

Washington state was ahead of the nation with suffrage. Most women in Washington won the vote in 1883; although repealed in 1888, it was passed again in 1910. Washington was the fifth state to grant women the vote.

Teaming up with Port Townsend Film Festival, Key City Theatre, Jefferson Historical Society, and Jefferson County Library, AAUW/UWF will host live presentations, movie viewings, and plays, primarily at one of the libraries. "We are pleased to partner with so many agencies in the community to offer a variety of informative presentations that will reach out to all ages," said Dale Spears, co-vice-president of programs.

Along with these special events, the AAUW/UWF is planning its major fundraising event—the Home and Kitchen Tour—in April 2020. All funds will go to support educational projects in the school systems, and to scholarships for high schools and higher education.

For information about Votes for Women Centennial events across Washington, visit [suffrage100wa.com](http://suffrage100wa.com), and follow Facebook, Twitter, and Instagram [@suffrage100wa](https://www.instagram.com/suffrage100wa).

## Dove House Invites Holiday Sponsors

Each holiday Season, Dove House Advocacy Services aims to provide our clients with a wonderful holiday experience, despite whatever trauma they have endured. Our annual Holiday Sponsorship Program is one of the valued ways that we partner with our community.

When our community expresses caring through sponsoring a family, our clients are inspired to regain a sense of hope and trust – essential ingredients for healthy, stable and meaningful lives. Together we can help create positive holiday memories for our clients and their families. We greatly appreciate all of the sponsors from the past several years who have brought warmth, joy, and new experiences to so many people. Whether you sponsor an individual, a child, or a family, it is an important contribution.

If you are interested in supporting this effort in any way, please give us a call at 360-385-5292.

### Reminder to Dog Owners

So we all can enjoy our walks, please carry a plastic bag and clean up after your dog.



## The 29th Annual Holiday Arts and Crafts Fair



Two Foals.

Submitted photo

Port Townsend Community Center will be the site for a juried arts and crafts fair on **Friday, November 29**, and **Saturday, November 30**. Fine quality handmade craftwork from Northwest artists will be on display. The hours of the fair are 10:00 a.m. to 5:00 p.m. on both days. The Center is located at 620 Tyler Street, uptown, Port Townsend. In addition to the artwork, local student musicians will be performing in the gym.

This fine, quality show is staged by the Port Townsend Arts Guild, a self-supporting nonprofit arts guild for over 48 years, offering arts scholarships to Jefferson County students majoring in the arts. Artists will donate a portion of each sale to the Jefferson County Food Bank, as they have done for the past 27 years. In 2017, \$3,600 was raised for the local food bank. Favorite Jefferson County artists as well as artists from Sequim, Port Angeles, Tacoma, Seattle, Arlington, Shelton, and Portland, Oregon, will be on display.

There will be handwoven rugs and clothing, gold and silver jewelry set with semi-precious gems, leather belts, purses, photography, sculptural jewelry, turned bowls, Damascus steel kitchen and hunting knives, turned pens, felted animals, stoneware, porcelain and earthenware pottery, enameled art jewelry, a variety of woodwork including carvings, boxes, and cutting boards, painted silk scarves, nuno felted scarves, capes and clothing, handknit items from alpaca wool, fleece clothing, baskets made from seaweed, 4H kitty toys, sweaters, watercolors, lampworked beads and paperweights, vintage style aprons, childrens clothing, handbound leather journals, pine needle baskets, mosaic and fused glass sculptures, painted floorcloths, oil paintings, David Michael's harp music and CDs, and more in a wide range of prices.

Information about the Port Townsend Arts Guild fairs, scholarships, and artists may be found on the guild website at [porttownsendartsguild.org](http://porttownsendartsguild.org) or by calling 360-774-6544.

## Upcoming Library Events

Join local author Nicole J. Persun at the Jefferson County Library on **Thursday, November 14**, from 6:30 to 8:00 p.m. for a night of books, desserts, and discussion. She will read from her debut women's fiction novel, *The Ingredients of Us*, written under the pen name, Jennifer Gold, and will answer questions about the story's themes of love, past mistakes, redemption, and the stuff in between. Desserts will be provided.

A proud Pacific Northwest native, Nicole J. Persun is an author, writing coach, and horse caretaker. She has a passion for writing about the relationships of career-focused women—the victories, the struggles, and everything in between. Nicole has a master's degree in creative writing and is a board member for the Pacific Northwest Writers Association. When she's not writing, Nicole can be found spending time with her husband, her horse, and two cats.



Native American flutist Peter Ali.

Submitted photo

Native American flutist Peter Ali will combine his original songs with stories about his heritage at the Jefferson County Library on **Wednesday, November 20**, from 6:00 to 7:30 p.m.

Peter Ali is a self-taught flutist who creates his music from a collection of wooden flutes, each with a wonderful voice that he directs and brings to life. He comes from a unique blending of cultures. His mother is of Mexican, Mayan, Pima Indian, and southern European descent, and his father is of North African descent. He blends these cultures into his music, which he hopes will inspire healing and a better understanding of how everyone is connected. Peter was a featured performer for the Dalai Lama during the Seeds of Compassion event in Seattle.

After the presentation, there will be a 30-minute class for anyone in the audience (4th grade age and above) who would like to have the opportunity to play the Native American flute. Cedar flutes will be provided.

For more information, please call 360-385-6544, or go to the library website event calendar at [jclibrary.librarymarket.com/](http://jclibrary.librarymarket.com/).



## Port Ludlow Fire & Rescue

### Alarm Statistics September 2019

#### Alarms

Fires	3
Rescue/Emergency Medical	70
Service Call	11
Good Intent	18
False Alarm	4
<b>Total Alarms</b>	<b>107</b>

#### Ambulance Transports

Jefferson Healthcare	13
Harrison Medical Center, Bremerton	10
Airlift Northwest	3
<b>Total Transports</b>	<b>26</b>

#### Aid

Aid Given	20
Aid Received	6

## Be Prepared When Calling 911

Port Ludlow Fire District provides a variety of services that include fire suppression and prevention, responding to emergency medical needs, and transporting patients to hospitals. In addition, they help residents with other needs including installing smoke alarms or changing batteries in existing alarms, fire-extinguisher training, and public-education opportunities.

To assist both fire and law-enforcement responders in quickly getting to a location, there are some things community members can do. Every building, whether a residence or business, should have an address sign placed at the entrance of the property. The signs are red with white reflective numbers and can be obtained from the Department of Community Development (DCD), located at 621 Sheridan Street in Port Townsend. According to the DCD website, the department maintains a master address database that is shared with the county's 911 Dispatch Center and allows operators to pull up maps to provide responders with specific directions to the caller's address.

When you call 911, the dispatcher will ask the nature of your emergency, the location of the emergency, your phone number, the number of people affected by the emergency, and their conditions. Listen carefully to the questions being asked so the appropriate response team can be deployed to your location. The information you provide will allow the dispatcher to relay a short message to the responders. Based on their experience, both fire and law-enforcement responders will know what additional resources they might need when responding to help you.

## The Choral Belles

From Silverdale to Sequim, the Choral Belles entertain at numerous special events, as well as at retirement, assisted living, and nursing home facilities. Whether spiritual, seasonal, or just plain "sassy," they provide the right touch of entertainment. They were founded in 1996 by Annette Koch, Lee Barnes, and Bonnie Van Allsberg to give female singers an opportunity to experience the joy of singing with a group. They are directed by Mary Lou Montgomery, a retired choral music teacher from Chimacum schools, a saxophonist, and vocalist. Piano accompaniment is provided by Diane Thompson.

The Belles would love to have new members. For information on joining, contact Judi Smith at 360-437-7660 or Mary Lou Montgomery at 360-385-2821. For information on bookings, contact Sandy Fry at 360-385-2821. Rehearsals are Thursdays from 6:00 - 8:00 p.m., with a month-long break in January and July.

The Choral Belles will be performing at the Port Gamble General Store on **Saturday, November 9**, at 11:00 a.m., when the store and the town will be festooned with all of the trimmings for the holiday season. Don't miss this event!

## Upcoming Presentations From Edward Jones Investments

On **Saturday, November 16**, at 11:00 a.m., Rick Jones, with Edward Jones Investments, will present "Health Care and Your Retirement." What role will Medicare play during your retirement? The increasing cost of health care is a growing concern for current and future retirees. In fact, five years ago retirees spent almost twice as much on food as on health care; now the amounts are nearly equal. We'll discuss Medicare coverage and traditional medical expenses, long-term medical care expenses, as well as strategies for addressing uncovered expenses. This event will be held in the Gallery Room of the Beach Club in Port Ludlow.

On **Tuesday, November 19**, at noon, Jones will present "You Have the Power to Outsmart the Scammers." Incidents of fraud are on the rise, and scammers' tactics are becoming more complex. That's why it's important to educate yourself about fraud. We'll share how to spot red flags that might indicate a fraudulent encounter, resources you can turn to if you are targeted, as well as steps you can take now to help protect yourself and your loved ones. This event will be held in the Bayview Room at the Beach Club in Port Ludlow.

Coffee and light snacks will be provided at each event. We hope you and a guest will join us. Please RSVP to Audrey Delmore at 360-437-5113 or [audrey.delmore@edwardjones.com](mailto:audrey.delmore@edwardjones.com) by November 13.



## Social Opportunities at the Yacht Club

by Lori Longo, PLYC Communications Officer



Don and Anne Whipple enjoying the Seahawks game with friends at the PLYC.

Photo by Billie Land

As autumn greets us with cooler weather, Port Ludlow Yacht Club (PLYC) members enjoy getting together for meals on Wednesday and Saturday evenings at the club. New this fall, individuals may host members and their guests to watch sporting events in the Wreck Room. Beer and

wine are available for purchase, and participants bring snacks. Sunday, September 29, was the first Seahawks event. Thirty members attended and had a fabulous time. It's always fun to watch a game with friends.

Fall cruises are lined up with destinations closer to home than we venture to in the summer. October's cruise is to Edmonds and Langley, and the annual December cruise is to Bell Harbor, a club favorite.

PLYC has welcomed 20 new members this year. Many have jumped right in, attending events, participating in cruises, and volunteering at the Wreck Room. Word on the street is we are a friendly group! Please consider joining us, and your first meal will be free with one of the flag officers as your host for the night.

Please contact Lori Longo, PLYC Communications Officer, at [commofficer@plyc.us](mailto:commofficer@plyc.us) to make arrangements.

## Unearth Your Family History Using Land Records

Land records locate your ancestors in a specific time and place, which makes them an amazing genealogy research tool. They can deepen your understanding of how your ancestors lived and even help you solve stubborn genealogical puzzles.

On **Saturday, November 16**, from 9:30 a.m. to 11:30 a.m., speaker Janet Camarata will provide an overview of land survey systems in the United States, including basic terminology, understanding property descriptions, and strategies for successful research. Camarata discovers and tells her family's stories using genealogy research, history, the internet, and the latest computing tools. She is a member of the Association of Professional Genealogists and is a popular presenter at genealogy societies, libraries, museums, and conferences across Washington.

This event will be held at the Tri-Area Community Center, 10 West Valley Road, Chimacum. It is free and open to the public. For further information, contact Linda Broatch at [ljbroatch@sbcglobal.net](mailto:ljbroatch@sbcglobal.net) or 360-774-3767.

## Port Ludlow Business Expo

Did you know there was amazing free food, drink, raffle prizes and goodies, and a gathering of passionate, local businesses from the peninsula in the Port Ludlow Village Center on Wednesday, September 25? If you did not, and are curious, we welcome your interest in the Port Ludlow Business Expo. If you came, thank you for supporting our local businesses and for adding to the grand time that was had.

As with many long-running events, the Port Ludlow Business Expo has not always had its current form. This expo has been occurring, in one form or another, since the days when each of our communities had their own small chambers of commerce. Its beginnings, over a decade ago, were as a business networking event for local companies. One of the needs at the time, which is still true now, was for smaller businesses, south county businesses, and those businesses in outlying areas to gain greater name recognition and have support. However, it was quickly realized that the public needed to be involved as well. The expo evolved into a community event of and for the public and local businesses. As Dana Petrick, past director of the Jefferson County Chamber of Commerce and realtor for Coldwell Banker Best Homes, shared, "You went for the wine, the music, and to meet a huge number of fantastic people. The expo is meant as a bridge between areas, between businesses, and between businesses and the public; the chamber of commerce strives to support all involved."

The expo still endeavors, above all else, to connect communities and continue to be that bridge; this is perhaps its greatest strength. Chamber director Arlene Alen believes the Chamber of Jefferson County is the perfect vehicle to connect businesses, large and small, as well as our communities, residents, and visitors. "We are the county chamber," Alen stated. "We work diligently to support all our communities with our programs and services. We are delighted to be able to produce the Port Ludlow Business Expo again and share the enthusiasm of our businesses and residents for this amazing South County location."

Cammy Brown of Peninsula Legal Services and a member of the Jefferson County Chamber of Commerce spoke to the importance of making sure the public and businesses that support the wider peninsula knew they were invited and wanted, even if they could not attend. In Cammy's words, the expo is "a unifying event for communities from Port Angeles to Brinnon and beyond." Cammy added with enthusiasm, "I had a lot of fun and would definitely do it again. I'll be bringing Peninsula Legal Services back next year."

We hope to see you meeting and greeting with the community and having fun at the expo next year.



Cammy Brown.

Submitted photo



## Helping Hands to Anchorage, Alaska

by Dale Kelley, Guest Writer



Mission work in Alaska.

Submitted photo

in repairing some damage their church sustained from their last earthquake in November 2018.

On the weekend that began our Monday to Friday work week, we toured some of the amazing sights of the area with a Tram ride into the Seven Glaciers area at the Alyeska Ski Resort and the Wild Animal Sanctuary at Portage, 40 miles south of Anchorage, as we enjoyed spectacular scenery and weather, which gratefully lasted all week.

Our work consisted of replacing six major posts and the roof that was holding up an extended breezeway entry into the church, plus repairs in hallways, classrooms, and doorways that needed spackling and repainting.

Our group consisted of four Port Ludlow helpers: John Sweet, Betty Prentice, Dale Kelley, and Joan Flowers; plus three Port Townsend folks: Pastor Scott Rosekrans, and Don and Judy Olsen. The guys worked alongside several Alaskan church members replacing the breezeway posts and new roof, while the gals did the inside repairing and painting, fixing three meals a day for “all hands on deck.”

Midweek, the Anchorage church folks treated us to an over-the-top sumptuous Alaskan BBQ of Moose, Caribou, Reindeer, Salmon, and Halibut. All was amazingly delicious, topped off with scrumptious homemade wild blueberry and native low-bush cranberry pies and other goodies.

All in all, it was a wonderful and rewarding week of a job well done, with new friendships created and celebrated by all.

## Turkey Trot 5K and One-Mile Kids' Fun Run

The annual turkey trot to benefit Jumping Mouse Children's Center, will be held on **Saturday, November 23**. This family-friendly event invites the community to run or walk to benefit Jumping Mouse kids. The one-mile kids' fun run is for children nine and under and begins at 9:00 a.m.; the 5K begins at 9:30 a.m., on a 5K-certified course. Both races start at the Larry Scott trailhead on the western edge of the Port Townsend Boat Haven.

In mid-August seven hearty senior citizens from Port Hadlock's Community United Methodist Church (four from Port Ludlow) packed their gear and headed to Anchorage, Alaska, to work with Turnagain United Methodist Church

Cocoa, coffee, and treats will be available at the finish, with prizes for the top three finishers.

Proceeds go to Jumping Mouse Children's Center, providing mental health therapy for children in Jefferson County. This is a great event for the whole family, with special student, family, and senior rates (5K, \$30; kids' dash, \$10). Register for the event at [raceentry.com/races/jumping-mouse-5k-turkey-trot-and-kids-fun-run/2019/register](http://raceentry.com/races/jumping-mouse-5k-turkey-trot-and-kids-fun-run/2019/register). The race is an approved LiveWell Fit event with Sound Health, so eligible participants and their covered family members can be reimbursed for the registration fees.

## Deep Sea Day at Naval Undersea Museum

Explore exhibits and artifacts with Navy submarine, torpedo, and undersea experts in the galleries of the United States Naval Undersea Museum on **Saturday, November 2**, from 10:00 a.m. to 3:00 p.m. The museum is located at 1 Garnett Way in Keyport. All events are free and open to the public.

Try out the robotics and virtual reality challenges. Tour NR-1's control room equipment with a former NR-1 assistant officer-in-charge; the tour requires a free reserved ticket. Visit the museum's website, [navalunderseamuseum.org/events-calendar/](http://navalunderseamuseum.org/events-calendar/), for more information and to reserve your spot on an NR-1 tour.

## Meet Stained Glass Artist Pat Chase

by Bev Rothenborg, Arts and Entertainment Editor



Angel Companions by Pat Chase.

Photo by Jay Syverson

“Angels are messengers, our guides, and helpers in all times, especially when needed,” Pat Chase.

Local stained glass artist and member of the Port Ludlow Art League, Pat Chase has been creating exquisite angels for 20 years. She currently

works out of her home studio in Port Hadlock where she teaches one-on-one, works on commissions, and creates more angels. For the holidays, she also makes charming stained glass snowflakes.

The world-wide magazine *Glass Patterns Quarterly* featured one of her angels in a 2003 issue. As a result of this recognition, her pattern book *Angel Companions* was published in 2007. Recently, *Angel Companions II* was published with 23 patterns suitable for making angels. Each book has different patterns which can also be used for quilt-making. The book contains easy-to-follow basic instructions, and they are available by contacting Pat.

During the holidays, Pat hangs her angels throughout Community United Methodist Church in Port Hadlock, where they sparkle in the light and enhance the joy of the season. I purchased a beautiful Madonna as a gift on the birth of my first grandchild, and it hung over the baby’s crib for an “Angel Blessing.” Several of my friends have received the Snowflakes as gifts.

Pat and her husband Stephen attend all of the local Bluegrass Festivals they can fit in, but when she’s not traveling she may be reached at 360-385-3457 or at [ponygal67@gmail.com](mailto:ponygal67@gmail.com). Her website is [AngelGlassArt.com](http://AngelGlassArt.com).

## United Good Neighbors’ Campaign

Each year, United Good Neighbors (UGN) raises funds to support organizations in Jefferson County that provide for the basic needs of those who need it most in our community with resources like food, shelter, education, and medical care.

- 1/5 of Jefferson County families live below the poverty line.
- 55 percent of students across our school districts qualify for the free or reduced cost lunch program.
- In 2017, Jefferson County Commissioners declared a state of emergency in affordable housing.

Join United Good Neighbors at their Nonprofit Fair on **Saturday, November 2**, from 10:00 a.m. to 2:00 p.m., 620 Tyler Street, Port Townsend.

The 2019 UGN Give Jefferson Campaign will run from November 1 to December 31. Your donations will support

the valuable work done by the following organizations to ensure everyone in our community has basic human needs:

4-H Youth Development  
Backpacks for Kids Port Townsend  
Bayside Housing and Services  
Camp Beausite  
Chimacum Backpacks for Kids  
Clallam Jefferson Pro Bono Law  
Community Boat Project  
Community Wellness Project  
Concerned Citizens Birth to Adult  
Dove House Shelter & Services  
Foster Supports of Jefferson County  
ECHHO Senior Services  
Habitat for Humanity of East Jefferson County  
JC Mash  
Jefferson County Shelter (COAST)  
Jefferson County Immigrant Rights Advocates (JCIRA)  
Jefferson Healthcare  
Jefferson County Farmers Markets  
Jefferson Teen Center  
New Image (formerly Working Image)  
Olympic Neighbors  
OlyCAP  
Public Hygiene Lets Us Stay Human  
Port Townsend School District  
Special Olympics Washington  
St. Vincent de Paul  
The Benji Project  
YMCA

To learn more about United Good Neighbors and make a donation, visit [givejefferson.org](http://givejefferson.org).

## Restaurant Grand Opening

Check out Port Ludlow’s new restaurant and join owners Carlos and Julia Soto for a ribbon-cutting ceremony at their Mexican grill, El Molcajete. The event will be **Thursday, November 14**, at 3:30 p.m. The restaurant is located at 76 Village Way in Port Ludlow. Tasting samples will be offered. Bring your appetite and join the fun.

### Senior Care Management

Stay Warm. Stay Safe. Stay Home.



- ★ Personalized Assistance from Licensed and Skilled Home Care Aides Include:
  - bathing, dressing, medication reminders & medical team liaison, nutritious & delicious meal preparation, errands, transportation, recreational & community outings, companionship.
- ★ Home Safety and Fall Prevention
- ★ Emergency Preparedness
- ★ Hospice and End-of-Life Care

**Peninsula Homecare Cooperative**  
[thrive@phc.coop](mailto:thrive@phc.coop) 360-385-9664 [www.phc.coop](http://www.phc.coop)



# Community Meetings

## Port Ludlow Garden Club Goes Holiday Shopping

Kick off the upcoming season with fun and friends in comfort and style aboard a luxurious chartered bus headed for our favorite destination, Molbak's. Mark your calendars for **Tuesday, November 12**, and reserve your seat for this fun-filled day by November 1.

Arrive at 7:30 a.m. at the Bay Club for check-in and then board the "Holiday Express" for departure. We will arrive at Molbak's Garden at approximately 10:00 a.m. where the fun begins, and we shop 'til we drop. Molbak's will have a morning workshop/demonstration on holiday decorating in the Event Center at 10:30 a.m. Shopping and lunch (on your own) will begin at 11:30 a.m. We board the bus and start for home at 2:00 p.m.

Please RSVP by **Friday, November 1**, via email to [franbodman11@gmail.com](mailto:franbodman11@gmail.com). Drop off your check at the Bay Club to confirm your reservation, or mail it to Port Ludlow Garden Club, Post Office Box 65235, Port Ludlow, WA 98365. Make your check payable to Port Ludlow Garden Club. Your reservation is not confirmed until we receive payment.

The fee includes private bus transportation, ferry ticket, snacks on the bus, holiday decorating workshop/demonstration, all tax and gratuities: \$55 for Garden Club members and \$60 for non-members.

If you have any questions, please contact Frances Rawski, 360-302-6154. We look forward to seeing you at the Bay Club.

## First Wednesday Luncheon

November's luncheon will be held on **November 6** at 11:00 a.m., at the Beach Club, 121 Marine View Drive, Port Ludlow. Our featured guest will be historian and author Nancy McDaniels, who will be sharing "Letters From the Front" correspondence from WWI and WWII, along with "Musings from a Modern Era Veteran."

All North Bay, South Bay, and Port Ludlow residents are encouraged to attend. Sign up at the Bay or Beach Club before the end of the month. After that, contact Marilyn Durand at 360-437-7667 to cancel or to make a late reservation. There is no admission fee. Guests are asked to donate non-perishable foods, personal toiletries, household products, pet foods, and diapers. Monetary donations to the Tri-Area Food Bank are also gratefully accepted.

Please remember to bring your complete table setting including placemats, dishes, glasses, utensils, and napkins. The savings on those items allows additional support to the food bank.

## Dine and Discover, December 2

In an area one-fifth the size of Jefferson County, the megalopolis of Hong Kong rises atop solid bedrock on the southeast coast of mainland China. Its strategic location and complex history help to explain why it rapidly evolved into a hub of world finance and commerce. However, the startling skyscrapers, streets teeming with Rolls Royce limos and lined with McDonald's restaurants, are in stark contrast to the *feng shui* that informs Hong Kong's architecture and the incense that infuses its waters. This conflux of culture, history, commerce, and changing values creates a fabulous background for December's Dine and Discover program.



Hong Kong  
"Fragrant Harbor"

Port Ludlow resident Billy Fong was educated at St. Paul's College in Hong Kong prior to attending Northrop Institute of Technology in Los Angeles. He provides a rare, personal glimpse into the history and culture of his birthplace. Please sign up to bring an entrée, salad, dessert, or appetizer for 8 - 10 people. The sign-up sheets will be available beginning **Friday, November 1**, at the Bay Club. Bring your individual place settings, beverages, a bag for dirty dishes, and \$3/person. Doors open at 5:00 p.m.; appetizers are served at 5:30. If you bring an appetizer, be sure to have it there by that time.

This event, as with all Dine and Discover programs, is for the entire community. So, mark your calendars and join us on **Monday, December 2**. Contact Doris or Milt Lum at 360-437-5143 with any questions.

## Stamping and Paper Arts

Join us for our annual field trip.

On **Wednesday, November 13**, the Stamping and Paper Arts Club will be taking its annual field trip. This year we'll be heading to Impress Cards and Crafts in Tukwila. There will be a large, impressive selection of stamps, dies, paper, embellishments, and inks—you get the idea! Since the closing of The Paper Cafe in Bellingham, Impress is one of the best locations for dies, stamps, inks, et cetera, in our area.

After our shopping expedition, we'll have lunch before heading back to Port Ludlow. If you're interested in joining us, please send an email to Chris Spagle [chspag12@gmail.com](mailto:chspag12@gmail.com) by **Thursday, November 7**.

## DigitalLife Workshops in November

All workshops are held in the South Bay Club classroom and are open to the public. You are encouraged to visit our learning and problem-solving workshops.

### Photo Editing Group – Monday, November 11, 10:00 a.m.

Learn how to employ software to improve your photos, create slideshows, print those good shots, and scan your old photos. Get answers to your questions and on-the-spot help. Join us every second Monday.

### All Things Apple Group – Monday, November 18, 6:00 p.m.

Get answers to your questions and help with all Apple devices. See presentations and get application support. Learn from individual help breakouts. Meetings are held every third Monday.

### Digital Camera Group – Monday, November 25, 9:30 a.m.

We talk composition, lighting, using your camera's features, and shooting tips. All skill levels are welcome. Always bring your camera and instruction manual with you. This group meets every fourth Monday.

## Martha's Book Club

Join us at 6:30 p.m. on **Tuesday, November 12**, at the Bay Club to discuss *There There* by Tommy Orange, a story of twelve unforgettable characters, all wrestling with the effects of their heritage on their daily experiences as they converge and collide one fateful day.

Tommy Orange's wondrous and shattering debut novel follows the characters from Native American communities all traveling to the Big Oakland Powwow, connected to one another in ways they may not yet realize. Among them is Jacquie Red Feather, newly sober and trying to make it back to the family she left behind. Dene Oxendene is pulling his life together after his uncle's death and working at the powwow to honor his memory. Fourteen-year-old Orvil is coming to perform traditional dance for the very first time. Together, this chorus of voices tells of the plight of the urban Native American grappling with a complex and painful history, with an inheritance of beauty and spirituality, with communion and sacrifice and heroism. Hailed as an instant classic, *There There* is at once poignant and unflinching, utterly contemporary and truly unforgettable.

Everyone is welcome.

## Port Ludlow Bookworms

Port Ludlow Bookworms will meet on **Monday, November 18**, at 7:00 p.m. in the Bridge Deck to discuss Nina George's *The Little Paris Bookshop*.

"From his floating bookstore in a barge on the Seine, Monsieur Perdu recommends novels for the hardships of life. Using his intuitive feel for the exact book a reader needs, he tries to mend broken hearts and souls. The only person he can't seem to heal through literature is himself; he's still haunted by heartbreak

since the disappearance of his great love. She left him with only a letter, which he has never opened. After Perdu is finally tempted to read the letter, he departs on a mission to the south of France, hoping to make peace with his loss and discover the end of the story. He travels along the country's rivers, dispensing his wisdom and his books, showing the healing powers of the literary world." (Goodreads)

The December 16 meeting will feature a discussion of *The Last Painting of Sara de Vos* by Dominic Smith. For more information, text Leslie Carlson at 360-643-0291 or email her at [lcarlson554@gmail.com](mailto:lcarlson554@gmail.com).

## Ludlow Senior Singles

The date for the next Ludlow Senior Singles luncheon is **Tuesday, November 19**, 12:30 p.m. We will be going to the Fujiyama Japanese Steak House, 9989 Silverdale Way NW, Suite 109, Silverdale.

The Fujiyama is always a delightfully fun luncheon spot, and the food is great. Carpooling is recommended, as parking, especially at lunch time, can be tight. If you would like to add your name to the "I'm going" list, give Diane a call at 206-910-0639 before November 19. Newcomers are always welcome. The Ludlow Singles is a fun group, and we encourage you to join us.



Contact Sandy White at  
[sandyj.white@yahoo.com](mailto:sandyj.white@yahoo.com)  
**379-5248**  
 or **301-5151**

## LULU's B & B For Dogs

*Exclusive resort for small dogs*

Good food, fun walks and great company in warm loving home.  
 No kennels or cages! Only 2-3 guests at a time.  
 Licensed, insured and bonded.  
 Reasonable rates, tours and references upon request.  
 Visit our website at [www.lulusfordogs.com](http://www.lulusfordogs.com)

**VOLVO • BMW • AUDI • MERCEDES • MINI • VOLKSWAGEN  
LAND ROVER • JAGUAR • SAAB**



## CIRCLE & SQUARE AUTO CARE

**(360)385-2070 [WWW.CIRCLEANDSQUARE.COM](http://WWW.CIRCLEANDSQUARE.COM)**









# Arts and Entertainment

*This section features news on Port Ludlow arts and entertainment events, as well as a performing arts calendar for Jefferson, Clallam and Kitsap Counties. Submit news and calendar items to [editor@plvoice.org](mailto:editor@plvoice.org) by the 8th of the preceding month.*

## Buzz Brass Quintet Performing Dec. 8

by Peggy Welker, Publicity Chairperson



*The Buzz Brass quintet.*

Submitted photo

If you are going to be home for the holidays this year, Port Ludlow Performing Arts (PLPA) invites you to the Bay Club on **Sunday, December 8**, at 4:00 p.m. to revel in the holiday spirit with the fantastic Buzz Brass quintet, consisting of two trumpets, horn, trombone, and bass trombone. Since 2002, Buzz Brass has been performing all across Canada as well as in the United States, Europe, and China. The ensemble has given over 1,600 performances on three continents, including famous concert halls, reaching more than 275,000 spectators.

For the holidays, Buzz Brass offers a concert embodying all of the season's magic, presented with emotion and humor. This energetic show will include many favorite holiday classics.

The ensemble offers an impressive range of musical styles, from the Renaissance to present day. Its playlist includes classics from the brass-quintet repertoire and, to spice things up, exclusive compositions and arrangements. Buzz Brass prides itself on its ability to create music for audiences of all ages—from the young to the not-so-young. The numerous awards and distinctions that this group has earned over the years attest to both the quality and the relevance of its musical performances. Buzz Brass has collaborated with established symphony orchestras in its latest performances.

This talented group of musicians includes Sylvain Lapointe, group founder; Frédéric Gagnon, trumpets; Pascal Lafrenière, horn; and Jason De Carufel and Sylvain Arseneau, trombones.

If you want to be inspired for the holiday season, get your tickets now. They are \$30 each and can be purchased directly from Brown Paper Tickets or from a link on the PLPA website, [portludlowperformingarts.com](http://portludlowperformingarts.com). If you cannot access the Internet, you may also mail a check directly to the PLPA at P.O. Box 65210, Port Ludlow, WA 98365. Please include your phone number so we can confirm receipt. Bay Club doors will open at 2:45 p.m. for subscribers and benefactors to preselect seats; general admission ticket holders will be welcomed at 3:00 p.m.; the concert will begin at 4:00 p.m.

We would like to extend a big thank you to Sound Bank, Terri Ross, and Beth Weaver, whose generous donations have made this concert possible.

## Ludlow Village Players

Auditions for *The Outsider*, a full-length comedy by Paul Slade Smith, will be held on **Tuesday, November 19**, and **Thursday, November 21**, from 5:00 - 7:45 p.m. at the Bay Club, 120 Spinaker Place in Port Ludlow. Unlike other auditions, **Tuesday, November 19**, is a "must attend" event. You will need to pick up an Audition Packet at the Bay Club prior to that night which will contain a character assignment, an application, and other audition information. **Thursday, November 21**, is a possible callback night when you may read a role from *The Outsider* script.

*The Outsider* has a cast of four males and three females, all adults of various ages. Auditions will be conducted by our new Guest Director Randy Powell who has just concluded a huge success with *The Fantasticks* at the Jewel Box Theater in Poulsbo. Come on down and join us for an evening of a new and fun experience. For more information, contact Randy Powell, [rpowell25@earthlink.net](mailto:rpowell25@earthlink.net), 360-536-0628, or Val Durling, [rkd@olypen.com](mailto:rkd@olypen.com), 360-437-2861.

## RainShadow Chorale's Fall Program

RainShadow Chorale is pleased to announce an exciting collaboration with Jake Runestad for our fall concerts on **Saturday and Sunday, November 16 and 17**, at 4:00 p.m. The concerts will be held at Lutheran Church of the Redeemer, 45 Redeemer Way, Chimacum.

RainShadow Chorale Artistic Director and Conductor, Rebecca Rottsolk, was inspired by a work, *Secret of the Sea*, for chorus, piano, string ensemble, and percussion. The work's composer,

*continued on next page*

*RainShadow* continued from previous page

Jake Runestad, is an award-winning and frequently-performed creator of stirring and uplifting works.

“As a conductor who likes to stay abreast with developments in my field, I have connected many times with Jake over the past several years. RainShadow Chorale has loved singing a number of his works, so it was easy for me to contact him and invite him to come to Port Townsend to work with us and conduct two of his pieces in our concert,” said Rottsolk.

Tickets may be purchased at Crossroads Music, 2100 Lawrence Street, Port Townsend, or at the door (suggested donation: \$20 adults, \$10 students). For further information, go to the website [rainshadowchorale.org](http://rainshadowchorale.org) or telephone 360-379-3458.

## Key City Public Theatre Serves up *Fall Fling*

Twice a year, the nonprofit Key City Public Theatre (KCPT) presents an evening of dinner theater—a night out on the town with live drama and a themed four-course meal at the Alchemy Bistro & Wine Bar in downtown Port Townsend. This season, the show is *Fall Fling*, a set of short, comedic plays by local playwrights. Key City Artistic Associate Brendan Chambers directs this new production.

Tickets are on sale for two performances at 6:00 p.m. **Sunday** and **Monday, November 10 and 11**. The \$58 per person price includes the show, dinner and gratuity; drinks are available for added purchase. For information about the theater and the Alchemy delights, phone KCPT at 360-385-5278 and visit [KeyCityPublicTheatre.org](http://KeyCityPublicTheatre.org).

## Mercy Falls at Key City Public Theatre

The world premiere of *Mercy Falls*, a holiday comedy about an independent single woman, is set to open this month at Key City Public Theatre (KCPT). The play, directed by Denise Winter, introduces us to Marcy Wuggelson, who feels like she’s always been jinxed. Then she visits her favorite self-help writer, Wanda Moore, in the hospital on Christmas Eve. Might this be the night when Marcy — with the help of Wanda, Santa’s reindeer, the Ghost of Christmas Future, and a nun — turns her luck around?

New York playwright and Indie Theater Hall of Fame member Jeni Mahoney dreamed up Marcy’s story and worked on it during KCPT’s PlayFest last year. *Mercy Falls* comes to life at 7:30 p.m. Thursdays through Saturdays, and 2:30 p.m. on Sundays, starting **Friday, November 29**, and running until **Friday, December 27**.

The show’s cast features some of KCPT’s best-known comedic performers: Tomoki Sage, fresh from his run with “Club Sandwich” in Seattle, Michelle Hensel, Consuelo Aduviso, Jenn True, and Maggie Jo Bulkley. “This is comedy with a heart,” said Winter, “and what fun to see this talented cast bring the hilarity to the stage.”

For tickets, see [KeyCityPublicTheatre.org](http://KeyCityPublicTheatre.org) or phone the box office at 360-385-KCPT (5278). The playhouse at 419 Washington Street, Port

Townsend, also opens its box office for walk-up ticket purchase from 1:00 p.m. to 3:00 p.m., Wednesdays through Fridays, and opens its lobby and bar an hour before every performance.

## Port Ludlow Art League’s November Program



*Block print imagery.*

Submitted photo

The Art League is pleased to welcome Erica Applewhite of White Apple Studio to its monthly program meeting in November.

After studying etching, lithography, and silkscreen in college, Erica’s current focus is on block print art. Working with a unique, soft, rubbery block material, Erica is able to create a linoleum-type print without using a printing press.

Erica’s inspiration for her block print imagery comes from many sources, including majestic Pacific Northwest landscapes, ordinary and quirky objects, animals, and even food. Erica states, “I love the humor and simplicity found in such things as a pea pod, a duck’s webbed foot, or a tomato.”

White Apple Studio’s block print art has been featured at the Seattle Art Museum Shop in downtown Seattle, Bainbridge Arts and Crafts, the Bainbridge Island Studio Tour, and the Wayzgoose Kitsap Arts Festival.

The program meeting is scheduled for **Wednesday, November 20**, from 1:00 to 3:00 p.m. at the Port Ludlow Beach Club. The Beach Club is located at 121 Marina View Drive in Port Ludlow. Non-members are welcome to attend the meeting for a nominal fee of \$5. For more information, please contact Art League President Janice Gruber at 360 301-9840 or [JJGruber@cablespeed.com](mailto:JJGruber@cablespeed.com).



## Baubles, Bangles, Beads...



*Autumn Transitions, necklace by Jolie Maki.*

Submitted photo

And all things bright and beautiful! The Port Ludlow Art League's jewelers are spotlighted for November's Artist of the Month show in the Sound Community Bank lobby. The art of adornment dates back thousands of years; these artists have brought that art form into modern times. Seven jewelers will share the limelight on the bank's gallery wall.

Jolie Maki specializes in manipulating metals including sterling silver, copper, bronze, and gold for her jewelry. Using ancient metal-smithing techniques combined with stone setting and wire manipulation, her jewelry reflects natural form and cultural symbolism.

Mary Lynn Laker has worked with fabric, mixed media, photography, paint, metal, glass, and wax, and loves the experimentation of using different mediums. Her jewelry often uses components she designs from precious metal clay (PMC) as focal points in her jewelry.

Ginny Ford experiments with techniques and different materials, including sterling silver, copper, enamels and PMC, and enameling. Her jewelry has an oriental flare which she markets under Heavenly Mountain Studios.

Pamela Raine, best known for her watercolors, mixed media, and ceramics, took the next step of her fascination with color by adding jewelry to her repertoire. She uses an infinite variety of materials to create jewelry in her search for the perfect combination.

Maggie Smith started making beads in the 90s after an interest in lamp work led to classes and an investment in equipment. Her love of color and a quest for new ways to manipulate glass results in unique beads and jewelry.

Linda Henderson enjoys searching for beads, crystals, and gemstones in her travels as well as learning new techniques to incorporate into jewelry. Recent experiments include polymer clay, leather, and macramé.

Mara Mauch specializes in glass, layered and slumped in a kiln, to form one-of-a-kind pieces for her jewelry. She uses combinations of precious glass and other metal elements to make brilliant, colorful, and wearable pieces.

Judy Danberg likes the look and feel of beads with a history; some of her treasures are over 300 years old. She gives those beads and components a central place in her modern jewelry.

The Baubles, Bangles, and Beads artist reception will be on **Wednesday, November 13**, from 4:00 - 5:00 p.m. in the Sound Community Bank Lobby, and from 4:00 - 6:00 p.m. at the Port Ludlow Art League Gallery next door. The bank and gallery are located at the corner of Oak Bay Road and Osprey Ridge Drive in Port Ludlow. For more information, contact League President Janice Gruber at 360-301-9840 or [JJGruber@cablespeed.com](mailto:JJGruber@cablespeed.com).

## Port Ludlow Art League's Jeweler of the Month - Jolie Maki

After a career in graphic design, Jolie Maki acquired a Bachelor of Fine Arts degree in metal arts from the University of Washington. She manipulates metal using metalsmithing techniques, such as forging, chasing/repoussé, stone setting, and wire wrapping. Metal as a medium provides an emphasis on structure that leads to innovative designs. Flat sheets of metal and lengths of wire have infinite possibilities.

Inspired by the falling leaves, Jolie crafted a series of leaf shapes fabricated out of bronze sheet metal, hand sawed, hammered, heated, and then manipulated into wearable pieces of art. She states, "I chose to use the warm colored bronze metal given its similar color tones of leaves. The result is an interesting dichotomy between the ridged permanence of metal and the fragile leaf structures."

Jolie's jewelry designs will be on display at the Port Ludlow Art League's Gallery in November. The Gallery is located at the corner of Oak Bay Road and Osprey Ridge Drive next to the Sound Community Bank. For more information, contact League President, Janice Gruber at 360-301-9840 or [JJGruber@cablespeed.com](mailto:JJGruber@cablespeed.com).



*Pebble on Abstract by Jolie Maki.*

Submitted photo

**art**  
Ceramics  
Drawing  
Fiber Arts  
Mixed Media  
Painting  
Photography

**classes  
workshops  
exhibitions**

**DIVE INTO FIBER ARTS**

MELISSA BIXBY  
INSPIRATION & EXPRESSION IN BATIK MAY 31

MARY O'SHAUGHNESSY  
ALTERED BOOKS JUNE 1-2

CONNIE LOBO & CAROL DUDLEY  
CREATE A FELTED PRAYER FLAG JULY 6

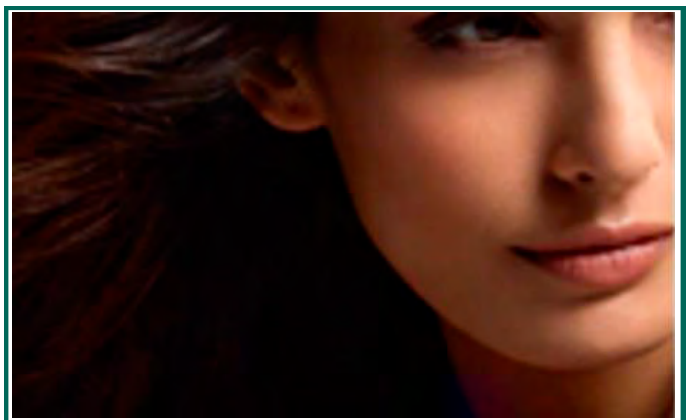
ANN JOHNSTON  
MONOPRINTING DYE ON FABRIC OCTOBER 4-6

ALISSA ALLEN  
FORAGING FOR COLOR: MUSHROOM DYE  
NOVEMBER 8-10



**PORT TOWNSEND  
SCHOOL OF THE ARTS  
PtARTS.ORG**

Ft. Worden, Bldg. 306 &  
Downtown, 236 Taylor  
info@PtArts.org  
360-344-4479



### Unique Pico Laser Technology

Renew Laser Aesthetics is pleased to announce the addition of an **Icon Laser** for hair removal, skin revitalization, leg vein clearance, scar removal, skin resurfacing and stretch mark treatments. Call us today at **360/394-6466** to find out more!

**20700 Bond Road NE, Poulsbo**

Go online to book an appointment at [www.kitsaplaser.com](http://www.kitsaplaser.com)

## Oak Bay Animal Hospital

975 OAK BAY ROAD • PORT HADLOCK, WA 98339  
E-mail: [oakbayanimal@olympus.net](mailto:oakbayanimal@olympus.net) • FAX (360) 379-8124  
Phone: (360) 385-PAWS



**Madelyn Curll, DVM**

*Housecalls since 1996*





# HOME.

It's the most important thing in our lives.  
It's the place we long for at the end of the day,  
and the place that holds all we love and  
everything we cherish. It's our Brokers'  
mission to bring the joy of home to every one  
of our clients with unrivaled expertise,  
passion and energy.

GUIDING YOU HOME.

**PORT LUDLOW BRANCH**  
9522 OAK BAY RD  
**360.437.2278**



**PORT TOWNSEND BRANCH**  
234 TAYLOR STREET  
**360.385.0836**

## New Season Move Management

Senior Moving Specialists

Need Help Moving?  
Down-sizing?  
De-cluttering?

- Custom fit plans for your needs & budget
- De-clutter, Stage Home for Market, RightSize
- Organize, Pack and Unpack So You Can Relax
- Estate Sales and Final Cleaning

Free in-home consultation!  
(360) 774-1255  
[www.NewSeasonMove.com](http://www.NewSeasonMove.com)





Licensed, bonded & insured





**NASMM**  
National Association of  
Senior Move Managers  
Premier Providers of Senior Relocation

Serving Jefferson County and Surrounding Area



<b>ELIN PHILIPS</b>		<b>34 YEARS PROVEN REAL ESTATE EXPERIENCE</b>	
	<b>Full-Time Managing Broker Representing:</b>		
	*Sellers *Buyers		
	<b>ABR-SRES-GRI</b>		
Cell 360.301.9115 Elin.Philips40@gmail.com			
<b>www.portludlowbrokers.com</b>			

2019 PORT LUDLOW SPECIAL EVENTS AT	
<i>The Fireside</i> — WATERFRONT DINING —	
<b>Thanksgiving Dinner</b>	
Thursday, November 28th Noon ~ 7:00pm	
	
<b>Christmas Eve Dinner</b>	
Tuesday, December 24th 4:00 ~ 8:00pm	
	
Please call to make your reservations 360.437.7412	

<b>New Location in PT Boat Haven!</b>	
<b>Power • Brokerage • Sail</b>	
	
	<b>Rob Sanderson</b> Broker, Captain, Instructor.
(360)316-9370    ptboatco@gmail.com	
★ PORTTOWNSENBOTATCO.COM ★	

	
<h1>Thankful</h1>	
In this season of giving thanks, we thank you for your support throughout the year.	
<b>Happy Thanksgiving!</b>	
9483 Oak Bay Road	360-797-9344
 <b>Windermere</b> REAL ESTATE PORT LUDLOW	

## Photography at the Port Ludlow Bay Club

Members of Port Ludlow DigitalLife's Photography Special Interest Group will exhibit photos at the Bay Club throughout November. The exhibit theme will feature people, animals, and "life" as viewed through members' lenses.



*Birthday Boy, by Jane Herzog.*

Submitted photo

The Group presents two workshops each month to learn camera use, composition skills, and the use of software to enhance photos and create video photo shows. Our workshop formats are both instructional and open for questions and discussion. They are open to the entire Port Ludlow community. People of all skill levels are invited to come and participate in these workshops. Do you do things with Apple devices? We've got a workshop for that, too.

For a schedule of our workshops, visit [pldigitallife@live.org](mailto:pldigitallife@live.org).

## One Day Only!

Not looking forward to spending your holiday budget in box stores, buying the same things as hundreds of other people? Not looking forward to cruisin' the parking lot hoping to get a space in the same town as the store? Or getting stuck on the wrong side of the bridge during one of its many openings? Or long lines at the cash register? Or...

Put it on your calendar, The Holiday Fair is coming **Saturday, November 9**, to the Bay Club from 10:00 a.m. to 4:00 p.m.

Sponsored by the Port Ludlow Art League, 25 local artists and crafters will be filling the auditorium with one-of-a-kind items not found anywhere else. From cutting boards to wooden bowls, cards, handcrafted soaps, quilts, pottery, ornaments, paintings large and small, garden art, and hand-knit scarves, the variety is amazing and all packed into one room for shopping ease. This will be your chance to start or even finish your holiday shopping and have a good time mixing with your friends, neighbors, local artists, and crafters.



*A sample of items available at the PLAL Holiday Fair.*

Submitted photo

If you have any questions, or for more information, please contact Judy Danberg at 360-473-7999 (Yes, that's 473!) or [shortline@cablespeed.com](mailto:shortline@cablespeed.com). Hope to see you there.

## Russell Jaqua and the New Iron Age

The Port Townsend School of the Arts, 230 Taylor Street, and Northwind Arts Center, 701 Water Street, both in Port Townsend, present a joint exhibit — "Russell Jaqua and the New Iron Age." The exhibit shows the remaining artwork in the Jaqua collection and runs from **Thursday, October 31**, through **Sunday, December 1**.

Jaqua moved to Port Townsend as a metalworker and jeweler. He was one of the first recipients of an artist residency at the newly formed Centrum which granted him access to Building #356 for 17 years. Because of Centrum's generosity, Russell was able to develop a sophisticated metal shop which he named Nimba Forge. In 1994, Russell purchased land in the Glen Cove Industrial Park and created a state-of-the-art forge facility that featured industrial-sized power hammers, allowing him to work on the monumental scale that interested him. He then opened the Jaqua Gallery on Taylor Street next to the Rose Theatre.

The design of the sculpture *For Willene*, in honor of his wife, which will be dedicated on **Saturday, November 2**, was created during an extraordinary birthday party in 2006. To help him, 32 artist-blacksmiths from all over the United States came to Port Townsend to create the sculpture. The party was called the Blacksmith Boondoggle because no one thought the project

*continued on next page*



*Jaqua* continued from previous page

could be completed in three days. But the magical creation of *For Willene* was successful and captured on film by Jane Champion. The film will be screened as part of the dedication ceremonies scheduled for the weekend of **Saturday and Sunday, November 2 and 3.**



For Willene.

Submitted photo

After Russell's death in June 2006, Willene officially donated the sculpture to the city in January 2017. Its display in the new Gateway Plaza (Sims Way/Hwy 20) provides a landmark for the Port Townsend Visitor Center.



## Performing Arts Calendar

### Saturday, November 2

Ribbon-cutting ceremony for the Jaqua sculpture, *For Willene*, acquired by the City of Port Townsend, 4:00 p.m., Visitors Center Plaza, 2409 Jefferson Street, Port Townsend. Further details in this issue.

### Sunday, November 3

Screening of the documentary *The Blacksmith Boondoggle: Making "For Willene,"* followed by a panel discussion, noon-1:30 p.m., Rose Theatre, 235 Taylor Street, Port Townsend, doors open at 11:30 a.m.; Tickets are \$5, available at the door.

### Wednesday, November 6

For 45 years, San Francisco's Kronos Quartet has become one of the most celebrated and influential chamber music groups of our time performing thousands of concerts worldwide, Wheeler Theater, Fort Worden State Park, Port Townsend, 7:30 p.m., 360-385-3102, [centrum.org](http://centrum.org).

### Friday, November 8

Petty Grass finds Keller Williams performing select Tom Petty covers in a rollicking bluegrass style alongside his eclectic quintet, 7:30 p.m., Bremerton's Admiral Theatre, 360-373-3743, [admiraltheatre.org](http://admiraltheatre.org).

### Friday and Sunday, November 8 and 10

The Rawson Duo on piano and violin perform early 20th Century art music by British composers John Blackwood McEwan, Ralph Vaughan Williams, and Arnold Bax in their Chimacum home. Sandy Rawson's "Tea and Fancies" complete the afternoon, 2:00, advance reservation of \$25 required, call 360-379-3449, [rawsonduo.org](http://rawsonduo.org).

### Saturday, November 9

The popular vocal group the Choral Belles sings at the Port Townsend General Store, 11:00 a.m., for a rare local performance, 206-612-9511.

### Sunday and Monday, November 10 and 11

Key City Public Theatre serves up an evening of dinner theater and a set of short comedic plays at the Alchemy Bistro & Wine Bar, Port Townsend, 360-383-5278, [KeyCityPublicTheatre.org](http://KeyCityPublicTheatre.org). Further details in this issue.

### Tuesday, November 12

Nella is a vocalist exploring Venezuelan folk, contemporary Latin, and soulful sounds from Andalusia on her first United States tour, 7:00 p.m., Admiral Theatre, Bremerton, 360-373-6743, [admiraltheatre.org](http://admiraltheatre.org).

### Saturday and Sunday, November 16 and 17

RainShadow Chorale performs a new composition, *The Secret of the Sea*, written for chorus, piano, string quartet, and percussion, 4:00 p.m., Lutheran Church of the Redeemer, [rainshadowchorale.org](http://rainshadowchorale.org). Further details in this issue.

### Friday, November 22

Join John Tesh for "Songs and Stories from the Grand Piano"—an intimate evening as he plays songs from his decorated career while recounting personal stories from his life, 7:30 p.m., Bremerton's Admiral Theatre. 360-373-6743, [admiraltheatre.org](http://admiraltheatre.org).

### Fridays, Saturdays, and Sundays, November 29 – December 27

The World Premiere of *Mercy Falls* at Key City Public Theatre in Port Townsend, 360-385-KCPT, [KeyCityPublicTheatre.org](http://KeyCityPublicTheatre.org). Further details in this issue.



**Bob's Lawn & Garden Service**

"Your Pruning & Lawn Care Specialist"

Quality Service Since 1991

**(360) 732-5052**

**Bob Hoyle, Owner**  
CERTIFIED MASTER PRUNER  
Contractor Lic. # BOBSLGS0160Z

P.O. Box 361 Chimacum, WA 98325-0361 E-mail: [bobhoyle@usa.net](mailto:bobhoyle@usa.net)

# Village Council

## PLVC Meeting Summary

by Sally Franzel, PLVC Secretary

### Annual Member and Board Meetings

At the annual meeting of voting members of the Port Ludlow Village Council (PLVC), the following two new Directors were elected:

- Sally Franzel, who will serve as secretary
- Jim Moffitt, who will serve as assistant treasurer
- In addition:
- Bill Dean was retained as president
- Mike Towner was appointed vice president, replacing Stephen Frenzl who is moving to Oregon and has resigned
- Paul Hinton was retained as treasurer

Pat Page and Phyllis Waldenberg had decided not to run for reelection and were thanked for the significant contributions they had made to the efforts of the Village Council over the past two years.

To close the Annual Meeting, Bill Dean and Pat Page presented a "Year in Review" which is available on the Council's website at [plvc.org](http://plvc.org). The review summarized the Village Council's activities during the year including twinkling lights in the median, health and welcome events, Free Willy Movie Night, new banners near the Village and enhanced trails and emergency management activities. Bill recognized and thanked the over one hundred volunteer committee members who had contributed their time and talents in assisting the Village Council towards fulfilling its mission.

## FRS Radio Workshop

by Pat Page, Guest Writer



Mike Towner.

Submitted photo

A comprehensive workshop on the use and communication etiquette of Family Radio Service (FRS) radios was held at the Beach Club on October 5, sponsored by the Port Ludlow Village Council Emergency Management team. The event was attended by 42 block captains, instructors, and presenters. It focused on the practical use of the

radios in anticipation of the Great Washington Shake-Out scheduled for October 17.

Mike Towner and Kate Riley led the exercise by walking the attendees through the use of the radios and explaining that not all FRS radios are the same. They pointed out several variations and

## Village Council Meetings

### Board Meeting

**Thursday, November 7**

3:00 p.m., Beach Club

### Workshop Meeting

**Tuesday, November 19**

3:00 p.m., Beach Club

[plvc.org](http://plvc.org)



Family Radio Workshop was recently held at the Beach Club.

Submitted photo

showed how best to configure the radio settings for an emergency. The attendees were divided into several groups who gathered at the four corners of the Beach Club's Bayview Room and practiced using their own radios to check in with the designated leader of the exercise. Towner emphasized that during the Shake-Out, block captains would be mapping their areas to determine "dead" spots where transmission cannot be completed and ways to work around those areas for maximal emergency communication.

At the conclusion of the workshop, the attendees were far more knowledgeable about the mechanics of the radios and effective communication with other block captains.

## Community Holiday Tree Lighting Ceremony

The Port Ludlow Village Council Community Development Committee in partnership with Port Ludlow Associates and Port Ludlow Performing Arts Council presents:

Community Holiday Tree Lighting Ceremony, Port Ludlow Village Center Courtyard, on **December 2** at 4:30 p.m.



Please join us to help decorate and light the tree! Festivities will include cookies and beverages, caroling by the Chimacum High School Chorus and maybe even a surprise visit from that Jolly old Man Dressed in red!



# Village Activities Calendar

*Events are open to everyone in the community unless they are specified for members only, or are for a special interest group.*

## November

### Friday, November 1

8:30 a.m. - Hiking group departs for Spruce Railroad Trail, Bridge Deck  
8:30 - 10:00 a.m. - SBCA all-community Pancake Breakfast benefit for Tri-Area Food Bank, Bay Club

### Monday, November 4

9:00 a.m. - NBLOA, Beach Club  
7:00 p.m. - Memoirs & More, Bridge Deck

### Tuesday, November 5

9:00 a.m. - Trails Committee, Fire Station  
3:00 p.m. - Course in Miracles, Bay Club  
3:00 p.m. - JCSF, Bridge Deck  
3:00 p.m. - *Voice* meeting, Fire Station

### Wednesday, November 6

9:00 a.m. - Hiking group meets for Timberton Loop  
11:00 a.m. - First Wednesday luncheon, Beach Club  
6:00 p.m. - Port Ludlow Singers, Beach Club

### Thursday, November 7

10:00 a.m. - Line Dancing, Bay Club  
1:00 p.m. - KnitWits, Beach Club  
3:00 p.m. - Bluebills, Bridge Deck  
3:00 p.m. - PLVC Board Meeting, Beach Club

### Friday, November 8

9:30 a.m. - SBCA Board of Directors meeting, Bay Club  
5:30 p.m. - SBCA Member Social, Thanksgiving Food Drive, Bay Club

### Saturday, November 9

10:00 a.m. - 4:00 p.m. - Port Ludlow Art League Arts and Craft Fair, Bay Club

### Sunday, November 10

1:00 p.m. - Marine Corps Birthday Celebration/Luncheon, Bay Club

### Monday, November 11

10:00 a.m. - DigitalLife Photo Editing, Bay Club  
Noon - 4:00 p.m. - Veteran's Day Memorial, Beach Club

### Tuesday, November 12

7:30 a.m. - Garden Club meets for Holiday Outing pick-up, Bay Club  
Noon - 4:00 p.m. - Christmas decorating, Bay Club  
3:00 p.m. - Course in Miracles, Bay Club  
6:00 p.m. - LVP Readers' Theater, Beach Club  
6:30 p.m. - Martha's Book Club, Bay Club

### Wednesday, November 13

9:00 a.m. - Hiking group meets for Timberton Loop  
4:00 - 6:00 p.m. - Artists' Reception, Sound Bank and Art Gallery  
6:00 p.m. - Port Ludlow Singers, Bay Club  
6:30 p.m. - Anything Goes Improv group, Beach Club

### Thursday, November 14

10:00 a.m. - PLDD regular meeting, Fire Station  
10:00 a.m. - Line Dancing, Bay Club  
10:00 a.m. - Legal and Estate Life Planning Seminar, Bay Club  
Noon - 8:00 p.m. - Hands on Clay, Bay Club

### Friday, November 15

8:30 a.m. - Hiking Group departs for waterfalls hike, Bridge Deck  
9:00 a.m. - 3:00 p.m. - Hands on Clay, Bay Club

### Saturday, November 16

11:00 a.m. - Health Care and Your Retirement, Beach Club  
6:00 p.m. - North Bay Potluck, Beach Club

### Monday, November 18

6:00 p.m. - DigitalLife All Things Apple, Bay Club  
7:00 p.m. - Bookworms group, Bridge Deck

### Tuesday, November 19

11:00 a.m. - Fly Fishers general meeting, Bay Club  
1:00 p.m. - KnitWits, Beach Club  
12:30 p.m. - Ludlow Senior Singles meets at Fujiyama Japanese Steak House, Silverdale  
3:00 p.m. - Course in Miracles, Bay Club  
3:00 p.m. - PLVC Workshop, Beach Club  
5:00 - 7:45 p.m. - Ludlow Village Players auditions, Bay Club

### Wednesday, November 20

9:00 a.m. - Hiking group meets for Timberton Loop  
1:00 p.m. - Port Ludlow Art League, Beach Club  
6:00 p.m. - Port Ludlow Singers, Beach Club

### Thursday, November 21

10:00 a.m. - Line Dancing, Bay Club  
1:00 p.m. - LMC Board of Trustees, Beach Club  
2:00 p.m. - PLPA Board meeting, Bay Club  
5:00 - 7:45 p.m. - Ludlow Village Players "call-back" auditions, Bay Club

### Monday, November 25

9:30 a.m. - DigitalLife Camera workshop, Bay Club  
11:30 a.m. - 4:00 p.m. - Christmas Decorating, Bay Club

### Tuesday, November 26

10:00 a.m. - 4:00 p.m. - Christmas Decorating, Bay Club  
3:00 p.m. - Course in Miracles, Bay Club

### Wednesday, November 27

6:30 p.m. - Anything Goes Improv group, Beach Club

### Thursday, November 28

Thanksgiving Day

### Friday, November 29

9:00 a.m. - 3:00 p.m. - Hands on Clay, Bay Club  
8:30 a.m. - Hiking group meets for Port Ludlow Trails, Bridge Deck

### Upcoming Events:

**December 2** - Dine and Discover, Bay Club

**December 8** - PLPA presents Buzz Brass, Bay Club

# Beach Club/North Bay News

*Submit your articles  
by email to [editor@plvoice.org](mailto:editor@plvoice.org)  
no later than the 8th of the preceding month.*

✳ Denotes Beach Club members-only activity

## Update from the Manager

*by Brian Belmont, General Manager*

The Beach Club has now transitioned to fall/winter hours which means that on Sunday the facility is only open from 8:00 a.m. – 4:00 p.m. The hours for the other days remain the same 7:00 a.m. – 9:00 p.m. The Sunday schedule will remain in effect through the end of April 2020.

Recently our maintenance staff led by Don Baker replaced the entry deck at the Bridge Deck building. The original plan was to replace the deck boards and handrails and reuse the support joists and beams. But once our staff started removing the old decking, it was obvious that there was very little material that was going to be salvageable. The decision was made to reduce the original deck size by about two-thirds in order to reduce cost and, because other than the entrance area, the remaining portion was rarely used.

The finished deck is well constructed, and the new handrail system is nice looking, safe, and sturdy, which wasn't the case with the old structure. Thank you, Don, Mike, and Rebecca. You did a great job!

On September 28 Ludlow Maintenance Commission hosted a Wine and Cheese event for new North Bay residents. Approximately 60 new members joined staff and committee and board members for a couple of hours of getting to know each other. I felt it was a great success in that we had an opportunity to welcome the new residents and get to know many of them. They learned about those of us who live and work in their new community, too. However, the part I enjoyed the most was seeing new residents meeting and connecting with other new residents and really enjoying each other's company.

As usual, Kim Bond did an exceptional job in planning the menu, preparing the food, and decorating for the event. Thank you to Nancy Kiesler and Ashely Avery who served as bartenders.

Those of you that frequent the Beach Club may have noticed that we have had Osmer Landscaping performing a fall cleanup of our groundcover that surrounds the Beach Club and Bridge Deck buildings. Jamie Osmer and his staff are trimming up the salal and the everlasting ivy that will overtake everything in its path if it's not managed.

As always, if you have questions or comments about this article or the on-going work at the Beach Club, I can be reached at 360-437-9201 or by email at [beachclub@olympus.net](mailto:beachclub@olympus.net).

## Important Dates

**LOA Meeting**  
**Monday, November 4, 9:00 a.m.**

Email: [portludlowloa@yahoo.com](mailto:portludlowloa@yahoo.com)  
Sign up for the *LOA Bulletin* by emailing the above address

**LMC Board Meeting**  
**Thursday, November 21, 1:00 p.m.**

Phone: 360-437-9201

E-mail: [beachclub@olympus.net](mailto:beachclub@olympus.net)  
Sign up for the *Navigator* online at the above address

Visit [lmcbeachclub.com](http://lmcbeachclub.com) for complete information

All LMC members are welcome. ✳

## Meet-and-Greet North Bay Potluck

Please join us for a meet-and-greet potluck on **Saturday, November 16**, at 6:00 p.m. BYOB and a hearty appetizer. Bring your friends and neighbors, too!

There is no charge for this event. Sign up at the Beach Club. For more information, please contact Debi Fong at [billycfong@gmail.com](mailto:billycfong@gmail.com). ✳

## Welcome to North Bay

The Ludlow Maintenance Commission (LMC) welcomes our new neighbors. We are glad that you're here. Please don't hesitate to contact LMC at [BeachClub@Olympus.net](mailto:BeachClub@Olympus.net) with your questions about living in Port Ludlow. If you haven't heard from the North Bay welcome chair, Jamie Bima, please feel free to contact her at 360-437-9335 or via email at [jamiebima673@gmail.com](mailto:jamiebima673@gmail.com).

## The Heart of the Community

*by Leslie Carlson, North Bay Editor*

Built in 1968, the Beach Club has for 51 years served as the heart of the North Bay community.

In 1983, an indoor pool and a hot tub were added and, shortly thereafter, the two upstairs bathrooms, the general manager's office, and the lobby were built—about the same time the gazebo was enclosed. The entrance was moved from near the north end of the building to where it is now, and the fireplace in the Bay View Room was removed.

Today the Beach Club is a bustling hive of activity on almost any day or evening, serving members of both the North Bay

*continued on next page*



*Community continued from previous page*

and the South Bay communities as well as the larger Port Ludlow community.



*Beach Club 1967.*

Members and their guests enjoy the indoor pool, hot tub, and exercise rooms year-round and the outdoor pool in the summer. Exercise classes include Mind Body Movement and Move with Ease as well as swimming lessons in the summer.



*Beach Club 1969.*

The Stamping and Paper Arts group, KnitWits, the Wine Club, Port Ludlow Singers, the Choral Belles, Anything Goes Improv, LVP Readers Theatre, and the Port Ludlow Artists League all meet at the Beach Club. On Sundays, the Peace Lutheran Fellowship meets in the Bay View Room and, once a month, the North Bay Potlucks are held there.

Meetings of Dine & Discover, First Wednesday Luncheon group, Port Ludlow Village Council and Workshop alternate between the Beach Club and the Bay Club.

The Bridge Deck welcomes not only a plethora of card groups throughout the week, including Duplicate Bridge, Poker, and Bunco, it also is the meeting site of two book clubs—the Port

Ludlow Bookworms and Memoirs & More—the weekly Art Workshop, the Men's Bible Study, and the Bluebills.

We are truly fortunate to live in such an active community and to have the Beach Club facilities and the wonderful Beach Club staff at the heart of the North Bay. Thank you one and all.



*Beach Club today.*

Photos provided by Brian Belmont

## Veterans

**Thank you for your service.**



The North Bay Lot Owners Association invites all Veterans and their guests to a Community Complimentary Coffee and Dessert Reception at the Beach Club

2:00 p.m. to 4:00 p.m.

**November 11, 2019**

**Don't forget to remove that sign!**

(event, sale, political, real estate)

**Is your advertising sign legal?**

**Check Jefferson County Code 18.30.150.**



# Bay Club/South Bay News

Submit your articles  
by email to [editor@plvoice.org](mailto:editor@plvoice.org)  
no later than the 8th of the preceding month.



Denotes Bay Club members-only activity.

## SBCA, Bay Club Update

by Mark Torres, Bay Club General Manager

### Bay Club Event Calendar

There has been a small change to the Bay Club Event Calendar. The pool schedule now reflects designated pool-use time periods by activity, and no longer refers to time periods by type of user, in order to comply with federal anti-discriminatory requirements/practices. Restricted periods, if not specified as a class (aquarobics, aqua-walk), are now listed as either "Open Swim" or "Lap Swim Only."

### Annual SBCA Tri-Area Food Bank Fundraiser

It's that time again! We are once again dedicating November to feeding the less fortunate members of the greater community. Last year, the annual South Bay Community Association's (SBCA) Tri-Area Food Bank fundraiser was a huge success; our final total was over \$9,400. Thank you to all of our SBCA members who contributed to this very successful fundraising drive. Every year the SBCA community has increased their contributions to this worthy cause.

Over the last four years, the SBCA has contributed over \$26,000. That equates to food purchasing power in excess of 500,000 pounds of food for the community. The Food Bank estimates its need for the area it serves to be 450,000+ pounds every year. Your contribution matters—particularly at this time of year. SBCA support is needed due to the holidays, as the demand for food is very high at the exact same time as individual contributions from the surrounding communities are typically at their lowest. Without SBCA and our other Port Ludlow residents' generous contributions during this period, the Food Bank would be challenged to meet the demand of our area. Thank you again; your generosity is very much appreciated by the SBCA and the many families that you have helped this year.

### Reminder: SBCA Assessments and Receivables Policy

The SBCA Board of Directors and management team wants members to be aware that the SBCA dues assessment is now \$230 per quarter. An increase of \$5 was voted in at the annual meeting in July 2019. If you are set up with your financial institution for automatic payments, please check to be certain the amount is correct. This notice is also a reminder about late-payment penalties: "In accordance with the SBCA Assessments and Receivables Policy A.10 adopted May 6, 2016, SBCA annual assessments are payable on a quarterly basis. Quarterly payments are due on the first day of each calendar quarter (July 1, October 1, January 1, and

## SBCA Important Dates

**Monthly Board Meeting**  
**Friday, November 8, 9:30 a.m.**

### Committee Meetings

Activities and Amenities: **Monday, November 4, 9:30 a.m.**

Communications: **Monday, November 4, 1:00 p.m.**

Facilities: **Tuesday, November 5, 9:30 a.m.**

Finance: **Tuesday, November 5, 1:00 p.m.**

Architectural Review: **Friday, November 15, 9:30 a.m.**

To keep informed of SBCA Activities & Events,  
please visit [plsbca.org](http://plsbca.org).

Meeting minutes are posted at [plsbca.org](http://plsbca.org)  
under Association Business.

All SBCA members are welcome.

April 1). Any delinquent payment shall bear interest on the unpaid balance from 30 days after the due date at the rate of 1% per month until paid. In addition, a one-time late fee of \$20 shall be imposed for any quarterly payment that is more than 30 days late." We will be making changes to our accounting software to facilitate more rigorous enforcement of the late-payment penalties beginning January 1, 2020. [Jurca, 9/11/19] Thanks to all our wonderful members for understanding our organization's financial demands and respecting the necessity of prompt quarterly payments.

### SBCA Annual Holiday Gala

Tickets for the SBCA Annual Holiday Gala on **December 14** will go on sale on November 18. The cost per person will be \$50. The event will include wine, appetizers, a three-course dinner, and entertainment/dancing. Space is limited to 150. Deadline to purchase tickets is **December 9**. Stay tuned for more details on reception, meal choices, and entertainment. More information will be coming via email to members soon.

## Thanksgivings

by Ray Sheldon, South Bay Community Association Board President

Jere and I moved to Port Ludlow in January 2018 after living on Bainbridge Island for 26 years. We're still close enough to visit our two daughters and their families on Bainbridge and another daughter and her family in Magnolia.

Activities on Bainbridge revolved around family, friends, and golf. Our activities in Port Ludlow still include family, a number of new friends and occasional golf, but have been extended to include hiking, pickleball, fly fishing, volunteering in the community, enjoying theater performances, and Olympic Peninsula exploration ... not being particularly adept at sports, but not stressing about it, and enjoying the freedom to get in the car and find new, interesting places.

*continued on next page*



*Thanksgivings continued from previous page*

Many mornings, we walk around our home in Teal Lake Village, check to see if there are any deer or other wildlife, and give thanks for being in this time and place—thanksgiving for being able to live in this wonderful home and to be a part of this community. We've spoken with many others who, like us, when we come home across the Hood Canal Bridge, exclaim how the mountains to our left and the water around us are so different day after day, and how good it feels to be home.

I read an article a few weeks ago which proposed that the word “gratitude” can lead to a happy life. Jere and I definitely have much gratitude and great “thanksgivings” for the life we have here in Port Ludlow. So, one might ask: What does this have to do with the South Bay Community Association President's report this month? An answer might be that there's a unique kind of lifestyle here. With such easy access to the Bay Club, its facilities and events, the Bay Club offers opportunities for various physical activities, hobbies, social events, and learning. This is a large part of why we feel so thankful for being here.

But there's one more thing. This month we all celebrate Thanksgiving, many getting together with family, and others with friends, or both. Others will gather to celebrate the day together at the Old Alcohol Plant, where a group has been enjoying a Thanksgiving dinner for a couple of years. There are some who don't choose to celebrate this holiday for a variety of reasons. Some of our neighbors may not feel like they have many thanksgivings or have no plans for “celebrating” Thanksgiving Day. One of the things which stands out in this community is that most of us are open to sharing our blessings with others—making their days better for us having been in them, possibly generating their thanksgiving for having us as kind and considerate neighbors. We are definitely at home here and are thankful for it.

## Celebrating November at the Bay Club

*by Carol Riley, Chair, Activities and Amenities*

November, a month filled with thoughts of food and thanks, is also filled with activities at the Bay Club. November traditionally has been the month of giving to the Tri-Area Food Bank. The Bay Club will be collecting monetary donations all month for this worthy cause and hoping to surpass last year's amazing number – \$9,400!

We will be hosting the monthly First Friday Pancake Breakfast with all the usual delicious offerings on **Friday, November 1**, 8:30 to 10 a.m. (feel free to linger longer) and sharing the proceeds with our wonderful Tri-Area Food Bank. So many families rely on the food bank at this time of the year, so come enjoy yourselves and support the Food Bank in their efforts. Breakfast will be served by staff from the Port Ludlow Voice. Did you know that our much-loved *Voice* publication is crafted each month by dedicated volunteers? Take the opportunity to meet/mingle with the *Voice* staff, ask those burning questions you have been thinking about, and tell them how much you love and depend on the *Voice*.

The member social this month is on **Friday, November 8**, from 5:30 – 7:30 p.m. Another great opportunity to sip, munch,

minge, and be grateful for time spent with friends both old and new. We encourage all who attend to bring non-perishable food items for the Tri Area Food Bank. A special item, much loved by food bank clients, is pancake mix and maple syrup, if you are looking for a suggestion.

The Bay Club will be aglow with holiday decorations, but only if we can count on you to join our coordinator Rachel Boock on **Monday, November 25**, at 11:30 a.m., and **Tuesday, November 26**, at 10:00 a.m. to put the decorations in place. We have a stunning new Christmas tree this year, so please come and be a part of the festivities.

Definitely in the “give thanks” category, the Bay Club will again be a “tree host” for *Christmas for Children*, an organization that has been helping struggling families put presents under the Christmas tree for their children since 1974. Members are encouraged to choose a tag, buy a gift, and return it to the Bay Club by December 12. Gift tags will be available at the Bay Club the week of Thanksgiving. Details can be found at [christmas4children.com](http://christmas4children.com).

## South Bay Gleanings

*by Jenise Harper, South Bay Editor*



*Autumn colors at the South Bay Club, one of Port Ludlow's notable community centers.*

Photo by Jenise Harper

Ta-Dah! Drumroll, please. Kudos to the winners of the Great American Chowder Showdown, via the SBCA. The “People's Choice” award went to Victoria Barri and Joe Vozarik for their tasty clam chowder, while the “Judge's Award” heralded Sarah Walkowski for her sumptuous seafood chowder. All entries were award-winning caliber, including “wild-caught” Albacore Tuna chowder (the chef actually caught the tuna off the coast of Westport), spicy shrimp chowder, salmon chowder, and corn chowder. We do know how to eat yummy food at the Bay Club.

A huge round of thanks goes to Grace Christian Center for responding to the SBCA request for a Christmas Tree. The local group donated a 12-foot lighted Christmas Tree which will grace the Bay Club over the holidays. What a tremendous gift! Thank you!

For those who enjoyed our Concerts on the Green this past summer, Kirk and Kompany (the August jazz group) will be

*continued on next page*

**Gleanings** *continued from previous page*

returning to the Bay Club for our December 14 gala. Not only will patrons enjoy a great catered dinner, they'll be treated to outstanding music by talented musicians known throughout the State of Washington and the entire country. Tickets are limited for the annual gala; sales open **November 18**. Seriously, don't wait! This is an event you won't want to miss.

I'm constantly in awe of all the activities held at our beautiful Bay Club. There are monthly socials for members that are phenomenal, but the club is also home for many community events. The Port Ludlow Performing Arts brings professional concerts to the community with a seven-program season each year. Did you attend "Three Knights and a Tenor?" Incredible. "The Magic of Matthew Laslow," a teenage wizard. Add to that the Ludlow Village Council's "Welcome" event, the "Brewfest by the Bay" benefitting Chimacum Backpacks for Kids, and the Garden Club Expo. My goodness! Our Bay Club, as well as the North Bay Beach Club, are tremendous gifts to our community.

This month's *Gleanings* is simple: There's plenty of action in Port Ludlow, and there's no way anyone can moan about "having nothing to do." Just make the effort. Get away from the television; drive five minutes to the Bay Club. Participate! Be a part of the community! Enjoy!

## Welcome to South Bay

The South Bay Community Association welcomes our new neighbors. We are glad that you're here, and we hope to meet you at one of our monthly socials. Please don't hesitate to contact us with your questions about life in Port Ludlow. To find out more about SBCA news and events, you can visit [plsbca.org](http://plsbca.org).

[www.plvoice.org](http://www.plvoice.org)

### LATE-BREAKING NEWS, CALENDAR UPDATES

CURRENT ISSUE AND HISTORICAL ISSUES ON-LINE

COLOR PHOTOGRAPHY • LETTERS TO THE EDITOR



### Port Ludlow Community Church

9534 Oak Bay Road  
360-437-0145

[www.mypgcc.net](http://www.mypgcc.net) [plcc@olympus.net](mailto:plcc@olympus.net)

**Brent Hirschy**  
Pastor

*"Connecting Christ and Community"*

**Sunday Worship - 10:30 a.m.**  
**Adult Education - 8:45 a.m.** **Home Groups - Tuesdays**  
Blending Traditional Hymns with Contemporary Worship

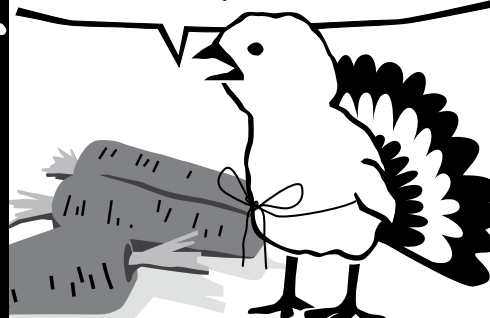
• Come • Connect • Grow • Go •

Liberty Shores  Harbor House  
SENIOR LIVING MEMORY CARE

*Exceptional Care  
in an Exceptional Place*

19360 Viking Ave. N.W., Poulsbo, WA 98370  
360.779.5533

chimacum  
corner  
farmstand



**Reserve your turkey!**

9122 Rhody Dr.  
360-732-0107

order online at [chimacumcorner.com](http://chimacumcorner.com)

## GALE INVESTMENT MANAGEMENT

**STEPHANIE GALE, CFP®, AIF®**

Holistic financial planning & investment management

*New Uptown location:*

675 Tyler Street

Port Townsend, WA 98368

360-385-5044

*By appointment:*

9481 Oak Bay Road, Suite F

Port Ludlow, WA 98365

[www.galeim.com](http://www.galeim.com)

SECURITIES AND ADVISORY SERVICES OFFERED THROUGH COMMONWEALTH FINANCIAL NETWORK,® MEMBER FINRA/SIPC,  
A REGISTERED INVESTMENT ADVISER. FIXED INSURANCE PRODUCTS AND SERVICES OFFERED THROUGH CES INSURANCE AGENCY.

*We provide solutions that give you LEGAL PEACE OF MIND*



**Richard C. Tizzano**  
Attorney at Law

Licensed in  
Washington &  
California

### Estate Planning

- Revocable Living Trusts
- Probates
- Limited Partnerships
- Limited Liability Companies
- Adoptions
- Wills

### Elder Law

- Life Care Planning
- Special Needs Trusts
- Powers of Attorney
- Guardianships
- Medicaid Eligibility
- Health Directives

Call for an  
appointment  
**(360) 779-5551**

[www.westsoundlegal.com](http://www.westsoundlegal.com)

19717 Front Street NE • Poulsbo • [info@westsoundlegal.com](mailto:info@westsoundlegal.com)





# Sports & Games

## Mens Golf Association News

*by Tim Propeck, Sports Editor*

The multi-round tournament known as the President's Cup was completed by members of the Mens Golf Association (MGA) at the end of September. The format was a number of match play rounds with the winner moving on to face the next opponent until a final champion emerged. It took a total of four rounds to establish the winners of the four flights that were initially established based on handicaps. The winners of the flights then faced off in the next two rounds to determine the final winner and runner-up.

This year's winner was Norm Shissler, and the runner-up was Bob Humphries. The other two winners of their flights were Roger Reighard from Flight 1, and Bob Bertoia from Flight 2.

There was also a consolation division for players who lost their first round. They went through a similar series of matches to determine an overall winner, runner-up, and flight winners.

Jack Lambton was the overall winner and Terry Umbreit was the runner-up. Steve Hendrick was the Flight 1 winner, and David Aho was the Flight 3 winner.

Congratulations to everyone who finished in the money.

The other major event for the MGA in September was the Ludlow Cup Final. This is an event modeled after the Ryder cup where the team from the US plays an international team. In our case, members of the MGA are split into two teams at the start of the season and played a series of four matches over the summer, where individual golfers earned points to qualify for the final team. Those two twelve person teams then faced off in a 27-hole event to determine the winning team. This year's winner was the Starboard team: Shelly Washburn, Mike Raymond, Bruce Case, Joe Vozarik, Terry Lyle, Ken Avicola, Ken Baldwin, Dean Morgan, Norm Shissler, Rick Morasco, Bob Bertoia, and Jim Laker.

## Mens Golf Association Fall Banquet

*by Tim Propeck, Sports Editor*

The members of the Mens Golf Association (MGA) held their annual Fall Banquet on October 18 at the Beach Club. The winners of the major tournaments over the course of the season were highlighted. There were also awards presented to winners of a season-long competition known as the "Eclectic." This is based on the lowest score on each hole achieved over all the rounds played during the season. There were awards for the best scores both with and without handicaps applied. The winners for Low Gross scores were Steve Hendrik, Flight 1; Norm Shissler, Flight 2, Doug Durasoff, Flight 3. The Low Net winners were Steve McDaniel, Flight 1, Rick Morasco, Flight 2; and Jack Lambton, Flight 3.

Two other awards were presented. One was for the most improved golfer over the course of the season, based on the percentage improvement of their handicap index. This year's winner was Shelly Washburn. The last award is known as the

"Len Hunton" award. Len was the first president of the MGA in 1976, the founding year of the golf course. The award is given to the MGA member who makes significant contributions to the success of the MGA, supports the game of golf, and demonstrates exemplary sportsmanship. The winner each year is chosen by past winners of the award. The winner this year was Russ Michael, who was the board president in 2018.

The last item of business for the banquet was the election of a new board of directors for the 2020 season: Steve McDaniel, president; Mike Raymond, vice-president and tournament director; Ken Avicola, secretary; Mike Burke, treasurer; Jim Laker, social chair; Jack Hirschman, handicap chair; Terry Umbreit, director at large; Norm Shissler, director at Large; Tim Propeck, past president.

## Port Ludlow Hiking

The hiking group met in early October to plan the adventures for the rest of fall, winter, and early spring seasons. Copies of the schedule are available at the Bay and Beach Clubs, as well as being posted on the Hiking Club web site. Special thanks to the volunteers who stepped up to coordinate these excursions.

Unless otherwise noted, hikers meet at the Bridge Deck at 8:15 a.m. to arrange carpools, get directions to the trailheads, and depart at 8:30 a.m.

### Friday, November 1 – Spruce Railroad

Join a gentle five to seven mile walk along a historic abandoned railroad grade above Lake Crescent. See the results of considerable trail upgrading and reconstruction of the railroad tunnels. Information: John Goldwood 360-344-2318 or John Fillers 360-215-4049.

### Friday, November 15 - Waterfalls

Explore several waterfalls accessible from highway 101. Expect to walk an easy four to six miles. Even if you have enjoyed this hike in years past and might consider not going again ... nature is always changing, so we will always have something new to witness as we share in this wonderful expression of nature in the fall season on the Olympic Peninsula. Please plan to come and enjoy nature at its best. Information: Merrily Mount 360-437-9308.

### Friday, November 29 – Port Ludlow Trails

Walk off Thanksgiving dinner with a stroll through some of our Port Ludlow trails. Route to be determined. **Special 9:00 a.m. start time.** Leader to be determined.

### Every Wednesday: Timberton Loop

Walk the 4.5 mile Timberton Loop. Enjoy views of the Olympic Mountains. Meet at the parking lot trailhead on Timberton Road at 9:00 a.m.

For more hiking information and pictures of previous hikes to these and other destinations, check out [portludlowhikingclub.com](http://portludlowhikingclub.com).

## November Trails Mix

by Tim Rensema, Contributing Writer

The Port Ludlow Village Council (PLVC) Trails Committee does not own the land under the trails, it just assumes responsibility for maintaining the trails. The homeowners associations (HOAs) own the land under the trails and around them. PLVC has easements that are 10 feet wide written into agreements with the HOAs.

Our trails were constructed for one person to walk alone. In some cases, they are wide enough for two, but that is unintentional. Please do not "adjust" or expand the trails as they have been constructed the way they are for a reason. We are only authorized to work within the 10 feet width of the trails. If you, as a homeowner, wish to act as a trail steward and make recommendations about improving the trails, then come to our trails committee meetings held the first Tuesday of each month at 9:00 a.m., or send an email to [trrens1974@gmail.com](mailto:trrens1974@gmail.com) or [merrilymmount@yahoo.com](mailto:merrilymmount@yahoo.com). The November meeting will be at the fire station and the December meeting will be at the Beach Club. We will be presenting to South Bay Community Association, Port Ludlow Associates, Port Ludlow Village Council, and Ludlow Maintenance Commission our accomplishments for this year and our plans for next year.

If you have a project you think needs to be done on a trail, please go through your respective HOA to present it to the trails committee, and we will attempt to accomplish it.



**Spirits**  
BAR & GRILL at the  
OLD ALCOHOL PLANT

**SPIRITS BAR & GRILL**

**CELEBRATE THANKSGIVING  
WITH US!**

**BUFFET DINNER WITH ALL THE  
FIXINGS! \$35.00 PER PERSON  
OPEN 12:00 – 5:00 PM**

**NOVEMBER 28, 2019  
310 HADLOCK BAY ROAD  
PORT HADLOCK WA 98339  
360-390-4017  
WWW.OLDALCOHOLPLANT.COM**

## Peninsula Legal Secretarial Services, LLC



**Cammy Brown**

**Affordable Secretarial Services  
Legal & Business**

**Notary Public**

**360-301-2590  
[cebrow@cablespeed.com](mailto:cebrow@cablespeed.com)**

*"If I can't help you, I will find someone who can!"*



**ALDRICH'S  
MARKET**

**GROCERY ~ DELI  
PRODUCE ~ BAKERY  
SUSHI ~ MEATS  
BEER WINE SPIRITS  
LOCAL & ORGANIC**

**THE PICTURE  
OF GOOD  
FOOD**

**WASHINGTON STATE'S OLDEST MARKET  
FRESH-LOCAL-ORGANIC  
SINCE 1895**

**940 LAWRENCE ST, PORT TOWNSEND, WA 98368  
[WWW.ALDRICHS.COM](http://WWW.ALDRICHS.COM) ~ (360)385-0500**



**Port Ludlow Art League**

**GALLERY**

**Next to Sound Community Bank  
Open: Tues Through Sat - Noon to 4 pm  
[www.portludlowart.com](http://www.portludlowart.com)**

giveJefferson.org

**November 1 - December 31**



**For 63 years, the UGN Annual Campaign, has supports over 25 local nonprofits that work to improve health, education and economic stability for everyone in our community.**



**Please donate today.  
Every dollar you give stays  
in Jefferson County.**

---

**VISIT  
GIVEJEFFERSON.ORG**







## Cucina

Port Ludlow Village 360-437-8200

**\$4 Off**

**\$3 Off**

### Extra Large Pizza Large Pizza

\*one coupon per order & may not be combined with other coupons.

**Dine In - Take Out - Delivery (home & marina)**  
www.cucinaitalianrestaurant.com

## Do It Right Roofing & Construction

**Located locally in Port Ludlow • Excellent Local References**  
**Quality and Customer Satisfaction is our #1 Goal**

- ◆ All Types of Composition
- ◆ Metal, Cedar Shakes
- ◆ Re-Roofs
- ◆ New Construction
- ◆ All Types of Repairs
- ◆ All Types of Construction
- ◆ Repairs
- ◆ Remodels
- ◆ Decks, Siding
- ◆ Custom Woodwork

General Contractor's License  
Lic # DOITRIR943Q  
Bonded, Insured

William Bacchus  
Phone: **360.774.6348**  
email: doitrightroofing@msn.com

## Where Tradition Meets Technology



**Since 1996**  
**Full Service Auto & Truck Repair**  
**Foreign, Domestic**  
**& Hybrid Maintenance**

- Factory Maintenance
- Engine Repair & Service
- Transmissions / Clutches
- Electrical
- Brakes / Batteries
- Oil Lube Filter
- Alignments



National Institute for  
**AUTOMOTIVE**  
**SERVICE**  
**EXCELLENCE**



Approved  
Auto Repair



ENVIROSTARS

ACDelco



**www.autoworkspt.com**

**2313 3rd Street • Port Townsend**  
**Behind Les Schwab off Sims Way**

**360-385-5682**

## Shine Mobile Veterinary Services



**(360) 302-6077**

**Dr. Jaclynn Imai**



**Wellness, Vaccines, In-home Euthanasia**  
**Quality animal care in the comfort of home**



**Find us on Facebook and Nextdoor**  
**www.shinemobileveterinary.com**



**newleaf**  
design | build  
NEWLED\*872C2



### Residential Design Build Firm

- Architectural design for new homes and remodels
- Permit facilitator for all phases
- Full service general contractor

*Our team of expert craftsmen will take your project from design phase to handing you keys to your new home!*

Marie Peterson, President  
360 437 8148 • Cell 360 621 0312  
marie@newleafwa.com

## PORT LUDLOW BROKERS LLC

PRESENTS  
**CELEBRATE HOME  
FOR THE HOLIDAYS  
COMMUNITY OPEN HOUSE**  
NOVEMBER 17TH • 4PM - 6PM



**40 TEAL LAKE ROAD**

**RSVP 360.437.4111**

(NOT NECESSARY BUT APPRECIATED)

**INDEPENDENT REAL ESTATE  
PROFESSIONALS**



## Financial Freedom for Families Since 1908

74 Breaker Lane  
Port Ludlow, WA 98365  
360.437.7863

**Kitsap Bank**

**FDIC** Member FDIC

**Senior's Special**

**Every Sunday**  
(55) plus Receive a FREE UPGRADE

**Lady's Special**

**Every Tuesday**  
Receive a FREE UPGRADE

**Guy's Special**

**Every Wednesday**  
Receive a FREE UPGRADE

Environmentally friendly!  
**LOCALLY OWNED!**

**\$29.95 monthly**  
unlimited wash club  
**FULL SERVICE professional**  
detailing available!



**thecarwash**  
515 Howard St. • 379-5717  
Located in Port Townsend  
at the first roundabout

## Glessing & Associates

**Certified Public Accountant**  
**Kathleen A. Glessing**

- Tax Preparation for Individuals, Partnerships, Corporations, Estates and Trusts
- Financial and Tax Planning
- Accounting and Auditing, Preparation of Financial Statements
- Computerized Bookkeeping and Payroll, Business Start-up
- Senior Financial Services

**Telephone 360-437-9443 / Fax 360-437-9446**  
56 Village Way, Port Ludlow, WA 98365



**Michael Haberpointner, PT, DPT**  
**Timothy Mansour, PT, DPT**  
**Daniel Wittrock, PT, DPT**



## ACTIVE LIFE

### PHYSICAL THERAPY

Balance Training • Spinal Rehab • Rehab After Surgery  
• Vertigo Treatment • Personal Training  
Medicare and most insurances accepted  
[www.activelifetherapy.com](http://www.activelifetherapy.com)  
9483 Oak Bay Rd. • Port Ludlow, WA 98365 • (360) 437-2444



## Hear for Life

### AUDIOLOGY



*"When experience makes the difference."*  
Comprehensive Hearing Evaluations  
Digital Hearing and Assistive Listening Devices  
Hearing Device Repairs & Batteries  
Insurance Billing • Physician Referrals

**Call For A Hearing Consultation:**  
**360 437-7767**  
**115 Village Way, Port Ludlow**

**Camron Meikle, Au.D.**  
Board Certified Audiologist

## Classifieds

The cost of classified ads is 30 cents per word (\$6 minimum charge), targeting 30 words max/ad. There is a prepayment discount, 10% for 6 months, 15% for a year. We accept "personal" ads such as public "thank you" ads. We do not accept ads of a political nature. Deadline for new ads, changes, and cancellations is the 8th of the preceding month. Ads will run until canceled. Email your ad and contact information (name, billing address, phone number, and email address) to Bill Blackburn at [Voiceclassified@plvoice.org](mailto:Voiceclassified@plvoice.org) or call 360-344-2271.

### COMPUTER & TECHNOLOGY

**Pizzo Computer Consulting.** Taming your computer nightmares with patience, humor & years of professional experience. To learn more about us & our happy customers, [pizzoconsulting.com](http://pizzoconsulting.com) or 360-437-7738.


**Computer Sleuth** – Is your computer walking instead of running? Try the simple things first! Local references available. Call Eric Hammond 360-343-4052.

**Apple Mac and PC warrantied sales and service** at Port Townsend Computers includes Mac warranty repair by the Peninsula's only authorized Apple technician. House calls: setup, repair, and networking. 360-379-0605.

**Computer-Fix.** Your complete computer services company, available 24/7. Repair, data recovery, virus removal, affordable prices. PC & laptop. Broadstripe authorized affiliate. Kala Point Professional Bldg., 260 Kala Point Drive, Ste. 202, 360-385-6166, [computerdotfix.com](http://computerdotfix.com).

### EMPLOYMENT

**Port Ludlow Resort.** Now hiring for multiple full and part-time positions. Please visit [portludlowresort.com/about-us](http://portludlowresort.com/about-us) to view and apply for open positions.



## DISCOVERY

### PHYSICAL THERAPY

**SPECIALIZING IN**  
Post-Surgical Rehab ■ Athletic/Work Injuries  
Neurological Injury ■ Cancer Rehab ■ Balance Training  
Senior Fitness Classes ■ Vertigo Rehab  
Incontinence ■ Foot/Ankle Injuries

Amy Irene Lynch, PT   Gail Maciejewski, PT   Blake Thedinga, DPT   Max Selisch, PT  
Janet Hutchison, PT   Ingrid Musson, LMP, CFT   Erica Nixon-Mack, PT   Wendy Nordquist, OT

**WWW.DISCOVERYPT.COM**  
**27 COLWELL ST. (RHODY DR.) 360.385.9310**

**Heart-Centric Work!** Join Peninsula Homecare Cooperative and help seniors stay safe and comfortable in their homes. Enjoy job security, profit sharing, & wages between \$15 and \$21 an hour. 360-385-9664. [phc.coop](http://phc.coop).

**Property Manager.** 24-unit condo association seeks Property Manager to do routine maintenance and repairs, oversee outside contractors, and advise Board about condition of property. Please call or email Carol Reichstetter 360-437-7837 by message or [creichstetter@earthlink.net](mailto:creichstetter@earthlink.net) for more information.

---

### FINANCIAL SERVICES

---

**Taxes & Accounting.** We specialize in tax preparation & needs of small businesses. We make house calls. Call 360-437-1392. Great service/fair prices. Duane E. Anderson, CPA.

**Accounting:** Bookkeeping services, payroll & payroll taxes, tax return preparation. Need someone to get your books ready for tax season or to keep the books up to date? Do you need help with personal or business tax return preparation? More than 20 yrs. experience. email Rhonda @ [r3granger@gmail.com](mailto:r3granger@gmail.com) or call 360-358-5340 for more info.

---

### HEALTH & BEAUTY

---

**Joy Point Acupuncture** utilizes Shiatsu massage, cupping, and Chinese medicine to relieve pain at the source, improve mood, and address seasonal changes. Accepts major insurances. Contact Jillian Rifkind, L.Ac., EAMP at 661-478-8250 or visit [joypointclinic.com](http://joypointclinic.com). Office location is 9481 Oak Bay Road.

**Ludlow Bay Massage & Wellness Spa** - Serving Port Ludlow since 1998. We offer a spectrum of treatments to suit each person. Massage Therapy, Skin Care, Waxing, Body Scrubs, Mud Wraps, Eyebrow Microblading, Eyelash Extensions & Gift Certificates, Open Mon.-Sun. by appointment. [PortLudlowSpa.com](http://PortLudlowSpa.com), 360-437-3798.

**Advanced Myofascial Release & licensed intraOral Practitioner,** Alyssa Grassi, LMT offers **Myofascial & Therapeutic Massage Sessions** by appointment in Port Ludlow and Sequim. 845-750-5678, information available on [www.mfimt.info](http://www.mfimt.info) or [TheraputicArtsCenter.com](http://TheraputicArtsCenter.com). Email: [Alyssa@MyFavoriteMassageTherapist.com](mailto:Alyssa@MyFavoriteMassageTherapist.com).

**Physical Therapy in Port Ludlow.** Active Life Physical Therapy. Our services include balance training, spinal rehabilitation, vertigo treatment, and joint replacement therapy. Medicare accepted. 360-437-2444. [Michael@activelifetherapy.com](mailto:Michael@activelifetherapy.com).

**Foot Care.** Dr. Steven Reiner, DPM, Podiatric Physician & Surgeon. Bunions, hammer toes, toenails, diabetic shoes, orthotics, heel pain. Located at 204 Gaines Street in Port Townsend. Call 360-385-6486 for an appointment.

**Tootsies: your neighborhood nail spa.** 7551 Oak Bay Rd (across from Port Ludlow Fire Hall) Available by appointment, 360-437-2332.

**Haircuts at Sonja's Bayside Barber.** Open Wednesday thru Friday starting at 8:30 a.m. By appointment only, located in Port Ludlow Village, 360-301-0009. Thank you for your business.

**Ear Candling.** Gentle, fun, relaxing, and soothing to the soul; treat yourself! This is a routine health procedure in many European countries. Call Janette at Discover Your Health, 949-275-3848.

**Need Sleep?** Have you thought of room-darkening shades in your bedrooms? Call Diane for a Free quote. Competitive pricing, professional services. Clearview Blinds 360 774-2658, [diane@cvblinds.com](mailto:diane@cvblinds.com).

**Susan's Foot Care** - "Gentle Care for your Toenails and Feet" Done in the comfort of your own home. Fingernail clipping included. Call for more information to make appointment. Port Ludlow client references available. Susan Vokurka, L.P.N. 360-379-5710.

---

### HOME RENOVATION & DÉCOR

---

**Quality Painting with Affordable Pricing.** Exterior, interior. Pressure washing. Lots of local Port Ludlow references. Bonded & insured. License CBSPAP\*917CD. Call Tony Forrest, owner, CBS Painting, for a free estimate. 360-633-5702.

**I Can Hang Your New Wall Covering or Remove the Old.** Over 30 years' experience. Neat & clean. All work guaranteed. Licensed & insured. Call John, 360-504-2309.

**Arnett's Affordable Home Improvement** - All remodeling and home repair, Kitchen and Bath Specialist, Tile, Stone, Hardwood and Laminate flooring, Construction and repair of Decks. "When you want it done right the first time-call us!!" Arnett General Construction 360-477-1935; [WEB.constructiontilepro.com](http://WEB.constructiontilepro.com); CCDONARAG875DL; local references.

**Ludlow Custom Contractors.** Specializes in custom home painting, decks, & finish carpentry. Contractor's License #MOSHECJ994MC. Christopher Mosher, 360-301-9629. "Custom Designing Your Dreams."

**RW Construction.** 30-years' experience remodeling & custom construction. Small jobs OK. I also consult on renovations or remodels. Avoid innocent but expensive mistakes. Great references. Licensed/bonded JOHNRC\*983DF, 360-302-1242.

**JDG Construction Inc.** 30 years in local business. Free estimates on remodel & new construction, 360- 385-3287.

**Do It Right Roofing & Construction.** High quality roofing & construction & remodeling. Owner on every job. General contractor Reg. #DOITRIR943QL. Locally located in Port Ludlow. Excellent local references. 360-774-6348.

**Dave Peterson Tile & Stone.** 35 years' quality service. Kitchen & bath specialist. Master stone setter. General contractor. Modeled cement showers. In-floor heated ADA showers. Neat & clean. Local references. Lic#CCDAVEPPT943DW. 360-681-2133.

**All your Flooring needs!** Carpet, Tile, Hardwood, Luxury Vinyl and Laminate Full Showroom with the latest designs from major manufacturers. We strive to be competitive! Come see us! Dana Pointe Interiors, Port Ludlow Village Center. 360-437-2060. [info@danapointeinteriors.com](mailto:info@danapointeinteriors.com).

**Professional Tile & Grout Cleaning/Sealing.** Clean Grout Northwest, regrouting, re-caulking. Cleaning & sealing, ceramic, porcelain, natural stone. Licensed, bonded, insured. Lic#GROUTGN905DJ, 360-621-1730. [cleangROUTnw.com](http://cleangROUTnw.com).

**40% Off Blinds by Graber** Call for Free in-home consultation 360 437-2060. Dana Pointe Interiors, Port Ludlow Village Center [info@danapointeinteriors.com](mailto:info@danapointeinteriors.com).

**Drywall.** New construction, remodels, small repairs, texture removal. 38-years' experience. Local references. 360-344-2590.

**Need help with furniture placement,** wall colors, or remodeling advice? Call Dana Pointe Interiors for in-home Design consultation. 360-437-2060, Port Ludlow Village Center.

**Remodels, Additions, Finish Work & Handyman Services.** Carpenter dedicated in providing quality work for Port Ludlow customers! Licensed, Bonded & Insured. Call Chris Travaglio, 360-434-8999. [THEGREYDOOR.net](http://THEGREYDOOR.net).

**Interior Design & Décor** 15 years professional design experience. Can work within your budget! Call Chelsea to schedule your complementary consultation! 206-669-7443. [THEGREYDOOR.net](http://THEGREYDOOR.net).

**Complex construction project in your future?** Residential/commercial, new development, remodel, public, or private. General Project Management [gpmusa53@gmail.com](mailto:gpmusa53@gmail.com), 360-821-2919. #CC GENERPM866JA.

---



**Custom Window Coverings** Blinds, Shades, Draperies. Competitive pricing, professional services. Call Diane for a Free in- house consultation. Clearview Blinds 360 774-2658, [diane@cvblinds.com](mailto:diane@cvblinds.com).

---

### HOME SERVICES

---

**Certified Home Care Aide in Port Ludlow** Experienced with Alzheimer's, Parkinson's, stroke survivors, developmental and mental health issues. Call or text Rebecca at 360-316-9354.

**House Cleaning by Responsible Couple.** Accepting clients for one-time cleaning. Move-in, move-out, seasonal or whatever you need. 17 years cleaning in and around Port Ludlow. 360-437-9511 or [hardstrom@yahoo.com](mailto:hardstrom@yahoo.com).

**JR Enterprises.** Repair, remodel, small projects and handyman services. General Contractor. JRENT\*831KW. 360-908-4311.

**Sunrise Handyman Services** - Sunrise Home Pros - 844-464-PROS (7767). Call or email [admin@sunrisehomepros.com](mailto:admin@sunrisehomepros.com) for a Free Estimate.

**Professional House Cleaning.** Please call Maria Carmen, 360-301-5975 or 360-302-0909. Email: [arceo.maria@yahoo.com](mailto:arceo.maria@yahoo.com).

**Call Jeremy at All Clear** for your gutter and window cleaning needs. Serving the area for over 10 years. Free bids and reliable service. Licensed and insured. 360-301-6083.

**Stefani's Cleaning Services,** Jefferson County's Top Professional & Reliable Cleaning Service. Licensed, Bonded and Insured. 360-344-8409 [stefaniscleaningservices@gmail.com](mailto:stefaniscleaningservices@gmail.com).

**Olympic Gutter Cleaning & Moss Treatment.** Improving the appearance & life of your home. Call to set up an appointment at 360-301-9980. Licensed & insured.

**Pristine Clean Gutter and Moss Removal:** Commercial and Residential. Tile, Comp, Cedar and Metal rooftops, Gutter repair, Moss prevention plans. Pressure Washing, Siding and Surfaces, Fences. Licensed, Bonded and Insured. Lic# IMMEDRL942PQ. Immediate Results Landscaping. Call: 360-379-2498 or 360-440-2238.

**Pressure washing is our specialty.** Make it look new again with ecoclean pressure washing services! Driveways, patios, decks and more. Give us a call 360-531-4821.

**Labor, moving truck unloading,** strong backs, day labor, landscaping, License and bonded Handyman, hauling, in home furniture moving. [peninsularesidentialservices.com](http://peninsularesidentialservices.com) Several people to help-Chris 360-316-1523.

**Handyman.** Pressure Washing, I use an environmentally Green safe soap. Garbage disposal, Faucet, Light fixture, Ceiling fan and Bath fan replacement. Faulty outlet or Switch replacement or maybe something else? Give James a call @ R&M Services 360-301-2683. Residential Repair and Maintenance Lic# RMSERS\*835B3. Bonded and Insured. [randmservicesrm@gmail.com](mailto:randmservicesrm@gmail.com), Port Ludlow Resident.

**Downsize for Inner Peace.** Personalized solutions for relocation planning, space editing, organizing, private sales of select items, or entire estates. I work with you to honor privacy, reduce stress, and find joy. Licensed, bonded, insured. 508-284-0078. [lisa@lisabmartin.com](mailto:lisa@lisabmartin.com).

**General power washing** - Deck, driveway, walkway, etc. Also, general yard work, trimming, flowerbed, bark, and hauling away. Residential and commercial. I'm licensed. Please call Ramiro at 360-710-7921.

**Sunrise Home Pros, Inc.** Let us keep your home looking beautiful. Exterior painting, roof and gutter cleaning, window cleaning, mildew protection, moss removal, landscaping. Annual maintenance protection programs. Responsive, on-time, A+ BBB rating. Licensed, bonded, insured. 1-844-464 (PROS) -7767, [sunrisehomepros.com](http://sunrisehomepros.com).

**Pressure Washing and Window Cleaning** - Sunrise Home Pros - 844-464-PROS (7767). Call or email [admin@sunrisehomepros.com](mailto:admin@sunrisehomepros.com) for a Free Estimate.

**Window Blind Restrings and Repairs.** Most cases same day service. Give James a call @ R&M Services 360-301-2683, Port Ludlow Resident.

**Moss Removal, Roof and Gutter Cleaning** - Sunrise Home Pros - 844-464-PROS (7767) Call or email [admin@sunrisehomepros.com](mailto:admin@sunrisehomepros.com) for a Free Estimate.

**Home Team Housecleaning.** Hardworking, honest, fast, and friendly young Dominican girl. My desire is to make my clients happy and keep their homes clean. If you need references, just let me know. Please contact Sheryl at 360-860-2774 or [sheryllara@hotmail.com](mailto:sheryllara@hotmail.com).

**Professional House Painting** - Sunrise Home Pros - 844-464-PROS (7767) Call or email [admin@sunrisehomepros.com](mailto:admin@sunrisehomepros.com) for a Free Estimate.

**Blind Repair and Installations** We repair most blinds. Call Clearview Blinds 360-774-2658 for pick up. Or drop off at Dana Pointe Interiors at the Village Center Port Ludlow. [diane@cvblinds.com](mailto:diane@cvblinds.com).

---

### LANDSCAPE & YARD SERVICES

---

**Full Service Yard Care.** Based in Port Ludlow. Mowing, weeding, & more. Excellent references. Call Mike at Soundscape, 360-774-1421.

**Brett's Stump Grinding.** Goodbye ugly tree stumps! I'm professional, reliable, & reasonably priced. For info & to see before & after photos, go to [bretts-stumpgrinding.com](http://bretts-stumpgrinding.com) or call Brett Aniballi at 360-774-1226.

**Field's Tree Care LLC** is a Certified Arborist here to help you with all your tree & shrub needs. Fine Pruning. Free Estimates. Licensed, bonded, insured. Lic # FIELDTC876DH. Dan Field 360-994-0166.

**Immediate Results Landscape:** Aeration, pruning, dethatch, moss control, bark, rock walls, water features, fencing, maintenance. James Caldwell, licensed, bonded, insured. Lic #IMMEDRL942Q. 360-440-2238 or 360-379-2498.

**Artistic Landscape Creations** - Specializing in all facets of landscape construction including landscape design and installation. Please visit our website at [artisticlandscapecreations.net](http://artisticlandscapecreations.net). Licensed, Bonded, and Insured for your protection. Lic. # ARTISLC842DQ. Ken Taylor 360-316-6107.

**Irrigation repair, maintenance and automatic flower bed systems.** Seasonal start up and shut down. Call Wayne 360-643-3114. Email [waynegrassman@aol.com](mailto:waynegrassman@aol.com).

**William's Tree Work** - Felling, removal, storm clean up, view enhancement, habitat creation. Licensed, Bonded, Insured. Lic# WILLITW834DU, 406-599-6868 Will Brinker Owner Operator locally based in Quilcene, [williamstreework.com](http://williamstreework.com).

**Bishops Lawn Mowing and Maintenance.** Brush removal lawn mowing gardening lawn service call 360-301-6930 for Austin or email [Bishopslawnservice@aol.com](mailto:Bishopslawnservice@aol.com).

**Sunrise Labor and Landscaping** - Sunrise Home Pros - 844-464-PROS (7767). Call or email [admin@sunrisehomepros.com](mailto:admin@sunrisehomepros.com) for a Free Estimate.

---

### MERCHANDISE

---

**Marina Market, Poulsbo.** Imported groceries, candy, cheese, beer, pickled herring, tinned fish, mackerel, bacon, sausages, chocolate, black licorice, breads, & cookies from Scandinavia, Holland, Germany, Russia, Bulgaria, Latvia, UK, & Indonesia. [marinamarket.com](http://marinamarket.com). 888-728-0837.

**Copper Penny Consignment** Unique furniture and fabulous finds all available inside Dana Pointe Interiors. 62 Village Way, Port Ludlow Village 360 437-2060.

**Rhododendrons & azaleas.** Blooming, large, ready to plant, assortment of other shrubs and plants. 100s to choose from. \$30 and \$45 each. 151 D Street, Port Hadlock, 360-302-0239.

**Clearview Blinds Sales, Installations, Repairs.** Bonded and Experienced, professional custom services with competitive pricing. Call Diane (formerly, Manager of Dana Point Interiors) for Free consultation. Exceptional references available upon request. 360 774-2658, [diane@cvblinds.com](mailto:diane@cvblinds.com).

**Beautiful outdoor potted plants** large and small including two Japanese maple trees. Also, two indoor orchids in handsome pots. 360-437-0592 Donna.

**Fabulous Finds & Furnishings!!!** Looking for Gently used Furniture, Home Décor and Accessories to purchase or consign in our store? Contact us at 360-437-2060. Stay tuned for exciting new specials and Events!

#### MISCELLANEOUS

**Alcoholics Anonymous (AA) men's meeting** every Tuesday 7:00 p.m. in Port Gamble at the General Store, downstairs conference room, north side of building. Phone Brian at 360-731-8077.

**Clock Repair.** Mantel, wall, cuckoo, or Grandfather's clocks repaired quickly at reasonable prices. Pickup & delivery or house call. Call Father Time at 360-437-5060.

**Let me help you with your sewing needs!** Clothing alterations including hems, waists, mending, repair. Household items like pillows and curtains. Sewing by Jan, located in Port Hadlock. Janice Fischer 360-385-9026.

**Long Arm Quilting.** Let me professionally finish your beautiful quilt on my Gammill/Statler Stitcher. \$150 flat rate for queen size using one of many edge-to-edge patterns. Call Terri 541-390-4048, [creativefinishlaq.com](http://creativefinishlaq.com).

**Guests in Town?** The Old Alcohol Plant offers Executive Suites and a Penthouse. Ask for the Special Port Ludlow, Extended Stay Rate. 360-390-4017.

**Elena's Alterations & Tailoring.** Providing professional seamstress services since 1992. For only the highest quality alterations or tailoring, call Elena today 360-437-9564(h), 206-305-1101(m).

**SemperFiChauffeur.com** Tired of the lack of options getting to SeaTac Airport? Leave your car & your worries locked at home in your garage. Call Retired Gunny, Brent Neel for quote. Best way to start/end your vacation. 206-718-6139.

#### PET CARE

**Big Valley Pet Resort** is a great place for your socialized pet to play while you are away. Check out [bigvalleyanimalcarecenter.com](http://bigvalleyanimalcarecenter.com) or call 360-697-1451 for more information.

**Fido Betta Katta.** Pet-sitting, house-sitting, and dog walking – hourly, daily, and overnight. Licensed, bonded, and insured. Local references available. Call 425-559-1841 or email [fidobettakatta@hotmail.com](mailto:fidobettakatta@hotmail.com) for more information.

#### REAL ESTATE/PROPERTY MANAGEMENT

**Shoreline 2bd/2ba rental condo at Port Ludlow Resort.** Private 32' deck, 5-star view. Comfortably furnished. No stairs. Access to the Beach Club with swimming pools and all its privileges. Photos, Details, and Availability: [vrbo.com/557144](http://vrbo.com/557144), or contact Joyce at 415-806-9416, [joyceapfel@comcast.net](mailto:joyceapfel@comcast.net).

#### RV/BOATING/TRAVEL

**RV Storage.** South Bay, 1 mile west of Hood Canal Bridge on Hwy. 104. Call Shirley, 360-437-9298.

**Beaver Valley Storage.** 100 - 800 square feet. Twenty-four-hour security on duty. One month free with minimum six-month lease. 360-732-0400.

**Marine Dive Service.** Boat maintenance: bottom cleaning, zinc replacement, inspection, and repair. Prompt response. Reasonable rates. Call 360-301-6083.

#### SECRETARIAL AND NOTARY

**Secretarial Services.** Call Cammy Brown, Peninsula Legal Secretarial Services, LLC, 360-301-2590, [cammybrown.org](http://cammybrown.org), for all your business and legal secretarial needs. Transcription, preparation of legal and business documents, typing projects, etc.

**Notary Public:** For Notary Public services call Cammy Brown, Peninsula Legal Secretarial Services LLC, 360-301-2590, located in Kivley Center, Port Hadlock by appointment only.

#### Financial Disclosure The Port Ludlow Voice

The *Port Ludlow Voice* is a 501(c)(4) organization. Its entire staff consists of unpaid volunteers. All writing and editing is done in the homes of staff members on their personal computers. The production editor formats each issue and provides an electronic copy to the printer.

The *Voice* is delivered at no cost to readers on all U.S. Post Office carrier routes in the Master Planned Resort (MPR). As of August 2019, subscriptions are \$30/year or prorated at \$2.50/month.

Financial support for publishing the *Voice* each month comes from advertising, subscriptions and contributions primarily from community organizations. Average monthly income was:

1. Ludlow Maintenance Commission (LMC)	\$200
2. South Bay Community Association (SBCA)	\$200
3. Port Ludlow Village Council (PLVC)	\$200
4. Display Advertising	\$6156
5. Classified Advertising	\$481
6. Subscriptions	\$57
7. Web Advertising	\$47
Total average monthly income in fiscal year 2018/19	\$7341

Donations by *Port Ludlow Voice*:

Port Ludlow Fire and Rescue, Feb. 2019	\$500
Chimacum High School Choir, Mar. 2019	\$300

This issue proofread by Marie Bogan, Ann Gagnier, Carol Riley and Mary Small.

Paper Content: The *Voice* gloss cover stock is balanced recycled FSC certified with 30 percent recycled content. It is elemental chlorine free. The inside stock is acid free and meets the sourcing requirements of the Sustainable Forest Initiative.

©2019 *Port Ludlow Voice*. All rights reserved.

Printed in the U.S.A.

No part of this publication may be reproduced in any form without express written permission of the *Port Ludlow Voice*.

#### Disclaimer

The printing of an article, or of classified or display advertising, does not necessarily constitute endorsement by the *Voice*.



# SEA MARINE

FULL SERVICE BOATYARD

## FULL SERVICE BOATYARD

ABYC Master Technicians • Haul Out Lift  
Canvas Shop • Full Joinery Shop  
Electrical Repower • Plumbing • Painting  
Winter Storage • Provisions

## SYSTEMS SHOW ROOM & SERVICE CENTER

GPS Navigation • Beta Engines • Electronics  
Water Heaters • Heating Systems • Inverters



### BROKERAGE SERVICES

Buying a boat? Selling a boat?  
SEA Marine offers full Brokerage Services.  
Contact Sandy Bakken for a consultation.  
<http://seamarineco.com/yacht-brokerage-listings/>



Sandy Bakken, Broker

*For all your boating needs!*  
**SEA...the difference.**

Point Hudson, Port Townsend  
(360)385-4000 • [seamarineco.com](http://seamarineco.com)

## Bob & Clydene Lloyd Port Ludlow Brokers, LLC

We don't cover 3 counties.

We have lived in Port Ludlow for 28 years.  
We specialize in Port Ludlow real estate and  
our clients who need our help!

Before you sign a listing agreement, call me  
to hear about my ultimate listing package.  
Call Clydene at 360-301-4316

The Lloyd Team  
(360) 301-4316 | [clloyd@olypen.com](mailto:clloyd@olypen.com)  
[www.portludlowbrokers.com](http://www.portludlowbrokers.com)

## Grace Christian Center

*Solid, Spirit-Filled Bible Teaching*

Grace Christian Center is celebrating its 15th year of serving our Lord Jesus here in the Olympic Peninsula. Planted in Port Ludlow, Grace Christian Center is a regional church, with people traveling from all over the County to worship with us. The Bible is our text book—we work hard to bring relevant teaching with an understanding of history, context, and current application in our very real and daily lives.

Grace Christian Center: Where we love Jesus first and foremost; where we love His Word and His presence; where we love His people, where your family can be a family in the presence of the Lord.

We invite you to worship with us Sunday mornings at 10.

Pastors Kevin and Sherri Hunter  
Senior Pastors

360-821-9680

360-821-9684

Port Ludlow Conference Center • 200 Olympia Place, Port Ludlow  
[www.gracechristiancenter.us](http://www.gracechristiancenter.us)

*Loving Jesus and Loving Each Other*

## Medicare Solutions Made Simple!

Need a Consultation?  
Call our office!

**KMi**

Kristin Manwaring Insurance



Kristin Manwaring, Licensed Agent

360-385-4400

[www.KristinManwaring.com](http://www.KristinManwaring.com)

## Ludlow Bay REALTY

Leading And Serving With Excellence



**Kevin Hunter**  
Designated Broker/Owner

Office: 360/437-0800  
[kevinhunter@aol.com](mailto:kevinhunter@aol.com)

[LudlowBayRealty.com](http://LudlowBayRealty.com)

MLS REALTOR SRES

Also the home of Admiralty Property Management







“Plastic and reconstructive surgery is a broad field. Cases in a small community are no different than in places like Seattle. Whether it is hand and wrist surgery, skin cancer reconstruction or wound care, there is a need no matter where the patient lives.”

— JOSEPH MEYERSON, MD

---

Board Eligible Plastic and  
Reconstructive Surgeon

---

Specializing in  
Hand and Wrist Surgery

---

**ORTHOPEDICS**

**Jefferson Healthcare  
Orthopedic Clinic**  
834 Sheridan Street, 2<sup>nd</sup> Floor  
Port Townsend, WA  
360.344.0400

**Jefferson**  

---

**Healthcare**  
[jeffersonhealthcare.org](http://jeffersonhealthcare.org)