

PORT LUDLOW VOICE

Serving the Village of Port Ludlow since 1998

October 2009

Contents:

Arts and Entertainment	33
Bay Club	30
Beach Club	28
Chamber of Commerce	41
Community Meetings	19
Editor's Keyboard	2
Features	2
Golf News	39
Local News	11
Mariners' News	38
Port Ludlow Associates	37
Port Ludlow Village Council	23
Regional News	42
Village Activities	26

Time, Talent or Treasure

by Jen Portz, Contributing Editor

Port Ludlow is filled with folks who put their time, talent or treasure to good use. One such group is the Women's Association of the Port Ludlow Yacht Club (PLYC) who once a year address a local charitable cause. This past year they took on the mammoth task of refurbishing the Olympic Community Action Programs (OlyCAP) emergency shelters.

OlyCAP is a non-profit group providing various services to needy residents of Jefferson and Clallam Counties. One form of assistance is providing interim housing for the homeless or abused in small 425-square foot, two-bedroom, one-bath cabins. As with most charities, OlyCAP's dollars are stretched thin. Remodeling aging cabins wasn't a high priority. Then, purely by chance, Jamie Bima, a PLYC Women's Group member, heard about the cabins and brought pictures of the rundown interiors to the group's fall luncheon, suggesting they take on the job. "We all have stuff in our homes that we're not using and a network of friends who have more," Bima said. The group loved the idea.

As a plan emerged, they knew it would be a huge endeavor. "Most of the residents of these cabins come with nothing; they have small children and are all suffering trauma," Bima explained, "There's a waiting list to get in, so we have to blitz it." That means the women and their spouses have only a week to remove dilapidated furniture and appliances, clean the insides "to within an inch of their life," paint, put down new flooring, build beds, mount sturdy curtain rods, sew curtains, install new lighting fixtures, shelving and mirrors, and add bedding, towels, dishes, silverware and cooking implements. This is a huge task, but they don't stop there. They also add some "non-necessities" of life: stuffed animals and books to comfort the children, art and wreaths to make the places feel like home, microwaves and coffee pots ... even vacuum cleaners.

As of this writing four of the seven cabins have been completed so needy folk can have a second chance. It has been an immense amount of hard work, but the payoff is equally immense. Bima told the saga of a young, homeless family with two small girls who moved into a unit just before Easter. When they arrived the three-year-old, seeing the tidy home, hugged the OlyCAP worker saying, "Oh thank you, thank you!" As the holiday was near, several PLYC ladies filled two baskets with eggs and toys. When the worker delivered them,



PLYC women are refurbishing aging OlyCAP cabins.

**P O R T
L U D L O W
V O I C E
11 YEARS
S T R O N G**

continued on page 2

Feature Articles

From the Editor's Keyboard

by Beverly Browne, Editor

Let's talk about e-mail, that great not-so-new technology that allows you to communicate with any computer user just about anywhere in the world seemingly instantaneously. What a swell invention—except when it isn't. Like any technology, e-mail has its downside.

I am a great fan of e-mail. It's an important tool in getting the *Voice* put together and into the hands of the readers. I would be out of a job without it, a non-paying job, but never mind. What could possibly be wrong with something that serves so many so well and so often? For one thing, there is a lot of it and not all of it is good. There are the eternal jokes, some funny and some not, that get blindly mailed to someone's total address list and clog up the in-box. There are the bits of spam that manage to get through the filter. I am truly sorry for all those guys who need Viagra and similar drugs, but I don't care to hear how by using it they can become sex-machines.

More troubling are the "phishes" that attempt to get my password, my social security number, my credit card numbers and other bits of personal information for the purpose of destroying my hard drive or emptying my bank account. They purport to originate from all sorts of sources including my bank, my stock broker, my Internet server, and strange people living in Nigeria, Ireland, Hong Kong and Saudi Arabia. They want me to help them get money into the United States or escape some plight where they are, for which I will be handsomely rewarded. It is hard to imagine that people fall for these dirty tricks; however, some must because I have received a spate of them recently.

Then there are e-mails from people I do know. Most, but not all, are ones that I want. I could do without the "lay-it-on-the-line" ones that call me names. The fact that e-mail is not a face-to-face communication promotes the dangerous business of "telling it like it is" and blatant deception, often with unintended consequences. One example that comes to mind is the case of a teenager who established an Internet "relationship" with a young man who was actually a rival girl's mother. The destructive interchange between the two ended in the girl's suicide. I don't get these kinds of e-mails but I do get some that can be a little scary.

Some experts have said that 80 percent of communication is non-verbal. When you do not have personal contact, a large portion of the communication is missing and

misunderstandings occur. The recipient lacks cues that modify the verbal input and can't easily probe for better information. This makes it doubly important that senders be very clear about what they are saying and why they are saying it. E-mail users should also remember that e-mail, like plastic, is eternal. It can persist into the future and pop up in the most unexpected places, sometimes to the sender's detriment.

This month's *Voice* contains an article on e-mail etiquette. It is worth a read. (See related article on page 8.)

The views expressed in this column are this Editor's alone and should not be construed to necessarily represent the views of every volunteer member of the Voice staff.

Time continued from page 1

unknownst to anyone, it was the five-year-old's birthday; the basket was her only gift.

PLYC ladies will not maintain the cabins, but they have made some "Starter Kits" with basic bath, bedroom and kitchen supplies for OlyCAP to distribute when residents move to more permanent housing. Though the cabins "may not be left spick-and-span," Bima noted, "there's more of an opportunity now ... and the children deserve to see there's another, more peaceful way to live."

Those with time, talent or treasure can lift their spirits as well as the fortunes of those less fortunate. The last of the cabins still need a small loveseat, ten gallons of paint, someone to install linoleum and small TV/VHS units—there's no cable, but lots of tapes residents can enjoy. OlyCAP is always in need of volunteers and monetary gifts are ever welcome. You can find out more by visiting www.olycap.org.



Maintaining rundown interiors of emergency shelters can't be a high priority for OlyCAP.

Photos supplied by Jaimie Bima



Dogs and cats, getting along.

Courtesy photo

Pet's Peeve or the Cat's Meow

by Fluffy

Really, Port Ludlow! I'm shocked—a dog beauty contest with dog photo displays and fancy ribbons. Why all the attention for such an imperfect pet? Cats are infinitely better than dogs. Sure dogs are always happy to see you. That's because they see you as a giant meal ticket. Cats don't beg at the table while you're trying to eat. If necessary, cats can fend for themselves and catch their own food. Did you ever hear anyone call a dog a "good mouser"?

Cats don't need to be followed around the neighborhood with a demeaning plastic bag and they don't leave yellow burnt-out areas on your lawn. Cats don't try to lick you in the mouth and bring slobbered balls for you to toss again and again. If you give a dog a ball of yarn, they will probably put it in their mouth and slobber on it as well. Cats will play with that ball of yarn and entertain you for hours in the process.

Some dogs run around in circles chasing their own tails like dervishes until their owners call in the "dog whisperer" for help. Did you ever hear of a "cat whisperer"? Cats are so well-behaved that owners bring their cats along on boating and RV trips. When contented, cats purr and they do so at a level that does not disturb the neighborhood.

And that brings me to my pet peeve—barking dogs. Entire websites are devoted to advice about changing this behavior. My favorite is www.barkingdogs.net. It lists the following seven methods for quieting a dog without resorting to no-barking training:

- Electronic Collars / Citronella Collars
- Sound-emitting Collars

- Remote Sound-Emitters
- Muzzles
- Debarking Surgery
- Medication

Do cats need this type of control intervention? The author of the website lists a checklist for traditional no-barking training and warns not to use traditional no-barking training on vicious dogs. Did you ever hear of a vicious house-cat? While a "dog's bark" is a nuisance, we all know that the "cat's meow" means something extra special!

Bothersome Barking

by Suzanne Cunliffe, Contributing Editor

Do you (or your neighbor) have a dog that barks more than you would like it to? I talked to Georgia Towle from The Lucky Dog Training Center in Chimacum for some tips on how to understand why the dog is barking and how you can control it.

According to Georgia there are three primary types of barking—alarm, demand/excitement and boredom. Your task is to determine which kind of barking your dog is doing and then be persistently consistent with behavior modification techniques.

Alarm barking is triggered by any perceived threat. You don't want to stop alarm barking altogether; there may be a good reason for it, but to control it acknowledge it with the words, "Good watch dog. That will do." Then lead the dog away from the door with a high value treat, such as meat or cheese, to a predetermined spot. Consistency will teach the dog to stop barking and run to its "spot" when they hear the words, "That will do."

Demand/excitement barking happens when your dog wants your attention. It can happen when you come home from work. To stop this kind of barking you must ignore the dog. Do not look or talk to your dog until they are quiet for at least three seconds. Then say, "Good, quiet, dog," and give him attention. If the barking starts up again, turn away from the dog until he is quiet.

Boredom barking occurs when a dog is left alone for long periods of time. This can be annoying for yourself and your neighbors. Dogs get lonely if left outside. Bring them in if you can, but if you cannot, be sure to give them plenty of exercise before you put them in the yard. As Georgia says, "A tired dog is a good dog." Interactive toys such as a Kong filled with treats or an occasional marrow-bone also can work to keep your dog busy. If the problem dog lives next door, it's up to you to find a tactful way of passing on this information!

This Year's Flu: Preventative Actions

by Art Zoloth, Pharm. D, Vice President, Port Ludlow Village Council

The 2009 flu season is unique because we are faced with two variants of influenza. The strain getting the most press is the novel H1N1 or swine flu. The other type is called the seasonal flu. The Centers for Disease Control and Prevention (CDC) recommends the following three steps to combat the flu.

First, and most important, take time to get vaccinated. The seasonal vaccine will not protect you against H1N1. Vaccination is especially important for people at high risk for serious complications, including young children, pregnant women, people with chronic health conditions such as asthma, diabetes or heart and lung disease and people 65 years and older. The priority population to receive the H1N1 vaccine is:

- Pregnant women
- People who live with or care for young children
- Health care and emergency medical services personnel
- Persons between the ages of 6 months and 24 years
- People from ages 25 through 64 years with chronic health conditions or compromised immune systems.

Older adults seem to have some immunity to the current H1N1 flu virus. Data have shown that H1N1 is more likely to infect school-age populations. Those eligible to receive H1N1 may be able to receive both vaccines at the same time. The major contraindication to vaccination is an allergy to egg protein.

Second, take preventative actions. Cover your nose and mouth when you cough or sneeze. Wash your hands often with soap and water, especially after you cough or sneeze. Avoid touching your eyes, nose or mouth. If you are sick with flu-like symptoms, the CDC recommends you stay home at least 24 hours after your fever has gone (except for needed medical care). While sick, limit contact with others to keep from infecting them.

You can become infected by a flu virus when an infected person coughs or sneezes droplets near you and you take in the virus through your mouth, nose or eyes. You can also get the virus by touching a contaminated surface such as a countertop or doorknob, and then touching your mouth, nose or eyes. This is why hand washing is so important!

Third, take flu antiviral drugs if recommended. Flu antiviral drugs such as Tamiflu and Relenza require a prescription from a doctor. CDC guidelines recommend

that antiviral drugs be used to treat people who are sick and at a high risk for complications. The guidelines were issued to avoid overuse of these agents because a virus can develop resistance, making the drugs ineffective. Drugs work best if started within two days of symptoms. Antiviral drugs can make your illness milder and make you feel better faster as well as prevent serious complications. If you have specific questions, check with your health provider.

Jefferson County Public Health has been notified that they should receive federally supplied H1N1 vaccine by mid-October. The vaccine that is currently available is the seasonal flu vaccine. Plan on getting the seasonal vaccine as usual. For those on Medicare the annual flu vaccine is a covered benefit. Insurance coverage may vary. For those without any medial coverage the fee is usually \$25.

Vaccinations are being given at the following sites this year. Phone ahead to confirm stock, check wait time and avoid disappointment.

- Madrona Hill Urgent Care, 9481 Oak Bay Road, Port Ludlow, 437-9990
- QFC, 1890 Irondale Road, Port Hadlock, 385-1900
- Safeway, 442 West Sims Way, Port Townsend, 385-2860

Unethical Salesmen Targeting Ludlow

by Beverly Browne, Editor

Port Ludlow residents have been the targets of unscrupulous magazine salesmen recently. The *Voice* has learned that at least two families in North Bay were the victims of deceptive selling from these sales crews who convinced the victims that the magazines would be sent to service-men overseas. The company for which the crew worked was Atlantic Circulation, Inc., the same company whose crew dumped one of their members, lost and penniless, near the Bay Club earlier this summer.

Thousands of solicitors—mostly ranging in age from 18 into their early 20s—are induced to join door-to-door sales crews by promises of seeing the country, partying and making big money. In reality they work under the control of handlers who pay them a small amount based on daily sales. They peddle subscriptions door to door for 10–14 hours a day, travel in unsafe vehicles, sleep in cheap motels or vans and are often without basic necessities. Although they are promised commissions and signing fees, their earnings are kept on account for later payment that they may or may not get. They may be

continued on next page

Salesmen continued from previous page

beaten by their managers if they complain or simply left by the roadside thousands of miles from home.

Besides violation of city ordinances against peddling, crews have been involved in other more serious crimes, some of them violent. Numerous reports document cases of drug use, assault, burglary, sexual exploitation and murder across the country. One Ohio magazine solicitor was accused of choking his girlfriend at a Holiday Inn. He was first charged with attempted murder but the woman declined to cooperate with authorities because she loved him. Use of deceptive sales practices is the tip of the iceberg; it is a national scandal.

Who are the firms involved in these travesties? They include publisher's clearing houses, one of which is Atlantic Circulation, Inc. They go by a variety of names, Dynasty Sales, United Circulation, Paragon Sales, Paragon Management and others. Clearing houses handle the paperwork of transmitting completed orders to publishers; they do scanty background checks on their crews, if they do any at all. The publishers are complicit, too. Although they claim they simply contract for sales with clearing houses, they know of the shady practices. In the end all parties blame the others in a virtually unregulated industry. For more information on magazine sales scams look up "youth field sales alert" on the Internet.

Buying a magazine or any other product from an itinerant salesman is dangerous for buyer and for seller. Even if the salesperson looks clean-cut and pleasant, don't do it. You may not get what you purchased and you will be abetting questionable activity.

Train and Bus to Whistler

by Diane Ruff, Contributing Editor

Recently we planned four days in beautiful Whistler, B.C., a few hours from Vancouver and home to the 2010 Winter Olympics. I made Amtrak, bus and condo reservations after checking www.tripadvisor.com, a site featuring travelers' accommodation experiences.

Park in Kingston and take the ferry to Edmonds; the Edmonds train station is a short walk from the ferry. Seat assignments to Vancouver are not given, but seats on the waterside allow views of the pristine beaches and occasional sea animals. Passports or enhanced drivers licenses now are needed to and from Canada.

Amtrak disembarks one car at a time in Vancouver. We were the last three people to disembark and the customs line extended ahead of us forever. My travel companions

voted me "Most Likely to Get Immediate Help," so I found the conductor. Hearing that I had allowed one-and-a-half hours to get through customs, eat lunch and make the bus, but now had only 30 minutes to accomplish that, he graciously reopened the Bistro. We purchased boxed lunches; then he escorted us past the other 272 people to the front of the line, through customs and over to the bus line.

We spent a very rainy, but pleasant weekend overlooking bikers racing down the muddy hill, then walked around the Village shops, and enjoyed chair massages. Our excitement wasn't over yet.

The final day was unforgettable! I discovered that someone had torn off the wrong bus/train tickets. I had receipts and stubs with our names, but they were worthless. We were told we'd have to purchase duplicate tickets. After becoming fast friends with Scott, Paul, Joe and Sam at the Amtrak station, we were allowed on the train without double paying. My advice is always check which tickets are torn off and which are remaining.

I loved the coastal train and Whistler. However, my next trip to Whistler will find me monitoring my tickets carefully and not staying at The Village overlooking the restaurants and bars where the good times roll until 2:00 a.m.

Send your favorite get-away to dianekayr@aol.com. We reserve the right to edit your contribution to fit our style and space constraints.

Health Care: Dialog of the Deaf

by Stephen Cunliffe, Contributing Editor

In late August I went with my wife to the Town Hall Meeting held in Port Townsend by Congressman Norm Dicks. Partly out of interest in the topic itself, but also because I wanted to see how this meeting would compare with other open town halls, much publicized in the national media, that had turned into nothing better than hostile shouting matches.

So on a lovely late summer afternoon we walked into the Commons at Fort Worden. The path to the doorway was lined with people politely and quietly holding placards. Some were for and some against the yet to be completed Health Care Reform Bill, but their topics were broader than that. There were written calls for both Congressman Dicks and several members of the current administration to quit their jobs, concerns about the wars in Iraq and Afghanistan, and a plea for the interests of farmers and fishermen. The most interesting of all signs was in the lobby, reassuringly stating "no weapons allowed in the meeting."

continued on next page

Health Care continued from previous page

We were not alone in being interested; the meeting was packed. Members of the audience came from a much broader area than Port Townsend. Other Ports were represented: Angeles, Hadlock, Orchard and Ludlow, but the single largest contingent appeared to come from Sequim. Probably 80 percent of the total audience was over 55, an exaggeration of our local demographics, probably due to the fact that at 4:00 in the afternoon it would be difficult for younger people with jobs and children to attend. We arrived 20 minutes early and yet were some of the last to get in. The doors soon closed, allowing the meeting to actually begin 10 minutes early.

An introduction was made by a member of the non-partisan League of Women Voters, who hoped for a “good and civil discussion.” Congressman Dicks made his opening remarks, outlining his case for health care reform on a national basis, as well as doing his local duty by pointing out some Medicare funding inequities for the State of Washington. These remarks lasted 15 minutes and were uninterrupted. So far, all was indeed very civil.

Cat calls and boos began immediately as the Congressman began to respond to questions or statements from the floor. These were hardly civil but did not disrupt the flow of the meeting. I kept a count of the apparent position of the people who spoke from the floor. Were they generally supportive of the bill, even if some thought it not radical enough? Were they generally opposed to the bill? Or was the point they made neutral in its origin? The count was surprisingly even. Twelve questioners were generally supportive, 13 were definitely negative, and 10 were neutral. Both supporters and the opposition were able to make emotional appeals to their own side. One lady who supported reform told how, as a self-employed person, she could not afford health insurance and lived in continuous fear of falling ill. Another lady, from the opposite camp, used her broad experience of living in many parts of the world to explain her equally moving fear of the “tyrannical dictatorship” by which she now felt threatened. Those who shared her point of view were also highly vocal on the subject of illegal aliens and their undeserved use of our national health care resources.

How well did the proceedings match up to the desire for a “good and civil discussion?” At the end of the session Congressman Dicks heaved a sigh of relief and said, “That was lively!” And lively it certainly had been, but only once was the meeting really brought to a halt by interruptions; fortunately the other side had the composure not to respond and proceedings soon carried

on. As for discussion, there really was none. Instead we just heard the sometimes rather forceful expression of apparently irreconcilable points of view. Sadly, politics continues to be more bi-polar than bipartisan.

From the Commissioner's Desk

by John Austin, County Commissioner

I saw many of our Port Ludlow residents last month at a dinner for Block Captains and Community Emergency Response Team (CERT) volunteers. One of the guests in attendance was Bob Hamlin, Director of the County Department of Emergency Management, which operates in conjunction with the City of Port Townsend. His staff consists of two half-time employees and a team of at least 25 volunteers. He is located at the County Emergency Operations Center (EOC) or at the alternate EOC in Port Townsend. The EOC is literally and figuratively low profile in a sturdy concrete structure adjacent to the County Jail. Within the building are meeting rooms, a communications center, supplies and the Jefferson 9-1-1 Center. There is an emergency generator with enough diesel for two weeks and a three-day supply of food and water.

About once each month, Bob activates the Incident Management Team (IMT) and the EOC fills with a mixture of volunteers, county and city staff. Representatives of the Treasurer's office, the County Engineer's staff, Sheriff, City Police, City Emergency Management, a County Commissioner and the Health Department are present. Bob Helander, a Ludlow resident, from the local Red Cross is often in attendance. Owen Mulkey, also from Ludlow, has been a long-time member of the IMT.

The Communications Center is in contact with a ham radio network with at least 35 additional volunteers. The EOC has access to five direct emergency radio channels to maintain contact with the State EOC. Close coordination is maintained with over 42 agencies including the State Military Department, the Navy, American Red Cross, OlyCAP and the State Patrol.

If, by chance, you should encounter Bob or any of his staff, do thank them for the preparations they have made for our safety. And do thank our dozens of Port Ludlow Block Captains and ham radio operators for their commitment to the community.



John Austin, County Commissioner
Voice Photo Archives

The Ajax Café

by Suzanne Cunliffe, Contributing Editor



Sam Hadlock's former residence is home to the Ajax.

Courtesy photo

The first time we went to the Ajax Café, it was crowded with diners who were wearing hats and clapping to the music of that night's entertainment. There was dancing in the aisles. We sat next to a Seattle couple who were celebrating their wedding anniversary, just as they celebrated it 24 years before, and every year in between, at the Ajax.

A humble, red and white sign on Oak Bay Road and Waters Drive announces the Ajax Café; it can be easily overlooked, but oh, what you would be missing. The restaurant is actually the Galster House, built in the 1880s; it was once home to Samuel Hadlock, founder of the town. Now it has a comfortable, fun atmosphere with furniture and dishes that don't match, food that is fresh and locally grown, a good selection of wine and beer, plus a great collection of hats.

Entertainment is scheduled Friday, Saturday and Sunday nights, though we have been there other nights when someone "volunteers" to play for the house. The music is generally local talent that is never too loud or too oppressive, though there has been more than one time that we stopped whatever we were doing just to listen and admire.

Last week our daughter had the roast chicken, while my husband enjoyed the Dungeness crab manicotti and I had the rack of lamb. Our meals were prepared well, served promptly, and attractively presented. We have consistently found the food to be creative and tasty.

And last, but far from least, is that all six of our (theoretically adult) children ask to go to the Ajax Café whenever they honor us with a visit. You would do well to follow their lead...choose from the menu and select your hat.

Open for dinner Tuesday through Sunday at 5:00 p.m.
Closed Mondays.

Ajax Café

21 N. Water Street
Port Hadlock
360-385-3450
e-mail: info@ajaxcafe.com

"Eating Around" wants to hear from you. Send us news on your favorite eating places – any places you've had a pleasant – or not – eating experience within an hour's drive from Port Ludlow. Send your comments, criticisms, conclusions and compliments to Marti Duncan, "Eating Around" Editor, at martiduncan@q.com. Note: we reserve the right to edit your contribution.

Lower Rainier Loop Trail

by Soosie Darrow, Trails Committee Scribe

The Lower Rainier Loop, which begins at the corner of Swansonville Road and goes up to Rainier Lane, was instigated by Ollie Gardner who lived on Resolute, which backs up to that Greenbelt area. He really wanted a wide, strolling trail for old folks but he didn't get it due to the terrain! It is, in my opinion, the nicest trail in Port Ludlow.

The idea for this trail was initially presented to the Trails/Natural Resources Committee in January 2003, but had been discussed by the Ludlow Maintenance Commission (LMC) Greenbelt Committee prior to that. I don't remember all the helpers—but Tom Carter, Dan Darrow, Tony and Alayne Goods, Adele Govert, Stan Gustin, Dean Morgan, Jack Rikken, myself (Soosie Darrow) and many others were all there for many days working with Pulaskis, McLeods, machetes and shovels. (Of course some would say that the trail is not yet "finished" since there are still drainage problems!)

There was much negotiation to get permission for the trail between the LMC Greenbelt Committee, Marge Carter, Ollie, neighbors, the Drainage District and others prior to the launch of work parties. Originally the Drainage District required 48-inch culverts in four locations. Ollie researched and procured the special troll bridge and somehow the culvert idea went away. Ollie often treated us all to hot dogs and beer on his patio after working. We were, therefore, going to name the trail Ollie's Cantina Trail but in the end decided we shouldn't name the trails after people. Although the trail was deemed finished in August 2003, it wasn't officially named the Rainier Loop until October of that year.

Cost is among other ancillary information that may be of interest to some. The original cost was estimated to be several thousand dollars plus the 48-inch culverts. The actual total cost was about \$850.

E-mail Etiquette

by Jen Portz, Contributing Editor

When covered wagons roamed the frontier it could take months for a letter to arrive. Today you click a button and your thoughts are waiting to be read a continent away! But as with anything, there's a boon and a bane to this new Internet frontier. Virginia Shea, in her book *Netiquette* notes, "When you enter any new culture ... you're liable to commit a few social blunders." Some easy rules can help.

First, just because you received an e-mail, doesn't mean it's the best method for responding. Consider your intended goal. Do you want retribution? Do you seek to praise a job well done? If the latter is your goal, e-mail works wonderfully, but for criticism it is much less effective. Critical e-mails can offend to the point where the recipient misses "your" point. Michael Hyatt, an expert on leadership, productivity, and social media notes, "In the heat of the moment, I have written some brilliant replies. I have said things in writing that I would never have the guts to say face-to-face. This is precisely why you should never "ever" fire off an e-mail in anger. They almost never serve their purpose or your long-term interests." Using the phone or walking across the street might be a better choice...and give you a moment to cool off.

If e-mail is appropriate, remember you are not dealing with an inanimate plastic box. Another human being with feelings and foibles will read your message. Respond responsibly. Stand up for yourself, but be mindful of your tone. Keep jokes, witty remarks and sarcasm to a minimum. E-mail recipients don't have the benefit of seeing an expression or hearing pitch, tone or inflection to help decipher a message's meaning.

Consider who you are sending your e-letter "To" and who you are "Cc-ing." The more people you send an e-mail "To," the less likely any single person will respond, much less perform a requested action. Use the "Reply to All" button sparingly. Cluttering an "Inbox" diminishes the very communication e-mail is trying to facilitate.

Use standard spelling, punctuation, and capitalization; all lower case is difficult to read, as is SCREAMING IN ALL CAPS—which is considered quite rude! Avoid acronyms, or define them at their initial use. Make your most important point first and write clear, short paragraphs. If you have a question, provide options; for example instead of saying, "When should we meet?" suggest three meeting times. This will eliminate the "ping-pong" of back and forth e-mails that also clog inboxes.

Weigh carefully where and on what device your e-mail will be received. Internet-capable phones have a limited ability to handle long messages or large attachments. Include a meaningful "Subject" line. If you need to discuss more than one subject, send multiple e-mails. This will make it easier for recipients to prioritize what they open or search for a letter later. If you must send a large attachment, first send a separate e-mail explaining what will come next and noting the file's size.

Avoid sending chain letters. Check the accuracy of forwarded warnings by visiting a "myth buster" site such as www.snopes.com. Be wary of libelous, defamatory, offensive, racist or obscene emails; forwarding them could put you at risk of a lawsuit—even if you are not the original author. Remember, e-mail messages are neither private nor anonymous; your words live forever and are easily forwarded.

Finally, a pause before hitting the "Send" button can eliminate reams of remorse. First, double-check who is receiving the letter. Many e-mail providers automatically finish e-mail addresses; make certain you haven't mistaken one "Keith" for another. Take a moment to carefully re-read your e-mail aloud—your ears will catch missing words and sarcasm. While you're doing this consider *Boston Globe* Columnist Donald Murray's advice, "One of the hardest tasks of the writer is to read what is on the page, not what the writer hoped would be on the page." And always remember the Golden Rule: E-mail to others as you would have them e-mail to you.

Mining Company Will Hold Public Meeting

by Jen Portz, Contributing Editor

In early September Iron Mountain Quarry (IMQ) and Pope Resources Inc., (PRI) met with Board members from the Port Ludlow Village Council (PLVC) and South Bay Community Association (SBCA). During this meeting the companies' positions regarding IMQ's New Shine Quarry (NSQ) were clarified. (For additional details, see the Iron Mountain Committee report on page 24 in the PLVC section of this issue.)

Some additional facts that came to light in the meeting included information that the primary market for the rock will be in Kitsap County. The rock will be transported to market via standard-sized trucks over the Hood Canal Bridge. Rock trucks will not travel through Port Ludlow except for local deliveries. IMQ estimates that Shine Quarry's rock will be depleted in seven years during which time the two companies will be in competition.

continued on next page

Meeting continued from previous page

IMQ anticipates mining will commence in late 2011 or early 2012.

The plan is to work the mine in 20-acre increments by taking down the ridge in “benches” using computerized and advanced technology. Mining also will be conducted in buffer zones and the ridge between the mine. Community members had hoped that the company would agree to spare the protecting ridge separating Port Ludlow from the mining operations. That will not be the case.

To further explain their positions IMQ and Pope Resources (PRI) spokespersons will hold a joint, two-hour public meeting that will be open to residents of Port Ludlow and the surrounding community. One hour will be devoted to presentations; during the second hour the companies will take questions from the audience.

Members of the PLVC Board have noted that because of the outcome of challenges in the courts, the voice of our community will be our most effective defense. Please plan to attend the IMQ-PRI public meeting at the Bay Club on **Wednesday, October 14**, from 4:00 to 6:00 p.m.

Guardian Angels for Soldiers' Pets

by Barbara Berthiaume, North Bay Editor



Veronica and Chuck with foster pets, Roxie and Sasha.

Photo by Peggy Lee Flentie

Guardian Angels for Soldiers' Pets was formed in January 2005 because of a growing need by a number of military personnel deployed to places where it was not possible to take their pets. If a pet owner is unable to find someone to care for his or her pet, the only option is to relinquish the pet to an animal rescue shelter or humane society with the knowledge they would never see their pet again.

The goal of this organization is to support the military service members, veterans and their beloved pets to ensure the pets are reunited with their owners following deployment or emergency hardship. This is achieved through the Military Pet Assistance Program that addresses financial costs of pet care, the Military and Veteran's Sanctuary (MVP) Program that develops special places for pets if there is no approved foster care at the time of deployment, and the Foster Care Program which consists of the “Guardian Angels,” volunteers who are acting as foster parents to the pet until the military owner returns.

A Port Ludlow couple, Veronica Heath and Chuck King, moved here two years ago from California where they were very active in animal shelters and rescue care. They both have a family background of interest and service to the military and always have had large dogs in their lives. The transition of coming from a six-acre residence where their dogs roamed freely to Rainier Lane made them hesitate to commit to another large dog. They were looking for something short term and Guardian Angels for Soldiers' Pets filled this need. Veronica went online and applied to be a foster parent and was guided through the necessary paperwork by the organization.

Applicants are carefully screened to insure that the pets are in a safe and secure environment, as adapting to a new home and new people can be a traumatic experience. In this particular situation, one partner was already deployed to a combat zone and the other spouse found suddenly that he also was being deployed. Alternate plans for care of the dogs fell through and Roxie and Sasha were in desperate need of a home. Through the Guardian Angel for Pets' program, the owner met with Veronica and Chuck and they mutually agreed upon a foster arrangement. The owner has recently visited his pets before deployment and feels assured that they are in good hands. Roxie and Sasha now can be seen walking up and down Rainier Lane with their Guardian Angels.

Chuck and Veronica feel very strongly that supporting our troops is more than a bumper sticker. Being a guardian angel is a commitment and responsibility and can be a very rewarding experience in providing a much needed and personal connection in supporting the military. For further information on this program, you can go on-line to guardianangelsforsoldierspet.org, call their information number 501-325-1591 or contact Veronica and Chuck at 437-4062.

Advice about Heart Attacks



Two aspirin can save your life.

Dr. Virend Somers, a cardiologist from the Mayo Clinic and lead author of a report in the July 2008 issue of the *Journal of the American College of Cardiology*, says that most heart attacks occur in the day, generally between 6:00 a.m. and noon. Having one during the night, when the heart should

be most at rest, means that something unusual happened, perhaps related to sleep apnea. Aspirin can save your life. It lasts a really long time in your medicine chest, years. When it gets old, it smells like vinegar.

He offers the following advice: If you take an aspirin or a baby aspirin once a day, take it at night. The reason is that aspirin has a 24-hour "half-life." Therefore, if most heart attacks happen in the wee hours of the morning, the aspirin would be strongest in your system if taken at night.

It is important to always have aspirin in the home. Keeping it at your bedside is wise. If you believe you are having a heart attack, dissolve two full-strength aspirins in your mouth and swallow with a bit of water then phone 9-1-1. Also, call a neighbor or a family member who lives very close by, state "heart attack" and tell them that you have taken two aspirins. Take a seat on a chair or sofa and wait for their arrival. Do not lie down!

The majority of people, about 60 percent, who had a heart attack while asleep, did not wake up. However, if one occurs, chest pain may wake you up from your deep sleep. There are other symptoms, however, of a heart attack besides the pain in the left arm and chest. One must also be aware of an intense pain on the chin, as well as nausea and lots of sweating. Women are more likely than men to have symptoms other than chest pain.

October Dates to Remember

- Fri., October 2** Artists' League Artist of Month Show Opening Reception for Penny Sanzaro (Open)
- Sat., October 3** Performing Arts in Port Ludlow Opening Night Party and Concert: "Franc D'Ambrosio's Broadway" (Open)
- Wed., October 7 – Sat., October 10** CERT and PLF&R Four-Day Training Course (Open)
- Wed., October 14** Iron Mountain Quarry (IMQ) / Pope Resources Public Meeting (Open)
- Wed., October 21** Artists' League Encaustic Demonstration by Guest Artist (Open)
- Thurs., October 22** "Out to Breakfast or Lunch" with CEA at new Oak Table Café, Kingston (Open)
- Fri., October 23** Olympic Peninsula Bluebills Annual Oktoberfest Party (Open)
- Sat., October 31** Happy Halloween
CEA "Trunk-A-Treat" for Children and Adults (Open)

Note: (Open) indicates anyone in the surrounding area is welcome.




Thinking Surgery? Think Again

Call 437-2596 and see if you are a candidate for our cold laser therapy program.

**No cutting, No drugs, No side-effect, No time loss.
Begin the healing process today and get your life back.**

Marjorie Pederson DC
Serving Port Ludlow Since 1995

WEBER'S WINDOW CLEANING SERVICE



RESIDENTIAL • COMMERCIAL • NEW CONSTRUCTION
FREE ESTIMATES • REFERENCES

Let us help you with your window "panes".

360-437-1131

RON WEBER-OWNER

We Clearly Make
A Difference!

Insured • Licensed • Bonded

Local News

Port Ludlow Days Reprise

by David Goudie, Port Ludlow Days Communications



Unidentified children check out the sweet treats.

Photo by Audrey Kay

Port Ludlow Days 2009 is over and done. The event ran from Tuesday, August 11 through Sunday, August 16 and was a Port Ludlow Funfest on steroids lasting for six days rather than the two days of previous Funfest events. With raffles, prizes, activities, music, arts and crafts, displays and demonstrations, best dog photo contest and more, there was something for everybody. If you didn't find something of interest, you just weren't trying.

The Golf Tourney kicked-off the week with a participation of 72 golfers and by all reports was great fun. A sincere thank you goes out to Bill Browne, John Cragoe, Vito DeSantis, Craig Henderson and Chris Whitehurst for coordinating this successful event.

Wednesday and Thursday were for hikers with 33 participants on Wednesday and about 24 people and one dog named Bruno on Thursday. Prizes were awarded in the form of refrigerator note magnets and memorabilia with Port Ludlow Days logos, handmade by Heather Ullmann.

Thursday evening's event was "Hot August Night" featuring the Choral Belles, The Flashes and The Firemen, the Port Ludlow Singers and the Port Ludlow Village Sounders. This musical event attracted a large audience and random comments were highly complimentary.

The event for Friday was Friday Market. Throughout the season the market has grown in size—both in the variety and number of vendors and in the number of visitors.

Port Ludlow Days conclusion on Saturday and Sunday included several events in the area surrounding the Harbormaster restaurant. The vendor area was filled with booths selling everything from works of fine art to hand-made custom wood furniture along with great food and wine served up by Paul Wolman and Chef Dan of The Inn and The Fireside. Entertainment included singing by the Port Ludlow Sounders, Hawaiian dancing led by Bernie Robinson and songs by Charlie Ferris.

Port Ludlow Fire & Rescue (PLF&R) and the Jefferson County Sheriff's Department combined their exhibits and demonstrations. Fire Chief Ed Wilkerson and Sheriff Tony Hernandez were very pleased with the turnout of public support. Chief Wilkerson noted that the car rescue demonstrations were a real hit with onlookers while the Sheriff's department provided fingerprinting of children.

A Coast Guard Cutter was at the Marina on Saturday and gave tours and descriptions of its day-to-day duties and lives as Coast Guardsmen (and women). A thank you goes out to the Seattle District of the U.S. Coast Guard for its presence and service to our community and country.

Gene Carmody and his crew coordinated two Car Shows throughout the weekend. (See the related article on page 13.) Raffle and contest prize winners were announced on Sunday. (See related article on page 13.) Each raffle, contest or tournament was very successful in turnout and community support.

The Port Ludlow Dog Photo Contest must get a special mention due to the number of participants and the reality of the number of dog owners in our community. Over 50 dogs were entered, all winners, but there can be only one Top Dog in Port Ludlow. (See related article and picture on page 13.)

Port Ludlow Days was a community celebration put on by you, your friends, your neighbors and children. To list all who made this event possible is impossible. If you want to know who participated in making this community event such a success just ask people around you. They had a hand in it.

Join the fun: Watch the *Voice* early in 2010 for a call for volunteers and ideas. Help make Port Ludlow Days 2010 an even better community-wide event.

Artist of the Month

Penny Lou Sanzaro is the Port Ludlow Artists' League Artist of the Month for October. She works in a variety of media, but concentrates on watercolor painting. Receiving her Bachelor of Arts in Fine Arts from California State Long Beach, Penny worked in the printing industry and government as a graphic artist and technical illustrator until she retired in 1998.

Having studied with nationally-known watercolor artist Nancy Collins, Penny credits her with giving her confidence in the use of watercolor. She enjoys painting a variety of subjects in realistic, impressionistic and non-representational styles. Her work has been displayed in many local businesses, private clubs, medical offices and cafés in Jefferson and Kitsap Counties. She was accepted into her first juried show at the Kitsap Arts and Crafts Fair in 2007 with her painting, *"This Joint is Jumpin'."*

A reception for Penny's exhibit will be **Friday, October 2**, from 4:00 to 5:00 p.m., at American Marine Bank and from 5:00 to 6:00 p.m. in the League's Art Gallery next door.

Other Artists' League members' work can be seen at the following Port Ludlow businesses: Bob Jamison, oils, at Coldwell Banker; Connie Glaser, watercolors, in the American Marine Bank conference room; Wanda Mawhinney, mixed media, at Madrona Hill Urgent Care; Harry and Franci Gronewald, photography and oil, at Active Life Physical Therapy; Marti Lewis, various media, at Home Instead Senior Care; and Ann Arscott, oils, at Oracle Financial and Insurance.

Ludlow Village Players Announce Auditions

by Vallery Durling

Mark your calendars! Ludlow Village Players (LVP) are gearing up for a **March 2010** production, and dates for the auditions are set:

- Beach Club: **Tuesday, November 17**, 6:00–9:00 p.m.
- Bay Club: **Thursday, November 19**, 5:00–7:30 p.m.

What's missing? The name of the play! It's a mystery! The LVP Advisory Committee has been reviewing plays since May and has narrowed the field to three. We have concentrated on murder mysteries and comedies, our most important criteria being entertainment value for you, our audience. The final decision has been made but not in time for the deadline for this article. You can check our epod at portludlowtoday.com for that information anytime after **Friday, October 1**.

Audition packets, including a list of characters and play synopsis, will be available at both the Bay and Beach Clubs beginning **Thursday, October 15**, and posters will show up around town about the same time.

We need you! In addition to actors, it takes a great crew to put on any production. If you are interested in acting, lighting, sound, props, costumes, make-up, publicity or just becoming a part of the process, please contact Val Durling at 437-2861 or rkd@waypoint.com.

More hands make light work and it is lots of fun to boot. We guarantee it! Rehearsals begin the first week of January and production crew gets underway in February. Performances will be at the end of March at the Beach Club. Try it—you'll love it!

The Price of Safety

by Beverly Browne, Editor

Recently a number of residents received an invitation to a free dinner at The Fireside. The catch was that we had to listen to a safety presentation before getting fed. Attendance was good because people in Port Ludlow will do a lot for a free dinner. Listening to somebody talk doesn't seem like much.

The presentation was about fire alarms and how important they are for your safety. (We all buy that.) But the group was also selling some systems that they claimed were much better than the shoddy equipment we all rely on. They presented some statistics and showed some houses on fire. Their detectors were, according to the marketing people, the Cadillac of fire alarms. You could sleep easy with these in your house. The price was pretty big too.

The presentation struck a sour note with alert and skeptical Marianne Hauptmann. She went home, "googled" the outfit, and reports that the several companies running these scams are all engaged in a Grade A rip-off. If you really want to get taken to the cleaners, you can buy a "Full Protection" system for around \$4,000. Unfortunately, there isn't any really good evidence that it works any better than cheaper systems.

It seems like all we have done recently is report on people trying to rip other people off. Now we have folks trying to scare the pants off of us about dying because of our pathetic fire alarms. Is nothing sacrosanct?

Port Ludlow Days Car Show

by Gene Carmody, Port Ludlow Days Car Show Chair



The two Port Ludlow Days Car Shows were a highlight attraction. The first on Saturday, August 15 featured three local car clubs—the Glass Odyssey Corvette Club, Olympic Peninsula Porsches Club and the Rakers' Classic Car Club.

The second on Sunday, August 16 was set aside for Port Ludlow residents. This venue added to the variety of activities of this year's event. After attendees visited the vendor booths, enjoyed musical entertainment and ate some tasty food, they strolled down the hill behind the Harbormaster to look at showroom quality cars.

The Rakers' displayed custom coupes and roadsters from as far back as the 1920s. The Glass Odyssey Corvettes featured cars from the 1960s to present. The Olympic Peninsula Porsches presented a 1956 Speedster to a new Targas. Port Ludlow residents brought out an Aston Martin Vantage, a 1957 T-Bird, several Porsches and Corvettes. There were 37 cars registered on Saturday and 13 on Sunday. Thanks to all the car participants and enthusiasts, the event was a success. Thanks go to all the sponsors and donors.

Car show trophies were donated by the Choral Belles, Community Enrichment Alliance (CEA), Hot Flashes, Knit Wits, Port Ludlow Book Club, Port Ludlow Garden Club, Port Ludlow Yacht Club Women, 9-Hole Women Golfers, 18-Hole Women Golfers and Yolates.

Car show raffle prizes were provided by Bloomers Landing, Ferino's Pizza, Snug Harbor Café, Valley Tavern, Sonja's Bayside Barber, Pedro's Fiesta Jalisco, Scampi & Halibut Seafood Grill, Spruce Goose Café, Hadlock Building Supply, The Oak Table, The Bayview, Nemo's at the Port Hadlock Inn, Ajax Café and Cucina Pizza. Special thanks to Paul Wolman and The Resort At Port Ludlow for three raffle prizes and two special gifts for the Best in Show winners.

The following residents participated in this event: Gene Carmody and Bob Olbrych, Event Organizers; Bill Stoner, Photographer; Kozy Carmody and Martha Olbrych, Registration and Booth Operation. Thanks to all who participated.

Port Ludlow Days Raffle and Prize Winners

by David Goudie, Communications

Port Ludlow Days 2009 had several raffles, a dog portrait contest and a golf tournament. Prize winners included:

Port Ludlow Dog Contest:

- Best Port Ludlow Dog 2009: "Frankie," owned by Diane and Jim Wilkerson.

Golf Tournament:

- Hole-in-One: Prizes offered included a Pebble Beach Golf Vacation valued at \$7,500; Nike golf equipment valued at \$1,000; Visa \$500 gift card; Bose Radio valued at \$400. Unfortunately, there were not any winners.
- First Place Team: Tony Jones, Dean Morgan, Mike Morgan and Myron Vogt—each received a \$75 gift certificate for use at the Port Ludlow Golf Course (PLGC) Pro Shop.
- Median Team: Brad David and Jim Bosshart, and Bill Engle—each received a \$50 gift certificate for use at the Pro Shop.
- Closest to the Pin for each Par 3 Hole: Adam Barrows, Bob Edleblut, Chuck Hynden and Tony Jones—each received a Port Ludlow Days hat and a PLGC driver head cover.
- Chipping Contest: Darin Hall, Port Ludlow Days golf shirt and a sleeve of Calloway golf balls; Brian Walsh, Port Ludlow Days golf shirt and driver head cover; Ken Schawel, driver head cover.

Raffles:

- Commemorative quilt, donated by Port Ludlow Quilting Club: Jan Lucas
- Nikon camera, donated by Greg and Pat Jordshaugen, with proceeds to Center Valley Animal Rescue: Lori Colby
- Bird feeder with 25-lb of thistle seed, donated by Cenex: Debbie Willis

Car Shows:

- Saturday Best of Show: Butch and Gayle Hurd's 1929 Ford A Tudor
- Sunday Best of Show: Pat Cooper's 1957 T-Bird



Best Port Ludlow Dog 2009: "Frankie," owned by Diane and Jim Wilkerson.

Photo by Gary Settle

Save the Date and Make Your Holiday List!



Courtesy photo

Wednesday, November 4 is the date for the South Bay Quilters and Crafters Show and Sale at the Bay Club. The Show will feature many of your favorite quilters, artists and crafters from both North and South Bay, who have been busily working on special items to tempt you.

Come to the Bay Club between 10:00 a.m. and 3:00 p.m. prepared to be dazzled and de-

lighted. You'll be able to get a good start on your holiday shopping. There will be something there for all of your family and friends! A percentage of the sales will be sent to the Jefferson County Food Bank to make the holidays better for all of Jefferson County.

See you there!

Entertainment Books Are Here!

Seattle Children's Hospital Guild is again selling Entertainment Books. The terrific 2009-2010 book is full of savings benefiting you and the hospital. There are separate books for Seattle and the South Sound. The price this year is \$20.

A partial list of values includes Safeway at \$20, The Georgian at the Fairmont Hotel at \$39, McCormick and Schmick at \$60, The Fisherman's Restaurant at \$25, Shucker's Restaurant at \$32, The Coldwater Bar and Grill at \$25, Arnie's at \$19. All of the restaurants are within walking distance of the ferries.

There are discounts on many more activities including theater, golf, Argosy and Gray Line Tours, museums and other attractions. What you don't use, you can gift to others—making you a very popular person indeed. Call Dion Watson for information at 437-0216.

Save the Date for Holiday Home Tour

Community Enrichment Alliance (CEA) will hold its Fourth Annual Holiday Home Tour on **Saturday, December 5**. You may visit five beautifully decorated homes and enjoy refreshments at Dana Point Interiors. After the tour the Port Ludlow Artists' League will have an opening and reception at The Inn At Port Ludlow.

PortLudlowToday.com Mentoring Program

by Dave Pike

In addition to community events and activities being available on *PortLudlowToday.com*, there is an area devoted to home owner organizations and other governance-related bodies. This web presence is provided free of charge and is available once training has been provided so each organization can maintain time-sensitive items. Board agendas, minutes, newsletters, etc. can all be placed on *PortLudlowToday.com* with minimal effort and made available to respective members. There will be a training session **Wednesday, October 21**, from 11:00 a.m. to 1:30 p.m. at the Bay Club. Attendees will learn about this new service and how to best use it.

Similarly, on **Wednesday, October 28**, from 11:00 a.m. to 1:30 p.m. at the Bay Club, there will be another session devoted to clubs and organizations who may have just heard about *PortLudlowToday.com* and want to learn how they too can take advantage of this new community resource. Attendees will learn how to keep and maintain their own calendars and how to post information for their members. During this presentation we will build a sample club to demonstrate how easy it is to do.

Please join us as we explore these new Internet tools. If you cannot attend the scheduled meetings, give us a call and we can arrange a private session devoted just to you and your particular situation. Contact Dave Pike at 437-8121, or by e-mail at piked@hotmail.com.

NIA is Coming to Port Ludlow!

Certified non-impact aerobics (NIA) Instructor Heidi Mattern will be teaching an introductory six-week NIA class at the Beach Club, beginning **Tuesday, October 13**. NIA is a movement form that combines dance, martial arts and yoga to create an exercise experience that is fun and safe for the body, yet endlessly stimulating for the mind and spirit. NIA moves are done barefoot and set to music.

Heidi has been teaching NIA classes at Madrona Mind-body Institute in Port Townsend for over two years. She specializes in choreographing NIA moves to jazz standards, Motown and world rhythms. Heidi says, "If you like to dance, you'll love NIA!"

The six-week class will be offered at the Beach Club beginning **Tuesday, October 13 through Tuesday, November 17**, 9:30 to 10:30 a.m. The cost is \$55. No experience is necessary and everybody is welcome.

For information and to register for classes, call Heidi at 385-0695 or e-mail heidim@olympen.com.

Olympic Peninsula Bluebill Oktoberfest Party



Willkommen! Get out the Lederhosen and steins! Strike up the Oompah band!

Autumn is upon us and presents us with another fine excuse to come together for food, fellowship and a party.

The Olympic Peninsula Bluebills is hosting its fourth annual Oktoberfest Party at the Bay Club on **Friday, October 23**, from 4:00 to 7:00 p.m. The Boeing Com-

pany is sponsoring this event for Boeing retirees, spouses and anyone interested in volunteering time to assist the elderly and less fortunate in the Tri-County area. The menu includes bratwurst, bockwurst, sauerkraut, Bavarian red cabbage, German style potato salad, dessert, wine, beer, assorted soft drinks, coffee and tea.

Those interested in participating in the Bluebills Oktoberfest need to notify Michael Graham at 437-5052, michaelg@cablespeed.com, by **Friday, October 16**.

We look forward to seeing you all at the Oktoberfest Party.

Wanted: Port Ludlow Archivist

by Tony Simpson, Port Ludlow Village Council (PLVC) President

Port Ludlow's history is decaying. Important documents disappear, more every day. It is time to reverse the rot. We need a permanent archive of all Port Ludlow documents. To see the start of the preservation effort, a test batch of about 50 documents, go to <http://pl-wa.org/file-archive>. It takes only seconds to find and retrieve any document. Read it online or print your own copy.

While collecting the sample documents we discovered many important lost ones, including legal documents going back to the early '70s. Fortunately, the State of Washington still had images of them. There are others out there.

We designed a system that will accept virtually any type of document—agreement, articles of incorporation, art object or painting, photograph, book, bylaws, covenants, conditions and restrictions (CC&Rs), easement, financial, incorporation, judicial ruling, legal document, magazine, map, presentations, technical analysis, report, video and voice recordings. When the documents are already in

Word, PDF, or equivalent, archiving them is a snap. Our Universal Resource Locators (URLs) meet World Wide Web Consortium (W3C) standards so others may reliably reference them.

Potentially, anyone in Port Ludlow can use the archive—homeowner associations, individuals, social clubs, sport clubs, other organizations, South Bay Community Association (SBCA), Ludlow Maintenance Commission (LMC), Port Ludlow Associates (PLA), churches, publications, etc. For security the website backs up the archive daily. For double assurance we also download archives to discs and store them in the vault at American Marine Bank in Port Ludlow. Thus anyone who needs to access information from our past will be able to do so.

We are looking for the first Port Ludlow Archivist to complete this important work. The archivist will have the help of a Committee, of which he/she will be the chair. If you have the skill for the job, or know someone who has, please let us know. It could be someone with librarian or archiving experience or someone who is just an excellent organizer with high standards. We also need help on the Archive Committee. Please send statements of interest, personal information or questions to archivist@pl-wa.org or ausimpson@msn.com or phone Tony Simpson at 437-8220.

Life-Writing Workshop

For years you've had a nagging urge to write that life story—yours or a loved one's—before it's too late. Meanwhile, time marches on and life persists with its interruptions and distractions. Join life-writing professional Maureen Lander and develop skills and strategies to finally preserve your precious past. Learn how to get started, stay motivated, uncover forgotten memories, and write in an interesting and compelling way. Enjoy the camaraderie and enthusiasm of fellow life-writers as your story takes shape.

Two workshops are planned. Both will be held at the Port Ludlow Community Church on Oak Bay Road above the Village Center for four consecutive Tuesdays, 10:00 to noon. The first begins **Tuesday, October 27** and the second **Tuesday, January 26, 2010**. Cost is \$80. To register, e-mail info@lifetime-legacies.com or call 360-509-6151.

You can find a course syllabus at www.lifetime-legacies.com. Graduates are invited to join our ongoing life-writing group that meets once a month.

Jefferson County Fire District #3

Alarm Statistics August 2009

Alarms

Fire	3
Rescue/Emergency Medical Service	42
Good Intent Calls	12
False Alarms	11
Total Alarms	4
	72

Ambulance Transports

Jefferson Healthcare	6
Harrison Medical Center	6
Harrison, Silverdale	6
Airlift Northwest	1
Total Transports	19

Mutual Aid with Neighboring Districts

Provided	13
Received	2
Total Mutual Aid	15

- Install tamper-resistant receptacles to prevent a child from sticking an object in the outlet.
- Never leave a child alone in a room with a lit candle, portable heater, lit fireplace, stove or where a hot appliance might be in use.
- Wear short or close-fitting sleeves when cooking.
- Set your hot water temperature no higher than 120 degrees.
- Install anti-scald valves on shower heads and faucets.

Fire Prevention Week has been supported by fire departments across the country for 85 years, making it the longest running public health and safety observance on record. Remember you can call PLF&R at 437-2236 if you have any questions relating to fire safety. For more safety information visit us on the web at www.plfr.org.

Bookmobile Hours Change

The Jefferson County Library is pleased to announce that it has increased service hours in Port Ludlow. The bookmobile stops in Port Ludlow every Wednesday from 1:30 to 4:30 p.m. at the Village Center near the Recycling Center.

“Demand for our service has been growing significantly in Port Ludlow,” said Outreach Services Manager Judith Lucia. “We noticed an increase in demand when the price of gas spiked last year. But then, even when the price of gas leveled off, customers continued to visit the bookmobile for its great collections and friendly service.”

Visit the bookmobile to browse the collection or order books and materials online at www.jclibrary.inf. Materials can be delivered directly to the bookmobile.

For added customer convenience the library also offers a drop box in the Village Center courtyard. The library is located in Port Hadlock at 620 Cedar Avenue. For more information call the library at 385-6544 or visit the website.

Library Services on Website

Today's Internet access provides options for taking advantage of local library services. *PortLudlowToday.com* has a webpage that consolidates many of the options available to residents.

Just go to *PortLudlowToday.com* and click on Local Information and select “Library Services” for links to the Jefferson County Library, Kitsap Regional Library, Library of Congress and the National Library for Visually Impaired and Physically Handicapped. You also will see links to free downloadable and audio books as well as book reviews by the *New York Times*.

Chief Ed Wilkerson's Safety Tip

Once a child touches a hot stove, he learns his lesson—stay away from a hot stove. This cliché does not take into account the pain and suffering from burns accompanying the learning process. That's why Port Ludlow Fire & Rescue (PLF&R) is teaming up with the National Fire Protection Association (NFPA) for Fire Prevention Week 2009, **October 4 to 10**, to urge Port Ludlow residents to “Stay Fire Smart! Don't Get Burned.” This year's campaign focuses on ways to keep homes fire safe and prevent painful burns.

The statistics are staggering. Each year roughly 3,000 people die as a result of home fires and burns, and more than 200,000 individuals are seen in the nation's emergency rooms for burn injuries.

The most common types of burn injuries result from fire or flame burns, scalds and contact burns. Burns are painful and can result in serious scarring and even death. When we take extra caution in our homes, such injuries are entirely preventable. Preventing devastating burn injuries is a healthy change we can make happen by following simple safety rules.

- Keep hot foods and liquids away from tables and counter edges so they cannot be pulled or knocked over.
- Have a three-foot “kid-free” zone around the stove.
- Never hold a child in your arms while preparing hot food or drinking a hot beverage.
- Be careful when using things like curling irons, ovens, irons, lamps, heaters.

CEA Seeks Themed Baskets, Books, CDs and DVDs for Silent Auction



Ann Radwick (center), June de Mers and friends examine items for a previous CEA Silent Auction.

Photo by Peggy Lee Flentie

Themed baskets, empty baskets and items or gift certificates for baskets are sought for the Seventh Annual Community Enrichment Alliance (CEA) Silent Auction, on **Saturday, November 7** at the Beach Club. Some neighborhoods and clubs have already committed to providing themed baskets. If every neighborhood and club donated a themed basket for the Silent Auction, it would go a long way towards providing the needed support for the Tri-County Victims of Domestic Violence and Sexual Assault and their children.

CEA's volunteers cooperate with the Boeing Bluebills to provide for these needy families during the holidays. The families' holiday wish lists include basic items such as underwear and warm jackets.

What is a Themed Basket?

Jan Lucas provided the following list of possible basket themes:

Garden • Wine • Barbeque • Stationery and Cards • Travel • Chef • Reader • Craft (e.g., Knitting) • Snacks Galore • Bird Watcher • Fisherman • Foreign Country • Color (e.g., red) • Baking • Dessert Lover • Club (e.g., Yacht Club) • Holiday • Sport • Games • Cards (e.g., Bridge)

Talented artist Mary Ellen Hart has consented to display donated jewelry to maximize examination at the Silent Auction. Jewelry items have garnered excellent bids in the past, so please look over your jewelry cases for something to donate. Please drop off your jewelry, themed baskets, basket items and gift certificates in the dark pink boxes at the Beach Club, located under the entrance table, and at the Bay Club, located in the Architectural Review Committee (ARC) office. The donation deadline

is **Saturday, October 17**. Eline Lybarger is the South Bay CEA Donation Coordinator at 437-7701 and Barbara Berthiaume is the North Bay CEA Donation Coordinator at 437-0423. If you would prefer to drop your donation items off at the Coordinators' homes, please call them for directions. To have gift certificates, wine or large-sized donations picked up, please contact one of the Silent Auction Chairpersons: June de Mers at 437-9546 or lajudemers@cablespeed.com; Mary Wall at 437-9420, mwall359@aol.com or Kathy Traci at 437-7874, tracipkt@aol.com.

Hardback/paperback books, DVDs and CDs are also needed for the Media Sale. If you have media to donate, please call Vicky Tallerico at 437-4065 for directions to her home. Please do not drop these items off at the Bay or Beach Club.

Important: As a 501 (c) (3) Not-for-Profit Organization, CEA will provide tax receipts to individuals and businesses for Silent Auction and Book/Media Sale donations. Please include your name and address with all donation items.

If you are interested in becoming a member of CEA and/or you are interested in helping with this worthwhile charity event, please contact CEA Membership Chairperson Pat Lohrey at 437-7760 or pntlohrey@cablespeed.com.

The Silent Auction preview and the CEA Book/ Media Sale will take place on **Saturday, November 7**, from noon to 4:00 p.m., at the Beach Club. The Silent Auction will be held later that day, from 4:30 to 7:30 p.m., also at the Beach Club. There is no entrance fee and refreshments will be served.

Working together as a community, we can "Celebrate the Harvest" by sharing with families in less fortunate circumstances.

Groundskeeper Struck

Golf course groundskeeper Jerry Tucson was transporting clippings on Thursday, September 10, when his vehicle slipped onto the roadway beside the Port Ludlow Golf Course. His vehicle was struck by a car, knocking Tucson to the pavement and damaging both car and cart. It is suspected that malfunctioning brakes on the groundskeeper's cart contributed to the accident.

Fire District and Sheriff Department personnel were on the scene quickly. Tucson was transported to a medical facility with suspected broken bones. The driver of the car was not injured. The accident underscores the importance of caution when operating any vehicle along or near Highland Drive.

Local Artists Selected

The work of three Port Ludlow area artists has been selected to be included in Art Port Townsend/Expressions Northwest, Northwind Arts Alliance and Port Townsend Arts Commission's 11th Annual Juried Art Exhibition. It will be held from **Friday, October 2 to Sunday,**



Barbara Adams.

Voice Photo Archives

November 1 at Northwind Arts Center in Port Townsend. An awards ceremony and opening reception will be held **Friday, October 2.**

Juror Jess Van Nostrand has selected 92 pieces from 560 works of art submitted from Washington, Alaska, Oregon, British Columbia, Idaho and Montana. Barbara Adams and Stephen Cunliffe of Port Ludlow and Michael Berman of Chimacum are among the artists whose work was selected. For further information visit the website: www.northwindarts.org or artporttownsend.org.



Pastor Dennis

Port Ludlow Community Church

9534 Oak Bay Road
360-437-0145

E-mail plcc@olympus.net

"Where Everyone is Someone and Jesus is Lord!"

Sunday Worship – 8:45 & 10:30 a.m.

Adult Education – 8:45 a.m. Children's Hour – 10:30 a.m.

Blending Traditional Hymns with Contemporary Worship

Hour of Prayer, Saturday – 7:00 p.m.

"Come into His presence with thanksgiving in your heart"

JIM POSEY INSURANCE SERVICES, LLC

360-531-3733

email: jimposey@cablespeed.com



- Health and Dental Plans
- Long Term Care Solutions
- Medicare Supplements
- Plan D (Prescriptions)
- Fixed Annuities



www.JimPoseyInsuranceServices.com

220 Machias Loop Rd, Pt Ludlow, WA 98365

The perfect shade of green

Call Shelli for all your home loan options.



Shelli Cates
360-662-8205 (direct)
360-621-4324 (cell)



800-648-3194 • www.americanmarinebank.com



DISCOVERY
PHYSICAL THERAPY

SPECIALIZING IN:

- Orthopedic Rehabilitation
- Senior Physical Therapy
- Incontinence Therapy
- Community Exercise Classes

360.385.9310

27 COLWELL STREET (RHODY DRIVE)

Active for life with Discovery Physical Therapy

Kevin Hunter, Broker/Owner
ABR, GRI



Ludlow Bay REALTY
Leading And Serving With Excellence

LudlowBayRealty.com

437-0800

290 Olympus Blvd, Port Ludlow

Also the home of Admiralty Property Management



Your Own Private POWER SOURCE.

Don't be left out in the cold and dark this year!



Call **Double D Electrical** for your
FREE estimate: **360-385-1130**

Community Meetings

The Ancient Art of Encaustic



Encaustic painting is an ancient medium.

Courtesy photo

The ancient art of encaustics will be the subject of the Port Ludlow Artists' League monthly demonstration by artist Martha Pfanschmidt, **Wednesday, October 21, 1:00 p.m.**, at the Beach Club. Encaustic painting is a process of painting with beeswax mixed with pigment. Wax is applied hot and then fused with a propane torch. "It is a very ancient medium, first practiced by the Etruscans for their "fayum portraits," says Pfanschmidt. Fayum portraits were realistic portraits first seen in the first century B.C.

Pfanschmidt graduated from Portland State University and received her Master of Fine Arts from Vermont College. She

has worked as an instructor at Marylhurst University in Portland, Oregon, since 1991 and has also taught at Portland State University and the Pacific Northwest College of Art at Portland. Her work has been shown extensively throughout the Pacific Northwest, as well as internationally in such countries as Japan, Brazil and Spain.

Guests are welcome to attend the Port Ludlow Artists' League meetings. A donation of \$5 is suggested. For more information about the League and its programs, please contact President Ken Thomas at 437-7906 or at plal9pres@gmail.com.

Amateur Radio Club

by Mark McKibbin

When you think about amateur radio what image comes to mind? Perhaps a picture of some odd eccentric sitting in a back corner in the basement or outside in a quickly erected shack with wisps of Morse code leaking from headphones comes to mind. Admittedly, sometimes this is true but amateur radio offers much more diversity than just sending and receiving code.

Did you know that amateur radio operators have had their own communication satellites orbiting the earth since

1962? Called OSCAR (Orbiting Satellite Carrying Amateur Radio), they have been funded and built by amateur radio operators from around the world. Currently there are 21 functioning ham satellites that have hitched a ride from various launch facilities orbiting the earth. These satellites rebroadcast a wide variety of ham radio communication modes. Ham radio is also in use on the Space Shuttles and the International Space Station (ISS).

Ever heard of ATV or Amateur Television? Since the 1920s hams have been involved with television transmissions between one and another. ATV provides the same color and sound capabilities that have been in use for many years before the DTV (Digital Television) transition. Hams have been known to set up studios in their homes and broadcast regular scheduled programs typically directed to other hams in the local community.

These are just a couple of examples. For more information, the Port Ludlow Amateur Radio Club (PLARC) sponsors a weekly no-host luncheon at Pedro's Fiesta Jalisco on Wednesdays and a monthly breakfast at the Olympic Timber House. All are welcome to attend. Reservations are available via the Club's website at <http://www.n7pl.org>.

CEA to Enjoy Breakfast or Lunch in Kingston

The Out to Lunch Bunch of Community Enrichment Alliance (CEA) invites everyone to enjoy breakfast, which is served all day, or lunch at the new Oak Table Café in Kingston. We will meet on **Thursday, October 29** at 11:30 a.m. at the Café located at 11171 Highway 104 N.E., which is about four blocks from the ferry parking lot. This new restaurant is very popular so be sure to make your reservation by **Thursday, October 22**. We will be ordering from the menu and will be provided with separate checks. You can take a look at a menu and get driving directions at the CEA table in the Bay Club on Wednesdays from 11:00 a.m. until 2:00 p.m.

The Café took over the old Kingston Firehouse property and shares the site with the Firehouse Theater. It may be possible to catch a movie after lunch if the timing is right.



Book Club Features Medical Thriller



Physician and author
Carol Cassella.

On **Tuesday, October 13, 6:30 p.m.**, at the Bay Club, the Port Ludlow Book Club will have a special guest. Physician and author Dr. Carol Cassella will join us for our discussion of her debut novel, *Oxygen*. You are invited to be part of this special evening and meet Dr. Cassella.

Oxygen deals with a Seattle anesthesiologist, Dr. Marie Heaton, and the free-

fall her life takes when an eight-year old child dies during a routine operation in which she is a participant. Dr. Heaton finds her well-ordered life shattered; trusted friends and colleagues abandon her, and a former lover, now friend, steps up to help her find her way back. Or will he? Mixed in with her professional and personal woes is her complex relationship with her ailing father. How their relationship takes on clarity and depth through this harrowing ordeal is a central theme in the story.

This is a medical thriller and the author cleverly handles medical terminology and situations so the reader is never left confused. She also shows the seamier side of medicine and its financial bottom lines. Her characters are human and likable, though not perfect. Her book is well paced and the ending has a surprising twist. She has been repeatedly referred to as “a writer worth following.”

The book selection for November is *Suite Française* by Irène Némirovsky. Everyone is welcome. For questions please call Martha Dawson at 437-4167.

Singles to Dine at Aroy Dy Thai Cuisine

All singles are invited to join us at Aroy Dy Thai Cuisine in Poulsbo on **Wednesday, October 14**, at 5:00 p.m. The address is 225 Lindvig Way N.W. This restaurant provides an expansive array of delicious appetizers, meats, poultry and seafood as well as vegetarian dishes. Call our hostess, Irene, at 437-0760 by **Friday, October 9** to make your reservation. Please wear your nametag and bring a friend.



Dr. Cassella's debut
novel.
Submitted photos

Dine and Discover Upcoming Events

On **Monday, October 12**, at the Beach Club, Ronald C. White Jr., author of two previous bestsellers on our sixteenth president, will share with us his vast knowledge of Abraham Lincoln. His latest book, *A. Lincoln: A Biography*, is a *New York Times*, *Washington Post* and *Los Angeles Times* bestseller. Dr. White has lectured at the White House as well as at many universities, civic organizations and conventions. He is presently a Fellow at the Huntington Library and a visiting professor of history at the University of California at Los Angeles (UCLA). Please sign up at the Beach Club to bring a dish to share with at least ten people.

On **Monday, November 2**, at the Bay Club, Chip Hanauer, world famous local hydroplane racer, will speak about his 35 years as a powerboat racer in a talk entitled, “Lessons from a Dangerous Life.” Chip has been called the most successful driver in the history of powerboat racing and has suffered numerous serious physical injuries from racing at over 200 mph. His adventurous life's journey has brought him both triumph and despair. Please sign up at the Bay Club to bring a potluck dish to share with about ten people.

For both events bring your own complete table settings, including placemats, napkins, dishes, glasses, silverware and a beverage. A fee of \$2 per person will be collected at the door. Doors open at 5:30 p.m.

For questions, call Hilda and Michael Cahn at 437-8223, or Darlene and Dick Gronhovd at 437-7692.

Duplicate Bridge Scores for August

by Ian Feltham

August 3: Darrell Fett/Bruce Schmitz, first; Carol Land/Shirley Porter, second; Madge and Robert March, third.

August 10: Dan and Soozie Darrow, first; Doris and Ian Feltham, second; Norman Crump/Jan Ditmar, third.

August 17: Dan and Soozie Darrow, first; Doris and Ian Feltham, second; Carol Land/Shirley Porter, third.

August 24: Carol Land/Shirley Porter, first; Doris and Ian Feltham, second; Ralph Phillips/Lois Ruggles, third.

August 31: Darrell Fett/Bruce Schmitz, first; David Hendrie/Ralph Stroy, second; Doris and Ian Feltham, third.

American Contract Bridge League (ACBL) Duplicate Bridge is played at the Ludlow Maintenance Commission (LMC) Bridge Deck on Mondays from noon to 5:00 p.m. For information call either Doris or Ian Feltham at 437-9196.

First Wednesday Luncheon Presents "Museum in a Trunk"



A trunk full of Chinese games, clothing, art, maps and books found in Jefferson County

Photo courtesy of
Jefferson County

The First Wednesday Luncheon plans a unique presentation on **Wednesday, October 7**, at 11:00 a.m. at the Beach Club. Robin Ornelas, chairman of the Jefferson County Historical Society Education Committee, will present a "Museum in a Trunk" program:

"The Chinese Story in Jefferson County from 1870 to 1930." Through her wonderful presentation and from the trunk filled with artifacts found in Jefferson County, we will learn why the Chinese left their homeland to live here and how they have influenced our community.

Please invite your friends and neighbors to share an interesting morning. Be sure to make your reservations so the Food Committee can plan accordingly. You may sign up at the Bay or Beach Club by **Friday, October 2**, or by contacting Sandy Rooks at sandraroos@hotmail.com or 437-0747

The luncheon and raffle benefits the Tri-Area Food Bank. The requested October Food Bank donations are jellies, crackers, salad dressings and cereals. Donations of cash or check made payable to the Tri-Area Food Bank are appreciated, as are hygiene and paper products. Donations of food may also be left at either the Bay or Beach Club. They are picked up and delivered to the Food Bank regularly.

September's raffle winner was Anne Cross, who received a gift certificate from "T's" in Port Townsend. Jeannette Best won the door prize, the book *"Women to Reckon With"* by Glynda Peterson-Schaad, the September luncheon's guest author.

October Stamp and Paper Arts

The Stamp and Paper Arts Group will meet at the Beach Club on **Wednesday, October 21**, at 10:00 a.m. This month we will learn to make a special gift container in time for the festive season. All interested are invited. Call Jeanne Mitchell at 437-7702 for further information.

Garden Club Schedules Fall Events

On **Wednesday, October 14**, 11:00 a.m., at the Bay Club, Cass Turnbull will explain how to prune and renovate the overgrown garden. She will cover basic pruning of ornamental trees and shrubs, and offer creative solutions for the overgrown or over-planted garden. Her book, *Cass Turnbull's Guide to Pruning*, will be available for purchase and signing.

Cass Turnbull founded PlantAmnesty, a private non-profit organization to "end the senseless torture and mutilation of trees and shrubs." It has gained considerable local and national press and attracted over 900 members in 46 states and 4 countries. She is a Washington State certified landscaper and arborist who teaches horticulture at Washington State vocational schools. Frequently published and interviewed on the subject of pruning reform, she has won three awards for her work.

This is a brown-bag luncheon. The Port Ludlow Garden Club (PLGC) will furnish beverage service and desserts. There will be a \$5 charge for non-members. For further information call Sharon Lynch at 437-4028.

Garden Club members should also mark **Wednesday, November 18**, on their calendars to join the Annual Garden Club Holiday Shopping Tour. We leave Port Ludlow by chartered coach at 9:00 a.m. to see the Rosedale and Peninsula Gardens, then on to Gig Harbor to visit the Elandon Garden Gallery and many other great stores.

The cost of this trip is \$25 for the bus. Lunch is not included but there are good restaurants to choose from. Non-members are welcome. Mail your check payable to PLGC to P.O. Box 65235 or bring it to the October club meeting. Your check reserves your place on the tour.

Computer Club News

Google - The Search Engine Elephant in the Room

Port Ludlow Computer Club (PLCC) offers an overview of search engines and an in-depth view of the power of Google presented by Bob Snow.

In addition to providing easy access to billions of web pages through search, Google has many special features to help you to find exactly what you're looking for. Some of its most popular features are Everyday Essentials, Reference Tools, Choosing Keywords, Local Search, Trip Planning, Query Refinements, Search by Number and much more. Bob will walk us through many of these exciting Google features. Join PLCC for this informative evening on **Monday, October 12**, at 6:00 at the Bay Club.

continued on next page

Computer Club continued from previous page

Expand your skills using Photoshop Elements 7 at the "Make your Christmas Cards" on **Monday, October 19**, from 10:30 a.m. to noon. This is the second in the occasional series given by Maureen Poole about using Elements 7 for other purposes rather than photo editing.

- Office SIG meets **Monday, October 5**, 10:30 a.m.–noon
- Pro Show Gold SIG will meet **Thursday, October 15**, 1:00–3:00 p.m.
- Special Topics SIG is **Monday, October 19**, 10:30 a.m.–noon
- Mac SIG meets **October 19**, 6:00–7:00 p.m.
- Photography SIG meets **Monday, October 26**, 10:00 a.m.–noon.

Workshops are held every **Saturday** morning 10:30 a.m.–noon. All SIGs and Workshops meet at the Bay Club and are for members only.

For information about joining PLCC, contact Dick Allyn at 360-554-0193 or e-mail him at zither@cablespeed.com. Check the website at www.pl-cc.com for up-to-date Club news.

October Hikes



Hikers recently visited the beautiful Notch Pass trail.

Photo by Dan Darrow

The hiking group provides the opportunity to explore some new trails. At the beginning of September, a group did Notch Pass, an old Native American trail. Notch Pass takes about the same effort as Mount Walker but seems much easier as the trail is beautiful and even. The trip down the other side to Bark Shanty was gorgeous. This well-maintained trail is a "must" for those who are looking for a nearby and new trail in the Olympics.

Friday, October 2: Gray Wolf

This is a moderate 8.4-mile hike with a 600-foot elevation gain. The trail follows an old logging road and joins the Gray Wolf River. Enjoy a side trip on Cat Creek Loop. Meet at the Bridge Deck at 8:30 a.m. to arrange carpools and get directions to the trailhead. For information, contact Jack Riggen at 437-0370 or Larry Scott at 437-9299.

Wednesday, October 7: Fall Planning Meeting

The Hiking Club fall planning meeting/dinner will be held at the Bay Club on **Wednesday, October 7**. The business portion of the meeting will begin at 5:00 p.m. with dinner following at 6:00 p.m. We will select 12 hikes and 24 leaders for hikes to occur between **November 13 and April 30, 2010**. Come with ideas and a willingness to volunteer to lead one of these interesting adventures. Also, think about an urban area you would like to explore on one of our hikes. Contact Patty Patterson at 437-4117 or patricia.k.patterson@earthlink.net for questions and to suggest ideas. Sign up at the Bay Club to bring soup, salad, bread or dessert. In addition, you will need to bring your own placemats, cups, napkins and silverware. A \$2 per person fee will be collected. Contact Bernie Robinson at 437-0703 or brob@cablespeed.com with questions about the dinner.

Friday, October 16: Green Mountain

This is a moderate 6-mile hike with a 1,000-foot elevation gain to the second highest peak on the Kitsap Peninsula. There are good views of Puget Sound, the Seattle skyline and Mount Rainier. Meet at the Bridge Deck at 8:30 a.m. to arrange carpools and get directions to the trailhead. For information, contact Tom Satterlee or Patty Patterson at 437-4117.

Friday, October 30: Robin Hill Farm

Relax on an easy 6-mile hike in this Clallam County Park that includes forest, meadows and wetlands. There will also be a chance to explore a portion of the Olympic Discovery Trail. Meet at the Bridge Deck at 8:30 a.m. to arrange carpools and get directions to the trailhead. For information, contact Tony or Alayne Goods at 437-9412.

Thursday, December 10: Hiking Holiday Hullabaloo

Save the date for the annual winter celebration. This year it will be at The Inn At Port Ludlow. Watch your e-mails for details.

Every Wednesday: Timberton Loop

Walk the 4.5-mile Timberton Loop. Enjoy views of the Olympic Mountains and Mount Rainier. Meet at the trailhead on Timberton Road at 9:00 a.m. For information, contact Doris Monti at 437-0716.

Port Ludlow Village Council

Port Ludlow Village Council (PLVC) Report

by Jack McKay, PLVC Secretary

The Port Ludlow Village Council held its regular monthly meeting on Thursday, September 3, at 3:00 p.m. at the Bay Club. Council members present included: Jim Boyer, Gene Carmody, Lynn Gauché, Doug Henderson, Laury Hunt, Jack McKay, Dean Mosier, Larry Nobles, Tony Simpson and Art Zoloth. The meeting was called to order by Tony Simpson, President.

Reports from Agencies and Organizations:

Port Ludlow Associates (PLA)

Diana Smeland, President, took questions from the audience relating to the pace of business at PLA and recycling at The Inn At Port Ludlow. According to Smeland, business has been generally slow due to the economy. PLA is looking into recycling of glass from the Inn. She said that the rules for recycling by businesses are different from those of individual residents.

Port Ludlow Fire & Rescue (PLF&R)

Ed Wilkerson, Chief, reported on the status of the current burn ban. It is likely to be lifted after a major rain storm and will be done in consultation with the State Department of Natural Resources (DNR). There is still a need to be vigilant. PLF&R also has a new vehicle in service and is using a foam product for fire control that is environmentally friendly. The product is approved by the Forestry Department and is 99 percent water. The concentration is equal to one cup of detergent to 1,000 gallons of water. Anyone who is concerned should phone PLF&R directly.

Other new events include the purchase of a new heart pack with a \$10,000 donation from Shawna Matthews for the Gammil Foundation and the completion of a new PLF&R website, plfr.org.

In response to questions about fire danger in Port Ludlow, Wilkerson said that we do not have the same hazards and weather patterns as California and the danger is not the same. Education about fire danger is fairly effective. Residents should use fire-wise principles. PLF&R investigation of the cause of fires depends upon the situation.

Port Ludlow Chamber of Commerce

Arlene Obtinario, who was absent, provided a written report on major Chamber activities. The Chamber is continuing investigation of the consolidation of services. It also is developing a proposal on use of the 2010 Lodging

Port Ludlow Village Council Board Meetings

General Meeting

Thursday, October 1

3:00 p.m., Bay Club

Workshop Meeting

Tuesday, October 20

3:00 p.m., Bay Club

www.plvc.org

Tax that will be fair to member organizations. The 2010 budget of the Chamber is being prepared. A report on "Preventing the Spread of Disease" was presented to the Council for distribution.

Jefferson County

County Administrator Phillip Morley reported on the role of the County Administrator in County operations and the status of the budget. He said that the Annual General Fund's budget is \$32 million. Roads and related public works projects account for about \$10 million for a total of \$42 million per year.

Morley believes in partnership between agencies citing an example of a positive aspect of the Hood Canal Bridge closure was the relationship between County and State agencies especially in the area of transportation where bus and ferry systems coordinated schedules. Such arrangements are critical for the maintenance of tourism, an important industry for Jefferson County. Other examples include the coordination between the Chambers and the use of common branding. The "Life on the Other Side" campaign has been effective in promoting tourism. Lastly, Team Jefferson has been focusing on growing clusters of excellence, especially in the arts, agriculture, cuisine and technology. About 10 clusters have been developed and represent a partnership between the City of Port Townsend and the County.

Morley discussed the budget implications of a 1 percent cap on property tax imposed by Initiative 1033 and a 4 percent increase in operating expenses. He also mentioned the forecasted drop of 10 percent in sales tax revenues and the decline in real estate taxes. This leaves Jefferson County in need of taking steps to reduce operating costs and finding ways to increase revenue. Some options are to: (a) Increase efforts to receive grants,

continued on next page

PLVC continued from previous page

(b) Reduce non-mandatory services, (c) Hand off some services to non-profit agencies, (d) Reduce the level of mandated services, and (e) Reduce service or access to parks. Completion of a sewer system in the Hadlock area, a \$35 million expense, and development of the land south of the airport may attract additional business and revenue. Morley said the County will look into cutting funds for parks. Eighty percent of money for parks comes out of the General Fund and they are not a mandated expense.

Morley also discussed the County's expenditure for the trial of the person accused of murdering the Yarrs, a Quilcene couple. The County is required to pay the court costs incurred by the defendant.

Committee and Board Member Reports: **Financial Report**

Gene Carmody reported that August Revenues were \$9,680.00 compared with August Expenditures of \$7,645.76. The General Fund contains \$15,184.11. Certificates of Deposit total \$10,731.72. The Iron Mountain Quarry legal defense fund has \$879.53. Total assets are \$26,795.36. The Trails Account contains \$11,371.20.

Disaster Preparedness Report

Tom Stone, Director, reported on the training session for volunteers. He discussed the planning process of preparing for a possible Port Ludlow disaster. Goal is to have at least 10 trained volunteers in disaster assistance. A Community Emergency Response Team (CERT) training course is being offered in October to train volunteers. (See related article on adjacent column.) The cost of the program is \$45 per person. Stone requested that the Council pay half of the fee for a maximum of 40 persons. The PLVC approved up to \$1,200 in tuition costs to offset the cost of training. They will approach the North and South Bay Associations to split the costs.

Election of Directors

President Tony Simpson reported the County Auditor provided addresses to insure that all Port Ludlow residents were mailed a short vita for each Board vacancy. Ballots were mailed in August to all residents and property owners. Procedures for tallying the results were reviewed. The Board requests that residents return their ballots promptly.

Community Development Committee

Chair Larry Nobles reviewed highlights and concerns with the proposed revision of the Shoreline Management Plan (SMP). Jim Boyer added that the suggested buffer zone measurement has returned to the initial suggestion of 150 feet. The current buffer is 35 feet. He said that there is no evidence that the current buffer zone should be changed because of problems with the 35-foot buffer; therefore, he is not in favor of the changes.

Laury Hunt asked, "If revision is approved, who pays litigation costs?" The Council approved sending representatives of the PLVC to hearings, making oral and written testimony about the SMP, particularly changing of the buffer dimension.

Iron Mountain Litigation Committee

Chair Lynn Gauché reported on results of a meeting with representatives from Pope Resources and Iron Mountain Quarry (IMQ). The following points of understanding were accepted by all parties:

- No IMQ gravel trucks in Port Ludlow (agreed in writing).
- Pope will make concessions on trails on Pope property.
- Ridge line eventually will be removed, i.e., 35 years.
- First mining activity would be late 2011 or early 2012.
- No latest technology will be used in mining operations to reduce impacts.
- Market will drive the mining activity; nearest mining is one-half mile from Golf Course.
- Mining will occur in 20-acre parcels for each approval process.

An open meeting is scheduled at the Bay Club on **Monday, October 14**, 4:00 p.m., to discuss specifics of the mining operation. One hour will be allocated for presentations and one hour for questions from the audience.

Announcements

The next PLVC General Meeting will be **Thursday, October 1**, 3:00 p.m. at the Bay Club. The Workshop Meeting will be **Tuesday, October 20**, 3:00 p.m., at the Bay Club. Agendas and minutes of the PLVC meetings may be seen on the website, plvc.org.

Disaster Preparedness

by Tom Stone, Port Ludlow Disaster Preparedness Director

The need for additional Community Emergency Response Team (CERT) volunteers was the theme at the Port Ludlow Village Council (PLVC) Disaster Preparedness Potluck/Hamburger Bash at the Bay Club in August.

CERT was started nationally about twenty years ago based on lessons learned from the response to a major earthquake in Mexico City. It was documented that over 800 people volunteered to help those trapped in destroyed buildings. Unfortunately, none of those volunteer helpers had been trained in basic emergency response techniques and over 100 of them perished while attempting to rescue others.

In a real Port Ludlow disaster, Port Ludlow Fire & Rescue (PLF&R) would be swamped since only one crew is

continued on next page

Disaster Preparedness continued from previous page

on watch at the main station and one at the South Point station. Volunteer fire and EMS (Emergency Medical Services) personnel might be available, but all could be overwhelmed by a major disaster. Because of our isolated location and lack of timely outside aid, our self-sufficiency target could range from a minimum of five to seven days. Although our Block Captain's disaster communications capability works, trained CERT members must fill the gap before professional help arrives.

Four CERT areas (two in North and two in South Bay) are being planned with at least 10 trained CERT members each. More frequent refresher training and exercises are planned if additional volunteers can be recruited.

The Port Ludlow CERT Program and PLF&R are sponsoring a CERT training course to train people to care for themselves and their neighbors in the event of a disaster. No prerequisites are required. It will be taught at the main fire station, **Wednesday-Friday, October 7-9**, followed by a practical exercise on **Saturday, October 10**. (Times are yet to be determined.) In order to encourage volunteers, community associations are subsidizing the cost of the training. To enroll, contact CERT coordinator, Pat Traci at tracipkt@aol.com.

The Fireside

At The Inn At Port Ludlow

SUNDAY

Wines By The Bottle Half Price!

TUESDAY

Paris Comes To Your Table

A Bistro Style 4 Course Dinner for only \$19

WEDNESDAY

Fireside Full House Bar-B-Q - Wines By The Bottle Half Price!

THURSDAY

Authentic Italian Family Dinner

\$15 per guest/minimum 4 guests

360.437.7000 | www.portludlowresort.com

Recipient of the 2009 Condé Nast Traveler Gold Award.

Join us in Loving God and Living Boldly! The First Presbyterian Church of Port Townsend

1111 Franklin Street

Worship Schedule

We are a welcoming community, sharing the spirit of Christ.

• Loving generously • Serving selflessly • Living justly

8:15 a.m., Worship & Children's Church

9:30 a.m., Adult Education & Children's Church

11:00 a.m., Worship & Youth Education

Professional Child Care



Call the the church office at 385-2525

or visit our website, www.fpcpt.org
for more information.



A Rate With Curb Appeal

*Mortgage rates are at historic lows. Check our
current rates or apply online today!*

Port Ludlow
74 Breaker Lane
Port Ludlow, WA 98365
360-437-7863



KITSAP BANK

800-283-5537 • www.kitsapbank.com



Hadlock Mattress & Furniture

*Essential Sleep Energy,
Everyday!*

www.englander.com

ENGLANDER
Since 1894

BETTER SLEEP. BY DESIGN™

Always The Best For Less In Hadlock!

760 Chimacum Road * 385-4476

Mon.-Fri. 10am-5pm
Sat. 10am-4pm

LET'S GET TO KNOW ONE ANOTHER.

New to the area? Unfamiliar with the Edward Jones way of doing business? Take an hour or so to learn how we work with millions of individual investors to create and implement investment strategies designed to achieve long-term financial goals.



Larry Wiener
Investment Representative
9526 Oak Bay Road, Suite 300
Port Ludlow, WA 98365
360-437-5113

Member SIPC

Call today to schedule
a no-cost no-obligation
portfolio review.

Edward Jones®



Handyman

WITH A ONE TON TRUCK



Chainsaw
Gravel



Move-Remove • Haul in-Haul out
Estate Clean-up • Redo-Repair

INSIDE OUTSIDE

What are your needs?

360-385-0515

Tree trim
Yard care



Village Activities Calendar

Most events are open to everyone in the community unless members-only is indicated, or unless obviously for special-interest groups

October

Thurs., October 1

9:00 a.m. – noon, Bayview Board Meeting (members), Bay Club
1:00 – 3:00 p.m., Knitwits, Beach Club
3:00 – 5:00 p.m., PLVC General Meeting, Bay Club

Fri., October 2

8:30 a.m., Hiking Club leaves for Gray Wolf, Bridge Deck
9:00 – 11:00 a.m., SBCA Board Meeting (members), Bay Club
4:00 – 5:00 p.m., Artists' League Reception for Penny Lou Sanzaro, Artist of the Month
5:00 – 6:00 p.m., Artists' League Reception Continues, Art Gallery

Sat., October 3

7:00 – 8:00 p.m., Arts Council's Performing Arts in Port Ludlow Opening Night Party, Bay Club
8:00 – 10:00 p.m., "Franc D'Ambrosio's Broadway," Bay Club

Mon., October 5

9:00 a.m. – noon, LOA Board Meeting (members), Beach Club
10:30 a.m. – noon, Computer Club Office SIG (members), Bay Club
3:00 – 5:00 p.m., Timberton Board Meeting, Bay Club

Tues., October 6

9:00 a.m. – noon, PLVC Trails/NRC meeting, Beach Club
10:30 a.m. – 12:30 p.m., CEA Meeting, Beach Club
2:00 – 5:00 p.m., PLUSH Investment Club, Bay Club

Wed., October 7

CERT Training, PLF&R Station
11:00 a.m. – 1:00 p.m., First Wednesday Luncheon, "Chinese Story in Jefferson County," Beach Club
2:00 – 4:30 p.m., Beginning Computer Class, Bay Club
5:00 – 7:00 p.m., Hiking Club Fall Planning Meeting/Dinner, Bay Club

Thurs., October 8

CERT Training, PLF&R Station
9:30 – 11:30 a.m., Sumi-e Workshop, Bay Club
10:00 a.m. – noon, Drainage District Presentation on Completed Projects, Beach Club
Noon, Lady Niners Lunch, Belmont in Port Townsend
Noon – 8:00 p.m., Hands on Clay, Bay Club

Fri., October 9

CERT Training, PLF&R Station
9:00 a.m. – 3:00 p.m., Hands on Clay, Bay Club
10:00 a.m. – noon, Inner Harbor Board Meeting (members), Bay Club
5:00 – 7:00 p.m., South Bay Monthly Social (members), Bay Club
7:00 – 9:00 p.m., Family Movie Night, Bridge Deck

Sat., October 10

CERT Training, PLF&R Station
9:00 a.m. – 2:00 p.m., LMC General Meeting (members), Beach Club

Mon., October 12

9:00 – 11:00 a.m., Bluebills Meeting, Bay Club
1:00 – 4:00 p.m., Intermediate Watercolor with Joy, Bay Club
10:30 a.m. – noon, Elements 7 Workshop for Christmas Cards, Bay Club
5:30 – 9:00 p.m., Dine and Discover on "Lincoln," Beach Club
6:00 – 6:30 p.m., Computer Club Social, Bay Club
6:30 – 8:00 p.m., Computer Club General Meeting, Bay Club

Tues., October 13

9:30 – 10:30 a.m., NIA Introductory Classes Begin, Beach Club
6:30 – 8:00 p.m., Book Club with guest and author Dr. Carol Cassella, Bay Club

Wed., October 14

9:00 a.m. – noon, Beginning Watercolor with Joy, Bay Club
11:00 a.m. – 2:00 p.m., Garden Club Luncheon, Pruning/Renovating, Bay Club
2:00 – 4:30 p.m., Beginning Computer Class, Bay Club
4:00 – 6:00 p.m., Community Meeting with Iron Mountain Quarry/Pope Resources, Bay Club
5:00 p.m., Singles Dine at Aroy Dy Thai, Poulsbo
7:00 p.m., USCG Auxiliary General Meeting, Fire Station

Thurs., October 15

1:00 – 3:00 p.m., Computer Club Pro Show Gold SIG (members), Bay Club
5:30 – 9:00 p.m., Niners Couples' End-of-Season Dinner, Bay Club

Fri., October 16

8:30 a.m., Hiking Club Leaves for Green Mountain, Bridge Deck
9:00 a.m. – 1:00 p.m., A Day with Chef Dan, An Homage to Fall, Fireside At The Inn
9:30 – 11:00 a.m., SBCA ARC Review Meeting, Bay Club
6:00 p.m., American in Paris Dinner, Fireside At The Inn

Sat., October 17

6:00 – 10:00 p.m., Free Spirits Oktoberfest, Bay Club

Mon., October 19

10:30 a.m. – noon, Computer Club Special Topics SIG (members), Bay Club
1:00 – 4:00 p.m., Intermediate Watercolor with Joy, Bay Club
6:00 – 7:00 p.m., Computer Club Mac SIG (members), Bay Club

Tues., October 20

9:30 – 10:30 a.m., NIA Introductory Class, Beach Club
1:00 – 3:00 p.m., Knitwits, Beach Club
1:00 – 4:00 p.m., Fly Fishers Meeting, Bay Club
3:00 – 6:00 p.m., PLVC Workshop, Bay Club
6:30 p.m., Reader's Theater, Call 437-2861 for Location

Wed., October 21

9:00 a.m. – noon, Beginning Watercolor with Joy, Bay Club
10:00 a.m. – noon, Stamp and Paper Arts Group, Beach Club
11:00 a.m. – 1:30 p.m., Port Ludlow Today Training, Bay Club
Noon – 4:00 p.m., WGA Annual Awards Banquet, Bay Club
1:00 – 3:30 p.m., Artists' League Meeting, Beach Club
2:00 – 4:30 p.m., Beginning Computer Class, Bay Club

Continued on next page

Calendar continued from previous page

Thurs., October 22

9:30 – 11:30 a.m., Sumi-e Workshop, Bay Club
Noon – 8:00 p.m., Hands on Clay, Bay Club

Fri., October 23

9:00 a.m. – 3:00 p.m., Hands on Clay, Bay Club
4:00 – 7:00 p.m., Bluebills Oktoberfest, Bay Club
7:00 – 9:00 p.m., Family Movie Night, Bridge Deck

Mon., October 26

10:00 a.m. – noon, Computer Club Photo SIG (members), Bay Club
1:00 – 4:00 p.m., Intermediate Watercolor with Joy, Bay Club

Tues., October 27

9:30 – 10:30 a.m., NIA Introductory Class, Beach Club
10:00 a.m. – noon, CEA Meeting, Bay Club
10:00 a.m. – noon, Life-Writing Workshop, Bay Club
Noon, WGA Closing Day Lunch, Niblick's

Wed., October 28

9:00 a.m. – noon, Beginning Watercolor with Joy, Bay Club
11:00 a.m. – 1:30 p.m., Port Ludlow Today Training, Bay Club
4:00 – 9:00 p.m., MGA Final Awards Dinner and Raffle, Bay Club

Thurs., October 29

11:30 a.m., CEA Out to Lunch Bunch Breakfast/Lunch at Oak Table Café, Kingston

Fri., October 30

8:30 a.m., Hiking Club Leaves for Robin Hill Farm, Bridge Deck

Sat., October 31

4:30 – 6:00 p.m., CEA's Trunk-a-Treat, Village Center Parking Lot

Future Events

Dine and Discover on Hydroplanes, November 2
South Bay Quilters and Crafters Show and Sale, November 4
Cabaret Night with String Jazz by Van Django, November 6
CEA Book/Media Sale and Silent Auction, November 7
Ludlow Village Players Auditions, November 17 and 19
CEA Holiday Home Tour, December 5
Niners Holiday Social, December 6
Hiking Club Holiday Hullabaloo, December 10

Personalized, Professional, Discreet



- Companionship
- Meal Preparation
- Medication Reminders
- Laundry & Light Housekeeping
- Transportation, Shopping & Errands

437-9884

Home Instead
SENIOR CARE®

With a little help from a friend.

Each Home Instead Senior Care franchise office is independently owned and operated.

homeinstead.com

Full Service Insurance & Investments



Bill Hubbard

401K Rollovers
Life • Mutual Funds
Retirement & College Savings Plans
Auto • Home • Annuities
In-home appointments available on request



Allstate
You're in good hands.

1304 West Simms Way
Port Townsend

phone: 360-385-1019

toll free: 866-647-6814
fax: 360-385-1019

whubbard@allstate.com

Economic crisis put a crimp in your retirement? Maybe it's time for a REVERSE MORTGAGE!

"Port Ludlow's Reverse Mortgage Specialists"

Call for information:

Teresa Forrest (360) 437-1192

Nancy Karam (360) 301-5808

AVIS MORTGAGE

= Licensed, Bonded, Local =

Lic. #510MB47252 Lic. #510LO47253 Lic. #510LO47689



Hear For Life
AUDIOLOGY, LLC



Marilyn Loy-Every, M.S.
Certified Audiologist, CCC-A
Professional Hearing Care

"When experience makes the difference."
Comprehensive Hearing Evaluations
Digital Hearing and Assistive Listening Devices
Hearing Device Repairs & Batteries
Insurance Billing • Physician Referrals

Call For A Hearing Consultation:



360 437-7767
115 Village Way, Port Ludlow



Dr. Jerry and Kathryn Brady
119 Village Way,
Port Ludlow
www.BradyChiro.com

Medicare & Most Insurance Accepted

BRADY
CHIROPRACTIC
437 - 8008

HEALTH & WELLNESS

Personalized Treatment to You

28 Years of Experience
Effective • Gentle • Pain Relief of:

Neck / Back Pain • Headaches • Fatigue
Shoulder / Arm Pain • Hip / Leg Pain
Sports Injuries • Nutrition Concerns

Beach Club/North Bay News

Submit your articles to Barbara Berthiaume at 437-0423, or
by e-mail to barbara.berthiaume@gmail.com
no later than the 10th of the preceding month.

✱ Denotes Beach Club members-only activity

LMC September Meeting Highlights

by Vaughn Bradshaw

The Ludlow Maintenance Commission (LMC) monthly Board Meeting was held on Saturday, September 12, in the Bayview Room at the Beach Club. The Board took the following actions:

- Approved a contribution to the Community Emergency Response Team's (CERT) training in the amount of \$250. This matches the \$250 contribution made by the South Bay Community Association (SBCA).
- Heard a proposed amendment to the LMC Greenbelt Committee's policies and procedures relating to tree topping. The existing policy discourages the removal and topping of large conifers in the Greenbelt, but provides for consideration on a case-by-case basis. The proposed new language is: "If it has been determined, however, that a tree should be removed to protect a view, then 'topping' the tree may be considered as a first step in the eventual removal and replacement of said tree, only after a feasibility study is conducted including proximity to residences and/or roads, and the potential impact of tree 'topping' or removal on remaining trees." The amendment was accepted as a first reading.
- Reviewed the existing LMC regulation regarding trees and views for possible revision. Four lots, previously determined to be out of compliance with the regulation and referred to the Board for enforcement, were tabled at this meeting until the possible amendment to the regulation has been resolved.
- Approved continuing regularly scheduled monthly discussion sessions that have occurred on a trial basis for the past three months. The meetings are intended to address specific issues that need to be dealt with at greater length than the time available during Board Meetings. If there is no need for extended discussion in any given month, the session will be canceled for that month.

Important Dates

LOA Meeting

Monday, October 5, 9:00 a.m.

LMC Board Meeting

Saturday, October 10, 9:00 a.m.

Tel: 437-9201

e-mail: beachclub@olympus.net

Sign up for the *Log* online at the above address.

Visit www.lmcbeachclub.com
for more complete information

All LMC members are welcome. ✱

President's Message

by Elizabeth Van Zonneveld, LMC President

Summer is a distant memory, snow birds are packing for warmer places, potluck parties are starting up again and volunteer activities gain momentum as the cooler season rolls in. At the Ludlow Maintenance Commission (LMC), while swimming pool schedules change and exercise programs gain more attendees, work continues on budgets and plans to cope with our aging community. That is, older homes, older bigger trees, older sewer pipes and swimming pools—not to mention older residents!

During September, LMC trustees held a discussion session with our Architectural Control Committee (ACC) chair, Bill Clark, on the topic of clarifying parts of the Trees and Views Regulation. A number of members attended and spoke of their concern that too much emphasis on clearing trees to attain or retain views would put the homes below those requesting such cutting at risk from erosion and drainage problems. Discussions included reference to both the location of the sewer system collection line located along the Montgomery Lane bluff area, bluff erosion and slide hazards and the role of Port Ludlow Drainage District (PLDD) in managing runoff.

PLDD chair Lee Amundson has arranged a presentation at their next regular meeting to help acquaint residents with the drainage projects that have been undertaken and completed in the North Bay. PLDD's next meeting is scheduled for **Thursday, October 8, 10:00 a.m.** at the Beach Club. Engineer Nancy Lockett of Gray-Osborn Engineering, PLDD's consultant, will be on hand and the public is invited.

continued on next page

Board Highlights *continued from previous page*

The clearing of a big bramble patch at Oak Bay and Walker is the result of several years of planning and work by the Greenbelt Committee and the neighborhood, whose efforts have resulted in planting and watering a number of smaller species of trees, pruning of others and removal of a large blackberry thicket. It's a nice improvement, and there are still plenty of blackberries available for picking.

Manager's Report

by Brian Belmont

Assessment revenue, contract memberships, architectural fees, rental income and interest income continue to be significantly under budget through the first eight months of 2009. Year to date, we have collected more than 98 percent of this year's assessments. There is currently \$12,473.29, representing 16 units, in outstanding assessments that includes three delinquencies from previous years. Since last month's meeting, two delinquent assessments were paid and a third is scheduled to be paid soon.

In August, Ludlow Maintenance Commission (LMC) purchased 18 new chaise lounges for the outdoor pool deck. During a six-week period 12 plastic lounges broke. Eighteen chairs were purchased in order to qualify for the better price break of \$125 per chair, which included shipping and sales tax.

Maintenance employee Don Baker replaced the heating elements in the men's sauna. After hiring a mechanical engineer to prepare schematic plumbing drawings of the six recently installed heat pumps, Jefferson County Department of Community Development (DCD) issued an installation permit to LMC on August 24. The final inspection was conducted and signed-off on by the County on August 27.

Family Movie Night

The new school term brings on the family movie nights again. This is a golden opportunity for kids and parents to meet other families and watch family movies on **Friday, October 9, and Friday, October 23, 7:00 to 9:00 p.m.**, at the Bridge Deck. There will be popcorn and juice served along with the movie. It is a great way for the kids to socialize and enjoy the evening.

Welcome North Bay Newcomers!

Carol Galvan / Karen Bloomer

Camano Lane

Don't Forget How Important Life Insurance is to Your Retirement Planning!

Halla Njalsson

Licensed Agent

Give me a call today!

360-643-0600

halla.njalsson@bankerslife.com

Bankers Life and Casualty Company

We specialize in seniors



05-B001



Craftsman Painting Company

Exterior and Interior Painting

Living in and serving Port Ludlow

Jeff Beres

(360) 301-4884

Bonded/Insured/Licensed
Lic. #CRAFTPC966B1

Bob & Clydene
Lloyd



360-301-4316
360-301-4318

"Two, Working for You"

We live, work & play in Port Ludlow—it's our life! And we'd be honored to take care of your real estate needs. Whether buying or selling, just give us a call! You'll find you've never been in better hands!

portludlowhomesandland.com

John L. Scott, 40 Teal Lake Rd. Port Ludlow, WA

Proud to be the peninsula's
only 5 Star Bank!*



First Federal

Making a difference. Together.


800-800-1577 ourfirstfed.com

Member FDIC




*Superior rating for financial strength and stability as determined by BauerFinancial, an independent bank rating firm. As of 8/31/09.

Bay Club/South Bay News

Judy Thomas, 437-7906, and Eva VanBuren, 437-7932, are the Bay Club editors. Submit articles to them by e-mail at judythomas2@yahoo.com or be4547@msn.com
Janet Force, 437-4019,
jandd@broadstripe.net, is the SBCA editor.
For information, call Linda Colasurdo at 437-2208.
 Denotes Bay Club members-only activity.

SBCA Board Meeting

Friday, October 2, 9:00 a.m.

Visit <http://plsbca.org/> for more complete information.
 All SBCA members are welcome. 

SBCA Update

by Dan Meade, President

The meeting of the South Bay Community Association (SBCA) Board of Directors was held at the Bay Club on Friday, September 4. Directors present were: Dave Armitage, Richard Grieves, Howard Koester, Dan Meade, Steve Shanklin, Sharon Walker and Chris Whitehurst. Mike Morgan and Linda Colasurdo of the Bay Club staff were also present. In addition 15 members attended.

Financial Report

Whitehurst reported the financial highlights for July, showing the Total Current Assets for the month to be \$409,977. Total Assets were \$626,415 with an increase of \$55,213. The Income Statement for July 2009 showed Total Revenues of \$81,507 and total Operating Expenses of \$29,999 with a Net Operating Surplus of \$51,507. The Maintenance Reserve is \$186,750 and the Renovation Fund is \$114,687. A motion was made by Whitehurst to move \$20,000 from last year's surplus to the Maintenance Reserve fund. Armitage said he felt the money should stay in operations in case it was needed for Iron Mountain studies. Moved, seconded and passed.

Correspondence

A letter was received from Lia and Neil Robinson thanking the Bay Club staff for its help with Port Ludlow Days 2009.

Committee Reports

Architectural Review Committee (ARC): Colasurdo reported there were two applications for view maintenance. Nine Village ARC applications were approved in August.

Operations: Morgan reported that the lighting project is finished and new tables have been purchased for the auditorium. Membership stands at 549 counting 31 associate members. Morgan reported that the incident with the young magazine salesman on July 11 was handled properly.

Drainage Committee: An e-mail was sent to members about a meeting to take place on September 23 at the Bay Club. Some members present stated the need for more information. However, that does not necessarily mean they want to join. Walker stated she sits on this Committee and that the intent of the Committee is to inform the public of the options.

Communications Committee: Shanklin reported that he had a meeting with portludlowtoday.com and was exploring how to work with them on opening another avenue that would allow the Board to reach its membership.

State Environmental Policy Act (SEPA) Committee:

Grieves said his Committee is working on issues concerning Iron Mountain Quarry (IMQ) permitting. Armitage, Val Pilmer and Bruce Schmitz attended these meetings. Grieves asked that the Board send a letter to David Johnson [Jefferson County] requesting an extended comment period. Further, the Committee wants the studies under discussion to take place before permits are issued. The Committee's request was approved unanimously and the letter would be sent on Saturday, September 5.

Land Swap: It does not look like a Land Swap decision is near. In a meeting between Department of Natural Resources (DNR) Commissioner Peter Goldmark and the Port Ludlow Village Council (PLVC) Community Development Committee on August 19, Goldmark said that major meetings with the public would take place in the spring of 2010 at the earliest. Also, he would not approve the swap if the Jefferson County Commissioners opposed it.

A major community meeting with Iron Mountain and Pope Resources is set for **Wednesday, October 14**, at the Bay Club from 4:00 to 6:00 p.m. This meeting is open to the public and all are encouraged to attend. It is expected the companies will discuss how the mine would be operated, the permitting process and mitigation steps that will be taken to lessen the effect of the mining on the community.

continued on next page

Update continued from previous page

This is the first time that residents of Port Ludlow will have an opportunity to hear directly from the owners of Iron Mountain, so all are urged to ask hard questions. It is expected that this meeting will be very heavily attended. Please carpool!

Emergency Preparedness

Tom Stone has been working hard to put together an effective Disaster Preparedness program for Port Ludlow. Tony Simpson, PLVC President, asked that SBCA join with the PLVC and other groups to help fund this effort [Community Emergency Response Team a.k.a. CERT training]. The Board approved \$250.

New Business

Meade stated that financial support for the *Voice* is solid. This has been an excellent relationship over many years. Both organizations are working to insure that the flow of information from the SBCA Board reaches its membership in the best way possible.

Koester asked to be the SBCA representative on the PLVC Board. Koester does his homework, is prepared, asks tough questions and makes a good contribution to the SBCA Board. We expect he will do the same in this position.

Issues on how “Letters to the Editor” might, or might not, be included in the *Voice* and how to ensure the accuracy of quoted material were discussed in a lively debate. We expect some changes in the way the South Bay’s column is presented in the *Voice*, including a standardization of formats so that the South Bay and North Bay formats look the same.

SBCA September Board Meeting Additional Items of Interest

by Jen Portz, Contributing Editor

The September meeting of the South Bay Community Association (SBCA) Board included these additional items of interest:

IMQ–SEPA Committee: The State Environmental Policy Act (SEPA) Committee developed a letter to be signed by the SBCA Board and sent to the Jefferson County Board of County Commissioners (BOCC) and the Department of Community Development (DCD) regarding the proposed Iron Mountain Quarry (IMQ) mining application. This letter outlined the Board’s support for extending the SEPA public comment period from the standard 14 days to 30 days to “allow for a more adequate review and comment by the citizens of our community.”

Additionally, the letter suggested, “... an Environmental Impact Statement (EIS) would certainly provide the best assurance of an impartial and thorough review of the potential environmental impacts of this project.” Further, if no EIS was required (as would be the case in a SEPA Mitigated Determination of Non-Significance or a Determination of Non-Significance) the County should require IMQ to conduct “several studies to establish appropriate mitigation for the mining activities” prior to the application’s approval. Specifically these studies were a Visual Impact Analysis; Species and Habitat Inventory and development of a Habitat Management Plan, Stormwater Pollution Plan; a Report on existing noise levels and a Supplement Noise Report for IMQ operation; a Mine Site Illumination Report: Light and Glare Analysis; a Transportation Report with Transportation Impact Analysis; a Hydro-geological Report: Groundwater Supply and Water Quality of Recharge; and a Wetland Inventory and Mitigation Analysis. With a minor change the Board approved the letter.

Emergency Preparedness: Tony Simpson, Port Ludlow Village Council (PLVC) President, opened a discussion regarding funding for a Community Emergency Response Team (CERT) training class to be held at the Port Ludlow Fire and Rescue (PLF&R) station. This class prepares people to more safely assist their neighbors during a natural disaster.

Simpson asked the Board to commit funds toward mitigating the individual cost of training (\$45 per person); each participant would pay \$20 while the remaining \$25 per person would be funded by donations from local organizations, specifically the PLVC, SBCA, Ludlow Maintenance Commission (LMC) and Port Ludlow Associates (PLA). Simpson requested the Board fund from \$250 to \$500 based on how many other organizations chose to commit funds. The Board voted to commit \$250. The first CERT training class for 40 people will run **Wednesday, October 7 through Saturday, October 10** at the PLF&R station. (See related article on page 24.) Those interested in attending should contact Tom Stone at tstone@cablespeed.com.

Clarification of Comments

South Bay Community Association (SBCA) Secretary and Treasurer Chris Whitehurst has requested that the *Voice* clarify the report of her comments at the August SBCA Board meeting. They concerned a discussion regarding a motion to establish a State Environmental Protection Act (SEPA) Committee that would include funding for scientific air and noise quality studies. Whitehurst stated

continued on next page

Clarification continued from previous page

spending SBCA money on such studies is not an appropriate expenditure of dues monies. She said the Board would have to go to the entire membership with a vote for a special assessment to cover expenses for such studies to be funded by the membership.

According to Whitehurst the Covenants, Conditions and Restrictions (CC&Rs) are specific about what "South Bay" and "Master Association Land" encompasses (Sections 1.31 and 1.4). Section 2.1 talks about property subject to the South Bay Declaration. Section 4 speaks of Lands Use Classification, how the Master Association (SBCA) shall have the right and responsibility for the proper and efficient management and operation of the Master Association Land, common areas and the recreational facility (Bay Club). It is Whitehurst's opinion that dues are collected for these matters alone.

The Board voted to form the SEPA Committee but not to fund the environmental studies.

Free Spirits to Hold Oktoberfest

There's still time to sign up for the Free Spirits fall event, "Oktoberfest," on **Saturday, October 17**, at the Bay Club. Six o'clock p.m. is the time for cocktails and appetizers; 7:00 p.m. is the time to eat dinner. The cost is \$17 for members and \$24 for non-members.

The last day to sign up is **Saturday, October 10**. Non-members may begin signing up on **Saturday, October 3**. If you haven't yet joined Free Spirits or you haven't renewed your membership, you may do so when you sign up. Don't miss the fun! 🍷

South Bay Members' Social

Our next South Bay Members' Social event will be at the Bay Club on **Friday, October 9**, at 5:00 p.m.

Please bring an appetizer to serve with provided beverages. See you there! 🍷

New Members in South Bay

Tom and Myra Cardella have joined South Bay in Ludlow Point Village 1.

Welcome!



- Landscape Design
- Thumbnail Sketches
- Construction of Small Buildings, Decks, Fences
- Retaining Walls
- Skid Steer With All Attachments, Dump Vehicle, All Tools & Equipment.

INCLUDING Two Hard Workers \$39 per hour

Jack & Denise Wright 208.420.8490



**The *Best* address for Port Ludlow
real estate is www.karenbest.com**

Karen Best
The Best Team
360.437.2278
9522 Oak Bay Rd., Port Ludlow

**COLDWELL
BANKER**
TOWN & COUNTRY



DANA POINTE INTERIORS Inc.
AT PORT LUDLOW

IMAGINE

Interior Design • Carpet-Tile-Stone
Window Coverings • Draperies

360 437-2060 email danapointe@olypen.com
www.danapointeinteriors.com

Help Wanted at the Voice

The **Voice** needs reporters to cover meetings, hearings and local events; writers for feature articles and proof readers.

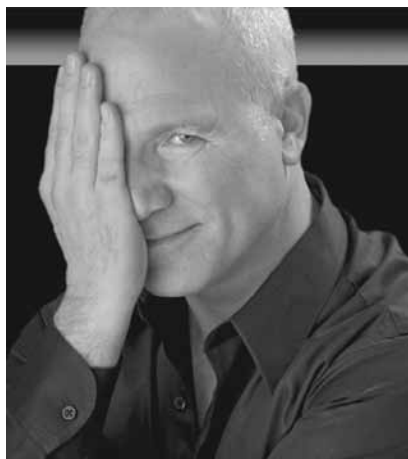
**Call Bev Browne, Editor, 437-8099
or e-mail brownnew@bus.orst.edu**

Arts and Entertainment

This section features news on Port Ludlow arts and entertainment events as well as a performing arts calendar for Jefferson, Clallam and Kitsap Counties. Submit news and calendar items to Beverly Rothenborg, editor, at bevrothenborg@broadstripe.net by the 10th of the preceding month.

Performing Arts Gala Opening with Broadway's Franc D'Ambrosio!

by Barbara Wagner-Jauregg



The man behind the iron mask, Franc D'Ambrosio.

Submitted photo

The Arts Council Board members and its dedicated group of volunteers invite you to join them in celebrating the opening of the 18th season of Performing Arts in Port Ludlow, **Saturday, October 3** at the Bay Club. The gala party gets underway at 7:00 p.m. with traditional opening night champagne paired with a variety of appetizers.

As you arrive at the Bay Club, you'll be welcomed by greeters dressed in Port Ludlow elegance who will help make this a special night—that begins with the party, then a concert featuring “Franc D'Ambrosio's Broadway,” capped by a very special showing of photography by the award-winning Gary Settle of the Artists' League.

Franc D'Ambrosio is best known for his role in the stage version of Andrew Lloyd Webber's *The Phantom of the Opera*, for which he earned the title, “The World's Longest Running Phantom,” after completing over 3,000 performances, including the national tour and the San Francisco run of over five years. Earlier he had been discovered by Francis Ford Coppola and selected to fill the part of Anthony Corleone, the opera-singing son of Al Pacino and Diane Keaton in *The Godfather III*. D'Ambrosio had the honor of singing the Academy Award winning theme song, *Speak Softly Love* on the original motion picture soundtrack.

“Franc D'Ambrosio's Broadway” is a celebration of the music that has established Broadway as an American art form. With the success of his 3-year, 150-city, sold-out tour with this one man show, D'Ambrosio has joined the ranks of the famed Michael Crawford and Sarah Brightman, as one of the handful of Phantom alumni to successfully cross over into a flourishing solo career. The CD *Franc D'Ambrosio's Broadway* earned a Grammy Consideration for Best Traditional Pop Vocal Album 2005.

As a Kansas high school student with a part-time job working in the photo lab at his hometown newspaper, Gary Settle found a way to photograph big-name musicians as they passed through town for performances. His camera got him close enough to see Harry James and Buddy Rich, Lionel Hampton and Liberace making their music. In college, he was able to photograph Stan Kenton, Duke Ellington, Louis Armstrong and Dave Brubeck, close enough to watch them play their notes. “I love all kinds of moving music,” Settle says, “and being able to watch a musician work as he plays lets me share in his creative experience.”

During a 45-year career in photojournalism, Settle worked at seven newspapers from Kansas to Chicago to New York and finally to Seattle. In 1968, at *The Chicago Daily News*, he was named Newspaper Photographer of the Year. Soon hired by *The New York Times*, he won that title again in 1970. He was president of the National Press Photographers Association in 1978-79. Now retired in Port Ludlow with his wife Patti, he's been enjoying the less demanding imperatives of retirement, which has included stalking wildlife in their wooded back yard.

Seven-concert season subscriptions at \$122.50 are still available as well as six-concert Flex Passes at \$111. Individual tickets to the opening night performance of “Franc D'Ambrosio's Broadway” are \$20. Packages and individual tickets can be purchased at the Bay Club or by mail. Send a check and stamped self-addressed envelope to P. O. Box 65210, Port Ludlow, WA 98365. To check on ticket availability, call the Club at 437-2208. For on-line credit card purchases, go to www.brownpapertickets.com.

Violin and Piano Concert

Join Alan and Sandy Rawson for the first program of their 2009-10 concert season at their Chimacum home, presenting music by the renowned Romanian composer, Georges Enesco (Enescu). The two concert dates are **Friday, October 2 and Sunday, October 4**, both at 2:00 p.m.

The program begins with two early romantic and lyrical works seldom heard today, the *Ballade* (1895) and *Impromptu Concertante* (1903). Was it sentiment expressed in these works that first inspired the lifelong love affair with the Princess Cantacuzino, the future queen of Romania?

Following these will be one of Enesco's most famous orchestral favorites, his *Romanian Rhapsody* in A Major, Op. 11, No. 1, arranged for violin and piano. It is truly an infectious and spirited piece winding into a hyperventilated romp of Gypsy whirlwind.

Concluding the program will be the composer's original *tour de force* for violin and piano, the *Sonata Op. 25* (1926). This is one of the most detailed, classical studies of Gypsy violinist nuance and technique of all time, prefaced by exacting instruction by the composer. The Rawsons have performed this a number of times, and it is one of their absolute favorites. Many years ago Alan explored this piece as his final doctoral lecture/recital project at the University of Colorado.

And, of course, not to be overshadowed with her musical talent, Sandy will be expressing her culinary skills with authentic Romanian reception treats to follow the program.

Admission is by advanced paid reservation of \$22 per seat and seating is limited. RSVP as soon as possible to see if space still is available for these popular events. Contact Alan Rawson, e-mail rawson@waypoint.com or phone 379-3449. Checks should be made payable to Dr. Alan Rawson and mailed to 10318 Rhody Drive, Chimacum, WA 98325. Upon payment receipt a confirmation will be sent with instructions. For more information about the Rawsons and their musical activities, visit www.mnstate.edu/rawson/oysters.

Hot Ticket Tuesdays!

Beginning **Tuesday, October 20**, and subsequent Tuesdays from 11:00 a.m. until 2:00 p.m., tickets for an upcoming show at the Admiral Theatre will be discounted 50 percent. The discounted show is a secret until Tuesday morning.

Go in person to the Admiral Theatre Ticket Office, 515 Pacific Avenue in Bremerton, for half-price tickets to one of their great shows.

Fright Night Concert


Join the Port Townsend Community Orchestra for its fall concert on **Saturday, October 31**, 7:30 p.m., Chimacum High School Auditorium. Arrive at 6:45 p.m. to enjoy a pre-concert conversation with Maestro Dewey Ehling. The orchestra will be performing in their scariest Halloween costumes and they are hoping that audience members who feel inspired to dress for the occasion will join in the fun!

The evening features a number of pieces appropriate to the occasion: *The Toccata in d minor* by Johann Sebastian Bach; *Funeral March of a Marionette* by Charles Gounod; *In the Hall of a Mountain King* from *Peer Gynt Suite No. 1, op. 46* by Edward Grieg; *Danse Macabre* by Camille Saint-Saens and *March to the Scaffold* from *Symphonie Fantastique* by Hector Berlioz.

The featured artists for this concert are Beatrice Kaufmann-Monohon and Arthur Grossman, bassoonists. Grossman is the former Professor of Bassoon at the University of Washington and bassoonist with the Soni Ventorum Wind Quintet. Beatrice is the principal bassoonist for the Port Angeles Symphony Orchestra and studies music with Mr. Grossman. They will perform the *Concerto for Two Bassoons* by John B. Vanhal.

The concert closes with the lovely *Les Preludes* by Franz Liszt, the third of his twelve Symphonic Poems. Directed by Liszt himself, the work was premiered in 1854.

Port Townsend Community Orchestra is supported by generous contributions from its patrons and from local businesses. Admission is free and donations are appreciated. Children are welcome. Visit the orchestra's website, www.porttownsendorchestra.org, for additional information.



Four great reasons to call Coldwell Banker:

Ron Helmonds, Nancy McConaghy,
Bill Roesler, Karen Best

Buy - Sell - Rent

9522 Oak Bay Rd. Port Ludlow 360-437-2278
www.olympicpeninsularealestate.net

COLDWELL BANKER
TOWN & COUNTRY

Performing Arts Calendar

Thursday and Friday, October 1 and 2

WordPlay is a staged reading of Arthur Miller's *The Price*, 7:00 p.m., at Key City Public Theatre, Port Townsend, Thursday at 7:00 p.m. and Friday at 8:00 p.m., 385-7396, www.keycitypublictheatre.org.

Friday and Sunday, October 2 and 4

Listen to the romantic and lyrical music of Georges Enesco performed on the violin and piano by the Rawson Duo at their home in Chimacum, 2:00 p.m., advanced paid reservations required, 379-3449, e-mail rawson@waypoint.com.

Fridays, Saturdays, and Sundays, October 2 through 11

Crimes of the Heart is a brilliant comedy, winner of the Pulitzer Prize and Drama Critics Award, which examines the plight of three sisters with infectious high spirits, heart, wit and a passion for life, love and laughter, Jewel Box Theatre, Poulsbo, 8:00 p.m. and 2:00 p.m. on Sundays, 360-697-3183, www.jewelboxpoulsbo.org.

Saturday, October 3

Franco D'Ambrosio's Broadway, Performing Arts in Port Ludlow Season's Champagne Opening Party and Performance, sponsored by the Arts Council and featuring "The World's Longest Running Phantom," with up tempo medleys and heart-rending show tunes sung by this powerful tenor voice, party and seat selection 7:00 p.m., concert at 8:00 p.m., Bay Club, www.francoambrosio.com.

Saturday, October 3

PT Shorts presents "Writers Touched with Fire: Great Literature by Authors with Mental Illness," 7:30 p.m., Pope Marine Building, Port Townsend, free admission, 385-7396. Readings of literary works are presented in conjunction with the monthly Gallery Walk, www.keycitypublictheatre.org.

Saturday, October 3

The Water is Wide is an evening of songs, stories, dances and poems concerning sailors, boats and voyages across the waters, 7:30 p.m., Key City Playhouse, Port Townsend, 385-7396, www.keycitypublictheatre.org.

Saturday, October 3

Nothing The EDGE does at Bainbridge Performing Arts is scripted—the improv troupe members are literally making it up as they go along based on suggestions from the audience, 7:30 p.m., 206-842-8569, www.BainbridgePerformingArts.org.

Wednesday, October 7

The Old Crusty Minstrels present a benefit sing-along for Key City Public Theatre and its youth education program with a sneak preview of *Scrooge*, *The Musical* and fabulous door prizes, 6:30 p.m., Upstage Restaurant, Port Townsend, \$5 suggested donation, 385-7396, www.keycitypublictheatre.org.

Friday, October 9

Escape the humdrum to a fantasy of lithe bodies glimpsed through swirling silk when exotic dancers perform The Art of Bellydance at the Admiral Theatre, Bremerton, dinner at 6:30 p.m. and show at 8:00 p.m., 360-373-6743, www.admiraltheatre.org. To participate in a one-hour workshop at 3:00 p.m. before the show, call 360-373-6810 to reserve your spot.

Fridays, Saturdays, and Sundays, October 9 through 25

Based on the Mel Brooks film of the same name, *The Producers* won a record-breaking 12 Tony Awards on Broadway, Bainbridge Performing Arts, 7:30 p.m. and 3:00 p.m. on Sundays, 206-842-8569, www.BainbridgePerformingArts.org, "Pay What You Can" preview on **Thursday, October 8**, 7:30 p.m.

Thursday, October 15

Stand-up comedy night, benefit for Key City Public Theatre, 8:00 p.m., Key City Playhouse, Port Townsend, general admission \$15 and VIP tickets at \$25 include two drinks and priority seating, 385-7396, www.keycitypublictheatre.org. Advance tickets at Quimper Sound and Media, 230 Taylor Street, Port Townsend.

Friday, October 16

Piedmont Blues guitar music is unmatched in its universal appeal. During an Intensive at Centrum, the instructors offer this concert, 7:30 p.m., Joseph F. Wheeler Theater, Fort Worden, Port Townsend, 385-3102 X110, www.centrum.org/blues.

Friday and Saturday, October 16 and 17

The Port Angeles Chamber Orchestra Series offers works written for smaller musical ensembles in a more intimate setting. This concert offers Honegger's *Concerto da Camera* for flute and English horn as well as a Schubert piano duet and Bach's *Concerto in d for Piano and Orchestra*, 7:30 p.m., Friday at 7:30 p.m., Holy Trinity Lutheran Church in Port Angeles and Saturday at Sequim Worship Center, 360-457-5579, www.portangelessymphony.org.

Sunday, October 18

This concert will feature the Navy Band's Cascade Big Band at the auditorium of the Naval Undersea Museum, Keyport, free admission, 360-315-3448, www.navalunderseamuseum.org.

Friday and Saturday, October 23 and 24

Guitarist-singer-composer Leo Kottke will perform solo concerts that mark his first visit to the area in over five years, Friday at 8:00 p.m., Port Angeles High School Auditorium, www.leokottke.com, and Saturday, Admiral Theatre in Bremerton, 360-373-6743, www.admiraltheatre.org.

Saturday, October 24

The season premiere of the Bremerton Symphony will take the audience to Middle Europe, traveling with homegrown guest artist Irene Bowling, featured on Schumann's *Piano Concerto* plus music by Dvorak and Mozart, Bremerton High School Performing Arts Center, 360-373-1722, www.bremertonsymphony.org.

Wednesday, October 28

It's a Monster Bash—games and a haunted house await all pint-sized people who enter. Children age six and under (and parents, of course) best enjoy this party that begins at 6:30 p.m., Admiral Theatre, Bremerton, 360-373-6743, www.admiraltheatre.org.

Friday, October 30

As the former front man for The Byrds and an accomplished singer-songwriter and guitarist, Roger McGuinn has been performing American folk music traditions for nearly four decades, dinner 6:30 p.m., show 8:00 p.m., Admiral Theatre, Bremerton, 360-373-6743, www.admiraltheatre.org.

Arts Calendar continued from previous page

Saturday, October 31

Pianist and composer Geoffrey Keezer draws on 20 years' experience touring and recording with the greatest artists in jazz. After a Centrum workshop, he offers a solo piano concert, 7:30 p.m., Joseph F. Wheeler Theater, Fort Worden, Port Townsend, 385-3102 X110, www.centrum.org/jazz.

Saturday, October 31

Join the Port Townsend Community Orchestra for this "Fright Night" program of music that includes Gounod's *Funeral March of a Marionette*, *Danse Macabre* by Saint-Saens, *March to the Scaffold* from *Symphonie Fantastique* by Hector Berlioz and also some Bach and Liszt, 6:45 p.m. pre-concert conversation, 7:30 p.m. concert, Chimacum High School Auditorium, www.porttownsendorchestra.org.

Discounted Group Tables Now Available at Arts Council Concert

Whether it's a Newfoundland Kitchen Party or a French Bistro Café, Arts Council cabaret nights are always lots of fun. Tables of eight provide an opportunity to enjoy wine, beer and snacks in the company of friends and neighbors, all the while enjoying an upbeat, lively concert.

The Arts Council is pleased to announce a new group program for clubs and organizations. Tables of eight for the upcoming Cabaret Night with Van Django's Hot String Jazz are now available at a discounted price. When an entire table is purchased for \$148, members enjoy a discount of \$1.50 on each ticket as opposed to the individual ticket price of \$20. In addition, group tables will be in the reserved "Subscriber Section." The only caveat, the entire table must be purchased with one check and no refunds will be given.



Speakeasy Bill McCaughey, circa 2008.

Photo by Gary Settle

The Bay Club will be converted to a speakeasy for the next Cabaret Night **Friday, November 6**. Van Django, an acoustic string ensemble whose music is well rooted in the Gypsy jazz of 1930's Paris, will be the featured performer. Formed in 1998, this award-winning quartet includes some of Canada's most talented and eclectic musicians—such as violinist Cameron Wilson, who was here with The Joe Trio. A Van Django concert contains flights of dazzling fancy, driving rhythms and boundless creativity as they toss off jaw-dropping technical licks with effortless ease. Beverage service is available at 7:00 p.m.; the concert begins at 8:00 p.m.

So take note homeowner associations, golfing and boating groups, singles, artists, computer users and service groups—plan an outing with fellow members that is only 5-10 minutes from home! To arrange for group tables, call Jane Navone at 437-0324. Tables are limited and should be booked early. Your group will be acknowledged during the pre-concert remarks. Please Note: Group Sales are only handled through Jane, not at the Bay Club.

Sunshine's Painting & Helping Hands

★ Moving In or Out? You Call, We Haul

Clean and Paint & *We Do Colors!*

★ Complete Make-Readies for Rentals or Sellers

Ask about our Rent-A-Painter service:

Our tools & equipment, our license & insurance –
Your project, by the hour, day or week

(360) 301-1845

Senior Discounts!!
Lic # SUNSHPH932DB


Windermere
Port Ludlow

Here to provide you with excellent service.

We now offer property management services.

Contact us at **360•437•1011**

or stop by and visit us at

9526 Oak Bay Road, Port Ludlow

(Next door to Snug Harbor)

Port Ludlow Associates

Developer News

by Diana Smeland, Port Ludlow Associates, President

The good news is that the reporters are beginning to talk about recovery. The medium news is that Port Ludlow usually is a little behind the recovery. Of course, the good news is that we are usually a little behind the down slide, too.

Referrals: Port Ludlow Associates (PLA) has a contract on Olympic Terrace 16, which leaves us only three homes available. Do you know that many of our home sales in Port Ludlow come from you? Referrals are the best way to sell real estate, especially in today's market. We have a few amazing, never lived in, new construction homes that are available today. These deals will probable never be seen again in Port Ludlow. Call all your friends and let them know that we live in paradise; maybe they would like to, also.

Real Estate: You are probably wondering what Brent Sasse, Construction Manager, is working on. He has been very busy with remodels. No project is too large or too small, so if you have something you want to remodel, now is the time. Contractors are hungry to work, which equates to a good price to the homeowner. With the good news about recovery, the contractor's workload may be picking up. Complete those projects now.

You may also be wondering what happens if you refer someone, and they want a newly constructed home. We are always looking to build someone's dream home, either on his or her land or ours. There are a lot of opportunities currently for custom homes to be built in Port Ludlow with lots available on Ebb Tide Court and in Olympic Terrace. I would love to hear from you with questions that I could answer in my column.

We continue to look forward to meeting with groups and residents to share ideas or deal with any expressed concerns about Port Ludlow's future. If you have questions or would like to meet, please call me directly at 437-8342 or send me e-mail at dsmeland@portludlowassociates.com.

Resort News

by Paul Wolman, General Manager, The Inn At Port Ludlow

Twenty-nine Dogs and Their Masters Learned Everything about Puppucino:

A "Puppucino" is a sort of Cappuccino made just for pooches. We prepared it with non-fat steamed milk and

a handcrafted dog treat that is natural and gluten free. We saw all kinds of dogs enjoying the special. We had a visit from a 6-pound Chihuahua along with a 127-pound mixed Great Dane and Boxer. All our four-legged friends loved the Chef Dan Special.

Speaking of Chef Dan Specials, read further to learn about the happenings in October.

Fireside Specials and Themed Dinner Nights

Daily: Thank Goodness it's Time to Relax, Happy Hour, 2:30–5:00 p.m.

Saturdays and Sundays: Fireside Weekend Brunch, 8:00 a.m.–3:00 p.m.

Sunday Dinner: "Half Price Wine." Don't be afraid to order a rare wine from our wine list—it's 50 percent off.

Mondays: Buy two entrées, and the less expensive one will be half off. (Valid only for the regular Fireside dinner menu; not applicable on the Fireside Grill menu.) BYOB (Bring Your Own Bottle) and the corkage fee is on us.

Tuesdays: "Paris Comes to Your Table." A four-course Parisian Bistro Dinner for \$22 per person plus tax and gratuity, or for \$24 each we will pair your meal with wines—a glass of vintage white with the starter and a glass of great red with your entrée. Reservations are suggested from 5:00–9:00 p.m. The regular menu is served as well.

Wednesdays: New! New! Burger Night! Chef Dan has created a fantastic Burger Menu for you to enjoy on Wednesdays. Every Wednesday, on and above our regular menu, we are now serving seven different styles of burgers; it's almost like "Burger Trip Around the World."

Half Price Wine" Don't be afraid to order a rare wine from our wine list—it's 50 percent off!

Thursdays: "Cena Con la Famiglia Ed Amici" (Italian Family Dinner). Bring your family and friends (minimum four guests) and enjoy a genuine four-course Italian dinner. You'll discover Tuscan soups, risottos from Lombardy, polenta and pasta from the Veneto, entrées from Emilia-Romagna and desserts from Sicily and other provinces. The cost is \$68 for a party of four, \$17 for each additional guest (free for children under five). For \$88 we will pair your meal with a glass of vintage white wine with the starter and a glass of great red with your entrée. A regular menu will be served as well.

continued on next page

Resort News continued from previous page

Reservations are recommended for these Daily Specials from 5:00 to 9:00 p.m. Please call Paul at 437-7074.

The Fireside Restaurant—

Breakfast, Lunch and Dinner Daily:

Country Style Breakfast: 8:00–11:00 a.m.

Brunch, Saturdays and Sundays: 8:00 a.m.–3:00 p.m.

Lunch: 11:00 a.m.–2:00 p.m.

TGI's Time To Relax (Happy Hour): 2:30–5:00 p.m.

Dinner: 5:00–9:00 p.m. (Sunday to Thursday)

Dinner: 5:00–10:00 p.m. (Weekend)

We look forward to welcoming you to The Fireside! For inquiries and reservations, please call 437-7000.

Upcoming Events – Save the Date! Wednesday, October 16, 6:00 p.m., An American in Paris

You all remember Grace Kelly, Cary Grant, Vincent Price and George Gershwin. They all had something in common. They loved Paris and its secret Food Temples. Our evening will be inspired by the most famous eateries ever created on Earth: “La Tour d’Argent,” “Lucas Carton,” “Laserre” and “Le Grand Véfour.”

This will be a five-course dinner prepared by Chef Dan, paired with elegant and rare wines. The cost for this dinner will be \$49 per guest. Reserve now; call Paul at 437-7074. There only are a handful of seats available!

A Day with Chef Dan

Friday, October 16

9:00 a.m. to 1:00 p.m.

An Homage to Fall



Chef Dan will have fun giving you tips on how to buy, prepare, cook and serve game and birds.

Perfect for the season, and all this without loading your guns.

Chef Dan will teach you how to prepare some of the most dramatic dishes, and you will follow him to an exotic world of wild delicacies.

Each course will be enjoyed with a different wine paired by Paul, your host.

Students will learn the fun and importance of the complement between food and wine.

Classes will be offered once a month, \$45 for local residents.

Space is very limited. Contact Paul now at 437-7074.

Mariners' News

Dock Talk

by Kori Ward, Marina Manager

The Season

I would like to give a special thanks to the Marina staff: Gary Hansen, Janice Hansen, Jackie Lecuyer, Race Malin, Kathy Powell, Jane Richardson and Ashley Smiley. Thank you for all your hard work and dedication through this successful 2009 summer season.

The Winds Will Blow

It is important that each slip holder read and acquaint themselves with storm planning and the preparations needed to be ready. In addition, each slip holder is reminded to have copies of their current insurance policy on file with the Marina office. All too often, slip holders do not understand the responsibilities and liabilities associated with damages caused by their boat until it's too late. So, be smart, be diligent, be insured and be “Storm Ready.”

Snowbirds

If you are leaving the area this winter, please stop by and update your emergency phone numbers. It is best to have someone checking your vessel regularly. The Marina staff makes habitual dock walks, but we have no way of telling if something is amiss on board.

Welcome Aboard New Marina Tenants

Please help me welcome our new tenants to Port Ludlow Marina:

- Jim Brown, 24-foot Grady White, *Andiamo*
- Mike Cable, 31-foot Silverton, *Just Right*
- Mike and Pinky Hamilton, 40-foot Nordhavn, *Skeena*
- Gale and Peggy Kulm, 32-foot Zeta, *Ally Cat*
- John Wright, 50-foot Windward Marine, *Trumpeter*
- John Weaver, 43-foot North Pacific, *Sea Nile*

October hours are 9:00 a.m. to 4:00 p.m., seven days a week.

Speed Limit in Port Ludlow Bay

5 mph

No Wake, It's the Law!



Tide and Timber

From the Desk of the D.O.G.

by Vito De Santis, P.G.A. Director of Golf

It's that time of year again. Aerification of Port Ludlow Golf Course greens will begin the first week of October. Preventative maintenance is an integral part of successful golf course management. Golfers view aerification as an inconvenience that takes the greens out of play for a day, pulling cores from the greens and leaving holes that can affect putting for many days before healing. Each year I am asked why we need to aerify and what it accomplishes.

Aerification achieves three important objectives: It relieves soil compaction, it provides a method to improve the soil mixture around the highest part of a green's roots, and it reduces or prevents the accumulation of excess thatch. The quality of a good putting green is more than skin deep. The condition of a green has a lot to do with what goes on below the surface. In order for grass to grow at optimal putting height, it must have deep, healthy roots. Good roots demand oxygen. In good soil, they get the oxygen from tiny pockets of air trapped between soil and sand particles.

Aerification is a mechanical process that creates more air space in the soil and promotes deeper rooting, thus helping the grass plants stay healthy. In most cases, it's done by removing 1/2-inch cores (those plugs you sometimes see near a green or in fairways) from the compacted soil, allowing for an infusion of air and water that brings a resurgence of growth. The spaces are then filled with sand "top dressing" that helps the soil retain air space and makes it easier for roots to grow downward.

We thank everyone for his and her patience during this time. Remember that PGA Tour legend Tom Watson once shot a sizzling record 58 at his then-home course, Kansas City Country Club, just days after the greens had been aerified.

PLWGA Winds up Season

by Turney Oswald, Scribe

With a glorious summer behind us, it's hard to believe that the regular golf season is drawing to a close. Some of us head south, some of us don winter wear and continue to play all winter but, for the brave souls who become next year's officers of the Port Ludlow Women's Golf Association (PLWGA), organizational work begins. It's a

good time to extend thanks to our able Captain of 2009, Sandie Yonke, to Co-Captain Peggy Selby, Secretary Cyndy Kelly, Treasurer Linda Aho and the twenty gals who chaired various tournaments and events this year.

One of many highlights this year was the annual Gals Getaway in September to courses south of us. It included a visit with our friend and former pro, Dave Ramsay, at his course in Chehalis. The gals played golf at Indian Summer in Olympia, Riverside in Chehalis and Hawks Prairie in Lacey over the three-day outing.

Congratulations to our club champion, Lucinda Thompson for her fourth win. Other winners of the August tournament will be recognized at the annual Awards Banquet on **Wednesday, October 21** and published in the November *Voice*. Carol Katuzny is in charge of the end of the season luncheon and ceremony to be held at the Bay Club.

The following week there will be a fun closing day of golf on **Tuesday, October 27** with lunch afterwards at Niblick's. Visit Niblick's during the winter; the staff has gone out of their way for us all season.

TOP (Teams of Peninsula) also ends its season with a Fun Day of play at Sunland in Sequim that will include all clubs involved in the competitions. Lucinda Thompson cheered our team on as TOP Captain all season.

Golf as a sport and our ladies group, in particular, allows us to remain active, laugh, keep our minds involved and experience friendship. If you want to play during the winter, consider Tuesday a day to show up, form up a foursome, and stay for lunch. Buy some fleece, get some hand warmers, and stay active! Oh, you might need some boots, too! And rain pants.

News from the Niners

by Beverly Browne, Publicity

The ladies have scheduled some interesting games to close out the 2009 season. On **Thursday, October 1** they will score Fairway Shots on Tide. On **Thursday, October 8** there will be a shotgun at 8:30 a.m. on Timber. The game is Throw Out. After play the ladies will lunch in Port Townsend at the Belmont. Car-pooling is always a good option. The last game of the season on **Thursday, October 15** is a couples' shotgun, October Surprise. The shotgun starts at noon. There will be a banquet at the Bay Club at 5:30 p.m. Expect tasty appetizers, salads, a choice of main courses and a sumptuous dessert.

continued on next page

Niners continued from previous page

Although October is the official end of the season, this year the officers have planned an additional social. Please save **Sunday, December 6** at 1:30 p.m. for this social. Details will be published later.

The schedule for the gentlemen is as follows:

- **Thursday, October 1** – The Ludlow Challenge on Timber at 8:33 a.m.
- **Thursday, October 8** – Best Ball Pinehurst on Tide at 8:33 a.m.
- **Thursday, October 15** – Couples' shotgun and banquet at the Bay Club

The schedule is subject to last minute changes. Always check the Internet and/or the posting at the Pro Shop to confirm your starting time and the course. Remember to sign up before Wednesday and try to arrive half an hour early to set up and get to your tee.

MGA Announces Winners

by John Cragoe, Captain

The major event of the past month was the annual Men's Golf Association (MGA) Club Championship, a 54-hole event held over three days. This year's MGA Club Champion is Bob Smith, whose steady play won the tournament with a combined total of 232 over the three rounds. Flight winners included: Blue Flight I – Don Thompson was low gross leader at 241 and Bob Asbell posted the low net total of 217. In Blue Flight II, Jack McKay was low gross winner at 260 and Doug Herring carded the low net of 216. White Flight winners were: Larry Ball with a gross score total of 242 and Darrell Grything was the low net with a 213. It should be noted that Bob Smith has now won the Club Championship tournament a total of four times.

In other events since last month's report:

- On August 12 the event was a 6-6-6 Team event, in which the two best balls of each combination of four players divided into two-man teams were scored. The winning team was made up of Darrell Grything, Doug Herring, Jim Laker and Bob Smith. The two best ball score was 122, five strokes better than their closest competitors.
- The final event of August was a Two-Man Best Ball game. The team of Ken Baldwin and John Main with a net score of 63 won the Blue Flight. In the White Flight, the winners were Larry Ball and Ken Snider, who combined for a net 57, one of the lowest team scores of the year.

On September 9, the annual Ludlow Cup Matches were played. During the season, each member of the MGA earns Ludlow Cup points for participation and performance. The top 24-point earners then are divided into Port and Starboard teams for match play similar to the Ryder Cup format. This year's Ludlow Cup winners are the Port Team of Bob Asbell, Ken Avicola, Larry Ball, Dan Holtz, Joe Kelly, Jim Laker, Dick Ostlund, Roger Reighard, Norm Shisler, Don Thompson, Myron Vogt and Jim Watson.

Regular MGA events coming up include the annual Medal Tournament for those who qualified during the season on **Wednesday, October 14**; all others will play in an individual event. On **Wednesday, October 21**, a Two-Man Best Ball event also serves as the final game for the season-long Eclectic Tournament. The season's final event comes on **Wednesday, October 28**, an Individual Low Net game in which players are limited to no more than five clubs.

Lastly, be sure to mark your calendars for the final awards dinner and raffle on the evening of **Wednesday, October 28** at the Bay Club.

Oriental Rug Cleaning Hand Washing & Repair

R.H. KOLLER

360-779-1775

for more information visit us at
www.rhkoller.com

Pick up and Delivery Available



John S. Pizzo
Computer Consulting
PC or Mac

360-379-0961
John@PizzoConsulting.com
www.PizzoConsulting.com

*Taming your computer nightmares with patience,
humor, and years of professional experience*

Chamber of Commerce

Chamber News

According to information published in *The Leader* and *Peninsula Daily News*, steps have been taken to form a joint Jefferson County Chamber of Commerce. The Treasurers of the Port Townsend, Tri-Area and the Port Ludlow Chambers are sharing comparative data regarding financial and membership information specific to the individual organizations. Once the Treasurers provide a formal written or verbal report to the Chamber Connections Committee, the Committee will be able to continue the consolidation talks. The final merger decision is expected in 2010.

During this time banking, administrative and receptionist duties will be taken over by the professional staff at the Port Townsend Chamber. The Brinnon-Quilcene Chamber is considering membership but as of this writing is independent.

A critical issue that remains unresolved is the fate of the City and County bed-tax money. The money comes to the Port Townsend Chamber from the City of Port Townsend and to the Port Ludlow and Port Hadlock Chambers from Jefferson County. The Port Ludlow Chamber received \$5,600 from bed-tax last year as reported by the County Lodging Tax Advisory Committee to the County Commissioners. It is proposed that both the Port Ludlow and Tri-Area Chambers will contribute 15 percent of revenues to the Countywide Chamber. Port Ludlow and Tri-Area Chambers plan to alternate meeting places with each area having three meetings a year.

Several advantages are expected from the merger. Members will pay the price of one membership but become members of all three Chambers. The merger is expected to foster better cooperation and communication between the Chambers and better understanding of city versus rural business issues. Voting will be equal among Chambers, which should provide the smaller Chambers with more representation. A single website for all three chambers has been proposed and there are other cost advantages to the merger.

Current Chamber Members

If you do not find your business name somewhere within the list on the adjacent column, then you are not within the Port Ludlow Chamber loop!

Port Ludlow Businesses:

Active Life Physical Therapy; American Marine Bank; Community Enrichment Alliance (CEA); Craftsman Painting Co.; Dana Point Interiors, Inc.; Duane Anderson, CPA's; Edward Jones; Grace Christian Center; Hear for Life Audiology, LLC; The Inn At Port Ludlow; Jim Posey Insurance Services, LLC; Kathie Sharp Piano Studio; Karen Best & the Best Team/Coldwell Banker Forrest Aldrich; Kathy Larkin & Associates PS; Kitsap Bank; Ludlow Bay Massage & Wellness Spa; Ludlow Mortgage, Inc.; Ludlow Bay Realty; Mats Mats Chiropractic Clinic; Madrona Hill Urgent Care; Olympic Peninsula Gateway Visitors Center; Port Ludlow Artists' League; Port Ludlow Arts Council; Port Ludlow Community Church; Port Ludlow Fire & Rescue; Port Ludlow Place Commercial Office Rental (Rolling Bay); Port Ludlow Plumbing; Port Ludlow Village Council; Port Ludlow Village Store; *Port Ludlow Voice*; The Resort At Port Ludlow; Therapeutic Facials; Timothy D. Caldwell; Windermere Port Ludlow and Yacht Management & Services, Inc.

Port Hadlock/Chimacum Businesses:

Edward Jones Investments, Inn at Port Hadlock, Mountain Propane, Northwest School of Wooden Boatbuilding, and Shold Business Park.

Port Townsend Businesses:

All About Escrow; Dave The Computer Doctor; First Federal Savings & Loan; Jefferson County Land Trust; Jefferson Title Company, Inc.; Kristin Manwaring Insurance Associates, Inc.; *Port Townsend & Jefferson County Leader*; Port Townsend Computers, Inc. and Port Townsend Paper Corp.

Quilcene, Sequim, Port Angeles and Poulsbo:

Gardiner Gardens, Home Instead Senior Care, Olympic Music Festival, Orbea Sign Company (Poulsbo), and *Peninsula Daily News*.

If you find your business name within this special troop, have you met or do you know at least one business representative from the others in the group? If not, watch for information regarding your next opportunity for networking!

And speaking of networking, invite other business associates, your best friend, your neighbor, your family members, and/or your homeowner association to join the Port Ludlow Chamber.

The annual dues for 2010 is \$80 unless paid before the end of 2009. The year-end discounted amount is \$72. For more information contact the Chamber at info@portludlowchamber.org.

Regional News

Northwind Activities

October is Art Port Townsend month, a celebration connecting the arts to the community. The Port Townsend Arts Commission and Northwind Arts Alliance will present "Expressions Northwest," the 11th Annual Art Port Townsend Juried Art Competition from **Friday, October 2 through Sunday, November 1**. Curator this year is Jess Van Nostrand, an independent curator and the Exhibitions Curator for Cornish College of the Arts in Seattle. She has been creating exhibitions with a focus on emerging artists since 2003.

Van Nostrand received a Bachelor of Arts in Art History from George Washington University and a Master of Arts in Art History from Richmond University in London. She is the author of numerous essays and articles about the arts including the highly popular *Artists' Guide to Seattle*, an instructor for the Artist Trust EDGE Program and serves as the Vice-Chair of the Seattle Alliance of Art Table, the national organization for women leaders in the arts, in Port Townsend. Her lecture, "The Creative Voice," will take place on **Saturday, October 3**, at 1:00 p.m.

The 11th Annual Artist Studio Tour is scheduled for **Saturday and Sunday, October 10 and 11**, from 10:00 a.m. to 4:00 p.m. The popular tour will include 47 studios. Those visiting the studios will see work in progress in various media. An Art Studio Preview Show will be opened during Gallery Walk at the Northwind Arts Center on **Saturday, October 3**, at 5:30 p.m. Representative works will be shown and brochures for the tour will be available for visitors to plan their studio visits.

Visit www.northwindarts.org for more detail on gallery shows, poetry readings and workshops or call 379-1086. Northwind Arts Center is in Port Townsend at 2409 Jefferson Street and is open Thursday–Monday, from noon to 5:00 p.m.

Community Memorial Service

Jefferson Home Health and Hospice (JHH) will hold its annual community memorial service on **Friday, October 30**, at 5:00 p.m. All community members throughout Jefferson County are invited to join in this free, non-denominational service to remember and honor loved ones. The service will be held at Quimper Unitarian Universalist Fellowship, 2333 San Juan Avenue in Port Townsend.

With an emphasis on community and the celebration of life, this event is held every fall before the holiday season, because the holidays are often a difficult time for those who have lost a loved one. During the holidays, memories of those special people who have died and who will be missed come to the surface. This is especially true during the first year after the death. At a time when everyone is supposed to be happy, the bereaved can feel sad, lonely and depressed.

"Birth, life and death are a circle," according to JHH social worker Karrie Cannon, who specializes in bereavement. The memories held inside the circle are worth celebrating. With this in mind, the service will offer a peaceful, supportive and celebratory environment where comfort is offered and healing can take place. The service will include music, candle lighting, a program of responsive readings, reflections and sharing. Members of the Hospice Spiritual Care Team will lead the service with musical interludes by harpist Paula Lalish, flutist Raven and cellist Diane Vaux. There will be time for refreshments and sharing immediately afterward.

During the ceremony, a memorial quilt, made by the Cabin Fever Quilters, will be displayed and family members will be encouraged to add a photo or memento to honor and remember their loved one. The quilt is used as a symbol of hospice and represents the long-held American traditions of home, family, community and caring, all of which are the hallmarks of hospice care.

Anyone wishing further information is encouraged to call the JHH office at 385-0610, extension 4645.

Wild Mushroom Show

The Olympic Peninsula Mycological Society's annual Wild Mushroom Show will be held on **Sunday, October 18**, from noon to 4:00 p.m. at the Jefferson County Fairgrounds Art Building in Port Townsend. This popular event is open to the public.

The show will feature three tables of wild mushrooms divided into edibles, cautions and poisonous samples with names of local species. Mushroom experts will be available to identify the mushrooms brought in by visitors. There will also be a mushroom preservation table, mushroom art and dye table, propagation station and an art and garment table. All are invited for an enjoyable, interesting and educational afternoon.

Nature Walks in the Quimper Wildlife Corridor

Jefferson Land Trust (JLT) docents will lead a nature walk in the Quimper Wildlife Corridor on **Saturday, October 3**, from 10:00 to 11:30 a.m. The walk will trace the human and natural history of the Chinese Gardens at the edge of Fort Worden State Park.

The Quimper Wildlife Corridor links six major wildlife habitat areas, including four critical and high-priority wetlands. It also contains areas of significant habitat value within the connections between the major habitat areas. Admiralty Audubon Society estimates that more than 200 bird species currently make use of the corridor, as well as a wide variety of small and large mammals (including occasional anecdotal sightings of cougar, elk and bear). In addition, the corridor is already home to a significant number of informal trails on public rights-of-way.

JLT and its partners have been actively working for the permanent conservation of the Quimper Wildlife Corridor since 1996. Volunteers trained in the Trust's docent program lead regularly-scheduled nature walks on the first Saturday of every month, rain or shine. Each walk has a different theme ranging from seeing nature with an artist's eye to exploring the berries and edible plants. Since the walks vary, it is necessary to call the office or check the website to learn where the group will be gathering.

For more information call 379-9501 or visit the JLT website at www.saveland.org or.

United Methodist Women Raise Money for Mission Projects

The Community United Methodist Church Women will hold a bake and "Found Treasures" sale on **Saturday November 7**, 10:00 a.m.–2:00 p.m. Along with sale items and baked goods, bowls of delicious homemade soup and slices of a variety of pies will be available for purchase. Soup, roll, pie and coffee at \$5 or just soup and a roll at \$3) will be served from 11:00 a.m. until the pots are empty. Baked goods for sale will include muffins, breads, cookies, jams and more. Go early for best selection. All proceeds go towards church mission projects.

The United Methodist Church is located on Chimacum Road between Port Hadlock and Chimacum, about a half mile west of the QFC intersection. The church phone number is 385-1579.

Annual RainFest Auction and Birthday Party

Join Jefferson Land Trust (JLT) in celebrating 20 years of successful conservation at its 20th Birthday Party and RainFest Auction, on **Friday, November 13**. Doors open at 5:00 p.m. at the Jefferson County Fairgrounds. JLT has earned the reputation of hosting our County's most fun auction, and this year they'll do it all again as they celebrate their 20th birthday.

Tickets are available now by pre-registration for \$40 and include a delectable, catered light supper, drinks and a vaudeville style evening of fun! You may fill your own Cabaret table with six of your friends and family.

Donations of interesting or unique items are being accepted until **Friday, October 9**. Download a donation form at the website listed below.

JLT was founded in 1989 as a non-profit land conservation organization. It has over 1,100 stakeholders, 130 volunteers, 10 board members and seven staff. It has protected and/or stewarded 7,800 acres of salmon streams, family farms, wildlife corridors, tidelands and forest in Jefferson County.

To really get in on the RainFest auction, volunteer to help out with preparations on the night of the event. To captain a table or purchase tickets, e-mail www.saveland.org or call 379-9501.

Painting Workshops with Don Tiller

Don Tiller will conduct a two-day workshop on **Friday and Saturday, October 16 and 17**, from 10:00 a.m. to 4:00 p.m. at Northwind Arts Center in Port Townsend. The fee for the two-day workshop is \$140 and class size is limited to 12 students.

The workshop will feature contemporary landscape painting with fluid acrylics. Tiller will show the students his approach on layering and glazing techniques with an emphasis on compositions using bold colors and simplified shapes. The workshop is open to all levels and will focus on composing and painting in the allotted time. Another two-day workshop is scheduled on **Friday and Saturday, November 13 and 14**.

For more information, a registration form and material/supply list, go to www.dontiller.com or call 379-5450.

Huntingford Humanities Lecture at County Library

The *Los Angeles Times* calls Nancy Pearl, "...one lusty librarian." Pearl, who is author of *Book Lust*, will present the 2009 Jefferson County Library Huntingford Humanities lecture entitled, "The Pleasures and Perils of a Life of Reading," on **Wednesday, October 28**, 6:30 p.m. at the library. This is the eighth annual lecture.

Pearl will share the origins of her love of reading and libraries. She will discuss how the *Book Lust* books came to be written and what she has discovered some of the perils of a life of reading can be. Of course along the way she will suggest some good books to read. Readers can't get enough of her recommendations. Since the release of the best-selling *Book Lust* in 2003, she has become a tastemaker that people turn to when deciding what to read next.

Having worked as a librarian and bookseller in Detroit, Tulsa, and Seattle, Pearl's knowledge of and love for books is unmatched. In 1998 she developed the program, "If All of Seattle Read the Same Book," which has since spread across the country. She appears monthly on a Seattle-area television program, *Book Lust with Nancy Pearl*, and is also a regular commentator about books on National Public Radio (NPR).

The Huntingford Humanities Lecture was established in 2001 in memory of Sara L. (Sally) Huntingford, a long-time supporter of the Jefferson County Library. It was due in part to her efforts that the Library District was formed in 1978. As a teacher and mother she understood the importance of opening the door of learning to people who live in isolated, rural areas.

Copies of Pearl's books will be available for purchase following this event. Seating is available on a first-come, first-served basis. For more information call Jefferson County Library at 385-6544, or visit the website at www.jclibrary.info.

Cancer Seminar Offered

Harrison Medical Center's Oncology Services is offering an educational class designed to enhance communication with children in talking about cancer. The class will offer suggestions on how to draw out a child's feelings and concerns and support the child to decrease stress and anxiety related to the cancer. This class is for anyone caring for a child who has a loved one with cancer.

The class, "Helping Children Cope When a Loved One Has Cancer," will be offered on **Tuesday, October 13**, 6:00 to 7:30 p.m., at Christ Memorial Church, 18901 Eighth Avenue, NE in Poulsbo. The speaker will be Fran Lewis, PhD, RN, FAAN, Professor of Family and Child Nursing, University of Washington. Lewis is a distinguished researcher, social scientist, oncology clinical nurse specialist, author of professional cancer literature and is known internationally for her work in health behavior theory. She's an expert in communicating with children about cancer.

This class is presented by Harrison's Cancer Program and Kitsap Cancer Services and is part of its ongoing educational series designed for cancer patients, caregivers and survivors. Light refreshments will be provided. To attend call 360-744-4557 or e-mail cancersupport@harrison-medical.org.

Ludlow Artists' League Show at Gateway Visitor Center

The fall colors will be reflected in a new Art Exhibit at the Gateway Visitor Center at Highways 104 and 19. The Center is featuring an eclectic offering of watercolors, acrylics, pastels and photographic art by its Port Ludlow neighbors. Ten artists from the Port Ludlow Artists' League will display watercolor, acrylic, pastel and photography artwork, including Barbara Adams, Fran Bodman, Gary Griswold, Kimberly Guarisco, Betty Harmon, Ed Jaramillo, Judith Johnson, Lenetta Johnson, Marti Mathis and Joanie Reynolds.

The showing is worth seeing and will open on **Thursday, October 1** and run through **Sunday, November 15**. If you are looking at a rainy afternoon, the art will brighten your outlook along with maps and information available at the Center.

For family and friends visiting the area for the Olympic Peninsula fall colors, the Center is the spot for the information to get them around. Activities from hiking to sea kayak tours will showcase the Peninsula experience. The Center has a full array of maps, information and ideas on activities. For those whose passion is bicycling, there are new *Eastern Jefferson County Bicycle* maps on hand. Fall season hours are from 10:00 a.m. to 4:00 daily.

Gateway Visitor Center is supported by Jefferson County and managed by the Jefferson County Historical Society (JCHS). If you would like to volunteer as an ambassador for the County at the Center or at JCHS, call 437-0120 or e-mail gatewayvcr@olympus.net.

Sale of Costumes and Other Fun Stuff

Need a Halloween costume? Key City Public Theatre is selling various costumes, props, furniture and other fun stuff with proceeds to support their annual fund. The sale includes beautiful items and furniture from the Reid Austin Estate.



The sale will be held on **Saturday, October 3**, from 9:00 a.m. until 2:00 p.m., in Uptown Port Townsend at 1128 Lawrence Street. The website is www.keycitypublictheatre.org.

Free Directory Service Calls

1800FREE411

Cell phone companies charge between \$1.00 and \$1.75 or more for 4-1-1 information calls. Most of us

do not carry the telephone directory in our car so we end up paying the fee. There is another way.

Dial 1-800-free-411 is a service offered to Internet and cell phone users in which the usual directory assistance fee is defrayed by advertisers instead of callers.

Simply dial 1-800-free-411 or 1-800-373-3411 without incurring a charge whenever you need to use the 4-1-1 information option. This information may be programmed into your cell phone.

According to the Urban Legend website, the service works like this: When you ask for the number of, say, a particular local restaurant, you first hear a brief, roughly 10- to 30-second advertisement for a competing restaurant. At the end of the message, you are offered the option of connecting to either business. Though some callers may find the process confusing at first, it's safe to assume that many 4-1-1 users will happily sit through the commercials instead of paying the fees—known to run as much as \$3 per call or more—charged by their own service providers.

One reader suggests you go to the website www.free411.com, and sign up for free and then you will get a live person to help you when you call.

Population Growth in Jefferson County

Jefferson County's population is growing. It rose from 28,800 in 2008 to 29,000 in 2009. The County has gained 2,701 residents since 2000, a growth of 10.3 percent. It ranked 16th among Washington's 39 counties in growth rate. The fastest growing county was Franklin with a growth rate of 47.3 percent since 2000.

Intercensal estimates of population aged 65 years and over in Jefferson County rose in 2008 to 7,076, which represents 24.57 percent of the County's population—slightly greater than Clallam County with an estimated over 65 population of 23.92 percent.

The fastest growing city on the North Olympic Peninsula is Sequim in Clallam County with a population of 5,715. Port Townsend's population, on the other hand, declined by 30 residents to 8,895 in April of this year according to the Washington State Office of Financial Management. The official state population for 2009 is 6,688,200.



ART GALLERY

in Port Ludlow

Next to American Marine Bank

Layaway Available
Thurs/Fri: 11 to 4
Sat: 10 to 2
First Fridays: 5 to 6



PORT LUDLOW PLUMBING

SINCE 1961

RESIDENTIAL • COMMERCIAL

New Construction • Repairs • Alterations
REMODELING SPECIALISTS • QUALITY WORKMANSHIP
Water Heaters in Stock

Brian Peterson • State Contr# PORTLP2330AP

360 437-2770

115 Bayshore Dr. • Port Ludlow, WA

No bars, no springs, no kidding...



**PORT
MADISON
HOME**

**Home Furnishings
Interior Design**

An Authorized **AMERICAN LEATHER**® Retailer
2400 Winslow Way East, Bainbridge Island
206-842-3410 www.portmadisonhome.com

URGENT CARE
Minor Emergency & Walk-in Clinic

TWO CONVENIENT LOCATIONS - CLOSE TO HOME

Madrona Hill, Port Ludlow 9481 Oak Bay Road
360-437-9990

Madrona Hill, Port Townsend 2500 W. Sims Way
360-344-3663

Treating Illnesses, Injuries
 L&I, Medicare




X-Ray & Lab
 Immunizations
 Major Insurance

No Appointments, Walk-in Medical Care

Discover the Difference



As a resident of **Seaport Landing**, we provide you with as much freedom and independence as you wish. We offer customized care, depending on your needs and desires. Enjoy an independent lifestyle.

360-379-9376
 1201 HANCOCK ST.
 PORT TOWNSEND, WA 98368



SEAPORT LANDING

www.mtwestret.com

**HELP BEAUTIFY
PORT LUDLOW**

Start with **your** home. Colors galore! Choose easy-care laminates or solid hardwoods. Beautiful carpets including luxury wools at great prices! Or how about timeless granite, marble or tile? Choose what's best for your home. **Why not today?**

**McCrorie
CARPET ONE**



Creating Beautiful Homes Since 1958
 11662 Rhody Drive • Port Hadlock
379-9500



Snug Harbor Café
Great Grub and Grog

New Deal Meals!

Lite Breakfast Special \$5 • Mon.-Fri. 'til 11 a.m.
1/2 Sandwich & Cup Soup \$5 • Mon.-Fri. 11 a.m.-3 p.m.
Dinner Special • 10 or 12 Bucks
Available 4 p.m. until closing

To-Go Orders 437-8072
 9526 Oak Bay Road, Port Ludlow
 Visit us in Discovery Bay at 281732 Highway 101, 360-379-9131

N.W. Olympic Glass
Service you Expect, Quality you Deserve

Free Estimates / Free Mobile Service

- **Windshield Replacement & Repair**
- **Vinyl Windows / Insulated Units / Flat Glass**
- **Mirrors and Glass Table Tops • Marine**

360-379-2779
Toll free 1-800-313-1734

Locally owned
 Over 25 years' experience • Quality Installations, Insurance approved.
 License and Bonded contr#NWOLYOG94600



Contact Sandy White at
swhite@olypen.com
379-5248
 or **301-5151**

**LULU's
B & B For Dogs**

Exclusive resort for small dogs

Good food, fun walks and great company in warm loving home.
 No kennels or cages! Only 2-3 guests at a time.
 Licensed, insured and bonded.
 Reasonable rates, tours and references upon request.
 Visit our website at www.lulusfordogs.com

ACTIVE LIFE
 PHYSICAL THERAPY



Michael Haberpoiner, MPT

Our Services Include:
 Balance Training, Spinal Rehabilitation, Orthopedics
Medicare Accepted

New Address!
 9483 Oak Bay Road, Port Ludlow, WA 98365
360-437-2444 • michael@activelifetherapy.com



Liberty Shores Harbor House
Assisted Living Facility Memory Care Community

*Exceptional Care
in an Exceptional Place*

19360 Viking Ave. N.W., Poulsbo, WA 98370
360.779.5533

Jefferson Healthcare

Professional medicine. Personal treatment.

A comprehensive array of health services.

- ♦ Hospital Acute Care and Surgical Services
- ♦ Diagnostic Imaging and Lab
- ♦ Emergency Medicine
- ♦ Physical Therapy
- ♦ Urgent Care
- ♦ Home Health and Hospice
- ♦ Primary Care Clinics
- ♦ Wellness Programs

(360) 385-2200

www.jeffersonhealthcare.org

Cucina Pizza

Pizza~Burgers~Pasta~Subs~Salads

Now Serving Beer on Tap

Bring this coupon when you visit us~
Buy one medium pizza & get a 2nd one at 1/2 price!
(excludes our specialty pizzas)

We're located next to the Chevron in Port Ludlow.

WE DELIVER! 437-8200

Kathy Larkin & Associates PS

Kathy Larkin

Broker, CRS, GRI

Specializing in Port Ludlow since 1993

Phone: **360 437-2825**

Toll Free: **800-286-3591**

Email: klarkin@olypen.com

www.portludlowrealestate.com



Glessing & Associates

Certified Public Accountant

Kathleen A. Glessing

- Tax Preparation for Individuals, Partnerships, Corporations, Estates and Trusts
- Financial and Tax Planning
- Accounting and Auditing, Preparation of Financial Statements
- Computerized Bookkeeping and Payroll, Business Start-up
- Senior Financial Services

Telephone 360-437-9443 / Fax 360-437-9446

56 Village Way, Port Ludlow, WA 98365

Secret Gardens Nursery & Landscaping

Lots of plants, pottery,
furniture, and garden art

Bulk potting soil, compost
and garden soil

7 different colors and styles
of bulk bark



13570 Airport Cut Off Rd. • Port Townsend, WA 98368
360-379-3900

GRACE CHRISTIAN CENTER

Solid, Spirit-Filled Bible Teaching

Loving Jesus and Loving Each Other

**Inviting you to worship with us
Sunday mornings at 10:00 a.m.**

Port Ludlow Conference Center
200 Olympic Place, Port Ludlow

Pastor Kevin Hunter, Th.D.
(360) 821-9680

Pastor Sherri Barden, Ph.D.
(360) 821-9684

www.gracechristiancenter.us



Richard C. Tizzano ~ Attorney at Law



RICHARD C. TIZZANO
ATTORNEY AT LAW

ESTATE PLANNING

ELDER LAW • MEDICAID • GUARDIANSHIPS

- Revocable Living Trusts
- Simple & Complex Wills
- Probate
- Durable Powers of Attorney
- Community Property Agreements
- Healthcare Directives
- Will Contests

360-697-7132

Poulsbo

www.legalpeaceofmind.com

CLASSIFIEDS

Acceptance of ads is dependent on space availability. The cost is 25 cents per word (\$5 minimum charge), with a maximum of thirty words per ad. One ad allowed per business. Deadline for classified ads is the 10th of the month. Call Barrie Gustin at 437-8025 or e-mail sgustins@aol.com.

Alterations Done Reasonably. My home in Hadlock. Many references. Also, pillows, cushions and special projects. Attention to detail. Janice, 385-3929.

General Yard/Home Care Based in Port Ludlow. Pruning, weeding, planting, pressure washing, hauling. Versatile and dependable. Call Mike at SoundScape, 774-1421.

Moving, Pickup, Delivery. All types of hauls. Transfer and storage. Fast friendly service. Call Ron 360-732-0003.

Daniel Cooper Construction. Serving Port Ludlow and surrounding communities. From home maintenance to remodeling your home or business. Call our office at 360-316-9173 or leave a message at 437-0317.

Marine Dive Service. Boat maintenance; bottom cleaning, zinc replacement, inspection, and repair. Prompt response. Reasonable rates. Call 301-6083 or 379-5281.

RV Storage. South Bay, 1 mile west of Hood Canal Bridge on Hwy. 104. No electrical hookups. Call Shirley, 437-9298 (evenings best time to call).

Cedar Green Fix-It: Home Maintenance and Repair. Retired carpenter with 35 years of experience will help you protect your most valuable asset: your home. Call Jeff Johnson at 379-4800.

The Big Pig Thrift Store in Port Hadlock is accepting donations of reusable items/clothing. We also pick up. We carry items for everyone. Visit us: 811 Nesses Corner Rd. 379-4179.

Mole Control, Highly Skilled Pruning and Hedge Trimming. Ornamental trees, shrubs, fruit trees. Tree removal. Your arborist Richard at 1-888-854-4640.

Ludlow Custom Contractors specializes in custom home painting, decks, and finish carpentry. Contractor's License #MOSHECJ994MC. Christopher Mosher, 301-9629. "Custom Designing Your Dreams."

Foot Care. Dr. Jessica Lund, Podiatric Physician and Surgeon. Bunions, hammertoes, toenails, diabetic shoes, orthotics, heel pain. Located at 204 Gaines Street in Port Townsend. Call 385-6486 for appointments.

Foodies and Expats—Marina Market, Poulsbo. Infamous "Licorice Shrine" 300+ kinds black licorice. 225+ imported chocolates. Cheeses, specialty fish items, Marzipan, banana leaves. Imports from Scandinavia, Holland, Indonesia, Germany (Knorr), UK. We ship! www.marinamarket.com. 888-728-0837.

Taxes and Accounting. We specialize in tax preparation and needs of small business. We offer QuickBooks consulting, and make house calls. Call 437-1392. Great service/fair prices. Duane E. Anderson, CPA.

Brett's Stump Grinding. Beautify your lawn by getting rid of that ugly tree stump! Professional, reliable, affordable. Licensed, bonded, insured. Call Brett Aniballi, 360-774-1226.

Local Aggregates and Landscape Materials delivered and installed, using a smaller dump truck with fold-down sides. Call 437-8036. Reg. # KWIKKKO978MN.

Custom Countertops by Studio Surfaces. Serving the Olympic Peninsula. Offering 3CM Granite, Cambria/Zodiaq Quartz and Corian. Free in-home consultation and estimate. State-of-the-art fabrication and installation. Representing Fine Line Pacific. 360-301-9107.

Home Instead Senior Care—An Ideal Job for Seniors. Make a difference, providing in-home non-medical companionship and home care to seniors. Part-time, day/night/weekend shifts. 800-454-5040, 360-681-2511, 437-9884.

Physical Therapy in Port Ludlow. Active Life Physical Therapy, LLC. Our services include balance training, spinal rehabilitation, orthopedics, vertigo treatment, and total joint replacement therapy. Medicare accepted. 437-2444. michael@activelifetherapy.com.

Dog Townsend. Community-style boarding and daycare for your socialized dog. Dogs are carefully supervised while playing together in a healthy, safe and loving environment. Please call for interview. 360-379-3388.

Rick's Garden Service. Need help with planting, pruning, maintenance or problems in your garden? 25 years' professional horticulturist. Local resident/references. Rick Shelton, 360-302-1112 or 437-0860.

Port Ludlow Carpet Cleaning. Quality at a reasonable rate. Professional equipment. Call Jerry, 360-301-3864 or 360-796-4137. Pleasing you pleases me!

Gabriel Marine LLC. Complete vessel service, repair, caretaking. Gas/Diesel/Electric. All systems and materials, including welding/machining. Since 1978. Bonded/insured. Call Burton Gabriel, 360-301-2136, member ABYC.

Move it or lose it! Call STUFFAWAY to help you move in/out, organize, rearrange, downsize, dump, donate to charities or deliver furniture/appliances to your home. Call 24/7, local cell 360-302-1227 or visit www.stuffaway.com.

Fix It. Furniture Repaired. Re-gluing, rebuilding, refinishing, lamps and antiques included. Local references. Pick up and delivery. Call Don, 437-9398.

Housecleaning Service. Not enough time? Extra project around the house? Weekly, biweekly, monthly services. Openings for new clients. References available. Call Debra 379-0580.

Olympic Gutter Cleaning & Moss Treatment. Improving the appearance and life of your home. Call to set up an appointment at 360-301-9980. Licensed and Insured.

Severn's Services. Pressure washing, hedge trimming, deck staining, power blowing, gutters, interior and exterior painting. Big or small, give Jerry a call! Licensed/references. 360-301-3864 or 360-796-4137.

Computer Help In Your Home. New system set-up, hardware/software installation, application help, problem solving. Call Judy at 437-2156. jmmccay@cablespeed.com.

Marvin Painting. Meticulous finishing of your home both inside and out. Expert custom interiors. We take pride in our work! Call us to receive our brochure and references. 344-4235.

For Rent. Fully furnished Port Ludlow high-bank waterfront custom home. Magnificent water and mountain views. Three bedrooms, 2-1/2 baths, solarium. Sleeps 6-8. www.PortLudlowVacation-Rentals.com or joanmbergren@comcast.net. Jay 206-499-1504.

Income Tax preparation for individuals, partnerships & corporations. Prompt and accurate service. Free E-file. Your place or mine. Call 437-0630. Shirley Davis Accounting & Tax Service.

Housecleaning by Responsible Couple. One-time cleaning, move-out, home sale preparations, house checking, condos, thorough spring-cleaning for home/garage. Olympic Music Festival employee since 1998. 437-9511.

Spacious 3-bedroom 3-bath vacation home in Port Ludlow. Views of Olympics, Mt. Baker, Hood Canal. Wireless Internet, personal chef. Available weekly/monthly. Call Larry, 437-1055 or visit www.olympicridgehouse.com.

Admiralty Property Management. Let us serve your needs as owner or renter with care, communication and integrity. Call Kevin Hunter at 437-0888.

Elena's Alterations and Tailoring. Over 15 years' professional seamstress experience. Can sew anything from fine silk to denim and leather. For high quality alterations call 437-9564 or 360-643-3661.

Heating and Cooling. Your local expert, 23 years' experience. Maintenance, repair, installation. References gladly. For prompt professional service call Bob @ Coast Mechanical LLC 437-7558.

Facials, Peels and Waxing by Connie. Also featuring the Bio Micro current machine. Strengthens and tones facial muscles. Dramatic results. 437-8226.

Avon. Cosmetics, skin care, gifts, fragrance, hair care. Inette Wallace, Independent Sales Representative, 437-2071.
Inette_Wallace@earthlink.net.

"Yardening with Excellence." Hauling, trimming, beauty bark, power washing, fertilizing, yard maintenance. Local resident, George of the Jungle, 437-7688.

Excellent, Conscientious Carpet and Upholstery Cleaning by Phil with his rotary-extractor system. Local individual at reasonable prices, 379-5130 or message 437-0994.

Abiding HomeCare. Some agencies just want warm bodies, we want warm hearts. Provide in-home non-medical companionship and home care to seniors. Part-time, day/night/weekends/live-in. 877-266-2856. www.abidinghomecare.com.

Big Valley Pet Resort is a great place for your socialized pet to play while you are away. Check out bigvalleyanimalcarecenter.com or call 360-697-1451 or more information.

Drywall, New Construction. Remodels, small repairs, texture removal. 38 years' experience. Local references. 437-1435.

Avis Mortgage, Port Ludlow's Reverse Mortgage Specialists. Call for information: Teresa Forrest, Broker, 437-1192. Nancy Karam, Loan Officer, 301-5808. 29 years' combined experience. Licenses: #510MB47252, #510LO47253, #510LO47689.
AvisMortgage@gmail.com.

Quality Painting with Affordable Pricing. Exterior. Interior. Pressure washing. Lots of local Port Ludlow references. Bonded and insured. License CBSPAP*917CD. Call Tony Forrest, owner CBS Painting, for a free estimate: 1-360-633-5702.

Photo Repair and Document Restoration by Digital Process. Repair and enhance old and/or damaged photographs or documents. 437-0680. Bob Graham. bgconsulting@waypt.com.

APP Propane is now serving your Port Ludlow neighborhoods with: lower cost propane, home and business deliveries, great service and a Guaranteed Price Plan offer. Call us toll free 800-929-5243.

Treat Yourself to a Facial! This is the place for all of your skincare needs. Therapeutic Facials. Sally Hirschmann, Ludlow Bay Massage and Wellness Spa, 91 Village Way. 437-3798.

Computer-Fix. Your complete computer services company, available 24/7. Repair, data recovery, virus removal, affordable prices. PC and laptop. Broadstripe authorized affiliate. Kala Point Professional Bldg., 260 Kala Point Drive, Ste. 202. 385-6166. www.computerfix.com.

Dust Because Cleaning and More... back in full force, accepting new clients. One time, seasonal, weekly, construction, remodel cleanup and everything in between! Excellent references. Call Jennifer O'Connell, 360-643-1126.

Valley Barber has Moved to 95A Oak Bay Road, Hadlock (Kivley Center, next to Good Sports). Open Monday-Friday, 9-5. Appointments or walk-ins welcome. 379-0664. Hope to see you soon!

Nightly or Weekly Rental. Admiralty II, Waterfront. Condo and 10 guest rooms. Perfect for guests/small groups. Smoke-free, pet-free, free Internet. View rooms, best views of shipping lanes. Info: Kent 206-795-0400.

Are You Happy with Your Tile and Grout? We offer minor repairs, cleaning, restoration, clear seal, color seal, re-grouts, re-caulks, tile and stone installation. Gurney's Tileworks, 360-271-2780. Contractor's License GURNET*933PA.

Beaver Valley Storage. 100-800 square feet. Twenty-four hour security on duty. One month free with minimum six-month lease. 732-0400.

John Reed Construction. 30 years' experience remodeling and custom construction. Small jobs OK. I also consult on renovations or remodels. Avoid innocent but expensive mistakes. Great references. Licensed/bonded, 385-5723.

Gutter Cleaning, Leak Repair, Window Cleaning. Quick callback, free estimates, and reliable service. Jeremy at All Clear Detail, 360-301-6083 or 379-5281. Licensed, insured, strong local references.

Companion Care. Companion/Caregiving in your home, light house-keeping, meal prep, shopping, laundry, errands, Port Ludlow area. Please call 425-270-5987. Non-medical, excellent references (upon request).

Piano Lessons for All Ages. Kathie Sharp, an experienced teacher and performer, provides the tools to learn and develop musical skills to last a lifetime. 437-7928 or e-mail: klrsharp@yahoo.com.

Sun Problems? 3M Window/Skylight Film benefits: furniture fade protection, glare, privacy, insulates, security, lets sunshine in. Clear to opaque. Also decorative glass. Lifetime Warranty. Window Scapes Inc. 385-3810.

Affordable Web Design. Help people find your business on the Internet. Call Media-Spree today at 360-643-0506 for a free consultation.

Clock Repair. Mantel, wall, cuckoo or Grandfather's clocks repaired quickly at reasonable prices. Pick-up and delivery or house call. Call Marti McMahon at 360-437-5060.

Specializing in Decks (New and Rebuild), fences, sheds, tile, pressure-washing driveways (no roofs), light hauling and dump runs. Reasonable rates/senior discounts. Please call Al Anderson, 437-9220.

Haircuts at Sonja's Bayside Barber. Open Monday-Friday from 9 a.m.-5 p.m. Men, women and children welcome. Appointments or walk-ins. Located in Port Ludlow Village. 360-301-0009.

Fall Cruising: Reserve your cruise now for a day or week. Explore where only private yachts can go. Discount for Port Ludlow residents on multiple-day voyages. Call Captain Otness 437-4000.
www.pcocharters.com.

Solstice Farm, part of the local agricultural landscape for over 100 years, is still a working farm and now also a Bed and Breakfast. Website: solsticefarmstay.com. 360-732-0174.

Sewing Classes. Learn to sew. Beginning or intermediate classes, three hours long. Use my machine or yours. I also sew custom curtains. Over 25 years' experience. Sandy 437-5192.

Got Junk? Got Garbage? Ledoux Brothers Hauling Service. U-Call-We-Haul. foreclosure clean-outs, appliances, yard waste, evictions, anything! 15 percent Senior Discount. Call for free estimate. 360-821-9034.

Pet Sitting and Dog Walking. Let your pets stay safe in the comfort of their own home when they can't go with you. I love animals. Jenny 437-0508.

Cash for Contracts. Secured by Real Estate. Full or partial—nationwide. Call us to discuss your options. Convert your future payments to cash now. Duane E. Anderson, President, 437-1392.

Professional Floor Cleaning Services available through Northwest Tile and Grout Cleaning. Grout coloring, sealing, carpet and mildew removal at an affordable price. Call Dan today, 360-271-9340.

All Phases of Wood Working from rough framing to detailed finish. Design and consultation! Cabinetmaker since 1972. For more information call Joe Borg 437-7909.

Trade—Condo in Inner Harbor Condo Association for house in the surrounding area. Call Greg or Jan at 437-7671.

Applewood Dog Ranch. Five beautiful fenced and gated acres. Outside to play all day and inside at night with our family. Will only have 4 dogs at a time. \$20/night. 732-4579.

Private Martial Arts Instruction in the Home. Dr. Husfelt, philosopher and author, Wellness Consultant U.S. Senate, 45 years' experience journeying through the Americas, British Isles, Europe, Asia and Polynesia. 437-8092.

Gurneyman! Handyman Services. Small job specialist. Diversified quality repair and maintenance. A "handy" man to have around. 360-710-1250, gurneyman@juno.com.

Another Shold Construction. "Built with Quality." General contractor. Remodel, decks, siding, fencing, etc. No job too small. Licensed, bonded and insured. Todd Shold, 360-620-5035.

"Keeping Track" Pet Sitting. Small and large pets. Daily drop-in visits. Overnights in your home. Dog walking. Call Elisabet, 437-5145

Advertising Disclaimer

The printing of an article, or of classified or display advertising, does not necessarily constitute endorsement by the *Voice*.

Printed on mixed sources recycled paper with 30% post consumer waste (cover), or 100% post consumer recycled (inside pages), FSC certified, using vegetable oil based inks by SOS Printing SCS-COC-001645.

Paper Content

The *Voice* gloss cover stock is balanced recycled FSC certified with 30 percent recycled content. It is elemental chlorine free. The inside stock is acid free and meets the sourcing requirements of the Sustainable Forest Initiative.

Financial Disclosure

The Port Ludlow Voice

The *Port Ludlow Voice* is a 501(c)(4) tax-exempt organization, whose entire staff is volunteer and unpaid. All writing and editing is done in the homes of staff members on their personal computers, while a volunteer staff member does all the formatting, which is provided to the printer on disc.

The *Voice* is delivered at no cost to readers to all U.S. Post Office carrier route customers in the Master Planned Resort (MPR). Members of the Ludlow Maintenance Commission (LMC) and South Bay Community Association (SBCA) who live outside the delivery routes, and Snowbirds may subscribe for \$6 a year. Subscriptions to all other interested parties are available at \$15 a year. Average monthly expenses for printing and postage are \$4,978 plus miscellaneous items of \$60, for a monthly average of \$5,038.

The sources of financial support for publishing the *Voice* each month are:

1. Port Ludlow Associates (PLA)	\$200
2. Port Ludlow Golf Course	\$200
3. Port Ludlow Marina	\$200
4. The Inn At Port Ludlow	\$200
5. Ludlow Maintenance Commission (LMC)	\$200
6. South Bay Community Association (SBCA)	\$200
7. Port Ludlow Village Council (PLVC)	\$200
8. Port Ludlow Chamber of Commerce	\$100
9. Subscriptions Average	\$60
10. Classified Advertising Average	\$480
11. Display Advertising Average	<u>\$2,765</u>
	\$4,805

©2009 *Port Ludlow Voice*. All rights reserved.
 Printed in the U.S.A.

No part of this publication may be reproduced in any form without express written permission of the *Port Ludlow Voice*.



Serving Jefferson County for Thirty one years!



Your EnviroStar PRINTER!



FSC
CERTIFIED SCS-COC-001645

Forest Stewardship Council certified, we use and recommend recycled paper!

What can we print for you?



385-4194 sos@olympus.net
www.sosprinting.biz 2319 Washington Street, Port Townsend

Advertiser Index

Name	Category	Page
Active Life Physical Therapy	Physical Therapy	46
Allstate Insurance	Insurance	27
American Marine Bank	Banking	18
Avis Mortgage	Mortgage Services	27
Bankers' Life	Insurance	29
Karen Best	Real Estate	32
Brady Chiropractic Services	Chiropractic	27
Coldwell Banker	Real Estate	34
Craftsman Painting	Home Maintenance & Repair	29
Cucina Pizza	Restaurant	47
Custom Designs	Home Maintenance & Repair	32
Dana Pointe Interiors	Interior Design/Home Décor	32
Discovery Physical Therapy	Physical Therapy	18
Double DD Electrical	Electrical Service	18
Edward Jones	Investment Securities	25
Fireside At The Inn	Restaurant	25
First Federal	Banking	29
First Presbyterian Church	Church	25
Glessing & Associates	Accountants/CPA	47
Grace Christian Center	Church	47
Hadlock Mattress & Furniture	Furniture	25
Handy Man With a Truck ...	Moving, Hauling & Repairs	25
Hear for Life	Hearing	27
Home Instead Senior Care	Home Healthcare	27
Jefferson Healthcare	Home Healthcare	47
Kitsap Bank	Banking	25
RH Koller Rug Cleaning	Carpets/Decorating/Floors	40
Kathy Larkin & Associates	Real Estate	47
Liberty Shores / Harbor House	Assisted Living/Memory Care	47
Bob & Clydene Lloyd	Real Estate	29
Lu Lu's B & B for Dogs	Pet Services	46
Ludlow Bay Realty	Real Estate	18
Madrona Hill Urgent Care	Urgent Care	46
McCrorie Carpets	Carpets/Decorating/Floors	46
NW Olympic Glass	Glass	46
Marjorie Pederson, Dr.	Chiropractic	10
Pizzo Computer Consulting	Computer Services	40
Port Ludlow Art Gallery	Art Gallery	45
Port Ludlow Community Church	Church	18
Port Ludlow Plumbing	Home Maintenance & Repair	45
Port Ludlow Voice	Community Magazine	32
Port Madison Home	Interior Design/Home Décor	46
Jim Posey Insurance	Insurance	18
Seaport Landing	Retirement Living	46
Secret Gardens Nursery	Gardening Plants & Supplies	47
Snug Harbor Café	Restaurant	46
SOS Printing	Printing	51
Sunshine Helping Hands	Home Maintenance & Repair	36
Richard Tizzano	Attorney	47
Weber's Window Cleaning	Window Cleaning	10
Windermere	Real Estate	36

**FOR INFORMATION ON DISPLAY ADVERTISING,
CONTACT KATHY SNIDER, 437-9165,
OR E-MAIL KATHYSNIDER@EARTHLINK.NET.
DEADLINE FOR COMPUTER-READY ARTWORK IS THE
1ST OF THE MONTH PRIOR TO PUBLICATION DATE.**

PORT LUDLOW VOICE

P.O. Box 65077 • Port Ludlow, WA 98365

www.plvc.org

Mailed at no charge to residents having mail
delivered by local postal carriers.

Homeowners receiving mail at out-of-area addresses
(including Snowbirds): \$6 per year.

All other subscribers: \$15 per year

Direct all subscription inquiries to:

Finance and Subscription Manager:

Sally Grything 437-2065 grything@olympus.net

Direct all advertising inquiries to the following:

Classified Advertising Manager:

Barrie Gustin 437-8025 sgustins@aol.com

Display Advertising Manager:

Kathy Snider 437-9165 kathysnider@earthlink.net

Editorial Staff

Editor: Beverly Browne 437-8099 brownnew@bus.orst.edu

Copy Editors:

Ken Cheney 437-0685 kcheney@cablespeed.com

Barbara Wagner-Jauregg 437-9726 bwagnerj@olympus.net

SBCA Editor:

Janet Force 437-0419 jandd@broadstripe.net

Bay Club Editors:

Eva VanBuren 437-7932 be4547@msn.com

Judy Thomas 437-7906 judythomas2@yahoo.com

Beach Club Editor: Barbara Berthiaume 437-0423

barbara.berthiaume@gmail.com

Arts and Entertainment Editor: Beverly Rothenborg

437-0505 bevrothenborg@broadstripe.net

Arts and Entertainment Assistant:

Linda Karp 437-0175 georgekarp@aol.com

Eating Around Editor:

Marti Duncan 437-8158 martiduncan@q.com

Regularly Scheduled Activities Editor:

Kathie Bomke 437-4086 kacebom@live.com

Contributing Editors:

Stephen Cunliffe sjaycee@mac.com

Susan Cunliffe, Osuzannah@gmail.com

Eline Lybarger 437-7701 lybarger@olypen.com

Jen Portz 360-531-0739 jenportz@yahoo.com

Diane Ruff 437-4160 dianekayr@aol.com

Kathy Traci 437-7874 tracipkt@aol.com

Barbara Wagner-Jauregg 437-9726 bwagnerj@olympus.net

Production Manager:

Mary Ronen 437-0268 maryr@olympus.net

Distribution Manager: Bob Azen

Photographers:

Marti Duncan 437-8158 martiduncan@q.com

Peggy Lee Flentie 437-2702 thepegster@cablespeed.com

Proofread by: Barbara Adams, Karen Davies and Lisa Olsen,

Port Ludlow Voice
P. O. Box 65077
Port Ludlow, WA
98365

ECRWSS
GOOD NEIGHBOR
PORT LUDLOW, WA
98365

Presorted
Standard
U.S. Postage
PAID
Permit NO. 14
Port Hadlock, WA



The mission of the Port Ludlow Voice is to inform its readers of events and activities within the Village, and in close proximity to the Village.

We will print news articles that directly affect our residents

Published monthly by an all-volunteer staff.

Your input is encouraged. Submit your special events and news items to the Beach or Bay Club editor prior to the 10th of the month preceding the date of the issue.

Trunk-A-Treat

Do you miss seeing little goblins, witches, pirates and princesses at your door on Halloween? The Community Enrichment Alliance (CEA) volunteers do, and think you might, too. Last year both children and adults had a wonderful time at "Trunk-A-Treat." You are invited to bring your vehicle and attend again this year.

This event is open to all of Port Ludlow and the surrounding area. Decorate the trunk of your car for Halloween and point it toward the center of the parking lot at the lower Village Center area between



4:30 and 6:00 p.m. on **Saturday, October 31**. Stand by your trunk ready to distribute store bought and individually wrapped treats. Costumes are optional but add to the fun as long as they are not too scary. Be sure to bring flashlights for safety.

The children may also trick or treat at local businesses. The event will be canceled if it rains.

**PORT
LUDLOW
VOICE**
11 YEARS
STRONG