



# PORT LUDLOW VOICE

*Serving the Village of Port Ludlow Since 1998*

## Emergency Services Aid Ludlow Residents

by Beverly Browne

### Contents:

Editor's Keyboard	2
Village Council	14
Village Activities	19
Beach Club	21
Bay Club	25
Arts and Entertainment	27
PLA	29
Mariners	30
Golf News	32

*"Call immediately... situations are harder to deal with when there is a time lag."*

*Editor's Note: In the past year, this writer had a first-hand experience with the skilled care provided by our local EMS crew. The paramedic accurately diagnosed the condition and ordered transport to Harborview Hospital in Seattle. She believes the residents of the Port Ludlow community are in good hands with the personnel of Fire District #3.*

Port Ludlow residents are familiar with the sound of sirens from emergency vehicles responding to calls from Village residents. Emergency services for the Port Ludlow district are located at Fire District No. 3, and have been available for 15–20 years. The current staff consists of Fire Chief Wayne Kier, 10 full-time staff members and 21 volunteers, most trained both as fire fighters and emergency medical technicians. A paramedic has additional training that allows him to administer invasive procedures and drugs.

In an interview Chief Kier reported that the station receives 30–40 emergency 911 calls in a month from residents of the 53 square mile fire district. The majority of calls are emergency calls involving the medical issues of older populations. Fifteen out of 20 calls may require transport to a hospital facility in Port Townsend, Bremerton, or Seattle. A private company provides helicopter transport services. The budget for all emergency services is about one million dollars per year, funded from property taxes.



*On a recent visit to Fire District #3 Firefighter/Paramedic Debbie Randall and Firefighter Wes Lueders show Contributing Writer Bev Browne a 12-Lead Heart Monitor and Aid Bag.*

*Photo by Ralph Thomas.*

The average team consists of three vehicles and staff: an ambulance with 2 or 3 people, an aid car, and a fire engine. The fire engine carries emergency equipment that cannot be carried by the other vehicles. Kier said he is frequently asked why so many people are sent to a call. He responds that the issue is one of time and that in an uncertain

situation, it is more efficient to have equipment and staff present than to call them in later.

Tight relationships exist between the local Fire Districts for aid. If equipment breaks down,

*(Continued on page 10)*

## From the Editor's Keyboard

by Barbara Wagner-Jauregg, Managing Editor

Fall is in the air, the nights are nippy and colorful leaves brighten the scene (and clog the storm drains). But fall also means a new "beginning." Newly elected officers of organizations launch their year with new ideas and programs. At the Port Ludlow Village Council (PLVC) Workshop in mid October, Directors brainstormed what they should focus on this coming year. It was clear that all of us should roll up our sleeves and get involved!

With a population expected to top out at about 5,000 in the latter years of the decade, it behooves the Port Ludlow Village Council (PLVC) to establish a Long-Range Planning Committee to consider the many issues that will face our community in the not-too-distant future. For instance, who should own the water and sewer system, what happens to dedicated green space and riparian lands presently owned by Port Ludlow Associates?

Whether it was Pope Resources, Olympic Property Group or Port Ludlow Associates, this community for many years has benefited from the presence of a developer. But once build-out is completed in the next five years or so, the future of Port Ludlow becomes our challenge and responsibility. Scott Wilson, publisher of the Port Townsend & Jefferson County Leader, suggests in an editorial on October 9 that "if any unincorporated village in Jefferson County has the ability to quickly formalize itself as a self-governing town, Port Ludlow is it." He cites the level of retired government talent but cautions that a very detailed discussion of the costs and benefits must come first.

The *Voice* urges the PLVC to establish this important new committee. But it also calls upon those citizens with skills and experience in long-range community planning to volunteer their services to this important new committee. Carol Saber, newly selected chairman of the Village Council Board, has announced the creation of a Town Meeting format for their monthly meetings held the first Thursday of every month (see related article on page 15). What is important to you? Where do you think we should be focusing our time and talent? Speaking up at a Town Meeting is an important first step in your getting involved.

*Barbara*

## You Can't Be From It If You Don't Get Into It

by Kate Madson

Does knowing a place help you to know yourself? Is simplicity the same thing as lack of complexity? How does desiring less compare with accumulating more? What's the difference between a group and a community? Will globalization bring increased prosperity? These and numerous other questions are considered in Northwest Earth Institute (NWEI) discussion circles.

NWEI discussion circles bring people together to examine their relationships with nature and learn how to adopt more earth-friendly lifestyles. Since NWEI began as a non-profit in 1993, over 35,000 people have participated in discussion groups in over 400 locations across the U.S. Five courses are offered: Voluntary Simplicity; Discovering a Sense of Place; Perspectives on the Global Economy; Deep Ecology; and Choices for Sustainable Living. A one-hour meeting will be held at 3:00 p.m. on **Thursday, November 21**, at the Bay Club to describe the courses and assist those interested in launching discussion groups after the holidays.

Each 90-minute meeting involves thought-provoking readings and a lively exchange of ideas on how our habits and attitudes affect the environment. From seven to ten people meet for seven to nine sessions, usually weekly. A NWEI volunteer attends the first and last meetings to help with logistics; otherwise the group runs itself. Suggested discussion questions are provided and facilitation rotates among the participants. The goals are to stimulate conversation and have everyone's opinion heard and respected. The only charge for participating is \$15 to cover the cost of the course book. If you are interested and can't attend the **Thursday, November 21**, meeting, call Kate Madson at 437-5156.

### Flu Shots Given at the Bay Club

**Friday, November 8**

9:00 a.m.–12:00 noon

Fee is \$20, unless covered by Medicare

## The Club at Ludlow Bay— On the Water

by Eline Lybarger

The Club has received a negative vote from the Port Ludlow Yacht Club (PLYC), so the *Voice* contacted individual boat owners to find out where they stand on the issue of joining The Club vs. what to do with their boat if they don't join. Five owners were interviewed, three of whom belong to the PLYC. Each person was emphatic about not joining The Club even if it meant being forced out of his or her space in the Marina.



The Ahos have a 40-foot powerboat they use for cruising. They plan to pay their moorage fees monthly until “they kick us out, kick out someone else (and they move out in protest), or they raise the rates.” If they are forced to leave they will anchor in

Inner Harbor where they can watch the boat from their home, and it's free. However, they don't believe they will be moving because they believe if no one joins, no one can bump you out of your slip.

Grant Smith has a 22-foot boat he uses for fishing. He, too, is not moving, but also does not support The Club in any way. He buys gas for his boat in Port Townsend (\$300 for a fill-up), refuses to eat in any of The Club restaurants (previously ate there about once a week), and won't allow his guests to play golf on the Golf Course. Grant's boat is trailerable, but since Port Ludlow doesn't have a public boat ramp, fishing would be too inconvenient. He says he probably will just sell the boat and give up fishing.

Arnie Koch, with a 25-foot boat, also is an avid fisherman, but if he is dispossessed from his moorage, he will simply “park it on my beach.” As he sees it, the only problem is that he will be limited to fishing when the tide is high since he needs a high tide to get his boat out of the inlet in front of his house.

Denny and Kate Madson use their 30-foot boat for cruising, but it also is a Coast Guard facility. This means, in an emergency, they are trained and can be called upon by the Coast Guard to assist. As a boater I find it comforting to have this kind of resource moored in Port Ludlow. Again, for the immediate future they plan to pay their moorage fees on a monthly basis. Even if they are offered a discount for paying a year in advance they will decline—the future is too uncertain. However, for the more distant

future they are looking into the permits, guidelines, and possible locations for putting down a mooring. Over simplified, this is a heavy weight on the bottom with a chain to a float that can be secured onto a boat.

Because of John's work, the O'Sheas had considered renting an apartment in Seattle—it wasn't a perfect solution—they couldn't take their dog, and it was expensive. Since The Club appeared, they've decided to moor their 45-foot powerboat at Carrillon Point on Lake Washington, and use it like an apartment. It is close to Bellevue, less expensive than an apartment, and they can take their dog. The down side is that it will be less convenient to participate in PLYC outings.

These are all creative, individual solutions to a common problem, and as individuals they stand together in their resolve not to join The Club.

## Golf Groups Plan for 2003

by Beverly Browne

Men's and women's nine and eighteen-hole golf associations plan for continued golfing in 2003 without membership in The Club. The PLMGA (Port Ludlow Men's Golf Association) propose disbanding the current men's club on December 31, 2002, postponing the election of officers until the spring meeting, and maintaining the current board until a new board can be elected. The women's eighteen-hole Golf Association (WGA) has posted nominations for the 2003 board. They will be presented at the October awards luncheon.

The men's nine-hole group proposes to elect officers for 2003, establish rotation of play with local public courses, set up a computer system for handicapping information, and continue their social functions. Suggested courses include McCormick Woods, Gold Mountain, Trophy Lakes, Chevy Chase, and Dungeness. Members should consider which days and times they want to play. The Lady Niners will continue with its current board and will finalize plans for play in 2003 in January or February.

All groups value the exercise, friendship, and socialization that golf provides and plan to continue, even if it is not at the Port Ludlow course.



## Terms of the Pope to PLA Sale

by Randall Shelley, PLVC Ad Hoc Committee Chair

The following is public information readers may find of interest:

Date of Sale:	August 8, 2001
Seller:	Pope Resources
Buyer:	Port Ludlow Associates LLC (PLA) (An entity formed by HCV Pacific Partners LLC)
Purchase Price:	\$16,600,000
Terms (approximate):	Cash – \$10,200,000 3 year note – \$5,900,000 Assumed liabilities – \$500,000
Items Purchased:	1,300 acres consisting of 300 slip Marina 37 room Heron Beach Inn 27 hole Golf Course Conference Center Commercial Center RV Park Restaurant/Lounge Water and Sewer Utilities 100 developed lots 450 raw land lots
3-Year Note Terms:	Interest – 10 percent Security – 100 developed lots 450 raw land lots

(This security is junior to an undisclosed senior construction loan.)

Balance Due as of June 30, 2002 – \$2,537,000

(Apparently partial payments are due as lots sell.)

Balance Due by August 8, 2004

Reason for Sale listed by Pope: "Poor historical financial performance"

Pope's Asset Impairment and Exit Costs as a result of continued negotiations surrounding the sale:

2000 – \$9,200,000  
March 2001 – \$1,300,000  
additional

## From the State of Washington

The *Voice* was provided with a copy of the letter sent by the State of Washington, Department of Financial Institutions, Securities Division, to Greg McCarry, CEO of Port Ludlow Associates (PLA). Since all members of our community may not have had an opportunity to read this letter, we are printing it in its entirety.

*REPRINT*

*September 19, 2002*

*Dear Mr. McCarry:*

*We understand that your company is currently offering memberships in The Club at Ludlow Bay ("The Club"). Based upon our review of the offering materials, it appears that the offering constitutes a security.*

*As defined in RCW 21.20.005(12), "security" includes an investment of money or other consideration in the risk capital of a venture with the expectation of some valuable benefit to the investor where the investor does not receive the right to exercise practical and actual control over the managerial decisions of the venture.*

*In this case, it appears that members are making an investment in the form of a membership deposit. In return, the members have the expectation of continued use of golf and marina facilities without the right to control the use of their invested funds and without the ability to exercise practical or actual control over the managerial decisions of The Club.*

*Should you wish to continue offering memberships, you must comply with the Securities Act of Washington, ch. 21.20 RCW. Willful violations of the Securities Act are a criminal offense. Please respond in writing by no later than October 10, 2002 to explain how your company will comply with securities registration and disclosure requirements. If you have any questions, please call me at (360) 902-8771.*

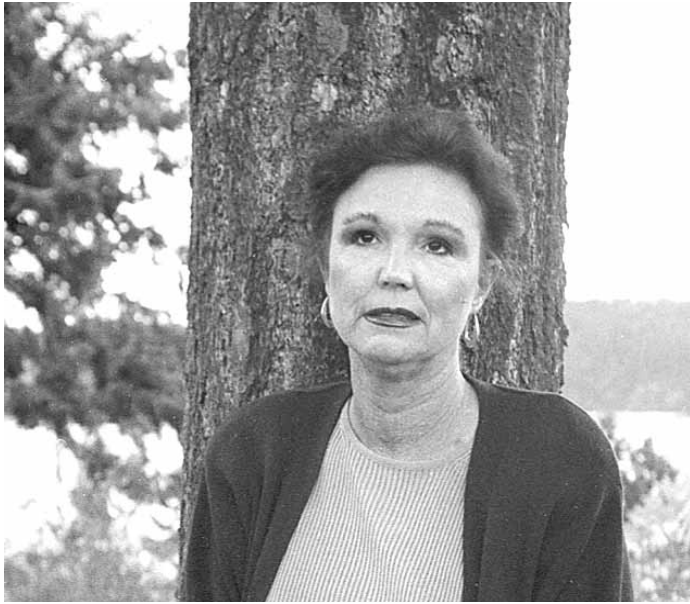
*Sincerely,*

*Janet So  
Financial Legal Examiner*

## A Tribute to Sally Smith

by Carol Saber

Sally Smith chose not to be present at the last meeting of her term of office (as chairman of the Port Ludlow Village Council). She suspected we would want to honor her and, typical Sally, she didn't want to face public applause. Yet, if anyone in this community deserves applause, it is Sally



*Sally Smith*

*Photo Courtesy of the Port Townsend & Jefferson County Leader*

Smith.

While the rest of the community may not be aware of all that she does and has done for Port Ludlow, those of us who have worked with her on a daily basis are in awe of her dedication to this community and her selfless giving of her time to make Port Ludlow and the Olympic Peninsula a wonderful place in which to live.

Before there was a Village Council, CLOA, formed in 1992, was the predecessor organization that tried to pull this community together. Sally was the president of CLOA for the last five of those years and worked tirelessly with the mediation team created to hammer out ordinances for the protection of the Port Ludlow community. When it became obvious that Port Ludlow needed a more formal, structured organization, she was instrumental in helping to create the elected Port Ludlow Village Council.

In 1999, when the Council was created, she was elected

to the Board and served that first year as Vice-Chairman. In 2000 she was re-elected to the Board and elected Chairman. She has served in that capacity for two years. As Chairman, she made the Village Council and the concerns of the Port Ludlow community her full time job. Although this is a volunteer position, she made herself available beyond what could reasonably be expected, at great personal sacrifice to her. No one who comes after her will be able or willing to do what she has done with such complete dedication. She is a "tour de force" beyond compare and Port Ludlow is lucky to have had her services.

I am happy to report that although Sally will no longer be a member of the Village Council Board, we will still have her counsel although in the background. She continues to serve on committees dealing with the Hood Canal Bridge, SR 104 and the Tacoma Narrows Bridge and wishes to remain Chair of the PLVC Transportation Issues Committee. She will continue to work with Don Cooper on the Port Ludlow Festival 2003 and has already begun that project. As to the future, Sally is embarking on a new career in real estate and I know that she with her dedica-

## Audiology Open House

Hear For Life Audiology invites you to a two-day open house event, **Tuesday and Wednesday, November 19 and 20**, at their offices in Port Ludlow, Kingston and Bainbridge. Call for a free, no-obligation consultation to learn more about TRIANO™ the latest digital hearing aid technology, brought to you by Siemens, the world leader in digital hearing aid technology.

TRIANO is so advanced it adds comfort and enjoyment to the most complex listening situations. The Special Comfort System™ analyzes environments and automatically enhances speech with highly intuitive directional performance.

A Siemens representative will answer questions about TRIANO or any other product from the Siemens line. Special pricing will be offered from Hear For Life's already affordable prices from Siemens. You will also have an opportunity to enter a free drawing to win an advanced digital hearing device equipped with directionality and background noise reduction—or an amplified telephone.

Call Marilyn Loy-Every, audiologist, today at 437-7767 to arrange your consultation appointment in Port Ludlow.



## Port Ludlow Artists League to Sponsor Art Walk

by Lynn Thomas

The Port Ludlow Artists League will be sponsoring an Art Walk in cooperation with the merchants of the Port Ludlow Town Center. The Art Walk will take place on **Friday, December 6**, from 1:00–5:00 p.m. Each merchant will sponsor at least one artist. The Art Walk will feature mixed media from paintings to sculpture.

In keeping with the Christmas spirit, the business sponsors are donating refreshments and treats. Music will be provided. This is a free community event and is open to all. As plans are finalized more details will be made public. The local sponsors are the American Marine Bank, Snug Harbor Café, Edward Jones Co., Windermere Port Ludlow, Dr. Thomas Hagen, Coldwell Banker Real Estate and the Port Ludlow Community Church. For further information, contact Lynn Thomas at 437-4069.

## November Hiking Treks



On **Friday, November 8**, Sandy O'Shea will lead the Hiking Club on a difficult 3-mile hike with a 1,325-foot elevation gain on the Mount Zion trail. A short but steady climb, this hike provides views of the Olympics. For more information, call Sandy at 437-1118. Meet at the Bridge Deck at 8:00 a.m.

Don Derrington will lead a moderate 7-mile hike on the Duckabush River trail with a 1,300-foot elevation gain through impressive second growth forest on **Friday, November 22**. Don can provide more information, so call him at 437-9590. Again, meet at the Bridge Deck at 8:00 a.m.

Any **Wednesday** you can hike the Timberton Loop Trail. Doris Monti at 437-0716 is the leader and asks that you meet at the trailhead on Timberton Road at 9:00 a.m.

Reminders to all hike participants: always remember to carry extra water and food, and wear appropriate clothing and shoes.

## Dance Practice

Need a chance to brush up before the winter dance season hits? We have scheduled three nights of practice time, **Thursdays, November 7, 21 and December 12**, from 5:00–6:30 p.m. Bring some music you like to dance to; we will be doing ballroom and country partners dancing, including waltz, fox trot, two-step, and cha-cha. So bring a partner and come join us in the Bay Club auditorium. There will be a charge of \$1 per person for non-SBCA members.

## DANCERS BY THE BAY

Autumn Dance

Dance And Dessert

Thursday, November 14

Bay Club

6:45 p.m. Open Table Seating

7:00-10:00 p.m. Music and Dancing

Band ~ "Casanova"

••• BYOB •••



Glasses, Ice, Nibbles, Dessert and Coffee Served

Tickets in advance \$11 per person

All Port Ludlow residents and guests welcome

## To Our Loyal Readers

by Barbara Wagner-Jauregg, Managing Editor

The *Port Ludlow Voice* is not associated with an electronic newsletter that has recently appeared in Port Ludlow. Called the *Port Ludlow Community Electronic Newsletter*, it was developed by Ralph Thomas, the founder and original publisher of the *Voice*. Thomas resigned from the *Voice* late last year citing the demands and stress related to the job.

Obviously an electronic newsletter has the advantage of rapidly getting news out to a portion of the community. However loyal readers of the *Voice* should be assured that "The mission of the *Port Ludlow Voice* is to inform its readers of events and activities in the Village, and within close proximity to the Village." For that reason, the *Voice* is sent free of charge to every postal customer within the Master Planned Resort (MPR). In addition, our staff will always try to present both sides of issues so that our readers can make intelligent judgments on their own.

## Pols Invade Ludlow!

by Phil Norwine

On September 24, the people behind those ubiquitous campaign signs came to the Bay Club. In a town where the “town square statues” are logging stumps, it is fitting that Port Ludlow (PL) became the political stump for 11 of the 13 candidates in the **Tuesday, November 5**, local elections.

Residents who expected the elephant to bellow and the donkey to bray were disappointed. Candidate differences focused on suitability (i.e. relevant experience) vs. political divergence. The forum ran through 3 and 1/2 hours of statements and a prepared Q/A session that sorely tried the truism that a speech should not last any longer than the seat can endure.

Three things deserve note. One: Interest—the Bay Club filled almost to capacity. Two: Quality—all seeking office were impressive candidates. Third: Organization—the evening was effectively moderated by Howard Slack who ran a smooth program, fair to all.

### Principal Issues

**Legislature:** Too Many Programs—Not Enough Money. Cuts will be required. The Demo incumbent—uses 90 percent of her time for budget; says there is no money for new needs. Eighty-three percent of the budget is spent to educate, incarcerate and medicate. There may be a \$1.6 billion shortfall.

### Hood Canal (HC) Bridge

Completion of HC Bridge on schedule got strong emphasis. All want swift repair on time and within budget. Should there be a ferry service? Several support fast ferry service from PL or Port Townsend (PT) to Seattle for the bridge-out and as a permanent addition. Would it be self-supporting? Should it be subsidized? Could Initiative 51 help? Will I-51 pass? Study this issue!

### Growth Management Act (GMA)

Jefferson County needs to support the State GMA that is expected to provide economic stability. One candidate stated that Jefferson County has wasted millions fighting GMA. City and County must share, not fight, for upper hand in managing the GMA. Jefferson County's economy is stable and diversified with 2,300 small businesses, but employment has seen 6.3 percent decline.

### Public Utilities District (PUD)

Forget water—the talk was about fiber optics (FO). Candidates favor, but how is not clear. The County has a FO network on electric poles. FO should start with County agencies; PUD should approach with caution. Self-supporting? Doubtful. Summary: we need to be visionary, keep talking about it.

### Referendum 51

One incumbent says this \$7.7 billion 10-year transportation package must be passed. Stimulation of the economy is needed for growth of one million people and 700,000 new cars in that period. Ferry funding and more infrastructure are needed; more job creation is essential. There was no agreement on whether new taxes are needed. Study this one before you vote!

Check out Ref. 53, Initiatives 776, and 790 at [www.secstate.wa.gov](http://www.secstate.wa.gov).

### The Candidates

#### Position 1, 24th District State Legislature

Jim Buck, Republican (Incumbent), vs. Bill Thomas, Democrat (Challenger)

(The 7-year Sequim mayor bids for an upgrade to State Rep—could be popular if he would bring his climate to Olympia.)

#### Position 2, 24th District State Legislature

Lynn Kessler, Democrat (Incumbent), unopposed

#### District 3, Jefferson County Board of Commissioners

Wendi Wrinkle, Democrat, vs. Pat Rodgers, Republican

She was not present but is a long time resident of Shine, and member of the Shine Action Committee with concerns about development, protecting our way of life, and water supply, 'specially regarding sea water intrusion. He is retired here and has skills in business and government. His top concern is about the severe economic problems, stating that 11 percent live at the poverty level. He believes the economy can and should expand in certain waterside communities.

#### Jefferson County Auditor

Donna Eldridge, Republican (Incumbent), vs. Kathy Nelson, Independent (Challenger)

The incumbent upholds voting at the polls, will not support any tax increases and says no to performance auditing. The independent seeks balloting by mail, which “would reduce election costs” with fewer mistakes, and favors performance auditing.

### **The Jefferson County Sheriff Shoot-Out**

Kristen Anderson, Republican, vs. Mike Brasfield, Democrat

The very qualified 6-year PT chief of police is pitted against a nationally known law enforcement officer sporting a six-page experience resume! Question: when a sheriff makes an arrest, does he/she inquire about political affiliation? In this race the County can't lose!

### **District 2, Jefferson County Public Utilities District**

Dana Roberts, Democrat (Challenger), vs. Dick Shipman, Republican (Incumbent)

Ken McMillan, Republican (20-year Incumbent), vs. David Sullivan, Democrat (Challenger)

You've Heard Them—Now Remember To Vote.

Sitting on the fence will cause some awful chafing after awhile.

## **Independents Welcome Fall With A Bountiful Potluck**

*by Peggy Schafran*

The Independents will welcome fall and Thanksgiving with a bountiful potluck on **Thursday, November 14**, at 5:00 p.m. Marilyn Norwood and Diana Anderson will co-host this event. Marilyn has graciously volunteered to open her new home to us at 820 Pioneer Drive. We will enjoy a Thanksgiving banquet of both turkey and ham. Attendees will supplement the menu. Diana Anderson will coordinate the food items. Please call her at 437-0235 by **Monday, November 11**.

Please wear your nametags and meet at the Bay Club for carpooling to conserve parking. Departure will be promptly at 5:00 p.m.

## **Beginner's Line Dancing**

If you'd like to combine fun with exercise, join us on Monday afternoons for a new Beginner's Line Dancing class. This class will start on **Monday, November 11**, from 3:00–4:00 p.m. at the Bay Club. Just sign in at the front desk. No Fee. Open to All.

## **Don't be Intimidated by Art**

The Bay Club will be offering a Beginning Drawing/Art class beginning **Tuesday, November 12**, from 1:00–3:00 p.m. Classes will be for either four or eight weeks, with a break for the holidays. Kent Stansbury, who currently teaches art at Chimacum High School, will lead the class. A graduate of the University of Cincinnati with both an art and teaching degree in 1965, Kent's experience includes teaching high school and adult evening art classes for 20 years in Torrance, California, and co-owning (with his wife) the “Captain's Gallery” in Port Townsend for 13 years.

Class size is limited to 10 students with a fee of \$35 for 4 weeks. Kent promises you will have a fun learning experience saying, “Don't feel intimidated about getting started, we'll begin with the really easy stuff and progress from there.” All of the necessary supplies will be provided for you. Classes are open to all Port Ludlow residents.

Sign up at the Bay Club by **Tuesday, November 5**, for the first four weeks, and then you can continue for another four weeks for an additional \$35 if you would like—and we think you will. If you have any questions please con-

## **Come Explore the Magic of Watercolor**



Grace Easterbrook will be offering a total of six two-hour classes to anyone interested in an introduction to watercolor painting. The class will concentrate on the basics and will include in-depth discussions of materials, composition, color and color mixing, values, washes and textures. These basic classes should

be sufficient to provide the beginner with enough information to start on a path of discovery in this wonderful medium. Classes will begin at 9:00 a.m. on **Thursdays, January 9, 23, 30, February 6, 13, and 20**, at the Bay Club. Cost is \$60; materials are not included. Class is limited to six students so please register early at the Bay Club. Cut-off for registration is **Monday, December 30**. The first class will cover theory and a list of needed sup-



## Eating Around

### Khu Larb Thai

by Eline Lybarger

Khu Larb looks like a white stucco house with dark green trim complete with hanging flower baskets, and inside the colors match. It was a Friday night, and we didn't have reservations, resulting in a table next to the bar in direct line with the entry, butler's pantry, kitchen and restrooms. The traffic and the clank of dishes and silver were constant. Except for this table there is a nice Zen-like atmosphere. Everything is paced, balanced and relaxed. Even the framed artwork centered on the white walls, including a collection of antique serving spoons, is worth inspection.

The menu is several pages but divided into sections; the prices are mostly under \$10. We started with the house tea, which was light but flavorful. The first selection, Goon Kow Pode (\$8.95) described as stir-fried prawns, baby corn, mushrooms and onions, was mild with a hint of smoke flavor, nicely crisp vegetables and tender shrimp. Next was Gai Haw Bai Toey (\$7.95) described as cubed chicken marinated in coconut milk with six secret spices then wrapped in pandanus leaves and deep-fried. The six two-bite pieces of chicken were beautifully leaf-wrapped and accompanied by a delicious, acidic, slightly sweet, slightly peppery red dipping sauce. This was served with a simple salad of lettuce and cucumber with a light almost undetectable dressing.

Everyone's favorite was Chicken Curry (\$7.95) described as green curry chicken, bamboo shoots, pineapple, bell pepper, and Thai basil in coconut milk. We ordered the medium hot, which was perfect. There were many flavors that seemed to take turns in your mouth, with a heated finish. The coconut milk gave this dish some body and controlled the heat.

The portions were not excessive but certainly more than adequate. The service was efficient without being brusque or intrusive. On Fridays and Saturdays they have live music. We voted to return but to make reservations ahead so we don't get the same table.

**Khu Larb Thai**  
225 Adams Street  
Port Townsend  
360-385-5023

"Eating Around" wants to hear from you. Send us news on your favorite eating places—any place you've had a pleasant—or not—eating experience—within an hour's drive from Port Ludlow. Send your comments, criticisms, conclusions, and compliments to Bonnie Schoenemann, "Eating Around" Editor, at [bills@waypt.com](mailto:bills@waypt.com). Note: We reserve the right to edit your contribution to fit our

## Book Club to Discuss *Follow the River*

Author James Alexander Thom reconstructs a true story that starts when the Shawnee Indians attack a Virginia settlement in 1755, killing many of the residents who are living there. When the Indians leave, they take hostages with them—one a young married woman who is pregnant. She lives with the Shawnee for months, never giving in and finally escaping her captors, making a thousand mile journey to return to her own people. Join us on **Tuesday, November 12**, 7:00 p.m. at the Bay Club to discuss *Follow the River*, a gripping story of pioneer spirit and courage. Open to all. Questions? Call Martha Dawson at

## OPES comes to Port Ludlow with Spanish Wines and Tapas



The Olympic Peninsula Enological Society (OPES) has scheduled its November event at the Beach Club on **Friday, November 15**, 6:30 p.m. Port Ludlow members are planning the evening featuring Spanish wines and tapas. OPES is an educational group learning about

and extending experiences with fine wines. The November event will welcome Steve and Almudena Metzler of Classico Wines in Seattle to talk about wine regions of Spain. Eight wines with accompanying tapas will be served. Steve will include a wine from his vineyard in Spain.

Because space is at a premium early registrations are encouraged. The cost is \$20 for members and \$25 for guests. For information call Phyllis Hansen at 437-5152 or Dee McConnell at 437-7648. Mail reservations with your check

## Bay Club Speaker Series: Elder Law

Attorney Doris Hardyman will speak on Elder Law, **Tuesday, November 5**, 2:00 p.m. at the Bay Club. Don't miss this important and informative program. There is a lot that you need to know to stay fiscally and legally sound in these difficult times. No fee. It is open to the entire community, but reservations would be appreciated. Please call the Bay Club at 437-2208.

*Emergency Services continued from page 1*

there are multiple calls, or if the emergency is large scale, other districts respond with backup.

Kier described what citizens should do when faced with an emergency situation:

- Before an emergency occurs, make sure that home (red and white) fire signs with numbers are clearly visible so that emergency staff can locate your home.
- Call 911, not the fire station. The call will be answered at the jail and the caller will be asked if it is a fire, police, or medical emergency. Medical emergencies are funneled to the dispatcher.
- Describe the situation.
- Be patient with the dispatcher's questions. A unit has been sent even though the dispatcher continues to talk to you. Your information is relayed to the vehicles en route.
- Call as immediately as possible. Many situations are harder to deal with when there is a time lag.
- Follow your instincts. If something feels wrong, it probably is wrong.

In addition to dire emergencies, the Fire District helps residents in other ways. Help with a chirping smoke detector can be obtained by calling the fire station on Oak Bay Road at 437-2236 (not 911). Fire personnel will also help residents with heavy load lifting, stranded pets, and locked cars.

Emergency staff volunteers must possess interest and go through the same procedures as the career staff. They must pass a background check and have no record of criminal behavior including molestation and domestic violence. They must be deemed physically fit and undergo training commensurate with the duty, up to 340 hours in emergency and fire fighting techniques. Training is continuous. Drills are held on Wednesdays for volunteers.

## Garden Club Goes on Shopping Spree

The Port Ludlow Garden Club will charge forward on its annual Christmas shopping trip, **Wednesday, November 13**. Our bus will leave the Bay Club at 8:30 a.m. with a first stop at Molbaks in Woodinville. When we have finished gathering ideas and purchases, it will be lunch at the Newport Grill in Kirkland. The last stop is Wight's in Lynnwood, and home by 5:30 p.m. The cost is \$23 or \$21 with your PLGC membership discount. The cost of lunch is not included.

You need to register with Eline Lybarger at 437-7701, and send your check to PLGC, P.O. Box 65235, Port Ludlow, WA 98365.

## Cat Grass

*by Eline Lybarger*



The two cats who own me have reminded me that winter is coming and it is hard to find salad. In the cold weather the outdoor grass becomes tough and tasteless. The solution is indoor grass. In a pot shallow enough so they can reach it comfortably, place a few pieces of charcoal, some

potting soil, a thin layer of rye grass seeds, sprinkle with water, and place in a well-lighted location. In about a week you should have grass. These can be attractive pots, and more than one is advisable.

If you are not owned by a cat, you can use this green backdrop as a table decoration; just add some candles, rocks, shells and ornaments. When your grass starts getting shaggy, mow it with a pair of scissors, or invite in the neighbor's cat for a little salad.

All gardeners are in the process of closing down their gardens for the winter, so the garden articles in the *Voice* will also close down. See you in the spring.

## Port Ludlow Volunteer Disaster Services

by Pegi Graham



Disasters do happen! Earthquakes, fires, major wind storms, tsunamis and possibly terrorism are among the threats to our safety. Professional responders will be overwhelmed by mandated, high

priority needs during a disaster. It is therefore imperative that we are in control of our own environment.

In Port Ludlow's Villages there are 30 designated areas with volunteer Captains. Their duties are to collect information and assess needs that are relayed by a communications network to outside services as well to our Certified Emergency Response Teams (CERT).

CERT members have received training from the Federal Emergency Management Administration in fire suppression, triage, light first aid, organization at a disaster site, light search and rescue and other skills. CERT organizers Dick Padilla and Jack Piper may deploy them into areas when needed.

Members of Jefferson County's Department of Emergency Management and Fire Chief Wayne Kier spoke at our General Meeting on September 24. Bob Hamlin, who is Jefferson County Director of Emergency Management, and Mark Bowes, Jefferson County Safety Program Coordinator, provided an overview of their function and facilities in four segments: disaster planning, mitigation, response and recovery. They confirmed our need to be self sufficient during a disaster due to the size of the County. They offered to help critique our CERT and Radio Drills and to facilitate planning sessions. Chief Kier said he would continue to make his expertise and assistance available. During a disaster he is the Lead Coordinator in Port Ludlow.

Signs with "HELP" on one side and "OK" on the other are available from area captains. Remember to store the sign for quick, easy access, perhaps under the appropriate win-

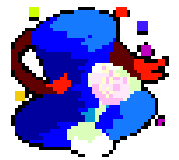
## Reminder! CPR/AED Training

Time to brush up on your life-saving skills and to add a new one. Since the Bay Club is now proud owners of Automatic External Defibrillators, it's important to augment your CPR skills with AED skills. If you have a current CPR card, you may take only the AED portion if you wish. Pre-registration is required at the Bay Club. The class will be held at the Bay Club on **Tuesday, November 12**, from 12 noon to 4:00 p.m. Cost for CPR/AED is \$25/person or \$35/couple. Fee for the AED class only is \$10/person or \$20/couple.

**Remember: the life you save may be someone you love!**

## Community Welcomed to New Years Eve Party

Purchase your tickets now for a wonderful evening to welcome 2003 at the Bay Club. There will be a live band, a delicious sit down dinner catered by the Silverwater Café and champagne at midnight. The price is \$35 for SBCA members and \$40 for others. You may view the menu and choose your entrée when you make your reservations at the Bay Club desk. Doors open at 7:30 p.m. and dinner served at 8:00 p.m. BYOB and wear party attire. Ticket sales close on **Saturday, December 21**. Seating limited to 100.



## Bay Club Speakers Series

"**Comparative Religions**" will be discussed in two sessions by Michael Boyar, M.Div., Th.M, personal growth facilitator on **Tuesdays, January 14 and 21**, 1:00-3:30 p.m., at the Bay Club. The charge for the two talks is \$20. Mr. Boyar will address the roots and philosophies of the world's major religions other than Christianity. Please purchase your tickets at the Bay Club prior to **Friday, January 10**.

## The End of Mail Service Threatened

by Barbara Wagner-Jauregg

The holiday season will soon be upon us, and unfortunately that means our mailboxes are becoming crammed with catalogues, some we want, and many we don't. But, imagine the surprise recently when residents of Bayview Village and Inner Harbor Village received the following notice in their residential delivery mailboxes:

### Your Mailbox Needs Attention

"Your mail has been attempted and does not fit into your mailbox. The Postmaster has informed me that there is no alternative but to hold your mail at the Port Hadlock Post Office for pick-up. You will need to get a larger mailbox. If you had (a) package, (the) box would not have fit."

Later a notice was left in all boxes from the Postmaster. He said in part, "It is the homeowners' responsibility to have a mailbox large enough for mail delivery on (a) daily basis. I'm sending this notice to the entire neighborhood, and (it) should be addressed within the next 4 to 6 weeks."

Many mailboxes in Port Ludlow are in kiosks that limit the width and height of the individual mailboxes. To rebuild these kiosks would be costly and tap Homeowner Associations' reserves. In this writer's opinion, this is an over-reaction on the part of the post office. If all classes of

## Hood Canal Focus of Workshop

The Hood Canal Coordinating Council (HCCC) and the Regional Water Quality Education Team are conducting a workshop on **Wednesday, December 4**, 9:00 a.m., at the Beach Club. Entitled "Check It Out, Measuring the Health of Hood Canal," the workshop will focus on why monitoring is important, what is monitored and why it is monitored. Also, local professionals will provide Hood Canal case studies.

Following the workshop, HCCC invites the community to join them for the 2002 Hood Canal Environmental Achievement Awards Program and Luncheon. Individuals and/or groups who have demonstrated outstanding efforts to protect and enhance Hood Canal's environmental quality through projects and activities will be recognized. To register or for more information, contact Sue Texeira at 360-275-4322, e-mail her at [suetexeira@charter.net](mailto:suetexeira@charter.net) or look at the HCCC website at [www.hccc.cog.wa.us](http://www.hccc.cog.wa.us).

## Eagle's Loft Retreat

by Bonnie Masi

Have you considered a non-profit educational and healing community ministering to the needs of adults, youth and animals in a holistic fashion, using traditional and alternative means?

Bonnie Masi, Executive Director of Health Harmony Assistance, has been building this project for two years with a dedicated staff of teachers, healers, counselors and therapists. Current day programs provide Spontaneous Art (teens and adults) and All It Takes (after school youth classes)—connecting with spirit, nature and animals to better balance energy, moods and emotions. Meditation/Healing classes for adults are offered every Wednesday, 7:00–9:00 p.m. Constellation Therapy is held once a month in Port Townsend—working out life issues (health, finances, and relationships) in a spiritually guided group interactive process.

An Eagle's Loft Retreat class sampling:

- Ecology, alternative energy, organic gardening, flora/fauna identification
- Arts—watercolors, music therapy, drumming, dance, acting
- Alternative and conventional healing modalities
- Guided imagery, meditation, writing, storytelling
- Tellington Touch, no-kill shelters and foster services for needy animal friends

We are looking for volunteers with a passion for helping disadvantaged youth, adults and animals, that are skilled in grant writing, fundraising, marketing and further program development. We seek just the right property and welcome ideas or land contributions. Health Harmony's 501c3 status allows 100 percent tax-deductible donations. For information on programs, board meetings, volunteering or how to receive our newsletter, contact me at 360-385-5111, [gobon@waypt.com](mailto:gobon@waypt.com).

## Latin Dance Classes

Classes in Latin dance will be offered next year.

Watch for the dates.

## Our Trees—Blessing or Curse?

by Robert J. Lawless

*For years the North Bay has struggled with the issue of trees. Now the same problem is occurring in the South Bay with neighbors and Villages pitted against one another. The opinion expressed here is that of the writer. Some readers will dispute the information and are invited to send responses to the Port Ludlow Voice at P. O. Box 65077, Port Ludlow, WA 98365.*

Certainly the answer to the above question is yes and no. Maybe it's a little bit of both, a shade of gray, depending on who owns them and if they create a problem or not. Below are a few statements supporting each side of the question. Let's start with the good that trees represent in our community. Then, in fairness, the bad will be presented.

### Pros

- Trees are beautiful. Some think they stabilize the hillside. Others claim they are a symbol of the Northwest; and, if you don't like them, you should go to the arid, treeless parts of the Southwest. Texas would be perfect.
- Trees provide privacy and screen away neighbors with prying eyes. Birds inhabit them. In fact, much wildlife depends upon them. Trees give shelter from the winds and protect us from harsh sunlight.

### Cons

- In the past ten years trees have increased more than fourfold in both size and number. Beautiful vistas of the Sound have become extinct. Property values of those who paid dearly for their views, have been greatly diminished. Fire-prone thickets and detritus from trees now exist. Areas that were once bright have now become dark.
- The clash over whether trees should be removed or not, and who should pay, has caused bitterness between neighbors. In other areas costly lawsuits have followed and vigilantes threaten to solve the problem.

### Slope Stabilization

- Trees don't really suck up much water in the rainy season but rather remove great amounts of water in the summer dry season when no drainage problems exist.
- Trees pose a hazard in windstorms.
- Trees block sunlight and cause moss to grow on roofs resulting in significant damage. Some, like the weed trees, alders, maples and willows, the so-called junk trees, are down right filthy and their leaf drop is a problem.

- Burglaries and other ugly incidents occur when trees block the view of the home.

### Compromise

- Leave specimen trees here and there to retain the "feel" of our community.
- Remove trees that are destroying the views purchased with the property.
- Do not remove trees to create new views.
- Create a special committee to decide decisions on tree removal with all points of view represented. Each problem would be reviewed on a case-by-case basis.
- Share the cost of tree removal.
- Plant trees that will not grow above the roofline.
- Remove or top at proper height self-seeding trees, regardless of species.
- The Ludlow Maintenance Commission (or South Bay Community Association) would rule on appeals.
- If CC&Rs don't accommodate these changes, they can then be changed to permit good control of our trees.

## Where is Randall Verrue?

The President and Chief Executive Officer of HCV Pacific Partners (HCV), owners of the Resort and associated properties in Port Ludlow, have received many letters from local citizens concerned about "The Club" membership plan and the future of our community. Two of those letters were written by Ron Dawson, a member of the Ad Hoc Committee and captain of the Men's Nine-Hole Golf Club.

In his second letter Dawson says, "I recognize that you have other projects demanding your attention. Now we have a situation where our community is stepping up the pace in this fight... We are a cohesive community with the necessary resolve to stay our course. Perhaps you may have waited too long to get personally involved to protect the reputation of your company, and to assure this community that what we think does matter."

Top management of HCV (San Francisco), including Mr. Verrue, was reported to be in Port Ludlow the week of October 21. Stay tuned, perhaps there will be new developments.



# Port Ludlow Village Council

## Meeting Highlights

by Maureen Poole

The last meeting of the 2001-2002 Port Ludlow Village Council year was held Thursday, October 3, at the Bay Club. Carol Saber, Vice Chairperson, conducted the meeting.

### Mining Aggregates in Washington

Ron Teissere of the Washington State Department of Natural Resources (WSDNR) gave an overview of the Surface Mining Reclamation Program. The State's main concern is the feasibility of the submitted reclamation proposal. The County must approve the location, size, depth, local impact, etc. of mining permit applications. Mines of less than three acres and forestry pits, where all materials removed are for the exclusive use in forestry roads and projects, require no permit. This explains why abandoned pits are visible in flights over Jefferson County. Ron also stated that performance bonds are required to assure reclamation, which may occur 50 or 100 years in the future.

Charlie Cortelyou of the Forks office of WSDNR stated that 570,000 acres are currently under their management. In addition to assuring that the Forest Practice rules are enforced, his Department also is responsible for fire fighting on these lands.

Bruce Chattin, Executive Director of WS Aggregates and Concrete Association spoke on the need for, and use of sand/gravel/concrete from general home building, to the expansion and repair of roads, shopping and parking areas. Many counties have refused mining operations and that means that neighboring counties are being called on to meet the growing demands.

### Sound Experience

Shelly Randel and Danille Turissine of Sound Experience, a nonprofit educational service that owns and sails the historic schooner *Adventuress*, thrilled us with a slide presentation of this magnificent ship and our beautiful area. Sailing on *Adventuress* is unforgettable and Shelly and Danille shared their experiences of how this ship affects both adults and children. Anyone interested in an educational sailing experience, or to sponsor a child or class can get more information by calling 379-0438 or checking [www.soundexp.org](http://www.soundexp.org).

## Village Council Agenda

The next meeting of the Port Ludlow Village Council (PLVC) will be held on **Thursday, November 7**, 9:00 a.m., at the Beach Club. The agenda will include Committee Reports and Plans for 2002-2003 with some reports submitted in writing:

- Community Development (in writing), Chair Larry Nobles
- Natural Resources (in writing), Chair Dick Ullmann
- Trails (in writing), Chair Marge & Tom Carter
- Disaster Services (oral report given at October 3 meeting), Chair Howard Morse
- Utilities, Chair Phil Otness
- Tax Committee, Chair Ron Null
- Festival and Farmer's Market, Chair Don Cooper
- Elections, Chair Frank Siler
- Ad Hoc Committee, Chair Randy Shelley

Other agenda items include:

- Developer/Resort Owner Report, Greg McCarry
- Town Meeting, speakers sign up before speaking; each speaker given two (2) minutes to speak; response (if any) from PLVC Board or Committee Chairs

The monthly workshop session will be held **Thursday, November 21**, 9:00 a.m., at the Bay Club. The next regular meeting will be **Thursday, December 5**, 9:00 a.m., at the Bay Club.

For last-minute agenda information, go to the PLVC website at [www.waypt.com/service/plvc](http://www.waypt.com/service/plvc).

### Committee Reports

Larry Nobles submitted a written Planning and Development report, as did Dick Ullman for Natural Resources, and Marge and Tom Carter for Trails. Check them out at either Club, along with complete minutes of the meeting.

Phil Otness, Utilities Chair, discussed his feelings about the tax revenue PUD collects from Port Ludlow and the fact that we receive no direct benefit. He is pressing for tax reductions, and can use volunteers to help round out his Committee as two members are retiring. Phil also re-

ported that the rumors about rate increases from Olympic Water and Sewer are unfounded, according to Larry Smith of that organization.

Howard Morse, chair of the Disaster Services Committee requested support for the Fire District Levy that will be on the ballot in November. A yes vote will also change the law so that fire districts would only need to ask for levies every four years rather than each year. That move would save districts in excess of \$10,000 (the amount needed to place an issue on the ballot) that could be better-spent on emergency services.

Connie Wilkinson reported that there is a new flyer outlining the drop sites and materials accepted at Jefferson County recycling sites. These flyers are available at both Clubs and for more information call Molly at 385-9944 or Jefferson Recycling at 385-7678.

Carol Saber, Chair of the Ad Hoc Committee, reiterated the Washington State decision that the current offering from PLA is illegal. She also stated the Ad Hoc Committee speaks for all residents in Port Ludlow, but that individuals are encouraged to write or e-mail HVC, or PLA principles with their concerns. Ad Hoc meetings are generally open meetings; only legal meetings need to be closed to other than Board members.

## PLVC Plans Town Meeting

*by Barbara Wagner-Jauregg*

The Port Ludlow Village Council (PLVC) meeting **Thursday, November 7**, at the Beach Club will be the first of what is hoped to be regularly scheduled town meetings. In discussing the new format, newly elected PLVC Chair Carol Saber says, "I am with (the residents) as a concerned member of the Port Ludlow community. This is their community; they elected us, the PLVC Board, to represent their interests before governmental agencies and with the Developer/Resort owner. We want to give a voice to their concerns. Each resident's opinion is very important to us."

Saber continues by saying, "As a community, we are facing some difficult times ahead. We have serious issues involving the possible Fred Hill Quarry expansion, the closure of the Hood Canal Bridge, possible increased taxation and criminal activity. All of these issues and more need to be addressed. Most important of all and closest to

home for all of us is the situation created by HCV Pacific Partners/Port Ludlow Associates (HCV/PLA). To my mind, this is the over-riding issue facing Port Ludlow at this time. Make no mistake about it; PLA's future affects all of us. Unfortunately, PLA and HCV have failed to recognize that the future happiness of the Port Ludlow residents is inextricably intertwined with the success or failure of their Port Ludlow venture. All the issues mentioned have serious consequences for every resident. For many of us, our most significant financial asset is our home. If the value of our homes depreciates, if we can't attract buyers for our homes when we want to sell them, every home owner in Port Ludlow loses."

Saber concludes by asking to hear the voices of the community—suggestions and opinions. She says the PLVC Board also welcomes volunteer help to assist in their efforts on behalf of the community. She cites the wealth of talent and expertise in so many fields of endeavor saying, "We need to tap these community resources in order to adequately tackle the difficult road ahead of us."

Town meeting guidelines call for every speaker to identify his or herself by name before being given two minutes to speak. Minutes will be taken to create a record so the PLVC Board can review the comments. When necessary, a response to speakers' comments will be made by a Board member or Committee Chair. E-mail commentary can be sent to [carolsaber@olympus.net](mailto:carolsaber@olympus.net) or mailed to P.O.

## New PLVC Officers and Directors

*by Maureen Poole*

North Bay residents Gene Carmody, Dwayne Wilcox and Lee Amundson from North Bay; Carol Saber and Ron Null from South Bay were elected to the PLVC Board for 2002-2003. Frank Siler reported that the Election Committee sent out 1,593 ballots to residents and property holders with 678 residents voting.

At the conclusion of the annual meeting on October 3, Carol Saber reconvened the Council meeting to elect the officers for 2002-2003. She first gave a heartfelt thanks to Sally Smith who has dedicated so much time, energy and effort over the last ten years to Port Ludlow issues. Carol was elected Board Chairperson, Phil Otness Vice-Chairperson, Connie Wilkinson Secretary, and Lee Amundson temporary Treasurer. Lee will remain as Treasurer for one more month while Board members consider a replacement. Carol suggested the need for a new Program Chair-

man to replace Sally. Connie requested creation of the position of Recording Secretary and mentioned that Glee Hubbard had volunteered. The Board approved each of these suggestions and will work out the details.

A sincere thanks was offered to the past Board for all their efforts for the community and best wishes were extended to the new Directors.

## PLVC Ad Hoc Committee Report

*by Randall Shelley, Committee Chair*

Following “The Club” proposal by Port Ludlow Associates (PLA), the Port Ludlow Village Council created what is now known as the Ad Hoc Committee (AHC). For details see Carol Saber’s report in the October *Voice*. Ms. Saber was our first AHC chair. She is now Chairman of the PLVC and has asked me to chair the AHC. The PLVC Board has concurred. Thank you for your hard and effective work, Carol.

Carol wrote to the State of Washington, Department of Financial Institutions, Securities Division concerning “The Club,” and we have a response dated September 19 which is printed as a sidebar in this issue (see page 4). PLA should have received this letter by September 24. (As of October 14 we have not yet seen PLA’s response due October 10.) PLA claims that as a result of the letter it has stopped solicitation. If you know of a solicitation after that time, please advise me at [r&kshelley@waypt.com](mailto:r&kshelley@waypt.com).

If you are one of the several who are just buying into the community who bought “The Club” and want your money back, let me know and I’ll put you in touch with the State—no charge. I will not disclose your name to the community.

The community was solidly opposed to “the Club” and I am sure it will reject any similar future effort by PLA to part us from our money.

AHC has spawned a legal committee. (Most of us are retired lawyers. We are advised by an active member of the Washington Bar.) We are working hard on the numerous legal questions that have and may come up and will be providing recommendations as the situation warrants.

**Golf**—The golfers are solidly opposed to “The Club.” There are many attractive alternatives in the area and given the glut of golf courses in the Pacific Northwest, the limited number of players from which these courses draw as well as the state of the economy, PLA is in a very weak posi-

tion.

**Marina**—The Yacht Club and non-yacht club slip holders solidly rejected “The Club.” With his permission I quote from a letter of September 2, 2002, by Roy Kraft, Port Ludlow Yacht Club Commodore, to the CEO of PLA’s parent:

*...We are offended by the management’s threat as clearly stated by the sales force that “you will be kicked out if you don’t join The Club.”*

*...If our Yacht Club members leave the Marina as a result of these threats, it will not only result in a revenue loss to PLA but it will also eliminate many of our on-the-water activities that are beneficial to both the Resort and the community. I can assure you that this will have a negative effect on residential home values as well as your ability to sell real estate.*

Like these two groups, all of the stakeholder groups in the community, without exception, report that their members have rejected “The Club.” In fact, I have found no one in favor of it. Many wrote to PLA and asked that it take “The Club” off the table. PLA refused, so the State did it for them.

**Personal Opinion**—What will come next, we do not know. Will PLA waste its time trying to change its proposal or convince the State to withdraw its letter so that it can legally try to sell something the community has already unequivocally rejected? Will PLA continue to severely misjudge the boating community by raising the rates, in one form or another, on what is already the second most expensive marina in Puget Sound and thus drive tenants away? Will PLA continue to alienate the people who pay the bills at the golf course—the members? And what about the condition of the Course and service at the Clubhouse? Will PLA continue to ignore the very competitive marina and golf course markets it is in and take another step toward destroying what it purchased from Pope? Will PLA complete the destruction of its credibility



## PUD Election Recommendation

by Phil Otness, PLVC Utilities Committee Chair

I have been following the Jefferson PUD activities this past year and have attended many of the Commissioner's meetings. In addition, I have reviewed most of the agendas for meetings I could not attend. I have also studied their budgets and auditors' reports.

It is my opinion that the current Commissioners are continuing to use tax revenues to support the operations and maintenance of their operating water and sewer systems. I have spoken to them many times on this subject, yet it appears from the proposed 2003 budget that they will continue to collect taxes to pay the majority of the salaries and expenses of the Commissioners and several employees. In addition a large share of the general and administrative expenses is allocated to tax revenues. The Commissioners spend the majority of their time and energy on the PUD operating systems and those systems should fund the majority of their expenses.

Secondly, I don't agree with several of the "Special Programs and Projects" that the Commissioners have authorized from tax revenues. However, I understand these decisions are their prerogative. These programs continue to be budgeted at \$180,000 and would include examination of a telecommunications system, as well as additional water or sewer systems. The proposed budget for 2003 reduces tax revenues a small amount from \$379,950 to \$341,955, with total expenses estimated at \$1,742,911. I have argued that tax revenues should carry only their fair share of the "overheads" or about the following:

- Special Programs and Projects: \$180,000
- Water and sewer direct expenses of operations: \$1,240,000
- Commissioners' Expenses and Management Overheads: \$324,000

Therefore, the allocation of overheads for Special Programs and Projects should be about 12.7 percent of this total ( $180/180+1240$ ) or approximately \$41,000 to be its share of the \$324,000 overheads. This would result in tax revenue assessments of about \$221,000 maximum. Any additional taxes would be a direct support of the water and sewer operations! At year-end 2001 the PUD held Unreserved Retained Earnings of \$1,217,134. Most of this cash was generated from tax revenues but it is hard to make certain as the PUD Commissioners have not seen fit to do budget reconciliation statements comparing Income and Expenses with budget as all public agencies are obligated to do.

Since most of the residents in Port Ludlow as well as most all of Jefferson County don't agree with (1) the "Special Programs" authorized by the Commissioners, or (2) the allocation of "overheads" charged to taxes, and (3) the lack of budget statements comparing tax revenues with expenses, then the democratic way to change these policies is to elect new commissioners!

Therefore, I strongly recommend you elect David Sullivan and Dana Roberts to replace Commissioners Kenneth McMillen and Richard Shipman. We must change the PUD to be a professionally run organization.

## Trail Topics

by Marge Carter, PLVC Trails Committee Chair



In the August 2002 issue of the *Voice*, a long article appeared about the new plan for coordinated maintenance of Port Ludlow's trails. Since then, steady progress has been made.

For example:

- Regular clearing, mowing, and brushing work has been done all summer on the Timberton Loop by both volunteers and paid contractors. If you have been on the Loop recently, you have noticed how nice it is.
- The Ludlow Falls Interpretative Trail has been cleaned twice by Volunteers from the Port Ludlow office of Windermere Real Estate, who adopted this trail. Trails Committee personnel have repaired one of the staircases, re-set the "danger" signs, cleaned the existing signs, improved the appearance of the Trails Kiosk by installing landscaping, and updated the bulletin board. Work on several more interpretive signs is underway.
- Various sections of the Around-the-Bay Trail received maintenance during the summer. The Coe family of North Bay spruced up the section along Oak Bay Road this spring, and volunteers from the Trails Committee have scraped away moss from the trailsides in the area of the North Bay Condos. Workers hired by the Trails Committee cleared several other sections of the trail which had become overgrown and performed routine maintenance in other sections.
- A trail signs project is in the final planning stages.

Standard signs like the ones used in the National Parks have been purchased, and a method for erecting them has been finalized. The signs will be mounted on wooden posts prepared by the Bay Club Woodworkers. Spikes that can be pounded into the ground will be used to hold the posts in place. These standard signs will be used to point out the location of trails throughout the entire community.

## Scats and Tracks

by Dick Ullmann, PLVC Trails/Natural Resources Committee

I always knew that retirement life would include a lot of reading. But never did I imagine that this would include a book on animal scat! I wasn't even familiar with the word until I joined the Hiking Club and noticed others staring and wondering who or what produced a pile in the middle of the trail. Someone on our Committee suggested an informative piece in the *Voice* on the identification of animal scat. Thus, my newfound interest.

Rushing to Sport Townsend on Water Street, I snatched up *Scats and Tracks*—a Field Guide to the Signs of 70 Wildlife Species. If you are really “into” this stuff, this is the book to have. I learned that there are all kinds of shapes and sizes of scat to help identify the guilty party. The book includes a centimeter/inches ruler so that you can actually measure this evacuation when you find it. I'm not at the measuring stage yet, but you can be sure that this little book will be in my backpack on the next Hiking Club adventure.

A picture is worth a thousand words. This book has illustrations of the scats and tracks of any animal that interests you. In addition, Committee member Hank West suggested that I check out a web page on scat (yes, really) which is [www.bear-tracker.com/animalscat](http://www.bear-tracker.com/animalscat). Here you will actually find photographs of scat to help you in the identification process. This would make a great party game! Cut out the pictures. Match them to the animal involved. Your guests would love it!

So much for my new retirement pastime. If you see some guy around Port Ludlow kneeling down with a book in one hand and a ruler in the other, it may be—and it probably will be “you know what” that I am checking out. On the other hand, after this article hits the streets, there will undoubtedly be many people out there becoming experts in sizes, shapes and configurations. And who knows? Maybe a new club will be born—like Scats R Us.

## PLVC Workshop Looks Ahead

by Barbara Wagner-Jauregg

Newly elected directors to the Port Ludlow Village Council (PLVC) were welcomed to their first workshop meeting on October 17. Phil Otness, Vice-Chair, led the session due to the absence of Carol Saber, Council Chair. Glee Hubbard, volunteer Recording Secretary, was introduced.

Most of the workshop discussion centered on improving PLVC monthly general meetings and increasing attendance. It was generally agreed that meetings should not exceed two hours, and that guest speakers should address issues that interest and affect the lives of Village residents. Attention was called to the demographic shifts occurring in Port Ludlow, particularly the influx of young working families who are attracted by the relatively low cost of land in North Bay. The suggestion was made that at least some of the general meetings should be held at night or on Saturday in order to provide an opportunity for these newer residents to participate.

Port Ludlow Associates (PLA) CEO Greg McCarry urged the Council to look further ahead to the time that the developer completes build-out and leaves Port Ludlow. For instance, he asked, “Should the community buy the utility company?” He stressed decisions would have to be made within the next five years about who would own trails, common areas, the Twin Islands, etc. Further discussion touched on expansion of the North Bay Drainage District to cover all of Port Ludlow and rolling the utility company into that agency.

Director Ron Null, who chairs the Property Tax Committee, says his group will focus its efforts this year on areas where we don't get our money's worth—such as the PUD and Port Commission. Election Chair Frank Siler expressed concern over the amount of money expended on postage for the annual election. A number of alternative ideas was discussed and a new system is expected for the 2003 election.

Director Duane Wilcox, who also serves of the Jefferson County Planning Commission, announced that 63 acres of land were being recommended for light commercial including a parcel at Discovery Bay where the landowner has obtained a Best Western franchise. He announced the Commission would consider the Fred Hill project on



# Village Activities Calendar

*Most events are open to everyone in the community unless members-only is indicated, or are obviously special-interest groups*

## November

### Fri., November 1

1:00 p.m.-4:30 p.m., Play'n With Clay, Bay Club

### Sat., November 2

9:30 a.m.-2:00 p.m., Play'n With Clay, Bay Club  
6:00 p.m., Pre-Holiday Dinner Dance, Beach Club  
4:00-9:00 p.m., PLYC Election of Officers, Bay Club

### Mon., November 4

9:30 a.m., LOA Board of Directors, Beach Club (Members)  
10:30 a.m.-noon, PLCC Outlook SIG, Bay Club (Members)  
1:00-4:30 p.m., Bird Carving Class, Bay Club  
6:00-8:00 p.m., Dine and Discover Potluck, Bay Club

### Tues., November 5

2:00-4:00 p.m., "Elder Law" Speaker, Bay Club  
2:00-5:00 p.m., Plush Investment Meeting, Bay Club  
4:00-7:00 p.m., Dance Lessons, Bay Club

### Wed., November 6

8:00 a.m.-12:30 p.m., Artists League, Bay Club  
11:00 a.m.-1:00 p.m., First Wednesday Luncheon, Beach Club  
6:00 p.m., All-Port Ludlow Mexican-Caribbean Potluck, Beach Club  
7:00-9:00 p.m., Radio "How to Use" Boating Class, Bay Club

### Thurs., November 7

9:00 a.m.-11:00 a.m., Village Council Meeting, Beach Club  
1:00-4:00 p.m., Peninsula Wood Carvers Meeting, Bay Club  
3:00-4:00 p.m., A Course in Miracles, Bay Club  
5:00-6:30 p.m., Ballroom and Country Dance Practice, Bay Club

### Fri., November 8

8:00 a.m., Hiking Club assembles for Mount Zion Trail Hike, Bridge Deck  
9:00 a.m.-noon, Flu Shots, Bay Club  
3:00-4:00 p.m., Inner Harbor Board Meeting, Bay Club  
7:30 p.m., Ludlow Little Theatre Play, Bay Club

### Sat., November 9

9:00-11:00 a.m., LMC Board of Trustees, Beach Club (Members)  
7:30 p.m., Ludlow Little Theatre Play, Bay Club

### Sun., November 10

2:00 p.m., Ludlow Little Theatre Play, Bay Club  
5:00 p.m., Deadline for *Voice* Submissions

### Mon., November 11

9:00 a.m.-noon, Bayview Board Meeting, Bay Club

1:00-4:30 p.m., Bird Carving, Bay Club

3:00-4:00 p.m., Beginner's Line Dancing Classes begin, Bay Club

4:00-8:00 p.m., Beach Club Remodel Open House, Beach Club

6:30-9:00 p.m., PLCC Carpool to WSU Field Trip, Bay Club (Members)

### Tues., November 12

Noon-4:00 p.m., CPR/AED Training Class, Bay Club  
1:00-3:00 p.m., Beginning Art Class, Bay Club  
1:00-3:00 p.m., PLVC Trails Committee Meeting, Bay Club  
2:00-4:00 p.m., Poetry Writing Group, Bridge Deck  
7:00-9:00 p.m., Book Club Meeting, Bay Club

### Wed., November 13

8:00 a.m.-12:30 p.m., Artists League, Bay Club  
8:30 a.m.-5:30 p.m., Garden Club Christmas Shopping Trip  
10:30 a.m.-12:30 p.m., Rubber Stamp Club, Beach Club

### Thurs., November 14

9:00-10:30 a.m., South Bay Coffee Klatch, Bay Club (Members)  
9:30 a.m.-12:30 p.m., Woodridge Homeowners Meeting, Bay Club  
10:00 a.m., Drainage District Meeting, Beach Club  
Noon-2:00 p.m., PLCC Genealogy SIG, Bay Club (Members)  
2:30-4:30 p.m., PLCC Board Meeting, Bay Club  
3:00-4:30 p.m., A Course in Miracles, Bay Club  
5:00 p.m., Independents Carpool to Potluck, Bay Club  
6:45-10:00 p.m., Dancers-By-The-Bay Autumn Dance, Bay Club

### Fri., November 15

9:00-11:00 a.m., SBICA ARC Review Committee, Bay Club  
5:00-7:00 p.m., SBICA Cocktail Party and Art Show, Bay Club (Members)  
6:30 p.m., Evening of Spanish Wines and Tapas (OPES), Beach Club

### Sat., November 16

10:00 a.m.-4:00 p.m., French Cooking Class, Bay Club  
6:00 p.m., Italian Potluck, Beach Club (Members)

### Mon., November 18

10:30 a.m.-noon, PLCC Special Topics SIG—Basic Backups, Bay Club (Members)  
1:00-4:30 p.m., Bird Carving, Bay Club  
5:00-8:00 p.m., SBICA Potluckers, Bay Club (Members)

### Tues., November 19

1:00-3:00 p.m., Beginning Art Class, Bay Club  
 1:00-4:00 p.m., Fly Fishers General Meeting, Bay Club

### **Wed., November 20**

8:00 a.m.-12:30 p.m., Port Ludlow Artists League, Bay Club

### **Thurs., November 21**

9:00-noon, PLVC Workshop, Bay Club  
 3:00-5:00 p.m., Northwest Earth Institute Meeting, Bay Club  
 3:00 p.m., Bowling and Dinner in area, All Star Lanes, Silverdale  
 5:00-6:30 p.m., Ballroom and Country Dance Practice, Bay Club

### **Fri., November 22**

8:00 a.m., Hiking Club assembles for Duckabush River Trail Hike, Bridge Deck  
 9:00-11:00 a.m., SBCA Board Meeting, Bay Club

### **Mon., November 25**

10:30 a.m.-noon, PLCC Photo SIG, Bay Club (Members)  
 1:00-4:30 p.m. Bird Carving, Bay Club  
 3:30 p.m.-5:00 p.m., Teal Lake Village Board Meeting, Bay Club  
 6:00-9:00 p.m., "Late Night at the Club," Bay Club

### **Tues., November 26**

1:00-3:00 p.m., Beginning Art Class, Bay Club  
 2:00-4:00 p.m., Poetry Writing Group, Bridge Deck  
 7:00-9:00 p.m., Coast Guard Auxiliary, Bay Club

### **Wed., November 27**

8:00 a.m.-12:30 p.m., Port Ludlow Artists League, Bay Club  
 10:00 a.m., Drainage District Meeting, Beach Club  
 10:30 a.m.-12:30 p.m., Rubber Stamp Club, Beach Club

### **Thurs., November 28**

Happy Thanksgiving, Bay Club Closed

### **Future Events**

December 2, Lewis and Clark Talk  
 December 4, Deck the Halls Decorating  
 December 5, Tree Lighting Ceremony  
 December 6, Artists League Art Walk  
 December 8, Arts Council Holiday Concert  
 December 14, Bay/Beach Clubs Holiday Dinners  
 December 15, Leavenworth Snow Train Trip  
 December 21, Holiday on the Docks  
 December 31, Bay/Beach Clubs New Year's Eve Parties  
 January 9, 23, 30, Watercolor Classes  
 January 9, 16, 23, 30 Beginning Computer Classes  
 January 14, 21, Comparative Religions Lecture

## **Dine and Discover Club**

The Port Ludlow community is invited to the Bay Club on **Monday, November 4**, at 6:00 p.m. for a potluck dinner. Elaine Grinnell, a retired teacher of Native American studies in Port Angeles, will be sharing her K'lallam culture, language, accomplishments, and future with us. She will bring baskets and drums as well as art items of her ancestors.

Please sign up at the Beach Club or the Bay Club to bring a potluck selection. Bring your own table setting, beverage, and \$2 to cover expenses. Call Hilda or Michael Cahn with questions at 437-8223.

### **Lewis and Clark—The 200th Year Anniversary**

When they dipped their oars into the Missouri River and started rowing west through Indian country almost 200 years ago, Lewis and Clark were looking for something they would never find—because it wasn't there. The Northwest Passage, the fabled missing link in a continuous navigable waterway between the Atlantic and the Pacific oceans, existed only in the explorers' minds, but its image was enough to move them forward and that was enough to alter history.

On **Monday, December 2**, Washington State's critically important role in the Lewis and Clark Expedition will be the topic presented by David L. Nicandri, Director of the Washington State Historical Society. He believes Washington's role in the Lewis and Clark saga is one of the most undertold in all of American history. He will retrace the Corps of Discovery's footsteps in our state and offer several new and provocative historical interpretations.

All Port Ludlow residents and guests are invited to attend this revealing talk on **Monday, December 2**, 6:00 p.m. at the Beach Club. Sign up at either the Beach or Bay Clubs and bring a dish to share. Bring a beverage, your own table setting and \$2 to help cover expenses. Call Dick or

## **Bowling and Dinner**

Sign up before **Tuesday, November 19**, for bowling on **Thursday, November 21**. We'll meet at the All Star Lanes in Silverdale at 3:00 p.m. and then have dinner at a currently undisclosed location. Arrange your own transportation. All Port Ludlow fun lovers are invited.

# Beach Club Update

*Sally Orsborn is the Beach Club editor. Submit your articles to her by e-mail at [orsborn@olympus.net](mailto:orsborn@olympus.net) or call her at 437-0670 no later than the 10th of the preceding month.*

¶ Denotes Beach Club Members Only Activity

## Reminder!

The LMC Board of Trustees  
now meets on the second  
Saturday of the month at 9:00 a.m.¶

## Lot Owners' Association

*by Dave Harris*

The LOA Board met on Monday, October 7, and heard the committee reports.

Program Chairman Stan Kadesh reported the LOA Pre-Holiday Dinner Dance will be held on **Saturday, November 2**, at the Beach Club, featuring a catered full-course meal (BYOB) and a live band at \$18 per person. All of Port Ludlow is invited to attend.

Lenetta Johnson proposed LOA sponsor a special event to solicit more participants in community projects such as disaster awareness. A new committee was appointed to organize an appropriate program.

The Welcoming Committee visited several new families. Further contacts are awaiting copies of the new directory. Names of new homeowners appear in the *Voice*.

Fine Arts has been very active and is in the process of finishing some art objects designed for holiday decorations. The "elves" may have their debut soon.

The Literary and Performing Arts Poetry Group is meeting twice a month. New ideas are solicited for performing arts events. Suggestions include inviting the Chamber Singers sometime next year and special "piano bar" Friday sessions. Many events are scheduled at the Beach Club and Bay Club in the next several months. It was suggested a group be formed to oversee and coordinate events to avoid duplication of dates. While each event deserves to be conducted without intrusion by an oversight group, coordination may enhance the opportunity for all to participate.

A new trail has been "laid out" in North Bay connecting Rainier (between Swansonville and Walker) via the greenbelt to Oak Bay Road. While it has been staked and can be walked, rough trail gear is recommended. Hikers and homeowners are asked to comment.

A weeklong Clean Sweep is scheduled for **Monday, November 4, to Monday, November 11**. The Board thanked the Committee for their fine efforts. The Sunshine Committee has been very active. Details are presented in the *Voice*. Items of interest at PLVC are also covered in the *Voice*.

President Orsborn reported the PLVC Ad Hoc Committee has initiated many efforts regarding "The Club." Full details are reported in the *Voice*. The LOA mailing to non-resident members containing pertinent articles from the *Voice* prompted several sincere thanks for the information.

LMC will be voting on the new Greenbelt Committee proposal that spells out protocol for "trees & views" at their October 12 meeting. Dr. Cahn reported that the defibrillator is back on the agenda as a fund-raising item since the possibility of other funds is no longer available. If LMC will accept, and take responsibility for the unit, a fund-raising effort for the equipment may be initiated. The LMC Marketing Committee has requested a list of concerns regarding the Beach Club remodel, and is compiling a list of supporters for the remodel effort. The Port Ludlow Yacht Club has issued a questionnaire to its members regarding their desires for a facility in the expanded Beach Club.

Robert Lawless gave an hour-long presentation/discussion on the "Protection of Views in North Bay." He was reminded this discussion has been ongoing for years and that LMC is considering adoption of new Greenbelt policy that address the issue.

The next LOA Board Meeting will be held on **Monday, November 4**, 9:30 a.m. at the Beach Club.¶

## LMC Board of Trustees Meeting

by Marie Lytal

President Bill Anderson presented an updated Beach Club Remodel Schedule and advised the Board on the progress of the Marketing Committee at the October 14 LMC meeting. He has signed a letter dated October 14 that is being sent to all LMC members which comprehensively outlines the reasons for the remodel of the 34-year old Beach Club. The letter further explains the planning process which includes surveys, licensed architectural designs, engineering studies, professional estimates for construction and furnishings, countless volunteer hours from the various committees, what the remodeling entails and discusses the total estimated cost of \$1.4 million that would be shared by a membership of 1,076.

The letter requests a response by October 28 and then a second mailing will go out in November, followed by an Open House at the Beach Club on **Monday, November 11**, from 4:00 to 8:00 p.m., when everyone will receive guided tours of the entire facility. Ballots for actual voting on the Beach Club remodel will be mailed on **December 2**, with final ballot receipt due on **January 10, 2003**. If approved, construction would be completed by **April of 2004**.

It is imperative that all members vote, as we need a total approval vote of 538; and, of that approval vote, there must be 2/3s of the condominium owners approving and 2/3s of the lot owners approving. Since several lot owners have more than one lot but only one vote, we lose 123 votes right off the top.

Dan Collins, Finance Chairman, said the \$1.4 million expense for the remodel does not reflect any donations that will be actively solicited. At that figure, the cost to each member family would be \$1,300, which could be paid up front or stretched out in yearly payments with interest over the length of the debt.

In other business, Beach Club Manager Dick Smith advised our long-awaited new chairs for the Bay View Room are en route, and should be in place before our next Board meeting. He reported the pool table is being moved downstairs to the Cove Room where it will join a new ping-pong table until the floor is repaired in the game room. The table, it turns out, is a Brunswick manufactured about 1890 to 1910, and possibly came from the old Port Ludlow Hotel.

Larry Nobles complimented Dick Smith and his staff for accomplishing over 41 maintenance and repair tasks out of 64, and advised, with the exception of one or two, all would be done before the end of the year. He also said bids have been requested for the remodel of the upstairs restrooms, and that work would not progress before the busy holiday season.

In other business, Randall Shelley, a retired attorney, was confirmed as a member of the Covenants and Regulations Committee, and D. A. Routt has agreed to continue serving as Chairman. The final draft of the Greenbelt Committee Guidelines was amended and approved by the LMC Board, thereby ending the tree-cutting moratorium, with the exception of one area currently under appeal.

## Mexican-Caribbean Night for All Ages

by Mike Fessler

What a night! Take a trip to both Mexico and the Caribbean by way of the Beach Club on the evening of **Wednesday, November 6**, at 6:00 p.m. A big potluck event is planned for all ages and for all of Port Ludlow! Join in by bringing your favorite Mexican or Caribbean main dish or dessert to share. There will even be a prize for the best one. Tango Argentine Dancers will provide the entertainment and may even teach us a few of the intricate steps.

Please reserve with \$3 per person paid at the Beach Club office. Then bring your family, your Mexican dish, your own beverage and place settings and join in the festivities. Call Kim at the Beach Club 437-9201, or Mike Fessler at 437-5089, if you have questions.

## An Italian Potluck for Homeowners

by Virginia Moyer

A night in Italy! North Bay residents are invited to homeowners' potluck. Save the evening of **Saturday, November 16**, at 6:00 p.m. Sign up at the Beach Club to bring your favorite Italian dish, salad or dessert. Bring your own place settings. Wine and soft drinks will be served. The cost is \$5 per person.

## North Bay Clean Sweep in November

Autumn is here. Time has come to again send out an alert to the loyal North Bay Clean Sweep Committee that the fall sweep will be in progress during the week of

**November 4–11.**

Clean Sweep is a dedicated LOA (Lot Owners Association) committee that never holds meetings, yet gets the work done. Thirty family groups are involved, each one taking responsibility for a few blocks of the neighborhood. Members are reminded by e-mail or through the *Voice* prior to the first week in January, May and November that another sweep is due. Four couples give a sweep of major roadways mid-way during the four-month periods. Some of the clean sweepers have been with the program since its inception eight years ago.

If you would like to lend a hand, please let Jerry or Diane Purdy know at 437-1262. We like to maintain a substitute and waiting list. Occasionally committee members are gone for an extended period of time and would like someone to take a route temporarily. We encourage all community members to take responsibility for trash seen on our roadways in between scheduled sweeps.

School-age residents are encouraged to get involved in their community by picking up along the streets in their



### Reminder to Dog Owners

So we all can enjoy our walks please carry a plastic bag and clean up after your dog, large or small!

## North Bay Welcomes Newcomers

Please welcome your new North Bay neighbors!

Todd and Jaci Garringer  
Harvey and Carol Hegstrom  
Patrick and Karyn Shannon  
Gregory and Joyce Trzaska  
Dave and Danielle Turissini  
Rex and Suzanne Whipple

Puget Loop  
Camano Lane  
Rainier Lane  
Jackson Lane  
Puget Loop  
Schooner Lane

## Beach Club Year-End Party Open to All

*by Bernie Robinson*

Ludlow Maintenance Commission (LMC) invites all Port Ludlow residents to its New Year's Eve Party at the Beach Club. Mark your calendar to attend an informal fun-filled evening hosted by Bernie and Robbie Robinson. This year's theme is Game Shows of the Past (and perhaps present). Naki'i will provide oldies music and a light supper will be served. More details will be forthcoming.

## Pre-Holiday Dinner Dance

*by Stan Kadesh*

The band is tuning up, the chef is ordering the food, the Beach Club has been reserved and final touches are underway to make the Pre-Holiday Dinner Dance sponsored by the Port Ludlow Lot Owners Association (LOA) the affair of the year. Save the date, **Saturday, November 2**, at 6:00 p.m.

Chef Randall will serve another of his scrumptious dinners including Baron of Beef, and/or chicken, salad, veggies, pasta, dessert and coffee. Following dinner, dance to the music of the 40s, 50s and 60s played for you by the Gary Hausam Group. All this for the unbeatable price of only \$18 per person including tax and tip!

Reservations are now being accepted at the Beach Club office. Don't hesitate. Seating is limited. This affair is open to all. Call your friends and neighbors, reserve a table and prepare for one fantastic night of dining, dancing and entertainment.

## French Cooking Class

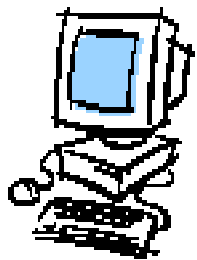


The date is **Saturday, November 16**, 10:00 a.m. at the Bay Club. There is room available in this hands-on class to be taught by Heidi Knodle (straight from San Francisco). The menu is posted with the sign-up sheet. Cost is \$35. You will

help prepare and then enjoy a delicious French Provincial dinner. Recipes will be available, and cook books to browse through. Be sure to bring an apron and a chef's knife.



## Computer Club News



The Port Ludlow Computer Club (PLCC) is having a "field trip" meeting at the WSU site in Port Hadlock on **Monday, November 11**, at 7:30 p.m. Dave Brader, the Technology Coordinator/Community Educator at the site, will be talking about the new fiber optic backbone in Jefferson County that allows for the more efficient sharing of information between County agencies. He will explain what this is and what its usage is now and in the future. He will also demonstrate the new teleconferencing capability. This is a wonderful opportunity for you to see what is happening on the technology front in our area! Carpools will be leaving the Bay Club at 6:30 p.m., or you may drive to the WSU facility at 201 West Patison in Port Hadlock.

The Office Special Interest Group (SIG) investigates the operation of Word, Excel, PowerPoint and Publisher applications. If you have problems using the programs or want to use an application to accomplish a task and need help, come and let us try to come up with an answer. Barbara Sexauer, our new PLCC President, will review Excel and answer your questions about the application.

The next Photography SIG is **Monday, November 25**, 10:30 a.m. at the Bay Club. Bring your questions, which will be answered or put on the research list to find the answer. The group will address film, digital or general photography issues. Review of speed of passing subject vs. shutter speed and hand held stability vs. shutter speed will be covered. Come and share in the learning process.

Special Topics SIG this month will be on Basic Backup Techniques with Warren Berg.

SIG times are noted in the Village Activities Calendar (see page 19). These meetings are for PLCC members only. Visitors are always welcome at the General Meeting. For information about joining PLCC, contact Janice Downs at 437-0784, or e-mail her at [jpdowns@cablespeed.com](mailto:jpdowns@cablespeed.com). For more information about the PLCC and its activities, see



## Announcing Beginning Computer Classes

The Port Ludlow Computer Club (PLCC) classes for beginning computer users is offered as a community service and is taught by Bernie Kestler at the Bay Club. Membership in the PLCC is not required. Approximately 500 Port Ludlow residents have already attended this popular course and early registration is recommended. The class is suitable for beginners, for people contemplating a computer purchase and generally for people who wish to understand or brush up on the basics of Windows 95/98/Me/XP, e-mail, letter writing and browsing the Internet.

The next series of five classes will start on **Thursday, January 9**, and continue for four more **Thursdays, January 16, 23, 30 and February 6**. Sessions are held at the Bay Club from 2:00–4:30 p.m. The fee is \$30 and includes an easy-to-use text plus all course materials. If you have interest or wish to register, please call Bernie Kestler at 437-5102.

## New PLCC Workshops!

New hands-on workshops for Computer Club (PLCC) members will be conducted at Peninsula College's PC Laboratory in Port Hadlock. There are 20 machines, so class size is limited. You must sign up with the leader before the class.

**Saturday, November 16**, 9:30-11:00 a.m.—Beginner/Intermediate Level Navigating the Internet, led by Pat Awisus and Barbara Sexauer. Sign up with Barbara Sexauer, [bobarb@Olympus.net](mailto:bobarb@Olympus.net) before **Sunday, November 10**.

**Saturday, November 23**, 9:30-11:00 a.m.—Introduction/Orientation to the XP Environment, led by Warren Berg and Mark Garcia. Sign up with Warren Berg, [warrenb@cablespeed.com](mailto:warrenb@cablespeed.com) before **Sunday, November 17**.

## Beginning Excel Class

An introduction to Excel 2000 (or Excel XP) will be held in December using the Hadlock PC Lab. The first session will meet at the Bay Club on **Thursday, December 5**, from 2:00-4:00 p.m. The second session will be at the Lab on **Saturday, December 7**, from 9:30-11:00 a.m. Class size is limited to 20. Sign up with Barbara Sexauer, *bo-*

# Bay Club Update

Janet Force, Editor

For information, call Linda Colasurdo at 437-2208.

Janet Force is the Bay Club editor. Submit your articles to her by e-mail at [j&d@waypt.com](mailto:j&d@waypt.com) or call her at 437-0419 no later than the 10th of the preceding month.

s Denotes Bay Club Members Only Activity

## SBCA Board of Directors Meetings

Held 4th Friday of the Month at the Bay Club at 9:00 a.m.

All SBCA members are welcome.

## Bay Club Winter Hours

Monday through Friday, 7:30 a.m.–5:00 p.m.

Saturday, 9:00 a.m.–5:00 p.m.

Sunday, Closed

## South Bay Community Association (SBCA) Highlights

by Tom Murray, Association President

First of all, thank you for your response to our letter to Greg McCarry, which we copied to all of you, about “The Club at Ludlow Bay.” Your verbal comments, e-mails, letters and telephone calls in such abundance show a remarkable solidarity that is so overwhelming that surely “they” will get the message that “we” are united against the whole idea. One of the drawbacks of doing an article for the *Voice* is the long lead-time inherent to the process, so try to get on an e-mail list like Ron Dawson’s [canamera@olympus.net](mailto:canamera@olympus.net) to keep up to date. For those of you who have asked, we have received no reply or acknowledgment from Port Ludlow Associates (PLA) that our letter has even been received.

Now, on to better and more pleasant matters. We are thinking of increasing our Associate Membership to the Bay Club so if you feel very strongly about this, contact one of your Board members or better still, attend the Directors’ meeting on **Friday, November 22**, at 9:00 a.m. at the Bay Club. We visited this subject in 1997 and again in 2001, so it is due.

Our monthly cocktail parties are becoming the “in place to be” on the second Friday of the month from 5:00 to 7:00 p.m. Remember, you must either be a member or houseguest to participate; and if you are neither and still want to come, see above and consider applying for Associate Membership.

Our esteemed and newly elected leader of the PLVC nearly had an accident recently when leaving the Bay Club. A lifetime in aviation tells me that near misses lead to more near misses and eventually to accidents. So while we struggle with the County—please, please be careful when leaving the Club. The last time this subject was brought up was June 2000 and it is an ongoing problem that must be resolved.

A nice sequel to a suspected security problem was solved when the missing Mah Jong set showed up. Guess where? In our own Lost and Found, so in the future let’s not rush to judgment.

Our Architectural Review Committee (ARC) is struggling with several problems, mostly involving trees. Please help by:

- Knowing and observing your CC&Rs
- Consulting your neighbors
- Using one of our approved arborists when necessary

We really don’t want to be the “Heavy” but the law is on our side and if we must we can resort to that approach.

Basically, one big reason why Port Ludlow is such a nice place to live is the people. We all know that, so let’s decide to leave a “little elbow room” for “the other guy.”

We have planted new pansies to decorate the front entrance to the Club. These, together with the fall colors are

## Free Spirits

On **Saturday, December 14**, from 6:00 to 10:00 p.m., the Free Spirits will host a holiday season celebration. This will be a beautiful and festive event with a menu featuring prime rib. For entertainment, we will have a return engagement by the well-known Victorian Chamber Singers of Port Townsend. Watch the Bay Club lobby in early November for a poster. Seats will fill up fast, so put this date on your calendar! ,

## Upcoming Events at the Bay Club

Watch the *Voice*, Bay Club bulletin board and posters for more information on these fun activities:

### Deck the Halls Decorating

Lots of volunteers will be needed to "Deck the Halls" on **Wednesday, December 4**, at 2:00 p.m. See our new decorations unveiled!

### Tree Lighting Ceremony

Our lights go on **Thursday, December 5**, from 4:00–6:00 p.m. There will be a wassail bowl and piano music to accompany caroling. 5

## Late Night at the Club

Members of SBCA are welcome to "Late Night at the Club" on **Monday, November 25**, from 6:00–9:00 p.m. There will be big screen football watching (the Eagles vs. 49ers), with popcorn to munch, swimming, exercise, games, etc. for those who aren't football fans. Hot dogs and beverages will be available at half time for a nominal charge. 5

## Koffee Klatch

This monthly morning social event will be **Thursday, November 14**, from 9:00–10:30 a.m. at the Bay Club. Come for a donut and chat with your neighbors. Hosts for this month are Virgie Maimon and Peggy Flentie. 5

## South Bay New Neighbors

Please welcome these new members:

Dorothy and Frosty Foust	Inner Harbor Village
George Miller	Ludlow Point Road
Teresa and Bruce Reddick	Timberton Heights
Sharon and James Walker	Timberton Heights

## SBCA Members Cocktail Party

Due to the Little Theatre production, the Members Cocktail Party date has been changed to **Friday, November 15, 5:00-7:00 p.m.**

## Note Date Change for SBCA Cocktails

The monthly cocktail party for members of the SBCA will be held **Friday, November 15**, from 5:00–7:00 p.m. at the Bay Club. Come make new friends and enjoy the wonderful array of appetizers everyone brings. Our guest artist for the month will be Joy Herring. Joy specializes in watercolors. She is presently doing a series on Port Ludlow, as well as her main topics of flowers and landscapes. This event is for SBCA members and their houseguests only. 5

## South Bay Potluckers

The South Bay Potluckers enjoyed their first dinner of the season on Monday, September 23. There was a great selection of tasty entrées, salads and desserts. Many thanks to the organizers: Nancy and Tink Green as well as Judy and Tom McCay.

Our next event will be on **Monday, November 18**, from 5:00–8:00 p.m. at the Bay Club. Sign up at the desk for a main dish, salad or dessert to serve 10–12 people. Bring your own place settings and beverages. Invite new neighbors to join us. Appetizers, coffee, and tea will be provided. Two more potlucks are scheduled in 2003, so please mark your calendars for **Monday, January 20** and **Monday, March 17**. If you would like to help for either event, please call Cynthia Durham at 437-0591. She will be very pleased! 5

## Beware of Phone Scams

Residents are cautioned about phone calls received from an individual who identifies himself as an AT&T service technician. He claims to be conducting a test on telephone lines and says to complete the test the call recipient should touch nine (9), zero (0), the pound sign (#), and then hang up.

Telephone companies contacted by an alert *Voice* reader said by pushing 90# you give the requesting individual full access to your telephone line, which enables that person to place long distance calls billed to your home phone number. They also said this scam has been originating from local jails/prisons.

Please beware. Do not press 90# for anyone.

# Arts and Entertainment

Beverly Rothenborg, Editor

*This section features news on Port Ludlow arts and entertainment events as well as a performing arts calendar for Jefferson, Clallam and Kitsap Counties.*

*Submit news and calendar items to the editor at [masonr@waypt.com](mailto:masonr@waypt.com) by the 10th of the preceding month.*

## Ludlow Little Theatre Presents...

Port Ludlow will never be the same after Little Theatre's coming production *The Crazy Quilt Club*. Neither will the performers, neither will you!

Picture this: Veronica Blather is a sweet old lady who spends most of her time quilting and solving murders, most of which occur whenever she shows up. Understandably she has a problem finding a place to live. When her niece, Dr. Joyce Lydecker, invites her to stay at a retirement home for old quilters, it seems ideal—until one of its members dies from drinking punch. Or was it poisoned? Who did it? Was it Matilda, the president of the Crazy Quilt Club? Or Clara, who's a compulsive liar? And what about the wisecracking Sarafina who doesn't trust anybody and packs a gun just to be sure?

Clues drop as fast as corpses as Police Lieutenant McCoy shows up, just to muddle the waters more. Add in a black widow spider, a drafty old cave, a gold nugget, and an ominous phone call and light begins to dawn on Veronica. That is, until the storm knocks out all the lights. The action races along at breakneck speed and keeps the audience guessing 'til the last minute in this zany mystery comedy. You'll love it! *Think Murder She Wrote*, think *Dragnet* and *Colombo* with a now-and-then touch of *Golden Girls* and you'll know what fun it will be!

All performances are at the Bay Club. Remember the dates and times: **Friday and Saturday, November 8 and 9**, at 7:30 p.m., and **Sunday, November 10**, at 2:00 p.m. Tickets are on sale now at the Bay Club at \$7.50 each (What a bargain!).

## A Holiday Gift: Classic Pops and Popular Classics

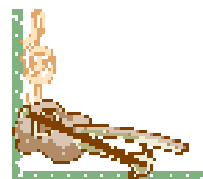
by Barbara Wagner-Jauregg

Enjoy the sounds and scents of the holidays when the Arts Council presents a musical gift at the Bay Club on **Sunday, December 8**, at 2:00 p.m. Dressed up in her holiday finery with the aroma of mulled wine to tease the senses, the Bay Club provides a charming setting for a performance by the Northwoods Wind Quintet.

Northwoods musicians have a reputation for audience-pleasing programs of "Classic Pops and Popular Classics." These versatile musicians maintain a serious commitment to showing audiences, young and old, how much fun classical music can be. All full-time career musicians, they have performed in principal positions with the Seattle Symphony, Northwest Chamber Orchestra, Pacific Northwest Ballet and Seattle Opera, and with the orchestras at the Fifth Avenue and Paramount Theaters.

For their Port Ludlow holiday concert, the Northwoods will present a wide variety of musical styles and composers: Mozart, Haydn, Gershwin, Liadov, Joplin, Cohan and PDQ Bach. Traditional holiday tunes will be interspersed throughout the program with a nod to "The Nutcracker" giving the concert a festive air.

A perfect family event for you, your children and grandchildren—with something for everyone. Tickets are \$15 and are now on sale at the Bay Club.



## Performing Arts Calendar

### November, 2002

#### Friday & Saturday, November 1 & 2, 8 & 9, 15 & 16, 22 & 23

Continuing at Poulsbo's Jewel Box Theatre is their first-ever musical: *Lies and Legends: The Musical Stories of Harry Chapin*, a theatrical collection of incredible stories, 8:00 p.m., 360-779-6946.

#### Saturday, November 2

The Bremerton Symphony Orchestra with guest violinist Andrzej Grabiec presents a program of music by Wagner, Karłowicz, Prokofiev and Ravel at Bremerton High School Performing Arts Center, pre-concert lecture at 6:45 p.m., concert at 7:30 p.m., 360-373-1722, [www.symphonic.org](http://www.symphonic.org).

#### Saturday, November 2

The Port Angeles Symphony Orchestra offers the first concert of their season with guest pianist Walter Prossnitz and music of composers Charbrier, Chopin and Beethoven, Port Angeles High School Auditorium, dress rehearsal, 10:00 a.m., pre-concert chat, 6:45 p.m., concert, 7:30 p.m., 360-457-5579, [www.olympen.com/pasymphony](http://www.olympen.com/pasymphony).

#### Saturday, November 2

*Arrogant Worms* have entertained audiences across America with their fantastic stage presence, brilliant lyrics, rapier wit and tight harmonies, 8:00 p.m., Admiral Theatre, Bremerton, 360-373-6743, [admiraltheatre.org](http://admiraltheatre.org).

#### Friday, Saturday & Sunday, November 8, 9, & 10

Ludlow Little Theatre's 2002 production of *The Crazy Quilt Club*, a comedy/mystery with eight zany old ladies and one befuddled detective, Bay Club at 7:30 p.m. (Friday and Saturday) and 2:30 p.m. (Sunday), 437-2208.

#### Friday, Saturday, & Sunday, November 8, 9, & 10

Bainbridge Performing Arts presents *Peter Pan*, a new adaptation in collaboration with Bainbridge Dance Center but based on the original work by J.M. Barrie, 7:30 p.m., (Friday and Saturday), 3:00 p.m. (Saturday and Sunday), The Playhouse, 206-842-8569, [www.theplayhouse.org](http://www.theplayhouse.org).

#### Thursday, Friday, Saturday & Sunday, November 14 through 23

Bainbridge Performing Arts production of *Peter Pan*, a magical family show (see above).

#### Saturday & Sunday, November 16 & 17

Peninsula Chamber Singers will be performing works by Wagner, Durufle and Schumann at 7:30 p.m., Holy Trinity Lutheran Church, Port Angeles, (Friday) and at 2:00 p.m., Saint Luke's Episcopal Church, Sequim (Saturday), 437-0670.

#### Sunday, November 17

Youth Music Fund Scholarship concert with Diane and Walter Vaux performing music from the Baroque Period, 4:00 p.m., The Upstage, Port Townsend, [innkeeper4u@cablespeed.com](mailto:innkeeper4u@cablespeed.com).

#### Saturday, November 23

This new comedy celebrates love and marriage with the husband and wife acting/writing partnership of Joe Bologna and Renee Taylor. Straight from Broadway comes *If You Ever Leave Me...I'm Going With You!* Dinner 6:30 p.m., show 8:00 p.m., Admiral Theatre, Bremerton, 360-373-6743, [admiraltheatre.org](http://admiraltheatre.org).

#### Saturday, November 30

Here's a fun way to entertain the kids or grandkids! Take them to a performance of the classic *Puss in Boots* by Last Leaf Productions at the Jewel Box Theatre, Poulsbo, 11:00 a.m., 1:00 p.m. and 3:00 p.m., 360-779-6946.

#### Saturday, November 30

Seattle International Comedy Competition is the finals of a month-long event paring down hundreds of contestants who auditioned to the Final Five performing at the Admiral Theatre, Bremerton, 8:00 p.m., 360-373-6743, [admiraltheatre.org](http://admiraltheatre.org). This show may contain material that may be offensive to some audience members.

## First Wednesday Luncheon

The First Wednesday Luncheon will be held **Wednesday, November 6**, at the Beach Club. Port Ludlow residents and guests are invited to come for a social time at 11:00 a.m. A light lunch will be served at 11:30 a.m. with a program following at noon.

There will be a new twist to our November luncheon. You may all participate in part of the program actively or passively by baking and exchanging cookies or watching the exchange before lunch is served. You may bring as many cookies as you like; however, please put only six cookies in each bag, and you will take home as many cookies as you bring. If you would like to share your recipe, please bring it with you.

**Monday, November 11**, is Veterans Day and it is an important time to remember American values. Freedom is not free and it requires constant vigilance and sacrifice. Liz Moss, a Port Ludlow resident, was a nurse on a United States Navy hospital ship that went to Nagasaki after the bomb was dropped in 1945. She was dedicated to serving our country and will share some of her personal experiences at our lunch on **Wednesday, November 6**.

The purpose of our lunch each month is to provide support for the Jefferson County Food Bank so please bring a non-perishable food or a monetary donation. In addition, part of our contributions will be shared with the Quilters Christmas Basket Fund.



# Port Ludlow Associates

## Resort Owner/Developer Report

By Greg McCarry

### Club Update

In August a Port Ludlow resident filed a complaint with the State of Washington Department of Financial Institutions alleging that PLA's Club at Ludlow Bay membership program is a violation of state securities regulations. On September 19, I received a letter from the State seeking PLA's response to the complaint. The response was due October 10 and has been made as requested.

As I have mentioned, PLA is vitally interested in getting a resolution to the securities question sooner than later. As of this writing PLA has not heard what determination the State will make. Based on the unresolved status of the question, PLA has suspended solicitations for the Club until a determination is made or some other solution is proposed.

### Development Update

The Marina expansion portion of the Environmental Impact Review has been completed and the public comment period is now closed. As a next step to the Resort planning effort, PLA will begin a review of upland development concepts with residents of Ludlow Bay Village, the PLVC and Jefferson County. Our objective is to complete the review process before 2003. The public comment period for the environmental review process of the Golf Clubhouse expansion has also been closed and PLA has received a favorable determination.

Olympic Terrace (41 lots), located west of Teal Lake Road, is nearing completion. ATB paving has been put in place and power/phone/TV cable lines are being installed. PLA has received preliminary plans for four new home models. Construction of new models is expected to begin by January 2003.

PLA currently has 15 new homes under construction and has applied for building permits to start 10 more in various subdivisions. The current construction and permit applications, when complete, will finish all home construction in the Teal Lake Village and Woodridge subdivisions.

### Resort Update

As reported in the October issue of the *Voice*, there has

been a management change at the Resort. In addition, other new management changes have been made.

Welcome to our new Front Office and Revenue Manager, David Tufts. He comes to us with extensive experience in front office, reservations and revenue management. He has worked in the capacity of Assistant General Manager with Best Western and Holiday Inns. Most recently, David was Revenue/Reservations Manager for Holiday Inn at Sea-Tac.

Welcome also to Mian Haq who has accepted a position as Hospitality Accounting Manager. He will be responsible for daily financial reporting, group accounts receivable, financials, and daily involvement with the hospitality team. He brings a good knowledge of the hospitality industry, having worked at Red Lion Hotels and the Sleeping Lady Hotel in Leavenworth, Washington.

Stacey Hayter has joined PLA as Conference Services Planner. She has over 10 years of experience in catering and event planning and holds a Culinary Arts degree as well as a degree in Business Communications. Stacey will be responsible for coordinating group events and activities at the Resort.

In case you have not heard, Kori Ward has been named Marina Manager. Kori is a familiar face to Port Ludlow boaters. She will be formally responsible for Marina operations, reporting to Tom Griffin, PLA's Chief Financial Officer. Tom will also be responsible for the Golf Course.

To clear up any confusion over the Resort operation, Benchmark Management formerly was responsible for the rooms, Golf Course and Marina in the role of contract manager. Benchmark Management reported to Greg McCarry, President of PLA. With the management changes, Rebecca Ammeter, Acting General Manager, and Tom Griffin report to Greg. The management changes only affect the reporting structure. The Resort will continue to operate as before with rooms, Golf and Marina as one business entity. During the next few months PLA is evaluating what role Benchmark may have at the

# Mariners' News

## Dock Talk

by Kori Ward, Marina Manager

### Dock Renovations



I am pleased to announce that Loral Construction has completed its 2002 Marina maintenance contract. The T-head and L-head of C dock were completely re-built with new whaler boards, through rods, triangle frames and cleats. The marginal walkway at C dock and the landing float at B ramp also got completely renovated. Patching of the concrete floats also took place. We raised the south end of A dock three inches by installing supplemental floatation under the docks. Forty-two rusty pile hoops were removed and replaced. A whaler board survey was completed, and the wooden triangle filler slabs on A dock were removed and replaced with concrete filler slabs.

Following our ten-year plan, we are looking forward to many more dock improvements in the future. If you have any suggestions or comments on past or future renovations, please feel free to come by the Marina office and talk with me.

### Holiday on the Docks

The holidays are sneaking up on us quickly! Holiday on the Docks is scheduled for **Saturday, December 21**. A sign-up sheet will be available at the Marina office as of the first of December. Start dreaming up some decorating ideas; remember the best-decorated boat receives one free month moorage!

### Propane Cylinders

Remember, it is unlawful to fill propane tanks that are not equipped with an Overfill Protection Valve. Be sure to check your tanks for compliance. If you have any questions on whether your tank is up to date, drop it by the Marina store and our staff will be glad to check your tank.

May all your crossings be smooth!

*Kori*

## Port Ludlow Paddlers

by John Reseck

The Port Ludlow Paddlers made their annual trip to Barkley Sound on Vancouver Island in September for a week of good food, good paddling, good friends, and good (very good) weather.

The Broken Islands in Barkley Sound are a very special place. We stayed at Sechart Lodge and day-paddled from the Lodge. There are so many different trips that you can't possibly do them all in one week. Whether it's just a couple of miles to the beautiful Pinkerton Islands, where a bear was observed swimming between the islands, or taking a water taxi to the outer islands and paddling 14 miles back to the Lodge, these trips and a dozen in between were enjoyed by various members of our group of 29 people. Paddling in small groups, they explored just about everywhere. One of our newer paddlers, Mike Larkin, enjoyed the experience of capsizing his boat. Mike and Kathy Larkin, having just taken the self-rescue class the week before the trip, were paddling together and Mike tipped over and was able to pop right back into the boat. Their comment was, "It really works, no problem at all."

If you want to get in on the fun contact Sharon Reseck at 437-0351 or e-mail [reseck@cablespeed.com](mailto:reseck@cablespeed.com) to get on our e-mail list for more information. Remember, people who don't paddle end up with "dry paddles," a bad condition.

## Radios "How to" Boating Topic

The Coast Guard Auxiliary's "How to" boating classes continue on **Wednesday, November 6**, 7:00–9:00 p.m. at the Bay Club. "How to Use Your Radio" will cover radios used on boats, functions of radios, licenses, selecting a VHF-FM radio, operating the radio, maintaining a radio watch, special purpose channels, and some "no-nos" of radio procedures. The cost for each class is \$7. To register call David Aho at 437-9888.

## Marina Tenants Consider the Future

by John Franznick

With uncertainty still prevailing at the Port Ludlow Marina, a randomly-selected seven boaters were interviewed to get a feel for their future intentions regarding moorage. Of the seven, four of the boaters were members of the Port Ludlow Yacht Club (PLYC). Everyone interviewed acknowledged uneasiness with:

- The 30-day cancellation policy—either party can cancel with a 30-day notice.
- Absence of a fee schedule for 2003.
- Lack of other moorage in the near vicinity.
- Rates and privileges for “Club” members perhaps being better than those for old time “non-Club” members.
- Fees that are already higher in Port Ludlow.

Two of the interviewed boaters said they were considering selling their boats if the policies outlined in the “Club” package become reality. Four indicated they wouldn’t pay moorage for the entire year of 2003 even if there was a discount for annual leases. Six of the seven interviewed had contacted other marinas to check availability and rates.

It should be noted that the 2002 moorage rates increased 10 percent over 2001. The amount of increase for 2003 is

## Coast Guard Auxiliary

by John Reseck

With the boating season over, the members of the Auxiliary are all checking on their various qualifications to make sure they did everything required to maintain their status. There are workshops, required hours and maintenance exercises for each of the many qualifications. The members work hard not only to do their jobs but to keep qualified to do them well.

Come **Monday, December 16**, we will have our Change of Watch Banquet to turn over the oars to our new elected officers.

A Coastal Navigation class is scheduled for the spring. Basic Navigation is set for March, Advanced Navigation in April, and Charting in May. Taking all three parts will give you a strong navigation background; however, each part can be taken separately. Call David Aho for more information on any class at 437-9888. Don’t forget the “How to” Boating classes the first Wednesday of each month. See our website at: [www.uscgaux.org/~1300401](http://www.uscgaux.org/~1300401).

## Etchells Season Finale

by Frank Mitchell



Finally, after three 16-race Series, plus a midsummer 6-race Regatta, the Port Ludlow Etchells Fleet concluded their 2002 racing season on Thursday, October 10, under blue sunny skies with a brisk fall breeze. Sailing just doesn’t get any better than this!

After a strenuous beat out to N2 and a beam reach back around the Inner Harbor mark, the first race was won by *Bananas* (Dave Harris/Frank Mitchell) with *Finnegan’s Wake* (John and Diane Golden) a close second and *Wow* (Horst Frychel) third. The second race featured a double circuit, a beat out to N2, back around the Inner Harbor mark, and then another beat to the midway mark and a final beam reach to the finish line. First over the finish line was *Zoom* (Dick Duoos) with *Bananas* second and *Zest* (Gary Dotson) third. When all the points were added up the Fall Series winner was *Finnegan’s Wake* by one point over *Bananas* with *Onyx* (Terry Barnes/Charles Beauchamp) taking third place. The 2002 Annual Championship, awarded to the boat having the lowest points aggregate over all three Series, went to *Bananas*, 85 points, with *Finnegan’s Wake* second, 89 points, and *Zoom* (Dick Duoos) third with 98 points. Congratulations to all Etchells sailors. They’re all winners!

This year has been noteworthy for having eight boats competing, plus much closer race competition. Six boats won at least one race in the Fall Series. Skill levels in both sail trimming and boat handling have increased considerably resulting in more crowded starts and close finishes, not to mention tense “crossing” situations during races. We really need a powerboat sailor to form an on-the-water Race Committee. Any volunteers?

So now it’s over and we can say “Thanks for the memories of 2002!” Let our nerves simmer down from the heat of battle, and our aging bodies (not you Fred, you’re not old!) recover from the aches of hauling on jib sheets and spinnaker halyards. Let’s raise a festive glass in a toast to good friends and great sailors!

# Tide Timber Trail

## PROspectives

*by Dave Ramsay*

The cool and wet season is quickly approaching, and we are regularly seeing more and more golfers in sweaters, jackets, and even the occasional pair of rain pants. We can all agree that we were blessed with an outstanding summer and early fall this year. However, seasons change and all good things must end.

Planning ahead as always, the golf maintenance crew has been working diligently to get the course in excellent fall and winter condition. Over the last eight weeks they have aerated the greens and tees, and laid down some very healthy top-dressing applications. Although these practices may be somewhat of an annoyance to golfers for a few days, performing these tasks sets the stage for course conditions to be excellent for the next half year. The maintenance staff is also securing premium rubber matting for our wood steps and curbing which will eliminate slippage when these surfaces become wet. They started this conversion a few weeks ago, and will continue working on it over the next couple months. One last winter project will be some tree thinning work at various points on the course to improve visibility, playability, and to facilitate sunlight and airflow for healthier turf growth.

Believe it or not, some of the best golf of the year in Port Ludlow is in November. That may not make sense to those that like their temperature in the 70s, but our greens are normally in excellent condition and the fairways are getting firmer and firmer every year. As long as we aren't having horizontal rain gusting through our neck of the woods, it's a great month to play.

Speaking of great November golf, we'll be having the Wednesday morning Pro's Pick tournament every week, starting **Wednesday, November 6**. It's open to all golfers—man or woman, member or non-member—just sign up during the week, show up on time, and put in your five bucks. We'll do all the work, you can do all the play (and maybe win a little spending money while you're at it).

One final note: Yes, the Christmas Balloon Sale will be back this year! Mark your calendars for **Tuesday, December 3**. Discounts are going to be better than ever for this

## Women's Golf Association

*by Sally Grything*

The winners of the 2002 All-Star Cup were the Northern Lights, made up of Barbara Adams, Grace Allen, Shirley Cirtaut, Val Durling, Mea Graham, Sally Grything, Cathie Hampton and Diane Kobz. For the second year in a row they beat the Shooting Stars whose members were Caryl Oros, Shirley Purcell, Burleigh Smith, Nan Smith, Lucinda Thompson, Diane Watson and Susan Wright. Following the competition a party was held at Lucinda Thompson's house that celebrated not only the All-Star event but also a hole-in-one made by Lucinda earlier in the year on the 6th hole of Tide.

The last Couples Tournament of the year was held on October 6 and had the biggest turnout of the year. First place winner in the 4-person scramble was the team of Garry and Burleigh Smith and Jim and Nancy Shamadan. Second place went to Jack and Grace Allen and Darrell and Sally Grything. Third place was Marilyn and Bob Townsend and George and Joanne Harrington. Fourth place went to Evie and Bob Lee and Jane and Ed Bakke and finally Fifth place went to Allan and Sandy MacDonald who prevailed even though they were only a 2-person team.

Though the end of the season is drawing near, there are still games to be played. Look in the ladies locker room for the casual play sign-up sheets and keep those skills

## Men's Golf Association

*by Ray Carlson*

The Port Ludlow Men's Golf Association (PLMGA) dinner and awards presentation was held on October 16 at the Bay Club. All President Cup and Club Championship winners, including the yearlong Eclectic, were presented their awards. Steve Failla received an award for the most improved



golfer. Michael Graham was presented the Len Hunton award for his outstanding contributions to our Men's Club.

The Port Ludlow Cup held on September 28 was won by the Port team who swept the four-ball foursomes and individual match play events. Awards were presented to both Port and Starboard teams. Congratulations to all who earned awards in Men's Club events.

Special thanks to the Board of Directors who have been very helpful and supportive in what has become a very trying year. Special thanks to Jerry Conover for his time and effort for planning and scoring our weekly tournaments.

Starting in November, Wednesday's play will be Pro's

## Decorating for the Holidays

by Cynthia Landis, Dana Pointe Interiors

Dana Pointe Interiors is offering a free workshop on decorating for the holidays on **Wednesday, November 20**, at 3:00 p.m. It will be held at their shop in the Village Center.

As the days grow shorter and the light retreats, it reminds us that the holiday season is not far away. Here are some ideas to spruce up your home.

Spend an afternoon foraging the boundaries of your own backyard for brilliant berries, vines and leaves. Greenery, fruits and vegetables inspire decoration for your home and holiday table. They work well in wreaths, bouquets and centerpieces. Holiday lights intertwined in wreaths, grapevines over your door welcome friends in the darkening days. Roll them up into balls and stack with glass balls for that special touch. Luminaries bordering your drive or entranceway bring light in a much-needed time.

Dress up your home with fabrics. Pottery Barn has yummy velvet side-tie slipcovers for your dining room chairs. Colors of currant red and fir green create a touch of warmth and richness. Accent a room with pillows, table runners, and tablecloths. Use all white pillows in satins, velvets with beading to create a snowflake forest. Red and gold pillows with beads, tassels and fringe can make your room rich and festive. Make them yourself or hunt the catalogs for fun and great selections.

Join us on **Wednesday, November 20**, for more ideas. For reservations, call 437-2060.

## CLASSIFIEDS

**Errands Unlimited.** Do you wish someone would: feed your pet or water plants while you are out of town, serve at your party, pick up your dry cleaning, organize your mess, or whatever you don't have time for or don't care to do? Licensed, bonded and insured; 4 years serving Port Ludlow; 12-year resident. Call 360-437-9564.

**Weber's Window Service.** Here to help with your window "pains." A fast, courteous window cleaning service. Local references. Free estimates. Ron Weber, 437-1131, [weberswindows@wwdb.org](mailto:weberswindows@wwdb.org).

**Jim Posey Insurance Services**, providing solutions for your insurance needs: Medical, Long-Term Care, Annuities, Medicare Supplements and Life. For personalized service, call Jim at 379-2493.

**House sitting**, pet sitting, plant sitting. 360-509-6307.

**Decks and Remodel.** 15 years in building trade. Reasonable rates. Call Al Anderson at 437-9220.

**Marine Supplies and Repair in Port Ludlow.** Gabriel Marine LLC has marine components from radar to bottom paint, and everything in between. We install what we sell, with competitive prices, and free delivery to your vessel. Repair services include tune-ups, oil changes, electrical troubleshooting, welding and machining. Insured and bonded. Burton Gabriel, proprietor, 437-2136. Since 1979.

**A Plus One. A General Contractor.** Specializing in home renovations, kitchen and bath remodels. Also new decks and room additions. Licensed, bonded, and insured. Call your neighbor, Harry Lee at 437-0218, e-mail [aplusone@olympus.net](mailto:aplusone@olympus.net).

**No Job Too Small.** Home repairs and remodeling, carpentry, tile work, wallpapering, sheetrocking, light plumbing, etc. Local references; free estimates. Call Walter Davies-Owens, 437-9820.

**Fee Only Financial Advisory Services.** Local Certified Financial Planner offers Financial Planning Services on a fee-only basis. Specializing in Estate Planning, Retirement Planning and Tax Efficient Portfolio Management. Northwest Financial is a registered investment advisor. There is no charge for the initial consultation. Contact Ron Arends, CFP, at 437-0387 for additional details or free brochure.

**House Cleaning by Robin.** \$15 per hour, 2 hour minimum. Licensed and Insured. 732-4676.

**Fall Arts and Crafts Sale.** November 9 and 10 at the Port Townsend Community Center, Lawrence and Tyler Streets, Uptown. Hours are 10-5 both days. Woven rugs, pottery, knives, jewelry, wooden bowls, ironwork, clothing and more! All handmade by local artisans. Portion of all sales to benefit the Food Bank.

**Housecleaning. Snowbirds**—leave a clean house behind! \$15 per hour, 4 hour minimum. Pet Sitting. Housecleaner at Olympic Music Festival since 1997. References. Schedule an appointment now. 437-9511.

**At S.T.A.R.T.** weekly meetings, Bill and Geri Fowler point out that "you are what you ate" and eating living foods can improve your health by watching what you eat. Learn of damaging effects of our standard American diet and how to take control of your health. Every Wednesday 10 a.m. to noon, 175 Seaway Place. RSVP 437-5143 or [bfowler@srherbs.com](mailto:bfowler@srherbs.com).

**RainFest 2002.** Jefferson Land Trust's annual auction and party is Saturday, November 9, in the Erickson Building at the Jefferson County Fairgrounds starting at 6:30 p.m. Support your local land trust and have a great time! Non-members pay \$10 and members who have not pre-registered pay \$5 at the door. For information call 360-379-9501. Members pre-register at [www.saveland.org](http://www.saveland.org).

**Nursing Home in Your Future?** Free report by Seattle attorney



reveals nine important questions you should ask before you or a loved one goes into a nursing home. Call toll-free 1-888-737-8513 for your free copy! Charles Veigel, Attorney.

**Organizing**—Do you need help organizing? Let me help you organize the household. I organize home-based businesses, rooms, cabinets, pantries, closets, basements, garages, etc. \$15/hr. N. Dickinson 344-3878.

**Seeking Dynamic Sales Professional** with excellent phone skills to work in growing company. Salary and bonus program. Part-time available. Flexible hours. Please fax your resume and cover letter to 800-716-9959 or call 437-1344.

**For Rent Two Bedroom Furnished Cottage** at Ludlow Bay, sleeps four, great for visitors or while looking for that permanent home; great Port Ludlow location. No smoking, no pets. 437-8097.

**Shirlee Callahan**—Previously at Village Salon has relocated to Chameleon Salon, 11372 Rhody Drive, 385-5685.

**Dana Point Interiors Holiday Sale.** Now until December 24. 10 percent off custom orders (labor not included). 30 percent off in-store accessories. Bring this ad in to ensure your discount.

**Dry Firewood.** Full cord \$160, half cord \$90, with free kindling. Split and delivered locally. Bob, 437-0761.

**Excellent, Conscientious Carpet and Upholstery Cleaning** by Phil with his state-of-the-art machine. Local individual at reasonable prices, 531-3222 or 437-0994.

**Landscaping.** Pruning, fertilizing, creating low-maintenance landscapes. Troubleshooting problem yards, all phases of landscaping, 20+ years exp. Help with most residential needs including hauling, cleaning, chaos and general odd jobs, labor. If you can't figure it out, then give me a call. Port Ludlow resident, local ref. 379-6146.

**Skin Care: Pulse Light/Photo Rejuvenation Facial.** Seen this newest treatment on TV? Reduces signs of aging. Relieves symptoms of rosacea. Restores skin's natural cellular activity. Non-invasive. I have the machine! Great savings only until Nov. 29. My Special rate of \$75 per session (reg. \$100) in series of 5-8. Call me soon. Teresa, aesthetician, at Ludlow Bay Wellness Center. 437-3798.

**Rehearsal for Life.** Join a 3- to 6-month group beginning in November that focuses on supporting changes you wish to make in your life: reducing stress, improving relationships, gaining spontaneity/creativity, improving self-esteem, overcoming anxiety or depression, or navigating a life transition. Esther Conway, Ph.D., Licensed Psychologist, 301-4564.

**Fall Colors Hood Canal Cruise!** The Hood Canal is magnificent in the clear fall air. The Olympics and surrounding shores are best viewed from the water in this 50-mile-long fjord. Special fall prices for all-day cruise – \$100 per person, min. of 4. Bring your favorite wine and luncheon delights aboard and cruise in comfort aboard our fully-enclosed yacht. Call Captain Phil, 437-0105, [www.pcocharters.com](http://www.pcocharters.com).

**Computer Tutor.** Are you lost in a confusing chaos of files, folders, icons, and shortcuts? Do backups and virus checkers have you stumped? Do you simply do what your computer orders, instead of ordering it to do it your way? Small businesses, home users, let me help you get the upper hand. Ellen, 437-9922.

**Maui Condo.** Just feet from the Pacific enjoy a swim, Jacuzzi, or relaxing on your private lanai while watching the sunsets (and whales, Dec.-Apr.). Fully-equipped condo, including washer and dryer in unit. Condo accommodates a couple nicely. Contact the Perrys at 437-1355 or [taperry@olypen.com](mailto:taperry@olypen.com).

**Home Improvements.** Gutters, house and property cleaning; lawn mowing; weeding, trimming; brush removal; recycling; house sitting; odds and ends. Call Linc 379-4841.

**Another Shold Construction.** "Built with Quality." General Contractor. Remodel, decks, siding, fencing, etc. No job too small. Licensed, bonded and insured. Todd Shold, 360-377-3381 or 360-620-5035.

**Personalized Marketing Packages** for professionals and small businesses. Grow your business with a custom marketing and promotion plan that reflects the unique qualities of you and your business. Call Kathy Wilson Anderson at 437-1022 or visit the website [www.under-one-roof.net](http://www.under-one-roof.net).

**Sewing In Home.** Alterations, hemming, custom pillows, tote bags, repair work, special projects. Janice, 385-3929.

**Yard Ranger.** Weed eating, garage cleaning, odd jobs. Have pickup, 8 years' experience in landscaping. References. Call Erik 360-385-2064.

**E-marketing Solutions** for professionals and small businesses. Custom website design and redesign, search engine optimization for websites, website marketing and promotion, and e-zine production. Call Kathy Wilson Anderson at 437-1022 or visit the website [www.under-one-roof.net](http://www.under-one-roof.net).

**RV Storage.** South Bay, 1 mi. west of Hood Canal Bridge on Hwy. 104. No electrical hookups. Call Shirley, 437-9298 (evenings best time to call).

**Need a Baby Gift?** Baby Bathrobes with name or initials, or a soft Baby Blankie. Will deliver to Port Ludlow area, no shipping charge. Connie Baumberger 385-0763. E-mail [conni@tscnet.com](mailto:conni@tscnet.com). Visit my website [www.c-ccreations.com](http://www.c-ccreations.com).

**Captain Bry's Port Ludlow Charters** is here for you! Let us provide you with truly memorable sailing experiences and nature tours on our spectacular Bay. Make plans to join us for our Continental Breakfast Tours on Saturdays and Sundays, 9:00 a.m. and 11:00 a.m. Make your reservations by calling 821-9056 or 437-0602.

**Dreams in Action:** There are a few more openings in this personal growth group which uses action and Jungian concepts to gain meaning from dream images. This process can assist you in making use of dream messages in guiding your life. Space is limited. Call Esther Conway, Ph.D. 301-4564.

**Field Day Cleaning.** Residential, Commercial and New Construction. Non-toxic chemicals and environmentally sound practices used. Recycling services included. Free estimates. Phone 437-2948 or e-mail [matam@tscnet.com](mailto:matam@tscnet.com).

**Dog Boarding** (small and large) in private home of animal pro. Your pet's typical day recreated to minimize stress. No one left home alone. Call now to reserve your holiday. Jan Hollingsworth at 360-385-0903.

**Elect Mike Brasfield Jefferson County Sheriff (D).** The one candidate with the professional experience, training and education to address issues critically important to all of the residents of Jefferson County. Vote for a commitment to excellence, the highest ethical standards and outstanding experience. [www.jeffersonsheriff.org](http://www.jeffersonsheriff.org) 437-0831.

**Need More Room?** New storage units at Beaver Valley Storage adjoining Chevron station at Chimacum Corner and Beaver Valley Road. Secure, insulated and affordable. 301-2642 or 732-0400.

**Mental Health Counseling.** I am a certified mental health counselor with experience in depression and anxiety, as well as couples' conflicts. I have been trained in hypnotherapy. I have opened an office at the Port Ludlow Wellness Center. A. J. Mullen, 360-643-1364.

**Make Meaningful Change in Your Life.** Esther Conway, Ph.D., Licensed Psychologist. Specializing in relationship issues for individuals, couples, families and children. Groups are also available. 209C Shold Business Park, Port Hadlock. 301-4564.

**Taxes and Accounting**—We specialize in tax preparation and the needs of small business. We offer QuickBooks consulting and make house calls. Call us at 437-1392. Great service and fair prices. Duane E. Anderson, CPA.

**Work-out partner wanted.** I need someone to work out with so that lifting weights, Tae Bo, and energetic walking will be more fun. Call Kathy at 437-1022 and let's talk about getting in shape!

## Richard C. Tizzano ~ Attorney at Law



RICHARD C. TIZZANO  
ATTORNEY AT LAW

### ESTATE PLANNING

ELDER LAW • MEDICAID • GUARDIANSHIPS

- Revocable Living Trusts
- Simple & Complex Wills
- Probate
- Durable Powers of Attorney
- Community Property Agreements
- Healthcare Directives
- Will Contests

— Creating Peace of Mind —

360-697-7132

POULSBRO

email: myattorney@hotmail.com

## FADE PROTECTION

Our Window Film Protects Your  
Furniture, Floors, Fabric & Art.  
Lifetime Warranty



**WINDOW SCAPES, INC.**

**360-385-3810**

cons #window 99118

The Clear Alternative to Drapes or Window Replacement

## Have You Thought About Your Will Lately?

From the birth of a child to a struggle with illness, numerous life events cause us to consider the impact our own mortality will have on loved ones. In response, many people turn to writing a will as a way of ensuring assets ultimately pass to their heirs.

**Is a will enough** to protect what's most important to you?

Please join us as our panel of experts explore this and other common estate planning issues, including:

- Trusts vs. wills: Is one better for you?
- Protecting loved ones if you become ill
- Deciding when and how your assets are distributed
- Paying estate taxes, the mortgage and other bills

This one hour program is free, but seating is limited. To reserve your seat or for more information, please call or stop by today. If you are unable to attend, please contact our office for other viewing options.

Thursday, November 7, 2002

Time: 3:30 p.m.



Larry Wiener  
9526 Oak Bay Road, Ste. 300  
Port Ludlow, WA 98365  
(360) 437-5113  
www.edwardjones.com

Member SBA

**Edward Jones**

Securities • Investments • Financial Planning



**PROVIDING:** Respite  
Dementia Care  
Hospice  
Personal Care  
Rehab  
Errands  
Housekeeping

RN Assessment and Supervision

2-to-24 hours with Qualified Caregivers

CNA, RNA, Homemaker Companions,  
Live-In, Case Management

**Care Solutions, Inc.**

... for quality caregivers

3571 NW Byron St., #102

Silverdale, WA 98383

360.307.8438

## Pleasant Harbor Marina



Protected  
Year-round  
Moorage

- 285 slip marina with grocery & fuel
- 2 Heated pools & year-round spas
- Long-term fixed rates for permanent moorage
- Slips 25 - 70 feet and end ties to 150 feet
- Laundry, shower and washroom facilities
- Located 40 minutes from Port Ludlow



800-547-3479

[www.pleasantharbormarina.com](http://www.pleasantharbormarina.com)  
308913 Highway 101 • Brinnon, WA

## Penny Creek Quarry

Family owned since 1995.

Full line of crushed rock products  
Plus bulkhead rock and landscape products.

We gladly give free estimates.

Come and see our selection and  
Pick the rock that's right for you!



450 Penny Creek Road  
Quilcene WA 98376  
360.765.3413

## LANGUAGE SERVICES

SPANISH CLASSES  
TRANSLATIONS  
INTERPRETING SERVICES  
TUTORING

HELENA PAN ETYKO SN ELG ROYE  
280 Quincy Street, Suite C, Port Townsend  
(360) 344-4160

[languages@olympus.net](mailto:languages@olympus.net)

[www.languageservices.biz](http://www.languageservices.biz)

## Windermere PORT LUDLOW

Consider the following before you buy or sell:

- Locally owned, strong community involvement;
- Dedicated to representation of our clients, with no conflicts/hidden agendas;
- Experienced staff, six with broker's licenses;
- Access to two MLSs, print and Internet advertising;
- Aftersale service—"MOVING LINK," a Windermere exclusive free service that saves time and money, and reduces moving stress.

### Experience The Difference

Windermere Real Estate/Port Ludlow

(360) 437-1011 • 1-800-848-6650

[www.windermereportludlow.com](http://www.windermereportludlow.com)

e-mail: [plvoice@windermereportludlow.com](mailto:plvoice@windermereportludlow.com)




One of the real joys  
of the holiday season  
is the opportunity to say  
"Thank You"  
and to wish you a  
Happy Thanksgiving!

360-437-2278

**COLDWELL  
BANKER**

FORREST ALDRICH, INC.

Visit our website  
[www.cbolympic.com](http://www.cbolympic.com)



**DOUBLE D**  
**ELECTRICAL, Inc.**  
comm./residential/indust.  
Large & Small Projects  
Dependability

**Jason Woods**  
Owner  
Phone  
**(360) 437-9857**  
**385-1130**  
Fax  
**(360) 437-7881**

6650 Oak Bay Road  
Port Ludlow, WA 98365  
License #DOUBLED027PL

**ZINGHEIM CONSTRUCTION**  
State License #2290 HC 08283

New Construction • Kitchen or Bath Remodel  
Tile • Hardwood Floors • Cabinetry  
Decks • Repairs • Fencing  
Numerous Port Ludlow References

437-2754

**ON TIME . . . ON SCHEDULE . . . ON ESTIMATE!**

**Join us in Loving God and Living Boldly!**


The First Presbyterian Church of Port Townsend  
1111 Franklin Street  
invites you to services

Sunday mornings at 8:30 am and 11:00 am  
in our beautiful and historic sanctuary.  
Education for All Ages at 9:45 am

Call the Homebase at 437-2785 or  
the church office at 385-2525 for further information.  
Visit [www.fpcpt.org](http://www.fpcpt.org) for sermons and information about the church.

**Port Ludlow  
Community Church**

9534 Oak Bay Road  
360-437-0145  
E-mail [plcc@olympus.net](mailto:plcc@olympus.net)



**Pastor Paul Taylor**

"A mix of contemporary Worship and Praise with Traditional Hymns"

Adult Sunday School class — 9 a.m.  
Sunday Worship Service — 10 a.m.  
Wednesday Evening Service — 7 p.m.

"Come into His presence with thanksgiving in your heart"


**The Lutheran Church of the Redeemer**  
*A Safe and Exuberant Church*

Pastor Don Pieper

Sunday Morning Worship 8:00 a.m. & 10:30 a.m.  
Sunday School, Youth & Adult Bible Study 9:15 a.m.  
(Nursery Care Provided)

**360 385-6977**

P.O. Box 70 / 45 Redeemer Way, Chimacum WA 98325  
Between Hadlock & Chimacum on Chimacum Rd.



FARMERS

HOME — AUTO — LIFE — BOAT — BUSINESS  
ANNUITIES — LONG-TERM CARE

**Juliana Stevely**  
FARMERS INSURANCE GROUP  
210 Polk St., #4A  
Port Townsend, WA 98368

**360-344-3388 or 206-406-0730 Fax: 360-379-1428**



**Homer Smith Insurance, Inc.**  
Estab. 1950

804 Water Street  
Port Townsend, WA 98368  
360-385-3711 1-800-464-4140

**Auto • Home • Health**  
**Medicare Supplements • Life**



**Homer Smith III**  
*President*

email: [homer@homer-smith.com](mailto:homer@homer-smith.com) [www.homer-smith.com](http://www.homer-smith.com)

Helping Hands

Home Care



- Elder Care
- Housecleaning
- Meal Prep
- Transportation to Shopping & Doctor Appointments
- From 2-hours to 24-hour Live-In Care
- Licensed/bonded Home Care Agency; Personnel are carefully screened.

- Medication Reminders
- Personal Care
- End of Life Care

- Bathing
- Laundry
- Respite

Locally owned — Member of the Port Ludlow Chamber of Commerce

**360-379-2632 or Toll free 1-888-406-1455**



**Barb's Pet Care**

DOG WALKING — PET SITTING — PET BATHING

BARBARA HANSEN  
385-9644  
barbspetcare@netscape.net

Member of Pet Sitters International, 1-800-265-8178 (NARS)  
http://www.pet-sit.com • Bonded through Travelers Insurance

**Elect Mike Brasfield**

Jefferson County Sheriff

Commitment to Excellence  
Highest Ethical Standards  
Outstanding Experience

Paid for by Committee to Elect Mike Brasfield (D)  
(360) 437-0831 [www.jeffersonsheriff.org](http://www.jeffersonsheriff.org)

**Once Upon a Time**

• Antiques • Whimsical Decor  
• Magical Bouquets • Unique Apparel  
• Garden Style Living • Specialty Gifts

360-437-1133  
70 Village Way, Port Ludlow, WA 98365

Penny Garrison, Proprietor

**Errands Unlimited**

Call Penny Garrison  
360-437-9564

**It takes just a few minutes to list a home — but total commitment to sell it.**

Our commitment to you begins with the listing agreement, and only ends with a successful closing.

**Real commitment takes resources —**  
Who else can offer you this?

- Our marketing and advertising budget is the largest in the area. Support from PLA means we can spend what it takes to get your buyer to Port Ludlow.
- Lifestyle sells! We use our exclusive discounts at The Resort at Ludlow Bay to introduce potential buyers to the Port Ludlow resort lifestyle.
- Office open 7 days a week with a support staff and 2-3 agents (always!).
- Designer brochure placed in 160+ rooms at The Resort at Ludlow Bay, highlighting new and resale homes.

800.872.1323  
360.437.9434  
[www.ludlowhomes.com](http://www.ludlowhomes.com)  
40 Teal Lake Rd.  
Port Ludlow, WA 98365

**John L. Scott REAL ESTATE**

Independently owned and operated.  
John L. Scott Real Estate John L. Scott, PLS

**Hear For Life**  
AUDIOLOGY, LLC

"When experience makes the difference."  
Programmable, Conventional Hearing Devices  
Complete Hearing Evaluations  
Hearing Device Repairs & Batteries  
All Makes & Models

Call For A Hearing Consultation: 360-437-7767  
115 Village Way  
Port Ludlow, WA

Marilyn Cory-Shaw, M.S.  
Certified Audiologist, CCCC  
Professional Hearing Care

**Door of Grace Ministries**  
*Loving Jesus and Loving Each Other*

Invites you to  
Services Sunday mornings  
at 10:00 a.m.  
Bayview Room at the Beach Club

Pastor Kevin Hunter, Th.D.  
181 Condon Lane  
Port Ludlow, WA 98365  
(360) 437-7710  
[www.doorgofgrace.org](http://www.doorgofgrace.org)





### The "I Can't Decide" 5 Year CD For those who expect the unexpected.

If you're having trouble deciding where to put your money, we have the answer. Our new 5 Year CD earns you a great return rate, with the flexibility to withdraw or add to your CD during the 5 year term.

So you're free to change your mind if something comes up.

The minimum amount to open your CD is \$250, and it's open to

everyone, whether you're an American Marine Bank customer or not.

Come into any of our 5 offices of American Marine Bank, or our Silverdale Bank office, and get started on your 5 Year certificate of deposit soon.

Because not deciding, is a decision too.

**360.437.8805**

[www.americanmarinebank.com](http://www.americanmarinebank.com)



A penalty for early withdrawal may be imposed.



Rainbridge Island • Poulsbo • Port Ludlow • Seattle • Silverdale Bank



### Serving pizzas, pastas, sandwiches and salads.

We Deliver **EVERYTHING** on our menu!

(Delivery to Oak Bay, Hadlock, Chimacum Road, Beaver Valley Road, Swansonville, Teal Lake, Paradise, Shine, South Point and Thorndyke.)

**360-437-8200**

Open Tuesday thru Friday 11:30am - 8:00pm  
Saturday 3:30pm - 8:30pm

Fridays — Cowboy Spirit Days and  
All-You-Can-Eat Pizza \$6.99  
from 3:00pm to 8:00pm

Check us out at [www.localsavingsconnection.com](http://www.localsavingsconnection.com)  
email: [deanospizzeria@aol.com](mailto:deanospizzeria@aol.com)



### November Nightly Dinner Specials\*

*Includes choice of Soup or Salad*

Mondays	Spaghetti w/Chicken Parmesan	\$6.95
Tuesdays	Fish and Chips	\$7.95
Wednesdays	Mexican Night	\$8.95
Thursdays	Teriyaki Steak	\$9.95
Fridays	Tempura Seafood Combo	\$11.95
Saturdays	Prime Rib	\$11.95
Sundays	Catch of the Day	\$9.95

\*Served from 5 p.m. 'til closing

• *Now serving Beer & Wine* •

**Hours:** Monday - Thursday 9:00 a.m. - 8:00 p.m.  
Friday & Saturday 9:00 a.m. - 9:00 p.m.  
Sunday 8:00 a.m. - 8:00 p.m.  
Extended Breakfast served until 11:00 a.m.

**To-Go Orders 437-8072**

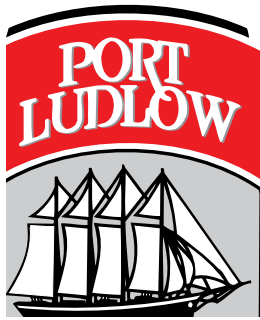
### IN THE BEGINNING... THERE WAS PORT LUDLOW PROPERTY SALES



We're Still the Best Choice  
for All Your Real Estate Needs!

[www.portludlowproperty.com](http://www.portludlowproperty.com)  
**360-437-2500**

email: [plps@olypen.com](mailto:plps@olypen.com)  
9481 Oak Bay Road, Port Ludlow, WA 98365



The mission of the Port Ludlow Voice is to inform its readers of events and activities in the Village, and within close proximity to the Village.

# PORT LUDLOW VOICE

*Serving the Village of Port Ludlow Since 1998*

P.O. Box 65077

Port Ludlow, WA 98365

phone 360-437-9726 • e-mail bwagnerj@olympus.net

Subscription rate: Outside Port Ludlow \$24 per year

Snowbird rate: \$2 per issue

**Managing Editor: Barbara Wagner-Jauregg** 437-9726 bwagnerj@olympus.net

**Assistant and Senior Proofing Editor: Bonnie Schoenemann** 437-2583 bills@waypt.com

**Bay Club Editor: Janet Force** 437-0419 j&d@waypt.com

**Beach Club Editor: Sally Orsborn** 437-0670 orsborn@olympus.net

**Arts and Entertainment Editor: Beverly Rothenborg** 437-0505 masonr@waypt.com

**Eating Around Editor: Bonnie Schoenemann** 437-2583 bills@waypt.com

#### **Contributing Editors:**

**Bev Browne** 437-8099 brownew@bus.orst.edu

**William Hansen** 437-5152 bphansen@cablespeed.com

**Laurie Jensen** 437-0714 lauriejean@olympus.net

**Eline Lybarger** 437-7701 lybarger@olypen.com

**Kate Madson** 437-5156 kmadson@olypen.com

**John Reseck** 437-0351 reseck@cablespeed.com

**Mechanical & Production Manager: Mary Ronen** 437-0268 maryr@cablespeed.com

**Production Assistant: Maureen Poole** 437-2165 shipout@aol.com

**Finance and Subscription Manager: Sally Grything** 437-2065 grything@olympus.net

**Distribution Manager: John Franznick** 437-4121 franz@olypen.com

**Classified Advertising Manager: Barrie Gustin** 437-8025 Sgustins@aol.com

**Display Advertising Manager: Shirley Andersen** 437-7559 andersen@waypt.com

**Advertising Production Manager: Nan Smith** 437-2162 justnan@olypen.com

**Photography: Bob Graham** 437-0680 bgconsulting@waypt.com

Your input is encouraged. Submit your special events and news items to the Beach or the Bay Club Editor or to the Managing Editor no later than the 10th of the month preceding date of issue.

PORT LUDLOW VOICE  
P. O. Box 65077  
PORT LUDLOW, WA 98365

Presorted Standard  
U.S. Postage  
Paid  
Permit NO. 14  
Port Hadlock, WA

ECRWSS  
Good Neighbor  
Port Ludlow, WA  
98365

Deadline is always the 10th of the month for articles.